

Kuephom PM24

Kuephom PM24 Portable CD Player with Speakers User Manual

Model: PM24

INTRODUCTION

This manual provides detailed instructions for the safe and efficient operation of your Kuephom PM24 Portable CD Player with Speakers. Please read this manual thoroughly before using the device and retain it for future reference.

The Kuephom PM24 is a versatile audio device offering multiple playback options including CD, Bluetooth, FM Radio, USB, and TF card. It features built-in stereo speakers, a rechargeable battery for portability, and a remote control for convenient operation.



Image: The Kuephom PM24 Portable CD Player, showcasing its design with an open CD lid, remote control, and an indicator for its rechargeable battery.

PACKAGE CONTENTS

Verify that all items are present in the package:

- Kuephom PM24 Portable CD Player with Speakers x 1
- Charging Cable x 1
- Remote Control x 1
- User Manual x 1

PRODUCT OVERVIEW

The PM24 offers a range of features for diverse audio playback. Familiarize yourself with the device's components and capabilities.

SPEAKER POWER: 2.5+2.5W RMS

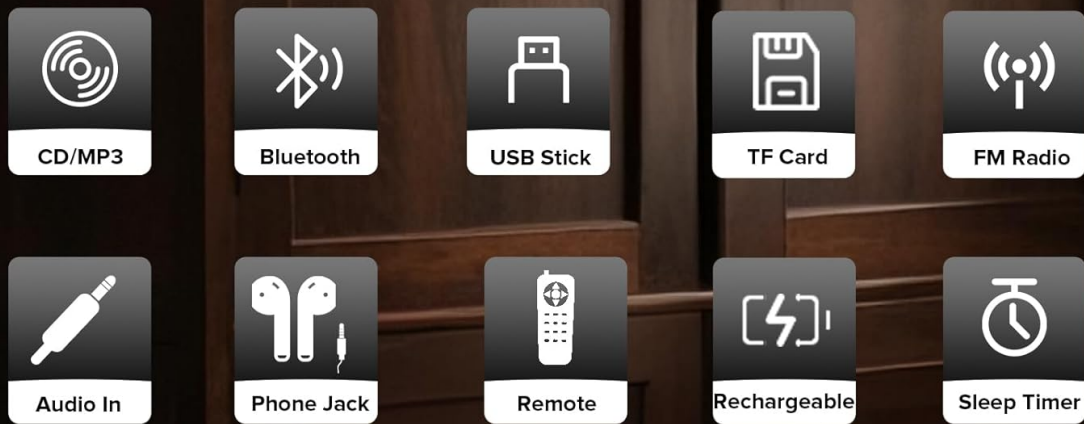


Image: A visual representation of the PM24's key features, including CD/MP3 playback, Bluetooth connectivity, USB and TF card support, FM radio, audio input, headphone jack, remote control, rechargeable battery, and sleep timer.

Key Features:

- **CD/MP3 Playback:** Supports standard audio CDs and MP3 files from CD-R/RW discs.
- **Bluetooth Connectivity:** Wireless audio streaming from compatible devices.
- **USB & TF Card Support:** Play MP3/WMA audio files directly from USB flash drives or TF cards (up to 32GB).
- **FM Radio:** Built-in FM tuner with retractable antenna and programmable presets.
- **Auxiliary Input:** Connect external audio sources via a 3.5mm audio cable.
- **Headphone Jack:** For private listening.
- **Remote Control:** Full function remote for convenient operation.
- **Rechargeable Battery:** Provides portable power for extended use.
- **Sleep Timer:** Automatically turns off the device after a set period.
- **Stereo Speakers:** Integrated speakers for clear audio output.

SETUP

1. Charging the Device

Before first use, fully charge the PM24. Connect the provided charging cable to the DC 5V input port on the device and the other end to a standard USB power adapter (not included) or a computer USB port.

- The charging indicator light will illuminate during charging.
- A full charge typically takes approximately 4 hours.
- The device provides approximately 5-8 hours of playback on a full charge, depending on volume and mode.



Image: Visual representation of the PM24's rechargeable nature, highlighting its play time and charge time.

2. Power On/Off

Press and hold the **POWER** button on the device or remote control to turn the unit on or off.

3. Remote Control Battery Installation

The remote control requires 2 AAA batteries (not included). Open the battery compartment on the back of the remote and insert the batteries, observing the correct polarity (+/-).

OPERATING INSTRUCTIONS

1. Using the Remote Control

The remote control allows for convenient operation of all functions from a distance.

Use Remote to Command audio play



Image: A user interacting with the PM24 using the remote control, illustrating various functions accessible from the remote.

- **Power Button:** Turns the device on or off.
- **Mode Button:** Switches between CD, Bluetooth, FM, USB, TF, and AUX modes.
- **Play/Pause Button:** Starts or pauses playback.
- **Previous/Next Track Buttons:** Skips to the previous or next track/station.
- **Volume +/- Buttons:** Adjusts the volume level.
- **Repeat/Shuffle Button:** Changes playback repeat modes (e.g., repeat one, repeat all, shuffle).
- **Sleep Button:** Activates and sets the sleep timer.

2. CD Playback

1. Open the CD compartment lid.
2. Carefully place a CD (audio CD or MP3 CD) onto the spindle with the label side facing up.
3. Close the CD compartment lid.
4. Press the **MODE** button until "CD" mode is selected.
5. The CD will begin playing automatically. If not, press the **PLAY/PAUSE** button.



Image: Icons illustrating various CD playback options such as sequential play, random play, repeating a single track, repeating all tracks, and the play memory function.

3. Bluetooth Mode

1. Press the **MODE** button until "BT" (Bluetooth) mode is selected. The display will show "bt" and flash, indicating it's in pairing mode.
2. On your Bluetooth-enabled device (smartphone, tablet, etc.), enable Bluetooth and search for available devices.
3. Select "PM24" from the list of devices.
4. Once paired, the "bt" indicator will stop flashing, and you can stream audio wirelessly to the PM24.

5.1 VERSION BLUETOOTH

Connects fast and stably



Image: A smartphone screen showing a successful Bluetooth connection to the PM24, with the player's display confirming 'bt' mode.

4. FM Radio Mode

1. Extend the telescopic antenna on the back of the unit for optimal reception.
2. Press the **MODE** button until "FM" mode is selected.
3. Press and hold the **PLAY/PAUSE** button to initiate an automatic station scan. The radio will scan and save available stations.
4. Use the **PREVIOUS/NEXT TRACK** buttons to navigate through saved stations.



Image: A user enjoying FM radio on the PM24, with visual cues indicating different radio frequencies.

5. USB/TF Card Playback

1. Insert a USB flash drive into the USB port or a TF card into the TF card slot. Ensure the card is inserted correctly.
2. Press the **MODE** button until "USB" or "TF" mode is selected.
3. The device will automatically detect and begin playing MP3/WMA audio files from the inserted storage.
4. Use the **PREVIOUS/NEXT TRACK** buttons to navigate between files.

Rechargeable & Portable



Play Time 6~8H



Charge Time 4H



Image: Close-up view of the USB and TF card slots on the PM24, indicating their function for playing media from external storage.

6. Auxiliary Input (AUX)

1. Connect one end of a 3.5mm audio cable (not included) to the AUX IN port on the PM24.
2. Connect the other end to the headphone jack or audio output of an external audio device (e.g., smartphone, MP3 player).
3. Press the **MODE** button until "AUX" mode is selected.
4. Control playback and volume from your external audio device.

7. Sleep Timer Function

The sleep timer allows the device to automatically turn off after a set period.

1. While the device is playing, press the **SLEEP** button on the remote control.
2. Repeatedly press the **SLEEP** button to cycle through available timer settings (e.g., 10, 20, 30, 60, 90 minutes).
3. The selected time will be displayed. The device will automatically power off once the timer expires.



Drift off peacefully to your favorite tunes with **sleep timer** function



Image: A visual demonstration of the sleep timer function, showing the PM24 on a nightstand while a person sleeps.

8. Using Headphones

For private listening, connect 3.5mm headphones (not included) to the **EARPHONE JACK** on the device. The built-in speakers will automatically mute when headphones are connected.



Image: A user enjoying private audio through headphones connected to the PM24.

MAINTENANCE

- **Cleaning:** Use a soft, dry cloth to clean the exterior of the device. Do not use abrasive cleaners or solvents.
- **CD Care:** Handle CDs by their edges. Clean dirty CDs with a soft, lint-free cloth, wiping from the center outwards.
- **Storage:** When not in use for extended periods, store the device in a cool, dry place away from direct sunlight and extreme temperatures.
- **Battery:** To prolong battery life, avoid fully discharging the battery frequently. Charge the device regularly, even if not in use.

TROUBLESHOOTING

Problem	Possible Cause	Solution
---------	----------------	----------

Problem	Possible Cause	Solution
Device does not power on.	Battery is depleted.	Connect the charging cable and allow the device to charge.
No sound from speakers.	Volume is too low or muted. Headphones are connected.	Increase volume. Disconnect headphones.
CD skips or does not play.	CD is dirty, scratched, or inserted incorrectly.	Clean the CD. Ensure it is placed correctly. Try another CD.
Bluetooth pairing fails.	Device is too far, not in pairing mode, or already paired.	Ensure PM24 is in BT mode and flashing. Move devices closer. Disconnect from other devices.
Poor FM radio reception.	Antenna not extended or poor signal area.	Fully extend the telescopic antenna. Reposition the device for better signal.
Remote control not working.	Batteries are depleted or inserted incorrectly. Obstruction between remote and device.	Replace batteries, check polarity. Remove obstructions. Ensure remote is pointed at the device.

SPECIFICATIONS

- **Model:** PM24
- **Brand:** Kuephom
- **Product Dimensions:** 7.5 x 6.3 x 2.5 inches (19.05 x 16.00 x 6.35 cm)
- **Item Weight:** 1.96 pounds (0.89 kg)
- **Connectivity Technology:** Auxiliary, Bluetooth, USB
- **Color:** Black
- **Speaker Type:** Stereo
- **Batteries:** 1 Nonstandard Battery (included)
- **Play Time:** 5-8 hours (approx.)
- **Charge Time:** 4 hours (approx.)

WARRANTY AND SUPPORT

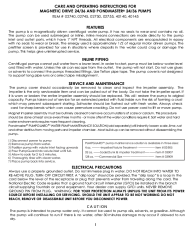
Kuephom products are designed for reliability and performance. For warranty information or technical support, please refer to the contact details provided on the product packaging or visit the official Kuephom website.

Please retain your proof of purchase for warranty claims.



[Panasonic SC-PM5/SC-PM24 CD Stereo System Operating Instructions](#)

Comprehensive operating instructions for the Panasonic SC-PM5 and SC-PM24 CD Stereo Systems. This guide covers setup, safety precautions, operation of various functions including CD, FM/AM radio, USB, timer settings, sound effects, troubleshooting, and specifications.



[Pondmaster Magnetic Drive 24/36 Pump: Care, Operating, and Maintenance Instructions](#)

Comprehensive care, operating, and maintenance instructions for Pondmaster Magnetic Drive 24/36 and 24/36 pumps, including models 02740, 02745, 02750, 02755, 40140, and 40145. This guide covers features, inline piping, service procedures, electrical precautions, parts lists, specifications, and warranty information for these centrifugal water pumps.



[Atlantic UCool Series Commercial Refrigerators](#)

Explore the Atlantic UCool Series of commercial refrigerators, featuring European design, eco-friendly R290 refrigerant, double-paned tempered glass, and advanced cooling systems. Available in various models for diverse business needs.



[Bosch Solution 6000 Alarm & Access Product Guide: Components and Features](#)

Explore the comprehensive range of Bosch Solution 6000 alarm and access control system components, including keypads, communication modules, detectors, and expanders. Find product details and part numbers for security installations.



[White River V15: Architectural Mouldings Catalog](#)

Explore the White River V15 catalog featuring a comprehensive collection of high-relief architectural mouldings, including cornice, frieze, casing, and panel mouldings. Discover options for contemporary, traditional, and classical interior design, suitable for kitchens and bathrooms. All mouldings are manufactured from clear Poplar in USA and can be stained, painted, or glazed.