

## BEVA 5

# BEVA 1080P HD Endoscopic Inspection Camera with Light

Model: 5 (F280)  
User Manual

## 1. INTRODUCTION

---

Thank you for choosing the BEVA 1080P HD Endoscopic Inspection Camera. This device is designed for detailed visual inspection in hard-to-reach areas, offering high-definition imaging and versatile compatibility. This manual provides essential information for the safe and effective use of your endoscope, including setup, operation, maintenance, and troubleshooting.

## 2. PRODUCT OVERVIEW

---

### Key Features:

- **1080P HD Resolution:** Provides clear images and videos for detailed inspections.
- **8mm Probe Diameter:** Compact and portable for accessing narrow spaces.
- **8 Adjustable LED Lights:** Ensures clear visibility even in dark environments.
- **IP68 Waterproof Rating:** Suitable for use in wet and damp conditions.
- **2600mAh Battery:** Offers 4-5 hours of long standby time.
- **Wide Compatibility:** Connects to iOS and Android smartphones via included adapters.
- **Included Accessories:** Small hook, magnet, and side-view mirror for enhanced functionality.

### Components and Accessories:

The BEVA Endoscopic Camera comes with several components and accessories to assist with various inspection tasks.

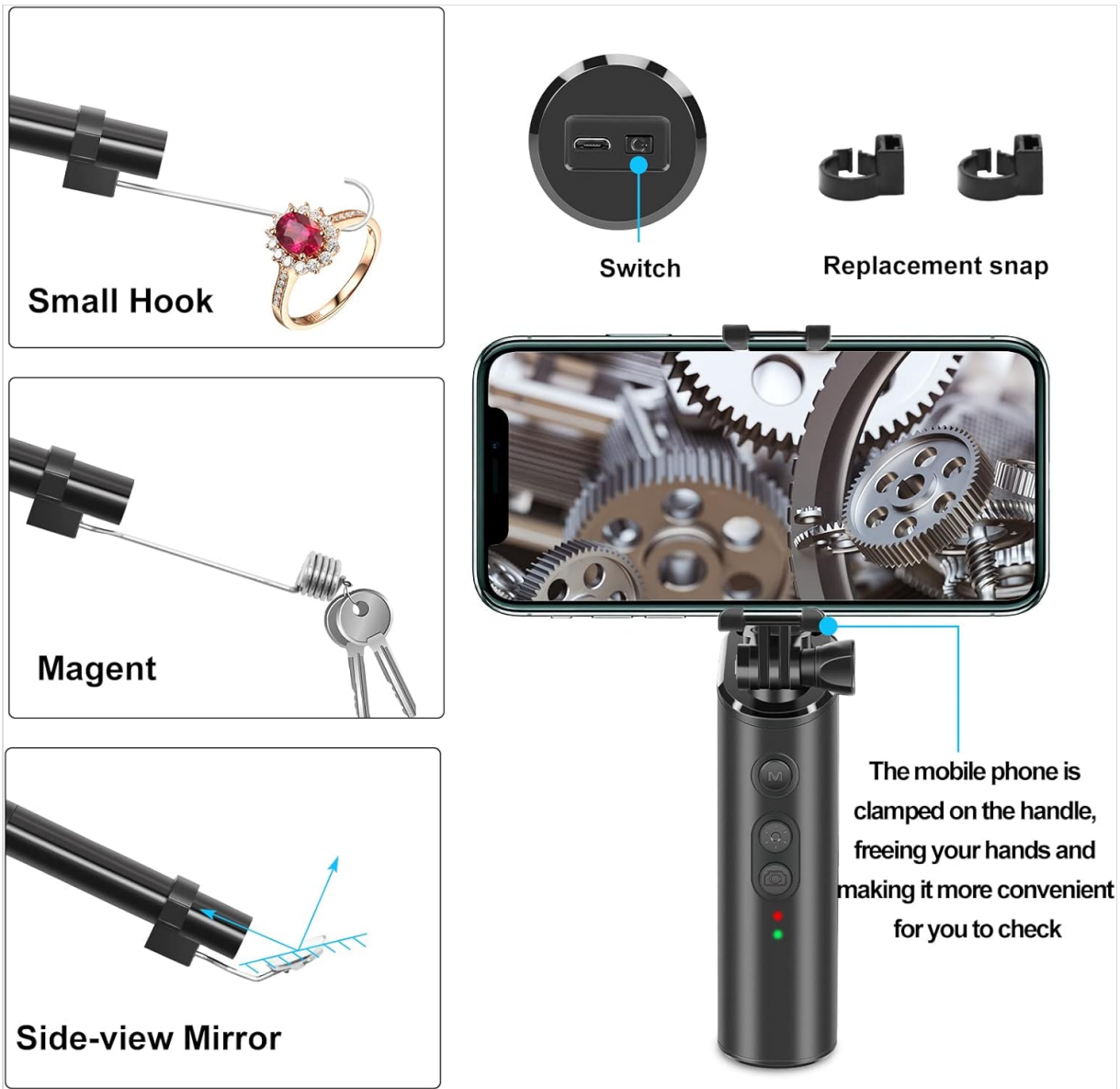
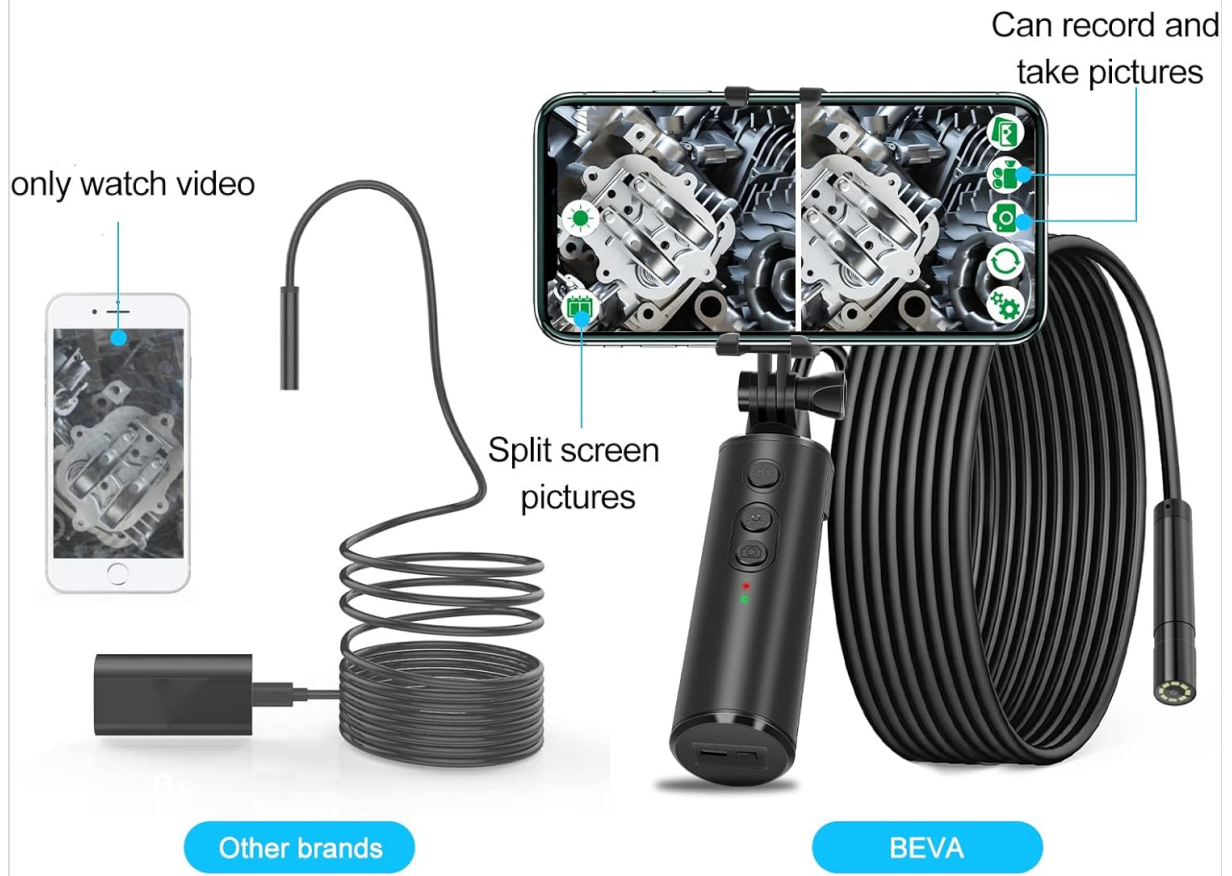


Figure 2.1: Main unit with phone holder and various accessories like a small hook, magnet, and side-view mirror for retrieving objects or viewing at different angles.

# Split Screen

Split-screen images and albums for easy comparison with previous images



**Figure 2.2:** The BEVA endoscope supports a split-screen feature, allowing easy comparison of current and previous images or simultaneous viewing of different angles.

# 1080P HD camera

8.00mm diameter HD camera, 2 megapixels, suitable for different scenes. With adjustable LED light for easy use in dark environments.



**Figure 2.3:** The 1080P HD camera features an 8.00mm diameter probe with 2 megapixels and adjustable LED lighting for clear imaging in various environments.



**Figure 2.4:** The device is IP68 waterproof, making it suitable for wet conditions, and is powered by a 2600mAh battery providing extended usage.



**Figure 2.5:** The BEVA endoscope features a flexible yet soft cable, allowing for easier navigation through complex spaces compared to stiffer alternatives.



Figure 2.6: The endoscope is compatible with both iOS and Android systems and can be used for a wide range of applications, from industrial inspections to household maintenance.

### 3. SETUP

#### 3.1 Charging the Device:

1. Connect the endoscope to a standard USB power adapter (not included) using the provided charging cable.
2. The charging indicator light will illuminate. A full charge typically takes a few hours.
3. Once fully charged, the indicator light may change color or turn off, depending on the model.

#### 3.2 Connecting to Your Smartphone:

1. **Download the App:** Search for the recommended endoscope application in your smartphone's app store (e.g., App Store for iOS, Google Play Store for Android). Refer to the packaging or a small QR code on the device for the specific app name.
2. **Power On:** Press and hold the power button on the endoscope handle to turn it on. The indicator light will show it's active.
3. **Connect Adapter:** Plug the appropriate adapter (iPhone or Micro USB) into your smartphone's charging port.
4. **Connect Endoscope:** Connect the endoscope's USB cable to the adapter.

5. **Open App:** Launch the downloaded endoscope application. The camera feed should appear on your screen. If not, check your phone's settings for camera permissions or try restarting the app and device.

## 4. OPERATING INSTRUCTIONS

---

### 4.1 Basic Operation:

- **Power On/Off:** Press and hold the power button on the handle.
- **Adjust LED Brightness:** Use the dedicated button on the handle to cycle through different brightness levels for the 8 LED lights.
- **Taking Photos:** Press the camera button on the handle or within the app to capture still images.
- **Recording Videos:** Press the video button on the handle or within the app to start/stop video recording.

### 4.2 Using Accessories:

- **Small Hook:** Attach the hook to the endoscope probe to retrieve small objects from tight spaces.
- **Magnet:** Use the magnet accessory to pick up metallic items.
- **Side-view Mirror:** Attach the mirror to the probe for inspecting areas at a 90-degree angle.

### 4.3 Advanced Features:

- **Split Screen:** If supported by the app, utilize the split-screen function to compare live footage with previously captured images or view multiple angles simultaneously.
- **Image Rotation:** The app may offer options to rotate the image for optimal viewing orientation.

## 5. MAINTENANCE

---

### 5.1 Cleaning:

- After each use, especially in dirty or wet environments, gently wipe the camera lens and probe with a soft, dry cloth.
- For stubborn dirt, use a slightly damp cloth and then dry thoroughly. Do not use harsh chemicals or abrasive cleaners.
- Ensure the USB port is clean and dry before charging or connecting to a device.

### 5.2 Storage:

- Store the endoscope in a cool, dry place, away from direct sunlight and extreme temperatures.
- Keep the protective cap on the camera lens when not in use to prevent scratches.
- If storing for an extended period, ensure the battery is partially charged (around 50%) to prolong its lifespan.

## 6. TROUBLESHOOTING

---

If you encounter issues with your BEVA Endoscopic Camera, please refer to the following common problems and solutions:

| Problem                  | Possible Cause  | Solution   |
|--------------------------|---|--|
| No image on phone screen | Device not powered on; Loose connection; App not open or permissions denied; Low battery. | Ensure device is powered on; Reconnect cable firmly; Open app and grant camera permissions; Charge the device. |

| Problem                | Possible Cause   | Solution   |
|------------------------|--|--|
| Poor image quality     | Insufficient lighting; Dirty lens; Incorrect focal distance. | Adjust LED brightness; Clean the camera lens; Adjust distance to object (optimal focal length is 8mm). |
| Device not charging    | Faulty cable or adapter; Dirty USB port.                     | Try a different USB cable and power adapter; Clean the USB port on the device.                         |
| App crashes or freezes | App software issue; Phone system overload.                   | Restart the app and your phone; Check for app updates; Ensure your phone has sufficient memory.        |

## 7. SPECIFICATIONS

| Feature              | Specification                                    |
|----------------------|--|
| Brand                | BEVA   |
| Model Number         | 5 (F280)   |
| Video Resolution     | 1080p  |
| Probe Diameter       | 8 mm   |
| Focal Length         | 8 mm   |
| Battery Capacity     | 2600 mAh Lithium-ion                             |
| Cable Length         | 5 meters   |
| Waterproof Rating    | IP68   |
| LED Lights           | 8 adjustable LEDs                                |
| Compatibility        | iOS, Android (via iPhone/Micro USB adapter)      |
| Included Components  | Protective caps, magnets, hook, side-view mirror |
| Dimensions (Package) | 18.2 x 17.5 x 4.8 cm                             |
| Weight (Package)     | 390 grams  |

## 8. WARRANTY AND SUPPORT

BEVA offers comprehensive customer service and a strong warranty to ensure confidence in product quality. For specific warranty details, including coverage period and terms, please refer to the documentation provided with your purchase or contact your retailer.

### Customer Support:

If you require further assistance, have questions not covered in this manual, or need to report a product issue, please contact BEVA customer support through the following channels:

- Refer to the contact information provided on the product packaging or the official BEVA website.
- Contact the seller directly through the platform where the product was purchased.

Please have your product model number (Model 5 / F280) and purchase details ready when contacting support.