

Manuals+

[Q & A](#) | [Deep Search](#) | [Upload](#)

[manuals.plus](#) /

› [GDKLXL](#) /

› [GDKLXL Rechargeable Electric Razor for Men User Manual](#)

GDKLXL MS-368

GDKLXL Rechargeable Electric Razor for Men User Manual

Model: MS-368

INTRODUCTION

Thank you for choosing the GDKLXL Rechargeable Electric Razor for Men. This manual provides essential information for the safe and effective use, maintenance, and care of your new electric shaver. Designed for precision and comfort, this IPX7 waterproof shaver features 4D flex precision blades and a convenient pop-up trimmer, ensuring a smooth shave for sensitive skin. Please read this manual thoroughly before first use and keep it for future reference.



Image: The GDKLXL Rechargeable Electric Razor, showcasing its sleek design and accompanying retail packaging.

SAFETY INFORMATION

Your safety is paramount. Please adhere to the following safety guidelines:

- Always hold the shaver away from your face while turning it on/off to prevent injury.
- Do not submerge the shaver in water; rinse it under the faucet instead.
- Charge the shaver on a flat, dry surface and avoid overcharging to prevent battery damage.
- Always unplug the charger when not in use.
- Keep the shaver clean and dry to prevent bacterial growth.
- Do not use the shaver while charging.

COMPONENTS AND PACKAGE CONTENTS

The GDKLXL Electric Razor package includes the following items:

- GDKLXL Electric Razor (Model MS-368)
- Cleaning Brush
- USB-C Charging Cable
- Visual Guide / User Manual

SETUP AND CHARGING

Before first use, fully charge your electric razor. The device is equipped with an 800mAh Li-ion battery for extended use.

1. **Initial Charge:** Connect the provided USB-C charging cable to the charging port on the shaver and plug the other end into a compatible USB power adapter (not included).
2. **Charging Indicator:** The LED display on the shaver will show the battery percentage and charging status. A full charge typically takes approximately 1.5 hours.
3. **Battery Life:** A full charge provides up to 90 minutes of shaving time. The LED display will indicate the remaining power.

Rechargeable power



120 minutes



120 minutes
cordless shaving



800 mAh
lithium battery



Image: The electric razor being charged via USB-C, highlighting its 120-minute cordless shaving capability and 800mAh Li-ion battery.

OPERATING INSTRUCTIONS

Shaving Your Face

The GDKLXL electric razor offers versatile wet and dry shaving options.

- **Dry Shave:** For a quick and convenient shave, use the shaver on dry skin.
- **Wet Shave:** For a more comfortable and smoother shave, you can use the shaver with shaving foam, gel, or even in the shower. The IPX7 waterproof rating ensures safe use in wet conditions.

1. **Power On:** Press the power button to turn on the shaver.
2. **Shaving Technique:** Gently move the shaver in small circular motions over your face and neck. The 4D flex precision blades are designed to adapt to the contours of your face, jawline, and neck for an efficient and close shave.
3. **Pressure:** Apply light to moderate pressure. Avoid pressing too hard, as this can cause irritation.
4. **Sensitive Skin:** The hypoallergenic stainless steel blades are designed to visibly reduce irritation on sensitive skin.



Shave Wet or Dry

With Foam, Gel
or Even in
The Shower



Image: Demonstrates the versatility of the GDKLXL electric razor for both wet shaving with foam and dry shaving.



PowerCut Blades

Adapts to every
contours

Image: A detailed view of the PowerCut Blades, engineered to adapt to facial contours for an effective shave.

Using the Pop-Up Trimmer

The integrated pop-up trimmer is ideal for detailing and shaping.

1. **Activate Trimmer:** Locate the pop-up trimmer switch on the back of the shaver and slide it upwards to engage the trimmer.
2. **Trimming:** Use the trimmer to define sideburns, trim mustaches, or shape beard lines.
3. **Deactivate Trimmer:** Slide the switch back down to retract the trimmer when finished.

Refine your
sideburns and
mustache



Sideburns
trimmer

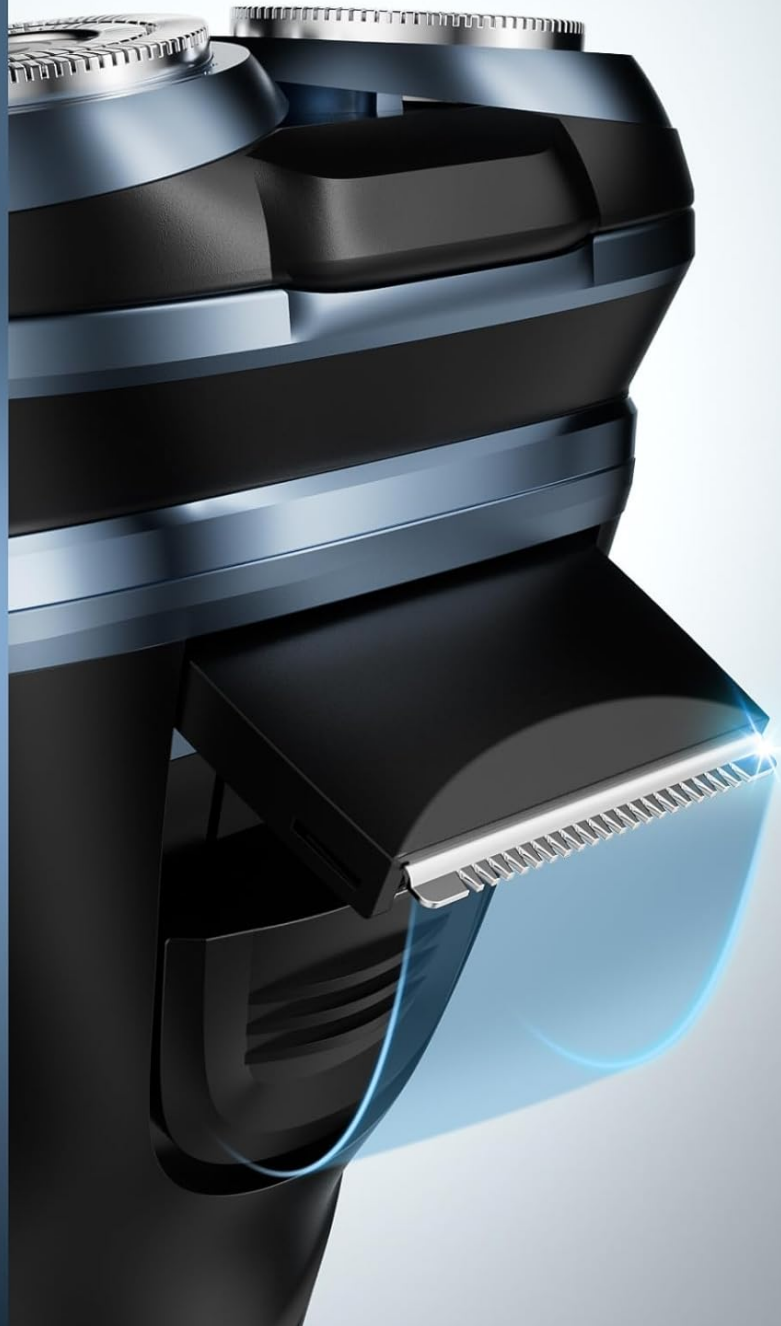


Image: A close-up demonstrating the pop-up sideburns trimmer, perfect for refining edges and detailing.

Travel Lock Function

To prevent accidental activation during travel, the shaver features a travel lock.

- **Activate Lock:** Press and hold the power button for 3 seconds until a lock icon appears on the LED display.
- **Deactivate Lock:** Press and hold the power button for 3 seconds again until the lock icon disappears.

MAINTENANCE AND CLEANING

Regular cleaning ensures optimal performance and hygiene.

1. **Daily Cleaning:** After each use, turn off the shaver. Press the release button to detach the shaver head. Rinse the shaver head and the main body under running tap water.
2. **Deep Cleaning:** Periodically, use the provided cleaning brush to remove any stubborn hair clippings from the blades and internal components.

3. **Drying:** Shake off excess water and allow the shaver head and body to air dry completely before reattaching the head or storing the device.
4. **Blade Replacement:** For best shaving performance, it is recommended to replace the shaver heads every 12 months, depending on usage. Replacement heads can be purchased from authorized GDKLXL retailers.



Image: The electric razor being cleaned under running water, highlighting its IPX7 waterproof design and detachable head for easy maintenance.

TROUBLESHOOTING

If you encounter any issues with your GDKLXL electric razor, please refer to the following common problems and solutions:

Problem	Possible Cause	Solution
---------	----------------	----------

Problem	Possible Cause	Solution
Shaver does not turn on.	Battery is depleted; Travel lock is activated.	Charge the shaver fully; Deactivate the travel lock by holding the power button for 3 seconds.
Poor shaving performance / pulling hairs.	Blades are dull or clogged with hair; Insufficient battery charge.	Clean the shaver head thoroughly; Ensure the shaver is fully charged; Consider replacing the shaver heads.
Shaver makes unusual noise.	Hair clippings caught in the mechanism; Shaver head not properly attached.	Clean the shaver thoroughly; Reattach the shaver head securely.
LED display not working.	Battery is completely dead; Device malfunction.	Charge the shaver for at least 30 minutes; If issue persists, contact customer support.

SPECIFICATIONS

Feature	Detail
Model Name	MS-368
Product Dimensions	2.9 x 7.2 x 3.4 inches
Item Weight	9.59 ounces
Power Source	Battery Powered
Battery Type	800mAh Li-ion (Rechargeable)
Charging Time	Approx. 1.5 hours (for full charge)
Shaving Time	Up to 90 minutes on full charge
Waterproof Rating	IPX7
Special Features	4D Flex Precision Blades, Pop-Up Trimmer, Rechargeable, Fast Charge
Manufacturer	GDKLXL
UPC	737633042441
GTIN	737633042441

WARRANTY AND SUPPORT

The GDKLXL Electric Razor (Model MS-368) comes with a **24-month warranty** from the date of purchase, covering manufacturing defects. This warranty does not cover damage caused by misuse, accidents, unauthorized repairs, or normal wear and tear.

For warranty claims, technical support, or any inquiries, please contact GDKLXL customer service through the retailer where the product was purchased or visit the official GDKLXL brand store online:

GDKLXL Brand Store: [Visit GDKLXL Store on Amazon](#)

Please retain your proof of purchase for warranty validation.

