

iZEEKER iG420

iZEEKER iG420 4K UHD 64MP Solar Trail Camera User Manual

Model: iG420 | Brand: iZEEKER

INTRODUCTION

Welcome to the iZEEKER iG420 4K UHD 64MP Solar Trail Camera user manual. This guide provides detailed instructions for setting up, operating, maintaining, and troubleshooting your trail camera. Please read this manual thoroughly before use to ensure optimal performance and longevity of your device.

PACKAGE CONTENTS

Verify that all items are present in your package:

- 1 x iG420 Trail Camera
- 1 x Mounting Strap
- 1 x User Manual
- 1 x USB Cable
- 1 x 64GB Micro SD Card



Image: Contents of the iZEEKER iG420 Trail Camera package.

SETUP GUIDE

1. **Remove Protective Films:** Carefully remove all protective films from the camera body and lens.
2. **Initial Charging:** Connect the camera to a power source using the included USB cable. Charge the internal 5200mAh lithium battery for at least 8 hours before first use. The charging indicator light will illuminate. A red light indicates charging, and a blinking green light indicates charging is complete.
3. **Install Backup Batteries (Optional):** For extended outdoor use, insert 4 AA batteries (not included) into the designated compartment. Ensure correct polarity.
4. **Insert Micro SD Card:** Insert the provided 64GB Micro SD card into the card slot. Ensure it clicks into place. *Note: Micro SD cards with adapters are not supported.*

5. **Power On:** Slide the power switch to the "ON" position.
6. **Language and Time Settings:** Select your preferred language and set the current time and date using the navigation buttons.
7. **Format SD Card:** It is crucial to format the SD card before first use to ensure compatibility and optimal performance. Navigate to the "Settings" menu and select "Format Memory Card." Confirm the action.
8. **Configure Settings:** Access the "Settings" menu to adjust photo/video resolution, PIR sensitivity, work time, and other preferences.
9. **Exit Menu:** Press the "MENU" button again to exit the settings and return to the live preview.
10. **Automatic Capture Mode:** If no operation is performed, the camera will automatically enter capture mode after a 30-second countdown. The monitor delay can be set to 30 seconds, 1 minute, or 3 minutes.

OPERATING THE CAMERA

App Connection (TrailCam Go)

1. **Download App:** Download the "TrailCam Go" app from your smartphone's app store.
2. **Power On Camera:** Ensure the camera is in the "ON" position.
3. **Enable Phone's Wi-Fi and Bluetooth:** Activate Wi-Fi and Bluetooth on your smartphone. *Note: Do not connect to home Wi-Fi or other Bluetooth devices.*
4. **Add Device:** Open the "TrailCam Go" app, tap the "+" icon, and select "Wi-Fi Camera." Follow the on-screen prompts, tapping "Next" and then "Connect."
5. **Connect to Camera's Wi-Fi:** When prompted, connect to the camera's Wi-Fi network (e.g., "TrailCam_XXXX").
6. **Name Device:** Set a name for your camera (e.g., "Front Yard," "Back Yard").
7. **Connection Success:** Once connected, you can view the camera's status and live feed.

Regola la posizione della telecamera
Visualizza le immagini sull'app
Regola le impostazioni sull'app

(La portata effettiva del Wi-Fi della telecamera è di 10 metri.)

Wi-Fi 6 *Connessione e trasmissione più veloci*



Image: Connecting the iZEEKER iG420 Trail Camera to the mobile app via Wi-Fi 6.

App Functions

- **Live Preview:** Tap "Camera" to view the live feed from the camera.
- **Gallery:** Tap "Gallery" to view or download captured images and videos.
- **Status:** Tap "Status" to check battery usage and SD card memory.
- **Settings:** Tap "Settings" to adjust camera parameters such as working mode, photo/video settings, motion detection sensitivity, and device language.



Image: Detailed steps for connecting the camera to the "TrailCam Go" mobile application.

INSTALLATION AND PLACEMENT

Select an optimal installation position for your trail camera:

- **Mounting:** Use the provided strap to securely attach the camera to a tree or pole. The camera also supports wall mounting and tripod mounting.
- **Solar Panel Angle:** Adjust the angle of the integrated solar panel to prevent accumulation of rainwater, fallen leaves, and dust, ensuring continuous solar charging.
- **Optimal Height:** Mount the camera at a height that provides a clear view of the target area, typically 1-2 meters from the ground.
- **Avoid Direct Sunlight/Obstructions:** Position the camera to avoid direct sunlight into the lens, which can cause overexposure. Ensure no branches or tall grass obstruct the PIR sensors or lens.

Costruito per l'esterno



IP66 *Impermeable
& Duradero*

Image: The iZEEKER iG420 Trail Camera mounted on a tree, highlighting its robust and waterproof design suitable for outdoor use.

MAINTENANCE

- **Cleaning:** Regularly clean the camera lens and PIR sensors with a soft, dry cloth to ensure clear images and proper motion detection.
- **Battery Check:** Periodically check the battery level via the app or on the camera's screen. Replace AA backup batteries as needed.
- **SD Card Management:** Format the SD card regularly to prevent data corruption and ensure sufficient storage space. Back up important files before formatting.
- **Firmware Updates:** Check the iZEEKER website or app for any available firmware updates to improve

camera performance and features.

- **Storage:** When not in use for extended periods, store the camera in a cool, dry place with batteries removed.

TROUBLESHOOTING

Common Issues and Solutions

- **Camera not powering on:**
 - Ensure the internal battery is charged.
 - Check if backup AA batteries are inserted correctly and have sufficient power.
 - Verify the power switch is in the "ON" position.
- **Poor image/video quality:**
 - Clean the camera lens.
 - Ensure the camera is not facing direct sunlight or strong light sources.
 - Adjust photo/video resolution settings in the menu or app.
 - Check for obstructions in front of the lens or PIR sensors.
- **Motion detection not working:**
 - Adjust PIR sensitivity settings (High, Medium, Low).
 - Ensure no objects (branches, tall grass) are constantly moving in front of the PIR sensors.
 - Verify the camera is in the correct operating mode (e.g., Motion Detection).
- **Wi-Fi connection issues:**
 - Ensure the camera is in "ON" mode.
 - Verify Wi-Fi and Bluetooth are enabled on your smartphone.
 - Make sure you are within the camera's Wi-Fi range (limited to 33 feet).
 - Restart both the camera and your smartphone.
- **SD card error:**
 - Ensure the SD card is inserted correctly.
 - Format the SD card (back up data first).
 - Try a different Class 10 or higher micro SD card.

SPECIFICATIONS

Feature	Detail
Model Name	iG420
Video Capture Resolution	4K UHD (25fps), 2.7K/1080P/720P (30fps)
Photo Resolution	Up to 64MP
Power Source	Solar Powered, Battery (5200mAh rechargeable lithium battery included, 4 AA backup batteries not included)
Connectivity	Wi-Fi 6, Bluetooth

Feature	Detail
Water Resistance Level	IP66 Waterproof
Night Vision Range	65 Feet (850nm LED)
Trigger Speed	0.1 seconds
Included Components	1 x iG420 Trail Camera, 1 x Mounting Strap, 1 x User Manual, 1 x 64GB Micro SD Card
Dimensions (LxWxH)	14 x 10.7 x 9.5 cm
Weight	680 g

WARRANTY AND SUPPORT

iZEEKER offers a 2-year warranty for this product. For technical support, warranty claims, or any inquiries, please contact iZEEKER customer service.

- **Customer Service:** Refer to the contact information provided in your product packaging or visit the official iZEEKER website.
- **Online Resources:** Check the iZEEKER brand store on Amazon for FAQs and additional support.

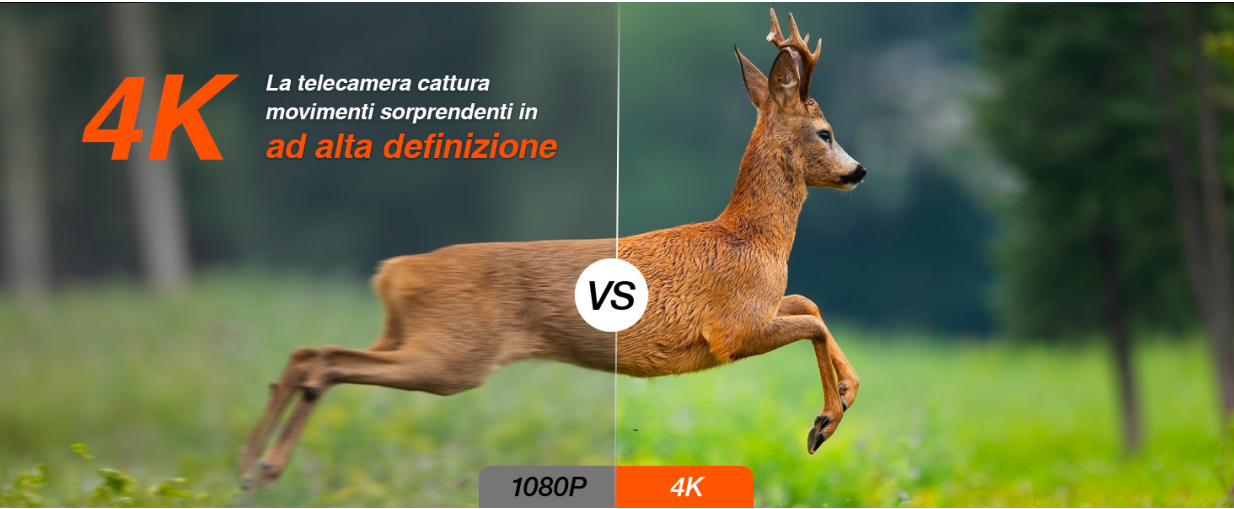


Image: iZEEKER customer support details, including quick response times, return policy, and ongoing service.