



[Manuals.plus](#) /

› [Fromann](#) /

› Fromann Adjustable Bed Frame Twin XL-Dual Motor Instruction Manual

Fromann 9.01.1041390-TXL

Fromann Adjustable Bed Frame Twin XL-Dual Motor Instruction Manual

Model: 9.01.1041390-TXL

1. INTRODUCTION

This manual provides detailed instructions for the assembly, operation, maintenance, and troubleshooting of your Fromann Adjustable Bed Frame Twin XL-Dual Motor. Please read this manual thoroughly before installation and use to ensure proper function and safety.

2. SAFETY INFORMATION

- **Weight Capacity:** The bed frame is designed to support a maximum weight of 750 lbs (including mattress and occupants). Do not exceed this limit.
- **Child Lock Feature:** The wireless remote includes a child lock function to prevent unintended adjustments. Activate this feature when children are present to ensure safety.
- **Moving the Frame:** The bed frame is heavy (approximately 112.2 pounds). It is recommended that two or more individuals move the frame to prevent injury.
- **Headboard Compatibility:** This adjustable bed frame is not designed for attachment to traditional headboards.
- **Power Disconnection:** Always unplug the bed frame from the power outlet before performing any maintenance or cleaning.

3. PACKAGE CONTENTS

Verify that all components are present before beginning assembly:

- Adjustable Bed Frame (folded)
- Adjustable Legs (6 or 13-inch options)

- Wireless Remote Control (with AAA batteries included)
- Control Box (with 2 x 12V batteries included)
- Power Cord
- Foot Retainer Bar
- Safety Pins

4. SETUP AND INSTALLATION

The bed frame is designed for quick assembly, typically within minutes. No additional tools are required.

1. **Unpack and Position:** Carefully remove the bed frame from its packaging. The frame is heavy; use assistance if needed. Unfold the frame in the desired location. The end with the USB ports and remote pocket is the head end.
2. **Secure Safety Pins:** Locate and secure the two safety pins to lock the frame in its open position.
3. **Attach Legs:** Screw the six adjustable legs into the designated threaded receivers on the underside of the frame. Choose between the 6-inch or 13-inch leg options to customize your bed height and allow for under-bed storage.

Quick 3 Minutes Installation

Adjustable bed frames are flat packed for easy handling in aisles and stairs

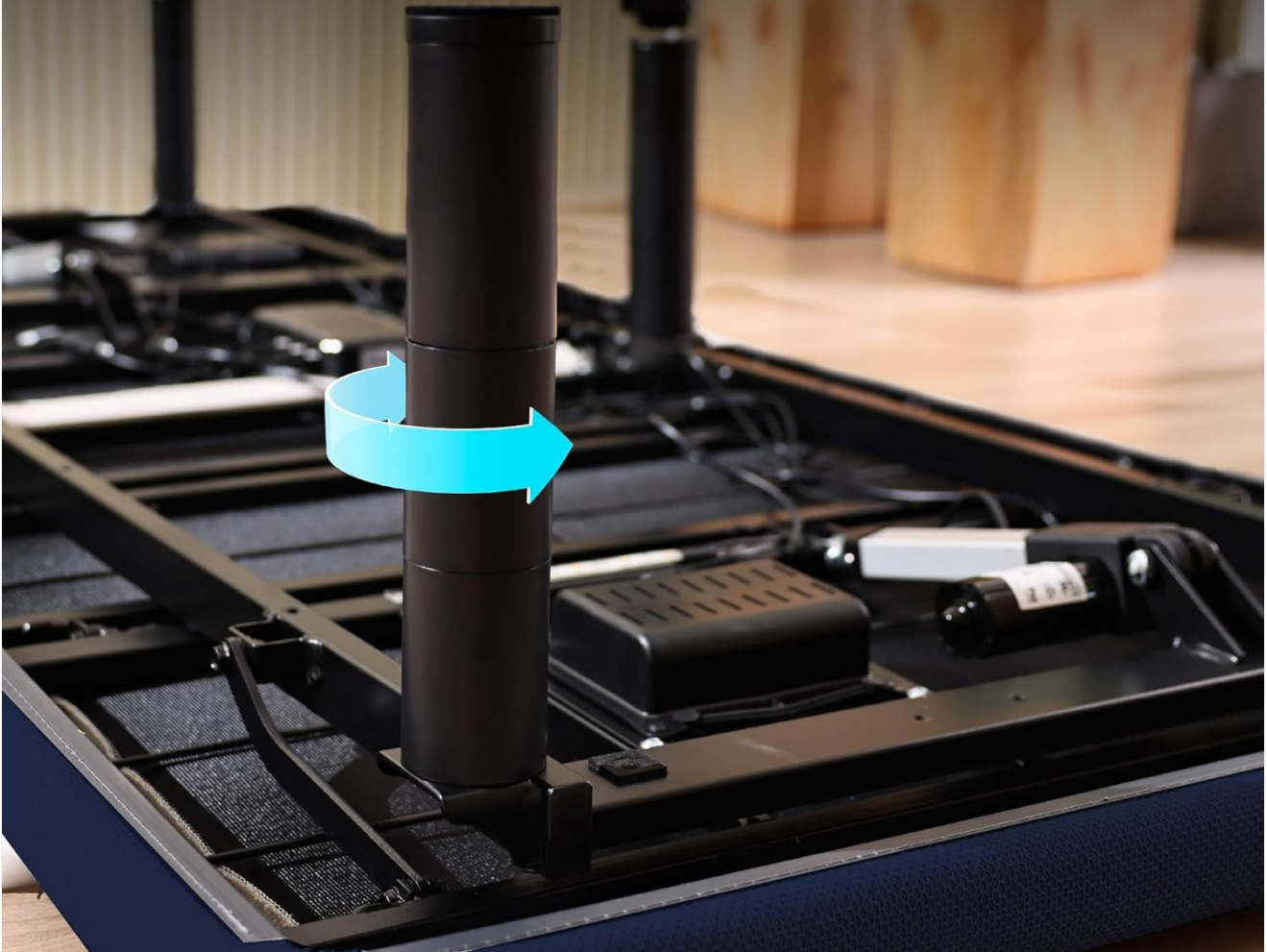


Image: Quick installation of an adjustable leg.

4. **Flip the Frame:** With assistance, carefully flip the bed frame over so it rests on its newly installed legs.
5. **Install Control Box Batteries:** Open the control box and insert the two 12V batteries (included).
6. **Connect Power:** Plug the power cord into the control box, then plug the other end into a grounded electrical outlet.
7. **Remote Pairing:** The remote control typically comes pre-paired. If re-pairing is needed, refer to the troubleshooting section.
8. **Install Foot Retainer:** Attach the foot retainer bar at the foot of the bed to keep the mattress in place during adjustments.
9. **Place Mattress:** Position your mattress on the bed frame. The frame is compatible with memory foam, latex, hybrid, and gel mattresses.



Image: Adjustable bed frame setup options: directly on the ground or within an existing bed frame.

5. OPERATING INSTRUCTIONS

Your adjustable bed frame is controlled by a backlit wireless remote. Ensure the remote's AAA batteries are installed correctly.

5.1 Remote Control Functions

- **Head Incline:** Use the designated buttons to raise or lower the head section (0-65°).
- **Foot Incline:** Use the designated buttons to raise or lower the foot section (0-38°).
- **Zero Gravity (ZG):** Press the ZG button to activate the pre-programmed zero-gravity position, designed to relieve pressure.
- **Anti-Snore:** Press the Anti-Snore button to slightly elevate the head, which may help reduce snoring.
- **Flat:** Press the Flat button to return the bed to a completely flat position.
- **Massage:** Activate the massage function using the dedicated button. Note that the intensity may vary based on mattress type.

- **Memory Presets:** The remote allows you to save your favorite positions. To set a memory position, adjust the bed to your desired setting, then press and hold the 'Flat' and 'Memory' buttons simultaneously for 10 seconds until the remote blinks.
- **Child Lock:** Activate or deactivate the child lock feature as needed to prevent accidental adjustments.

Independent Back And Foot Tilt Controls

Find your perfect sleep position with customizable head and leg tilt adjustment



Image: Independent head and foot tilt controls with angle ranges.

5.2 Additional Features

- **USB & Type C Ports:** Located on the side of the bed frame, these ports provide convenient charging for electronic devices.
- **Under-Bed Lights:** The integrated under-bed lighting can be activated via the remote. The lights automatically turn off after five minutes.
- **Remote Control Pocket:** A side pocket is provided for convenient storage of the wireless remote.

Enjoy Convenient Life

More details designed to add convenience to your life

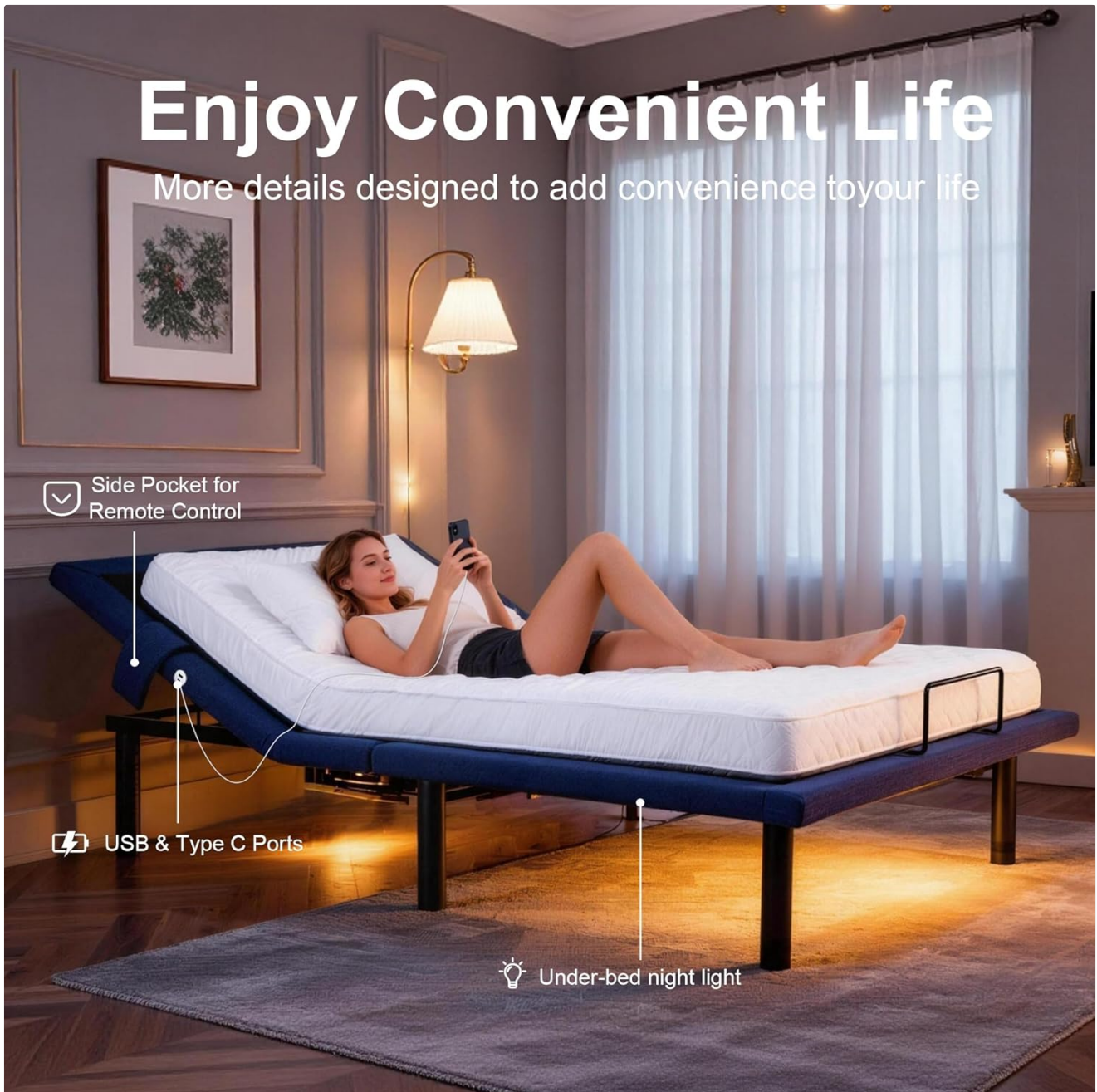


Image: Convenience features including USB ports, remote pocket, and under-bed lighting.

6. FEATURES OVERVIEW

- **Universal Mattress Compatibility:** The frame is compatible with various mattress types, including memory foam, latex, hybrid, and innerspring.
- **Durable Quiet Motors:** Equipped with motors designed for smooth and quiet operation during adjustments.
- **Stain-Resistant Fabric:** The bed frame is upholstered in a premium fabric that resists stains, water, and oil, allowing for easy cleaning.
- **Pillow-Tilt Feature:** Provides additional head support for personalized alignment.
- **Lumbar Support Bar:** Offers targeted support for the lower back.



Image: Compatibility with various mattress types.



Image: Durable quiet motors, foot retainer, adjustable legs, and corner protection.



Image: Various adjustable bed positions for different activities.

7. MAINTENANCE

- **Fabric Cleaning:** The stain-resistant fabric allows for easy cleaning. For spills, wipe immediately with a clean,

damp cloth. Avoid harsh chemicals.

- **General Cleaning:** Dust the frame regularly with a soft, dry cloth.
- **Motor Inspection:** Periodically check motor connections and cables for any signs of wear or damage. Ensure all connections are secure.

8. TROUBLESHOOTING

- **Bed Not Responding:**
 - Check if the power cord is securely plugged into both the bed frame and the wall outlet.
 - Verify that the batteries in the control box are correctly installed and have sufficient charge.
 - Ensure the remote control batteries (AAA) are not depleted and are inserted with correct polarity.
 - If the remote is not paired, press and hold the 'Flat' and 'Memory' buttons on the remote for 10 seconds until the remote blinks to re-pair it with the control box.
- **Unusual Noises:** While motors are designed to be quiet, minor operational sounds are normal. If loud or unusual noises occur, inspect for any obstructions or loose components.
- **Massage Function Weak:** The effectiveness of the massage feature can be influenced by the type and thickness of your mattress. This is generally normal behavior.

9. SPECIFICATIONS

Manufacturer	Fromann
Model Number	9.01.1041390-TXL
Product Dimensions (Flat)	79 x 37 x 14 inches (L x W x H)
Item Weight	112.2 pounds
Size	Twin XL-Dual Motor
Special Features	Adjustable, Massage, USB Charging, Underbed Lighting, Zero Gravity Mode, Anti-Snore, Child Lock
Head Incline Range	0-65°
Foot Incline Range	0-38°
Maximum Weight Capacity	750 lbs
Batteries Required	2 x 12V (for control box, included), AAA (for remote, included)
Assembly Required	Yes

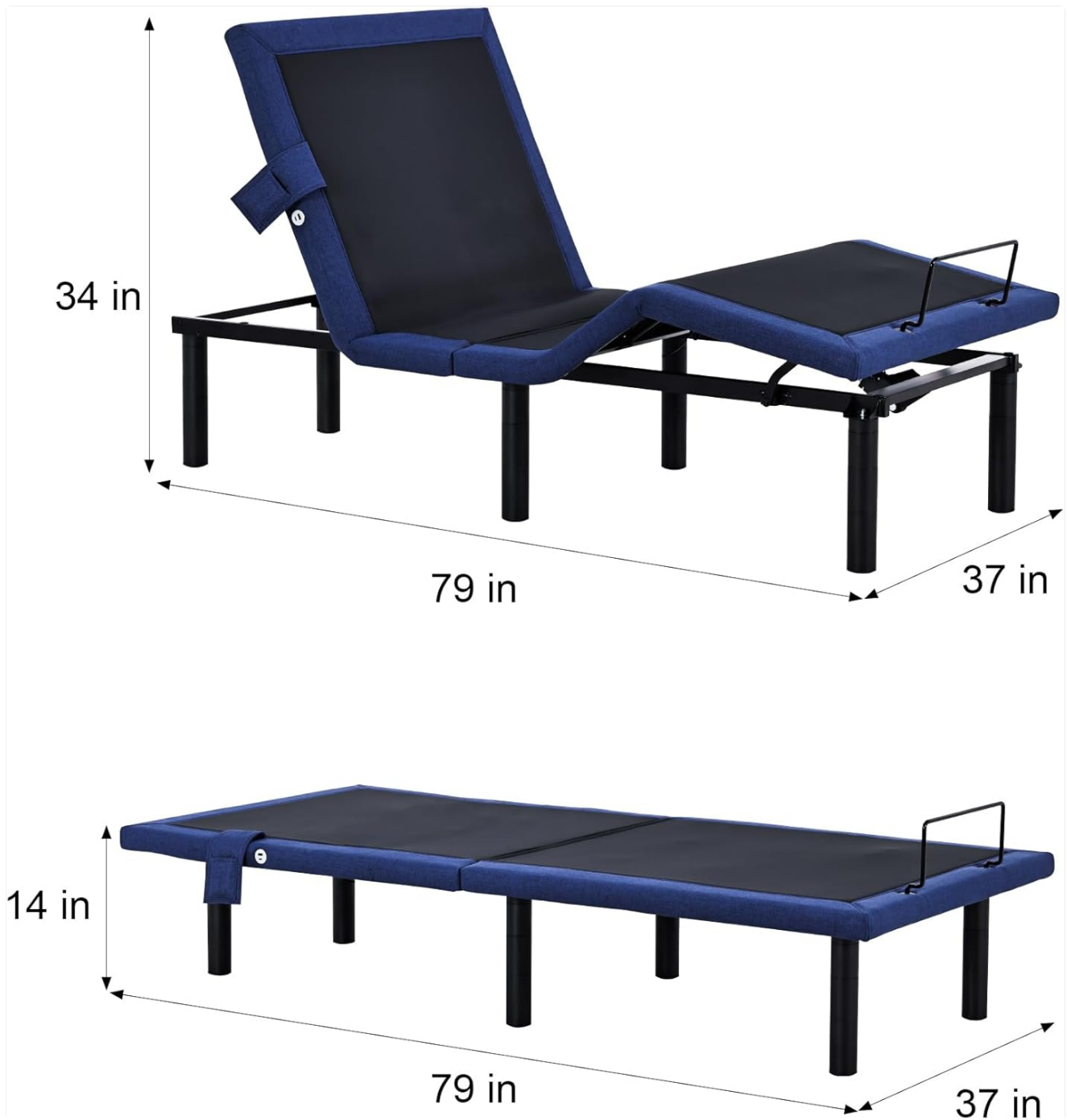


Image: Product dimensions in flat and inclined positions.

10. WARRANTY AND SUPPORT

For warranty information or technical support, please contact Fromann customer service directly. Refer to your purchase documentation for specific warranty terms and contact details.

Manufacturer: Fromann

ASIN: B0FX8579GR