



Manuals.plus /

› Goyappin /

› Goyappin Steam Cleaner HC 3800 PRO-1 User Manual

Goyappin HC 3800 PRO-1

Goyappin Steam Cleaner HC 3800 PRO-1 User Manual

Model: HC 3800 PRO-1

1. IMPORTANT SAFETY INSTRUCTIONS

Please read all instructions carefully before using the appliance. Failure to follow these instructions may result in electric shock, fire, or serious injury. Keep this manual for future reference.

- **Electrical Safety:** Always connect the steam cleaner to a grounded outlet. Use a Ground Fault Circuit Interrupter (GFCI) outlet or adapter for added safety, especially when operating near water. Do not operate with a damaged cord or plug.
- **High Temperature Steam:** The steam cleaner produces high-temperature steam (up to 221°F / 105°C) and pressure (3 Bar). Avoid direct contact with steam to prevent burns. Keep hands, face, and body away from the nozzle during operation.
- **Hot Surfaces:** The nozzle and hose can become very hot during and after use. Handle with care and allow the unit to cool completely before storing or changing accessories. Protective gloves are recommended.
- **Water and Electricity:** Never immerse the main unit, power cord, or plug in water or other liquids. Do not operate the appliance with wet hands.
- **Assembly:** Ensure all attachments are securely fastened before use. Loose connections, especially at the nozzle, can lead to hot water or steam leakage.
- **Children and Pets:** Keep the appliance out of reach of children and pets. Do not allow them to operate or play near the steam cleaner.
- **Water Tank:** Only fill the water tank with clean tap water. Do not add detergents, perfumes, or other chemicals, as this can damage the unit or create hazardous fumes.
- **Storage:** Store the appliance in a cool, dry place when not in use.

2. PRODUCT OVERVIEW

The Goyappin HC 3800 PRO-1 is a powerful 2500W steam cleaner designed for deep cleaning various surfaces without the need for harsh chemicals. It features rapid heat-up and adjustable steam control for

versatile applications.

2.1 Package Contents

Verify that all items are present in the package:

- Goyappin Steam Cleaner Main Unit
- Spray Gun Handle with Hose
- Steel Brush
- Nylon Brush
- Large Round Brush
- Glass/Fabric Tool
- Copper Nozzle
- Extension Tube
- User Manual
- Storage Bag
- Protective Gloves
- Sealing Rings (Spare)



Figure 2.1: Goyappin Steam Cleaner and Accessories. This image displays the main steam cleaner unit, spray gun handle, various brush attachments (steel, nylon, large round), glass/fabric tool, copper nozzle, extension tube, user manual, storage bag, protective gloves, and spare sealing rings.

2.2 Key Features

- **High Power & Rapid Heat-Up:** 2500W heating element reaches 221°F (105°C) and 3 Bar pressure in approximately 15 seconds.
- **Large Water Tank:** 1200mL capacity reduces the need for frequent refills.
- **Adjustable Steam Control:** 6-level steam output for precise cleaning on different surfaces.
- **Extended Reach:** 78-inch hose combined with a 78-inch power cord provides a total reach of 156 inches.
- **Versatile Attachments:** Includes specialized tools for various cleaning tasks, from delicate surfaces to stubborn grime.
- **Chemical-Free Cleaning:** Utilizes only water for sanitization and cleaning, safe for homes with children and pets.

3. SETUP

Follow these steps to prepare your steam cleaner for use:

1. **Add Water:** Ensure the unit is unplugged. Open the water tank cap and carefully pour clean tap water into the 1200mL tank. Do not overfill. Close the cap securely.



Figure 3.1: Adding water to the steam cleaner. The image shows a hand pouring water into the designated opening on the main unit, which is part of a larger diagram illustrating multiple steps.

2. **Install Brush Heads/Attachments:** Select the appropriate attachment for your cleaning task. Securely attach it to the spray gun handle. Ensure the rubber ring is correctly placed at the nozzle or extension rod connection to prevent water leakage. For flat scrapers, ensure the rubber strip is at the front end to avoid scratching surfaces.

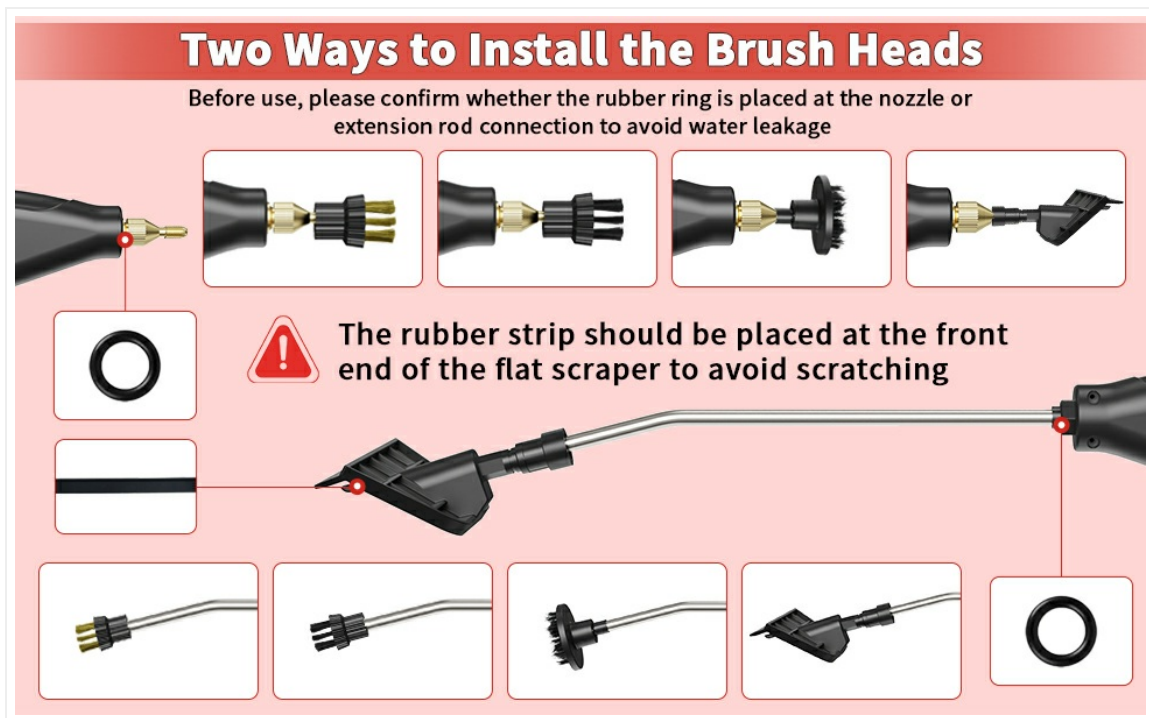


Figure 3.2: Attachment Installation Guide. This diagram illustrates how to correctly attach various brush heads and the extension rod to the spray gun, emphasizing the proper placement of sealing rings and rubber strips.

3. **Connect Power Supply:** Plug the power cord into a suitable 110V grounded electrical outlet.

4. OPERATING INSTRUCTIONS

Once set up, follow these steps to operate your Goyappin Steam Cleaner:

1. **Power On and Heat Up:** Press the power button on the main unit. The cleaner will begin heating up, typically reaching operating temperature in about 15 seconds. The display will show the current steam level.
2. **Adjust Steam Volume:** Use the '+' and '-' buttons on the main unit or the spray gun handle to select one of the 6 available steam levels. Higher levels provide more powerful steam for tougher stains.

Easy to use, operated from a distance

No button on the spray gun handle, and the operation requires machine control and cannot be operated remotely



Spray gun handle can be synchronously adjusted to control the switch and air output (Gear 1-6)



Figure 4.1: Remote Operation. This image illustrates the convenience of adjusting steam settings directly from the spray gun handle, allowing for easier operation compared to models requiring adjustments on the main unit.

3. **Begin Cleaning:** Point the spray gun handle with the attached accessory towards the surface to be cleaned. Press the trigger on the handle to release steam. Move the attachment slowly over the surface, allowing the steam to penetrate and loosen dirt.
4. **Cleaning Applications:**
 - **Steel Brush:** Ideal for burnt-on residue on pots, cooktops, and grills.
 - **Nylon Brush:** Suitable for delicate furniture, toys, and upholstery.
 - **Large Round Brush:** Effective for floors, walls, and tile grout.
 - **Glass/Fabric Tool:** Use for de-wrinkling curtains, sanitizing mirrors, and cleaning windows.
 - **Copper Nozzle:** Excellent for car detailing in vents and tight seals.
 - **Extension Tube:** Extends reach for high or low areas, such as ceilings or under furniture.

Chemical-Free

Deep cleaning power without the need for harsh chemicals
Pure natural, Safe to use around kids & pets



Figure 4.2: Versatile Cleaning. This image demonstrates the steam cleaner's effectiveness on various surfaces including tiles, sofas, windows, slide seams, cooktops, and range hoods, using different attachments like the big round brush, glass tool, nylon brush, steel brush, and extension pole.

5. **After Use:** Release the trigger to stop steam. Unplug the unit from the power outlet. Allow the unit to cool down completely before handling or storing.

5. MAINTENANCE

Regular maintenance ensures optimal performance and extends the lifespan of your steam cleaner.

- **Draining Water:** After each use, once the unit has cooled, carefully drain any remaining water from the tank. This prevents mineral buildup.
- **Cleaning Attachments:** Clean all attachments with water and mild soap after use. Ensure they are dry before storing.
- **Descaling (if necessary):** If you notice reduced steam output or mineral buildup, descale the unit according to manufacturer recommendations (typically using a diluted vinegar solution, but consult specific instructions if provided by Goyappin).
- **Storage:** Store the steam cleaner and its accessories in the provided storage bag in a cool, dry place, away from direct sunlight and extreme temperatures.

6. TROUBLESHOOTING

If you encounter issues with your steam cleaner, refer to the following common problems and solutions:

Problem	Possible Cause	Solution
No steam or very little steam.	Water tank is empty. Unit not heated sufficiently. Mineral buildup in the system.	Refill water tank. Allow 15-30 seconds for the unit to heat up after powering on. Perform descaling procedure.
Water leaking from nozzle/attachments.	Attachments not securely fastened. Rubber sealing ring is missing or damaged.	Ensure attachments are tightened properly. Check and replace the rubber sealing ring if necessary.
Unit does not power on.	Not plugged in. Power outlet malfunction.	Check power connection. Test the outlet with another appliance or try a different outlet.

If the problem persists after trying these solutions, please contact Goyappin customer support.

7. SPECIFICATIONS

Feature	Detail
Model Name	HC 3800 PRO-1
Brand	Goyappin
Wattage	2500 watts
Voltage	110 Volts
Heat Time	15 seconds
Maximum Temperature	221°F (105°C)
Steam Pressure	3 Bar
Water Tank Volume	1200 Milliliters (1.2L)
Hose Length	78 inches
Power Cord Length	78 inches
Total Reach	156 inches
Item Weight	1.96 Kilograms (4.31 pounds)
Dimensions (L x W x H)	7.2 x 5.9 x 5.2 inches (main unit)
Included Components	Brass Brush, Extension Tube, Nozzle, Nylon Brush, User Manual, Steel Brush, Large Round Brush, Glass/Fabric Tool, Copper Nozzle, Storage Bag, Protective Gloves, Sealing Rings

8. WARRANTY AND SUPPORT

For warranty information, technical support, or replacement parts, please contact Goyappin customer

service through the retailer where the product was purchased or visit the official Goyappin website.
Please have your model number (HC 3800 PRO-1) and purchase date available when contacting support.