

cl0nT5zqY

# BL13 Wireless Bone Conduction Headphones

Instruction Manual

## 1. INTRODUCTION

Thank you for choosing the BL13 Wireless Bone Conduction Headphones. This manual provides essential information for the safe and effective use of your new stereo sports headset. Please read this manual thoroughly before using the product and retain it for future reference.

The BL13 headphones are designed for active lifestyles, offering a comfortable and secure fit with bone conduction technology, allowing you to stay aware of your surroundings while enjoying audio.

## 2. SAFETY INFORMATION

To ensure safe operation and prevent damage, please observe the following precautions:

- Do not expose the headphones to extreme temperatures, humidity, or corrosive substances.
- Avoid dropping or subjecting the headphones to strong impacts.
- Do not disassemble, repair, or modify the product yourself. Contact qualified service personnel for assistance.
- Clean the headphones with a soft, dry cloth. Do not use harsh chemicals or abrasive materials.
- Prolonged listening at high volume levels may cause hearing damage. Adjust volume to a safe level.
- Be aware of your surroundings when using the headphones, especially in traffic or other potentially hazardous situations.

## 3. PACKAGE CONTENTS

Please check the package contents upon opening. If any items are missing or damaged, contact your retailer.










- BL13 Wireless Bone Conduction Headphones
- USB Charging Cable
- User Manual

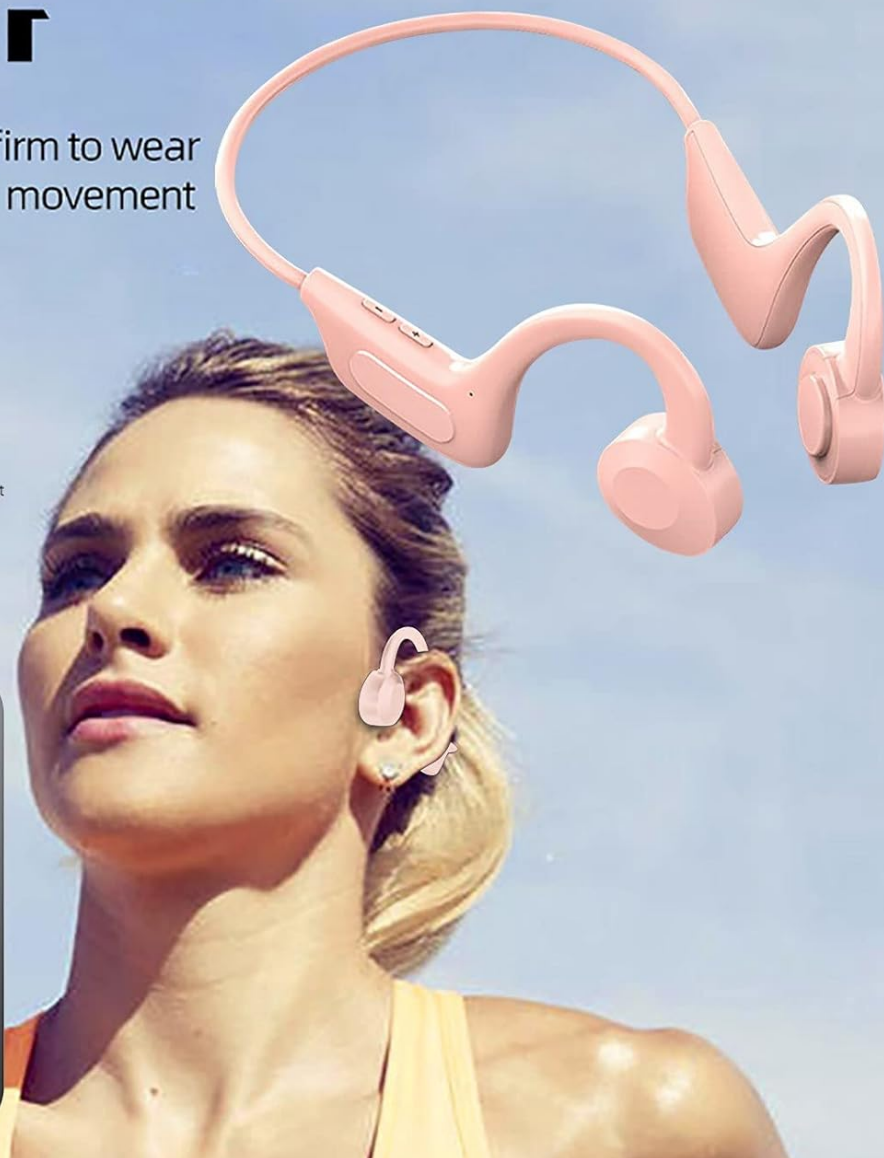
## 4. PRODUCT OVERVIEW

Familiarize yourself with the components of your BL13 headphones.

# Not listening to music exercise is safer

Ergonomic design, more firm to wear  
Stable balance, unlimited movement

 Acoustic Conduction Technology	 Waterproof and sweatproof	
 Can't get rid of	 Lightweight and portable	 Bending without deformation
 Extended battery life	 Dynamic sound	 HD call



**Figure 4.1:** BL13 Headphones in use, illustrating key features and the Micro USB charging port/memory card slot. The design emphasizes ergonomic fit, stable balance, and unlimited movement. Features include Acoustic Conduction Technology, Waterproof and Sweatproof design, Lightweight and Portable build, Bending without deformation, Extended Battery Life, Dynamic Sound, and HD Call capability.



**Figure 4.2:** Front view of the BL13 Wireless Bone Conduction Headphones, showcasing their ergonomic design and the placement of control buttons on the right side. The flexible band connects the two bone conduction transducers that rest near the ears.

### Controls and Indicators:

- **Power Button:** Press and hold to power on/off. Short press for play/pause.
- **Volume Up (+):** Short press to increase volume. Long press for next track.
- **Volume Down (-):** Short press to decrease volume. Long press for previous track.
- **Micro USB Port:** For charging the headphones.
- **Memory Card Slot:** For playing audio directly from a memory card (if applicable, based on image).
- **LED Indicator:** Shows power status, pairing status, and charging status.
- **Microphone:** For hands-free calls.

## 5. SETUP

### 5.1 Charging the Headphones

1. Connect the small end of the USB charging cable to the Micro USB port on the headphones.
2. Connect the other end of the USB cable to a USB power adapter (not included) or a computer's USB port.
3. The LED indicator will show the charging status (e.g., red while charging, blue when fully charged).
4. A full charge typically takes approximately 2 hours.

## 5.2 Pairing with a Bluetooth Device

1. Ensure the headphones are turned off.
2. Press and hold the Power button for approximately 3-5 seconds until the LED indicator flashes red and blue alternately, indicating pairing mode.
3. On your Bluetooth-enabled device (smartphone, tablet, computer), enable Bluetooth and search for new devices.
4. Select "BL13" from the list of available devices.
5. Once paired, the LED indicator will turn solid blue or flash blue slowly, and you may hear a confirmation tone.
6. If prompted for a password, enter "0000".

*Note: The headphones will automatically attempt to reconnect to the last paired device when powered on.*

## 5.3 Wearing the Headphones

Place the headphones around the back of your head with the transducers resting on your cheekbones, just in front of your ears. The band should rest comfortably over your neck. Adjust for a secure and comfortable fit.

# 6. OPERATING INSTRUCTIONS

---

## 6.1 Power On/Off

- **Power On:** Press and hold the Power button for 2 seconds. The LED indicator will flash blue.
- **Power Off:** Press and hold the Power button for 3 seconds. The LED indicator will flash red and then turn off.

## 6.2 Music Playback

- **Play/Pause:** Short press the Power button.
- **Volume Up:** Short press the "+" button.
- **Volume Down:** Short press the "-" button.
- **Next Track:** Long press the "+" button.
- **Previous Track:** Long press the "-" button.

## 6.3 Phone Calls

- **Answer Call:** Short press the Power button when an incoming call rings.
- **End Call:** Short press the Power button during a call.
- **Reject Call:** Long press the Power button when an incoming call rings.
- **Redial Last Number:** Double-press the Power button.

## 6.4 Using the Memory Card (if applicable)

If your BL13 headphones support memory card playback, insert a compatible memory card (e.g., MicroSD) into the designated slot. The headphones should automatically switch to memory card playback mode. Use the music playback controls to manage tracks.

# 7. MAINTENANCE AND CARE

---

- **Cleaning:** Wipe the headphones with a soft, slightly damp cloth. Do not use abrasive cleaners or immerse in water.
- **Storage:** Store the headphones in a cool, dry place away from direct sunlight and extreme temperatures.
- **Battery Care:** To prolong battery life, charge the headphones regularly, even if not in use for extended periods.

Avoid fully discharging the battery frequently.

## 8. TROUBLESHOOTING

Problem	Possible Cause	Solution
Headphones do not power on.	Low battery.	Charge the headphones fully.
Cannot pair with device.	Headphones not in pairing mode; Bluetooth off on device; device too far.	Ensure headphones are in pairing mode (flashing red/blue). Turn on Bluetooth on your device. Move device closer to headphones (within 10 meters).
No sound or low volume.	Volume too low on headphones or device; not properly paired.	Increase volume on both headphones and connected device. Repair the headphones.
Sound distortion.	Interference; device too far; low battery.	Move away from sources of interference. Move device closer. Charge headphones.

## 9. SPECIFICATIONS

<b>Model Number:</b>	cl0nT5zqY
<b>Product Name:</b>	BL13 Wireless Bone Conduction Headphones
<b>Connectivity:</b>	Bluetooth
<b>Technology:</b>	Bone Conduction
<b>Microphone:</b>	Yes
<b>Charging Port:</b>	Micro USB
<b>Manufacturer:</b>	Generic
<b>First Available Date:</b>	July 30, 2025

## 10. WARRANTY AND SUPPORT

For warranty information or technical support, please refer to the documentation provided with your purchase or contact the retailer where you purchased the product. Keep your proof of purchase for warranty claims.

For common issues, please refer to the Troubleshooting section of this manual.

