

Muzata MZZ1600

Muzata HT10 HL10 HT14 Flat Handrail Accessories - Vertical Pivot Connector (HA23 BNP) Instruction Manual

Model: MZZ1600 | Brand: Muzata

PRODUCT OVERVIEW

The Muzata HA23 Vertical Pivot Connector is a high-strength POM fitting designed for Muzata HT10, HL10, and HT14 flat handrails. This accessory is crucial for creating adaptable cable railing systems, particularly for stair applications where angles vary from 0° to 90°.

Key features include:

- **Custom Designed:** Specifically for Muzata HT10, HL10, HT14 flat handrails.
- **Stair Applications:** Adjustable from 0° to 90° for various staircase angles.
- **High Quality:** Made from high-strength POM for indoor and outdoor durability, offering good dimensional stability and mechanical strength.
- **Easy to Install:** Weldless design with included installation accessories (screws and cobalt drill bits).

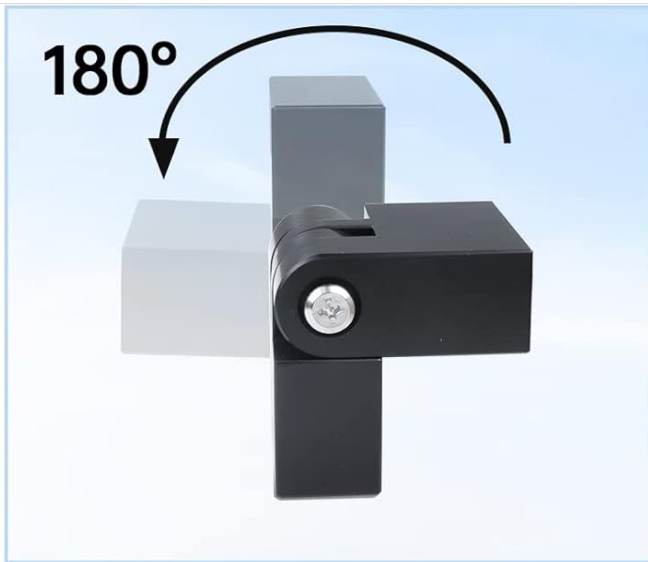


Image: Two Muzata HA23 Vertical Pivot Connectors in black, shown individually and integrated into a handrail system.

SETUP AND INSTALLATION

Proper installation ensures the stability and longevity of your handrail system. Follow these steps carefully.

Tools and Components



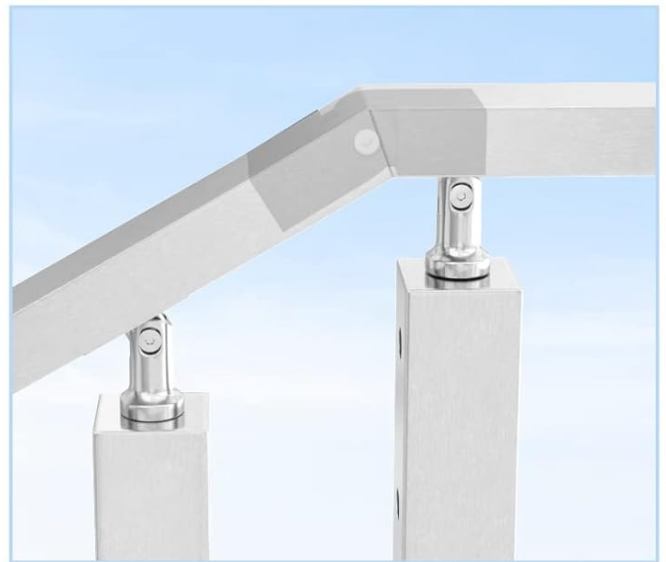
Multi-angle



Weldless



High strength POM



Invisible

Image: A diagram showing the included components: 2 pivot connectors, 2 pivot screws, 8 handrail screws, and 1 drill bit.

Installation Steps for Vertical Pivot Connectors

The HA23 connector is designed for angled sections of handrails, particularly on stairs.

1. **Adjust and Fix Angle:** Position the pivot connector to the desired angle for your staircase.
2. **Connect Angle Handrails:** Insert the handrail ends into the connector.
3. **Install on Posts:** Secure the handrail assembly onto the posts, ensuring correct bracket orientation.
4. **Finish:** Complete the assembly by tightening all screws.

How to Build a Cable Railing System?



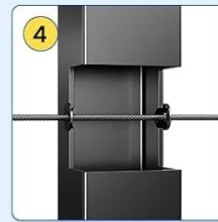
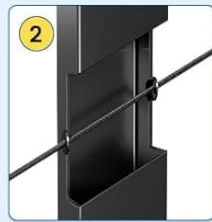
36 inches



Surface mount



Black



Stair Kit
RWS1 BA4S

Level Kit
RWS2 BH4S

Corner Post
PS02 B34S

Handrail & Connector



HT10 BP4



HA01



HA02



HA23

1

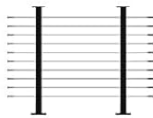
Terminal
CB17



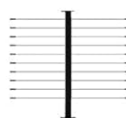
Stair Kit
RWS1 BA4S



Level Kit
RWS2 BH4S



Level Post
PS02 BH4S



Stair Post
PS01 BA4S



Corner Post
PS02 B34S

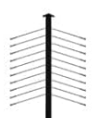


Image: A four-step visual guide demonstrating the installation process of the vertical pivot connector on a handrail.

Video Guides

Easy Installation - Muzata Handrail Connectors for HT10

Video: A detailed animation demonstrating the installation of Muzata handrail connectors, including the HA23 vertical pivot connector, for the HT10 handrail system.

How to Connect Handrail on Level Corner to Angle Section?

Video: An instructional video showing how to properly connect handrail sections, specifically addressing the transition from a level corner to an angled section using Muzata connectors.

Installation Guide of Muzata RWS2 Cable Railing System

Video: A comprehensive installation guide for the Muzata RWS2 Cable Railing System, providing context for where the HA23 connector fits within a larger railing project.

OPERATING AND FUNCTIONALITY

The HA23 Vertical Pivot Connector allows for seamless transitions in handrail design, accommodating various angles in staircases and sloped sections. Its pivot mechanism enables smooth adjustment, ensuring a continuous and secure handrail flow.

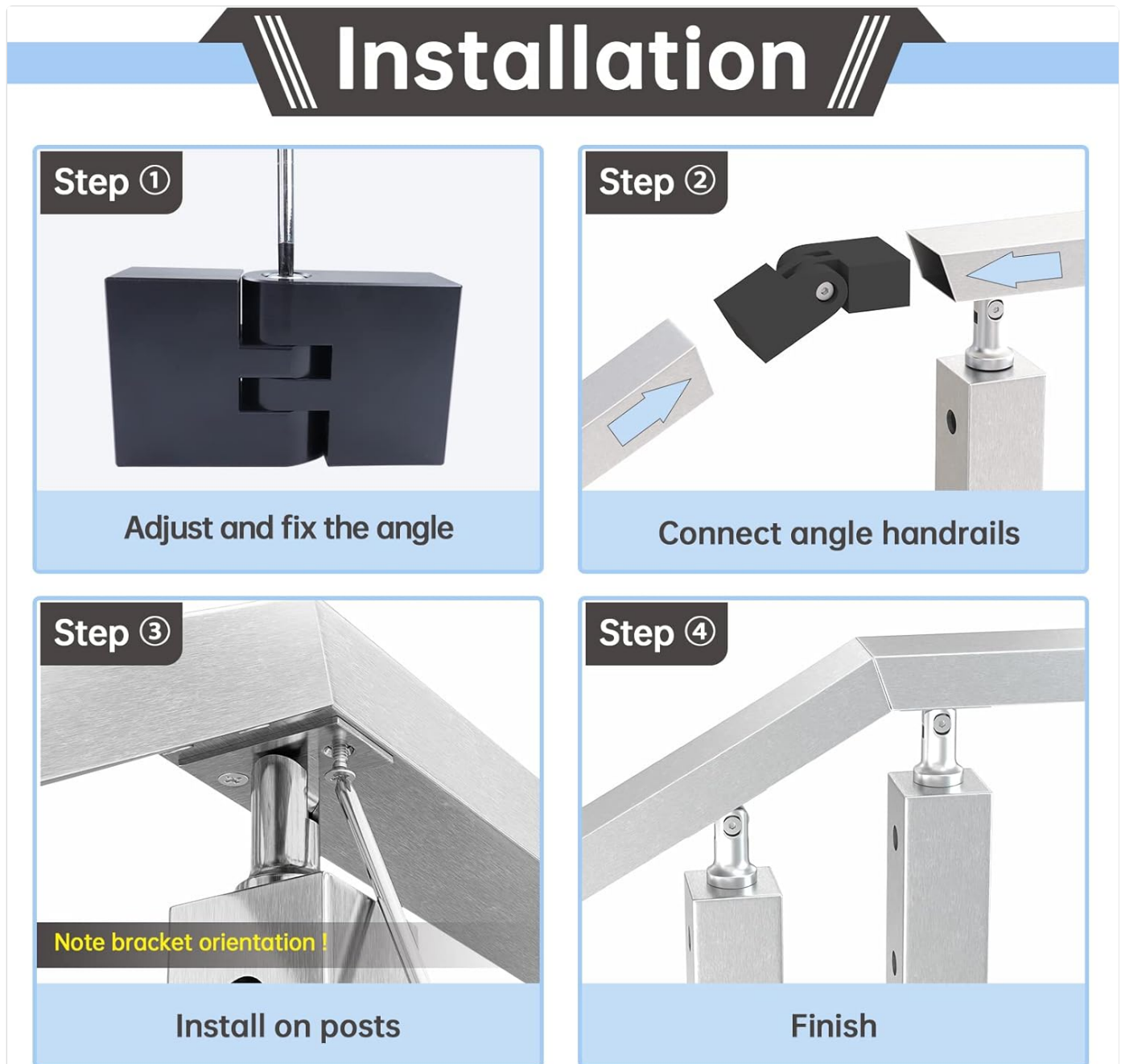


Image: A visual representation of the HA23 connector's features, including multi-angle adjustment (180°), weldless design, high-strength POM material, and invisible integration.

MAINTENANCE

To ensure the longevity and appearance of your Muzata HA23 Vertical Pivot Connectors, follow these simple maintenance guidelines:

- **Cleaning:** Wipe down the connectors periodically with a soft, damp cloth to remove dust and debris. For stubborn dirt, use a mild soap solution and rinse thoroughly. Avoid abrasive cleaners or harsh chemicals, as they can damage the powder-coated finish.
- **Inspection:** Regularly check all screws and connections to ensure they remain tight. Re-tighten any loose fasteners to maintain structural integrity.

- **Material Care:** The high-strength POM material is designed for durability in both indoor and outdoor environments. While resistant to environmental factors, extreme temperatures or prolonged exposure to direct sunlight may cause minor fading over many years.

TROUBLESHOOTING

Here are some common issues and their potential solutions:

Problem	Possible Cause	Solution
Connector is too tight to fit into handrail.	Manufacturing tolerance or slight deformation.	Apply gentle force, such as a rubber mallet, to tap the connector into place. Ensure proper alignment before applying force.
Difficulty achieving a flush finish with connecting handrails.	Imprecise angle cuts on handrails or incorrect connector alignment.	Ensure handrail ends are cut precisely to the required angle. Double-check connector orientation and alignment before final tightening. Consider using a miter saw for accurate cuts.
Handrail feels loose after installation.	Screws not fully tightened or incorrect pilot hole size.	Verify all screws are tightened securely. Ensure the correct drill bit size (5/32" for connector, 3/16" for handrail) was used for pilot holes.

SPECIFICATIONS

Attribute	Detail
Brand	Muzata
Model Number	MZZ1600
Material	High Strength POM (Plastic)
Color	Black
Style	2× Vertical Pivot Connectors
Finish Type	Powder Coated
Item Weight	1.08 pounds
Package Dimensions	6.02 x 5.94 x 1.85 inches
UPC	765538441847

WARRANTY AND SUPPORT

Muzata is committed to providing high-quality products and excellent customer service. While specific warranty details are not provided in this manual, Muzata offers dedicated after-sales care and comprehensive installation support.

For any questions, concerns, or support needs regarding your Muzata HA23 Vertical Pivot Connectors, please contact Muzata customer service directly through their official channels or the platform where the product was purchased.

