

## Manuals+

[Q & A](#) | [Deep Search](#) | [Upload](#)

manuals.plus /

› [Mikego](#) /

› [Mikego Smart Watch IDW25 User Manual](#)

## Mikego IDW25

# Mikego Smart Watch IDW25 User Manual

Model: IDW25

## 1. INTRODUCTION

This manual provides comprehensive instructions for the Mikego Smart Watch IDW25. It covers setup, operation, maintenance, and troubleshooting to ensure optimal use of your device. The Mikego Smart Watch IDW25 is designed to enhance your daily life with features such as Bluetooth calling, Alexa voice control, extensive health monitoring, and a wide array of sports modes.



Figure 1: Mikego Smart Watch IDW25 (Blue variant shown).

## 2. WHAT'S IN THE BOX

Upon opening the package, verify that all the following components are present:

- Smart watch
- User manual
- Charging Cable

## Size & Package Contents



Figure 2: Package contents including the smartwatch, charging cable, and user manual.

### 3. SETUP GUIDE

#### 3.1 App Installation

To utilize all features of your Mikego Smart Watch IDW25, download the "VeryFit" application from your smartphone's app store (compatible with Android 4.4+ and iOS 9.0+).

#### 3.2 Device Pairing

1. Ensure your smartphone's Bluetooth is enabled.
2. Open the VeryFit app and follow the on-screen instructions to search for and connect to your IDW25 smartwatch.
3. Confirm the pairing request on both your phone and the watch.

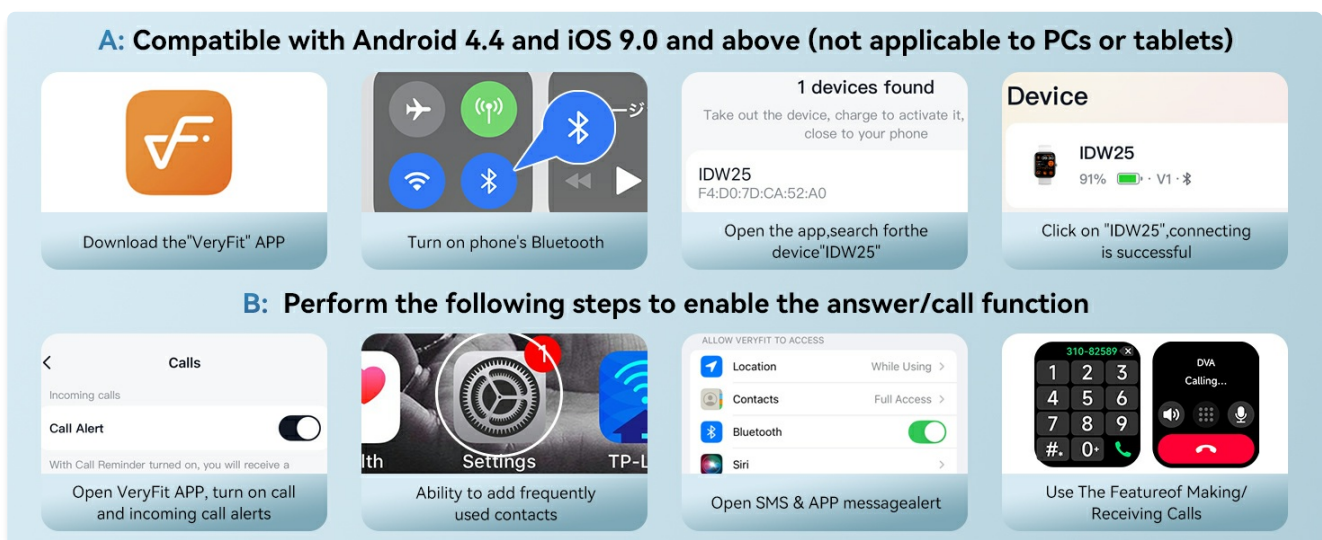


Figure 3: Visual guide for app download and initial device pairing.

#### 3.3 Enabling Call Function

To enable making and receiving calls directly from your watch:

1. Within the VeryFit app, navigate to the call settings.
2. Ensure "Call Alert" is turned on.
3. Grant necessary permissions for location, contacts, and Bluetooth access to the VeryFit app in your phone's settings.
4. You can then use the watch's dial pad or contacts to make calls.



Figure 4: Instructions for activating the Bluetooth call feature.

## 4. OPERATING INSTRUCTIONS

### 4.1 Alexa Voice Control

The Mikego Smart Watch IDW25 features built-in Alexa. Once connected, you can use voice commands for various tasks:

- Control music playback.
- Check weather forecasts.
- Set alarms and reminders.
- Ask general questions.

# Bluetooth Calling & Alexa Voice Assistant



Figure 5: Demonstrates Alexa voice control and notification display.

## 4.2 Notifications

Receive SMS, email, and app notifications directly on your wrist. Please note that replying to messages is not supported directly from the watch.

Alexa  
built-in

Bluetooth  
Call

Smart  
Notifications

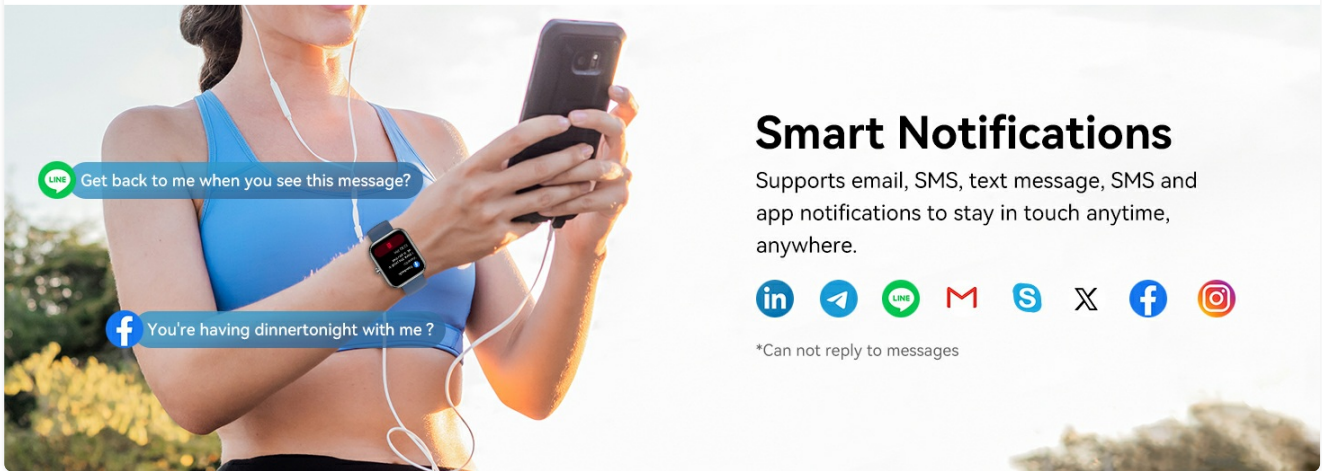


Figure 6: Example of smart notifications on the watch screen.

### 4.3 Display and Watch Faces

The smartwatch features a 1.83-inch HD touchscreen. You can customize your watch face from over 130 available dials within the VeryFit app, or create your own custom watch face using personal photos.

**1.83" HD Touch Screen**

**130+**  
Built in watch faces in Very Fit APP  
customize your watch face

Figure 7: Illustrates the HD screen and diverse watch face options.

#### 4.4 Sport Modes

The IDW25 offers over 100 sports modes, including running, walking, biking, yoga, and pilates. It accurately records calories burned, steps, distance, and exercise time for each activity.



Figure 8: Depicts activity tracking across various sport modes.

## 4.5 Health Tracking

The watch provides 24/7 health monitoring capabilities:

- **Heart Rate Monitoring:** Tracks your heart rate continuously, providing real-time data.
- **Sleep Monitoring:** Analyzes your sleep patterns, including deep sleep, light sleep, REM, and awake times.
- **Blood Oxygen Monitoring (SpO2):** Monitors oxygen balance and displays SpO2 levels in real-time.
- **Female Menstrual Cycle Tracking:** Track your menstrual cycle and predict ovulation dates via the VeryFit app.

*Note: Health data is for reference only and should not be used as a substitute for professional medical advice.*

# 24/7 Health Monitoring



Heart Rate



Sleep



Blood Oxygen



Figure 9: Overview of 24/7 health monitoring features.

## 4.6 Multifunctionality

The Mikego Smart Watch IDW25 includes several useful functions to simplify your daily routine:

- **Music Control:** Control music playback on your connected smartphone.
- **Camera Control:** Remotely trigger your smartphone's camera.
- **Weather Forecast:** Get real-time weather updates.
- **Stopwatch & Timer:** Essential tools for timing activities.
- **Find Phone:** Locate your misplaced smartphone by making it ring (requires app to be running).
- **Alarm Clock:** Set silent vibrating alarms.
- **Calculator:** Perform basic calculations on your wrist.
- **Sedentary Reminder:** Get alerts to move after periods of inactivity.
- **Water Reminder:** Reminds you to drink water throughout the day.

# Multifunctional Smart watch

Make your daily life easier

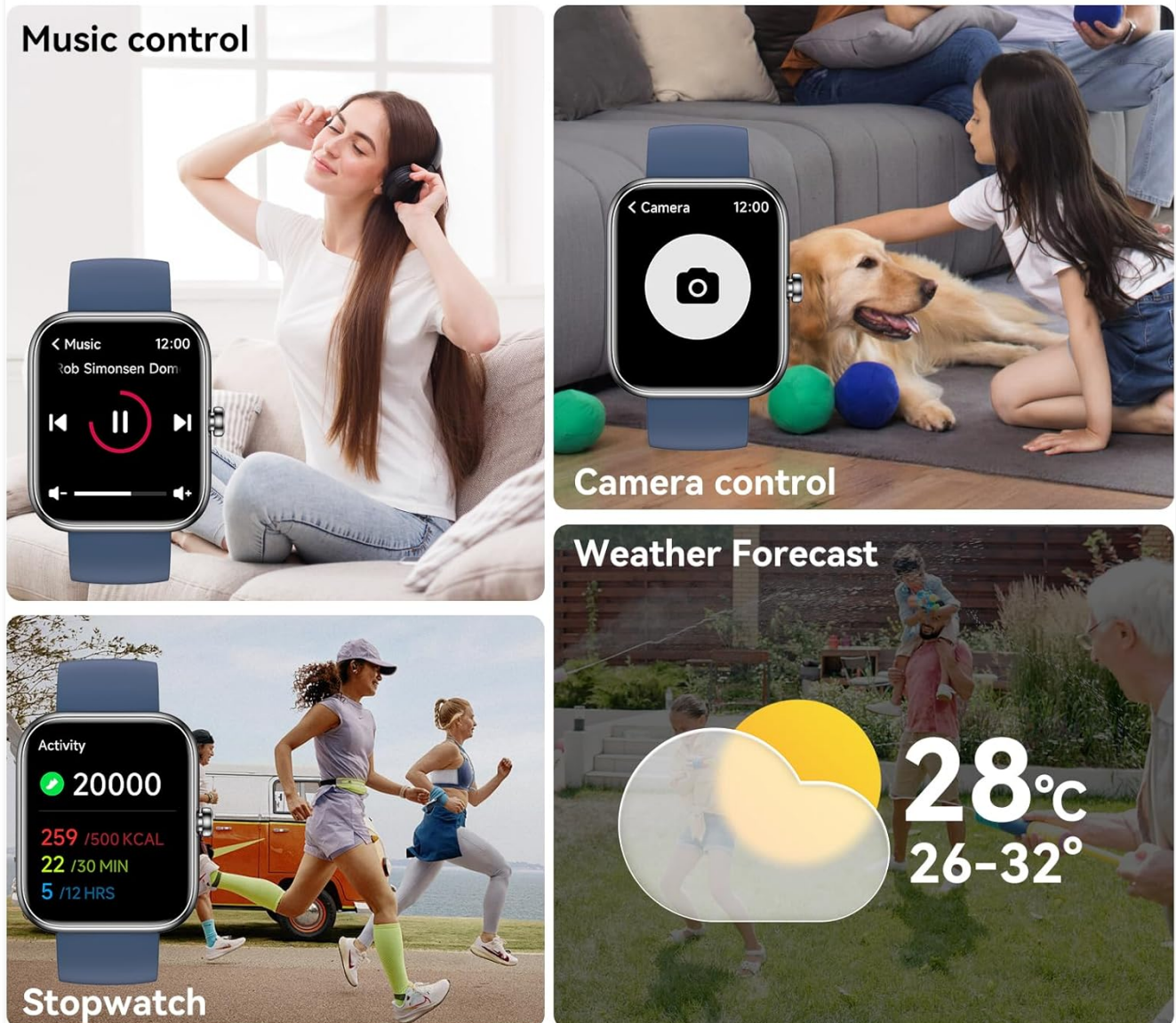


Figure 10: Various smart watch functionalities.

## 5. MAINTENANCE

### 5.1 Waterproof Rating

The Mikego Smart Watch IDW25 has an IP68 waterproof rating, meaning it can withstand daily activities such as hand washing, rain, and swimming. It is not suitable for prolonged immersion in water, hot water, or diving.



# 300 mAh Battery

Magnetic Suction Charging

-  **30 Days**  
Standby time
-  **8 Days**  
Battery life
-  **2 Hours**  
Charging time

## IP68 Waterproof

-  Splash
-  Raining
-  Sweat

Figure 11: Illustrates IP68 waterproof capability and battery life.

## 5.2 Battery and Charging

The watch is equipped with a 300mAh battery. A full charge takes approximately 2 hours and provides up to 8 days of typical use or 30 days of standby time. Use the provided magnetic charging cable.

- Connect the magnetic end of the charging cable to the charging points on the back of the watch.
- Connect the USB end to a standard USB power adapter (not included) or a computer USB port.
- Ensure the charging contacts are clean and dry before charging.

## 6. TROUBLESHOOTING

If you encounter issues with your Mikego Smart Watch IDW25, refer to the following common solutions:

- **Watch not charging:**

- Ensure the charging cable is securely connected to both the watch and the power source.
- Verify that the charging contacts on the watch and cable are clean and free of debris.
- Try a different USB power adapter or USB port.
- Reboot the watch by pressing and holding the side button.

- **Bluetooth connection issues:**

- Ensure Bluetooth is enabled on your smartphone and the watch.
- Make sure the watch is within range of your smartphone.
- Restart both your smartphone and the watch.
- Forget the device in your phone's Bluetooth settings and re-pair it through the VeryFit app.

- **Inaccurate step count or sleep data:**

- Ensure the watch is worn snugly on your wrist.
- Update the VeryFit app to the latest version.
- Calibrate the watch if an option is available in the app.

- **Notifications not appearing:**

- Check notification permissions for the VeryFit app in your phone's settings.
- Ensure notifications are enabled within the VeryFit app for specific applications.
- Verify the watch is connected via Bluetooth.

## 7. SPECIFICATIONS

Feature	Detail
Model Number	IDW25
Screen Size	1.83 Inches HD Touch Color Screen
Battery Capacity	300 mAh
Battery Life	Up to 8 days (typical use), 30 days (standby)
Charging Time	Approx. 2 hours
Waterproof Rating	IP68
Connectivity	Bluetooth 5.3
Operating System Compatibility	Android 4.4+, iOS 9.0+

Feature	Detail
Special Features	Alexa Built-in, Bluetooth Calling, 100+ Sport Modes, 24/7 Heart Rate/Sleep/SpO2 Monitor, Custom Watch Faces, Music/Camera Control, Weather, Alarm, Stopwatch, Find Phone
Item Weight	9.1 ounces
Package Dimensions	7.24 x 3.39 x 0.71 inches

## 8. WARRANTY AND SUPPORT

Mikego is committed to providing excellent customer support for your Smart Watch IDW25.

- **Lifetime Support:** We offer lifetime support and aim to provide satisfied solutions for any issues you may encounter.
- **Quick Email Reply:** Expect a response to your inquiries within 24 hours.
- **30-Day Return Policy:** Enjoy a 30-day no-reason return policy from the date of purchase.
- **1-Year Free Replacement:** Your product is covered by a 1-year free replacement policy for manufacturing defects.

For support, please contact Mikego customer service through the contact information provided on the product packaging or the official Mikego store page.

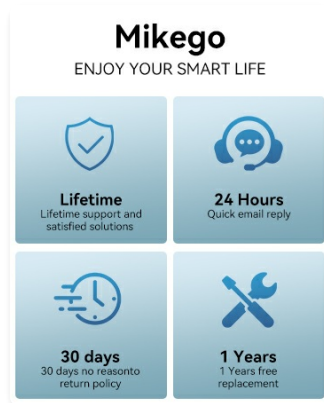


Figure 12: Mikego support and warranty details.