

XIAOMI MJSXJ27CM

XIAOMI Smart Camera C701 4K Ultra HD Instruction Manual

Model: MJSXJ27CM

1. INTRODUCTION

The XIAOMI Smart Camera C701 is a state-of-the-art indoor surveillance camera designed to provide comprehensive monitoring with exceptional clarity. Featuring 4K Ultra HD resolution, 360° panoramic view, and advanced AI detection capabilities, this camera ensures your home and loved ones are always protected. Its dual-band Wi-Fi 6 connectivity offers stable performance, while two-way audio allows for seamless communication. This manual provides detailed instructions for setup, operation, and maintenance to help you maximize your camera's potential.

2. PACKAGE CONTENTS

Please check the package contents upon opening. If any items are missing or damaged, contact customer support.

- XIAOMI Smart Camera C701
- Power Adapter
- USB-A to USB-C Cable
- Wall Mounting Kit (screws, wall plugs, mounting base)
- User Manual

3. PRODUCT OVERVIEW

Familiarize yourself with the components of your XIAOMI Smart Camera C701.



Figure 3.1: Front View of XIAOMI Smart Camera C701. This image shows the camera from the front, highlighting the lens and the spherical design.

Ultra alta definición 4K

Imágenes de alta calidad con refinamiento fotograma a fotograma

Con un sensor de nivel profesional de 8 MP, la cámara ofrece imágenes 4K de ultra alta definición con una claridad cristalina y detalles de gran nitidez.

8 MP

cámara supernítida

f/1.6

lentes de gran apertura

6P

lentes ópticas

5 MP

8 MP

Figure 3.2: Side View of XIAOMI Smart Camera C701. This image displays the camera from a side angle, showing its

compact and rounded form factor.

Calibración HDR¹ Conserva los detalles en las zonas luminosas y oscuras

El modo de alto rango dinámico (HDR) ayuda a la cámara a manejar condiciones de iluminación complejas, conservando más detalles tanto en las zonas luminosas como en las oscuras para obtener imágenes más nítidas y equilibradas.



1. HDR es una función autoadaptable que no requiere una configuración independiente.

Figure 3.3: Rear View of XIAOMI Smart Camera C701. This image illustrates the back of the camera, where the speaker and power port are typically located.



Figure 3.4: XIAOMI Smart Camera C701. A general product image of the camera, showcasing its design.

4. SETUP

4.1 Initial Power-On

1. Connect the USB-C cable to the camera's power port.
2. Plug the USB-A end of the cable into the provided power adapter.
3. Plug the power adapter into a wall outlet. The camera will power on and begin its initialization sequence.

4.2 App Installation and Connection

To control and monitor your camera, you need to install the Xiaomi Home app (or Vsees app as suggested by video, but Xiaomi Home is more likely for a Xiaomi product). For this manual, we will refer to the general process of connecting via an app.

1. Download the official Xiaomi Home app from your smartphone's app store (Google Play Store or Apple App Store).
2. Register or log in to your Xiaomi account.
3. In the app, tap the "+" icon to add a new device.
4. Select "Add Device" and follow the on-screen instructions to find your camera.

5. Scan the QR code located on the bottom of the camera when prompted by the app.
6. Connect the camera to your Wi-Fi network by entering your Wi-Fi name and password in the app.
Ensure your phone and camera are close to the router during this process.
7. Once connected, you can name your camera and begin using it.

4.3 Physical Installation (Optional)

The camera can be placed on a flat surface or mounted on a wall or ceiling.



Figure 4.1: Installation Options and Storage. This image shows the camera placed vertically on a table and inverted for ceiling mounting, along with an illustration of microSD card insertion.

1. **Desktop Placement:** Place the camera on a stable, flat surface like a table or shelf.
2. **Wall/Ceiling Mounting:**
 - Choose a suitable location for installation. Ensure the network connection is stable.
 - Use the provided mounting base as a template to mark the drill holes.
 - Drill holes and insert the wall plugs.
 - Secure the mounting base to the wall/ceiling with screws.
 - Attach the camera to the mounting base, ensuring it clicks securely into place.
 - If mounting inverted, adjust the camera's image orientation in the app settings for normal viewing.

4.4 Setup Videos

Watch these videos for visual guidance on setting up your camera.

Your browser does not support the video tag.

Video 4.1: Wireless Connection and 4K Camera Operation Guide. This video provides a step-by-step guide on how to connect the camera wirelessly and demonstrates its basic 4K operation. (Source: AKINGUAR Direct)

Your browser does not support the video tag.

Video 4.2: Scan QR Code to Add Indoor Surveillance Camera. This video illustrates the process of adding the camera to the app by scanning its QR code, a crucial step for initial setup. (Source: AKINGUAR Direct)

5. OPERATING INSTRUCTIONS

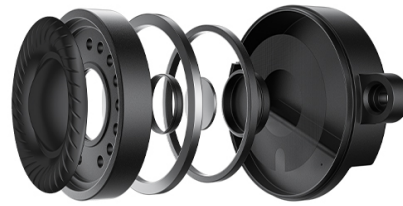
5.1 Live View and Control

Access the live feed from your camera through the Xiaomi Home app. You can pan, tilt, and zoom to get a full view of the monitored area.

Llamadas de voz bidireccionales¹ Habla y escucha con facilidad y claridad

Admite llamadas de voz bidireccionales con captación de audio nítida y transmisión alta, lo que te permite charlar sin esfuerzo con tu familia, independientemente de la distancia.

1. Las llamadas de voz bidireccionales se pueden iniciar a través de la aplicación Xiaomi Home. No puedes llamar directamente desde la cámara.
2. El altavoz de gran diámetro es un altavoz grande con una cavidad de sonido independiente.



Altavoz de gran diámetro²

Para un sonido más alto y claro.

Micrófono inteligente con cancelación de ruido

Para comunicaciones nítidas.

Figure 5.1: Flexible Rotation. This image highlights the camera's ability to rotate 360 degrees horizontally and tilt 109 degrees vertically, offering comprehensive coverage.

Rotación flexible Protege tu hogar con un sencillo mando a distancia

El cardán de doble motor con ángulo de visión horizontal de 360° y vertical de 109° te permite controlar el movimiento de giro e inclinación de forma remota para disfrutar de una monitorización doméstica flexible.

109°
inclinación vertical

360°
giro horizontal



Figure 5.2: Automatic Monitoring. This image shows the app interface displaying options for panoramic monitoring, timed monitoring, and fixed-point monitoring for specific areas.

5.2 Two-Way Audio

The camera supports two-way voice calls, allowing you to communicate with individuals in the monitored area through the app.

Cuatro capas de protección de la privacidad Seguro y fiable para un uso sin preocupaciones

Se han diseñado cuatro capas de protección de la privacidad para salvaguardar tus datos desde todos los ángulos, lo que proporciona a su familia total tranquilidad.

Protección contra ataques

Chipset de seguridad MJAI1 integrado
Protección de privacidad de nivel financiero
contra ataques de hackers.



Protección de la lente en el origen

Protección de lente temporizada
Protección de lente durante un tiempo específico
Protección de lente de elevación manual
Ofrece protección física de la lente
Funcionamiento sencillo con un solo toque
sin necesidad de pasos complicados.



Computación local

Las funciones basadas en AI se procesan
localmente sin necesidad de usar servidores
en la nube, lo que garantiza un rendimiento
rápido y seguro.



Transmisión cifrada

Los datos transmitidos a la nube están
protegidos con varias capas de cifrado,
lo que garantiza una comunicación segura y
elimina el riesgo de fugas.



Figure 5.3: Two-Way Voice Calls. This image illustrates the internal components of the camera's speaker and microphone, emphasizing clear audio capture and transmission for two-way communication.

5.3 AI Detection and Tracking

The camera features advanced AI for intelligent detection and tracking of humans and pets, sending instant

notifications to your smartphone.

Alta sensibilidad a la luz Imágenes a todo color incluso con poca luz

Equipada con un sensor de imagen de alta sensibilidad, la cámara puede capturar imágenes en color incluso con poca luz, lo que permite cambiar al modo en blanco y negro más tarde.



Figure 5.4: Enhanced Security with AI. This image shows the app interface displaying notifications for detected persons and motion, alongside icons for baby monitoring, pet monitoring, and smart home surveillance.

Seguridad mejorada con AI Monitoriza a tus hijos y mascotas sin esfuerzo

Gracias a las diversas funciones con AI, la cámara envía alertas remotas en tiempo real cuando detecta eventos en los que participan niños o mascotas. El procesamiento AI se realiza localmente, no a través de la nube, lo que garantiza respuestas más rápidas y precisas, y una mayor privacidad.

 **Monitorización inteligente de bebés**
Detección de llanto del bebé | Valla virtual

 **Monitorización inteligente de mascotas**
Detección y rastreo de mascotas

 **Vigilancia de hogar inteligente**
Detección y seguimiento de personas
Detección de ruido fuerte

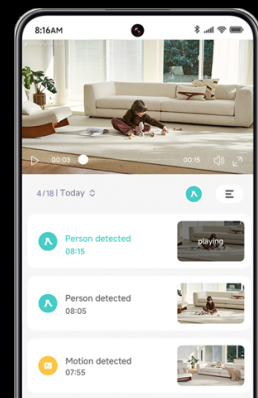


Figure 5.5: AI Detection Capabilities. This image illustrates the camera's ability to detect baby crying, capture pets playing, and track human movement, providing remote alerts.

5.4 Night Vision and HDR

The camera provides clear images even in low light or complete darkness, thanks to its infrared night vision and HDR capabilities.

Calibración HDR¹ Conserva los detalles en las zonas luminosas y oscuras

El modo de alto rango dinámico (HDR) ayuda a la cámara a manejar condiciones de iluminación complejas, conservando más detalles tanto en las zonas luminosas como en las oscuras para obtener imágenes más nítidas y equilibradas.

1. HDR es una función autoadaptable que no requiere una configuración independiente.



Figure 5.6: Infrared Night Vision. This image demonstrates the camera's 940nm infrared fill light, providing clear night vision up to 10 meters without visible red lights.

Visión nocturna con infrarrojos

Imágenes increíblemente nítidas incluso de noche

La luz de relleno infrarroja de 940 nm integrada mejora la visión nocturna, lo que permite obtener imágenes nítidas incluso en la oscuridad total.

940 nm

luz de relleno infrarroja

10 m¹

distancia de visión nocturna

1. La distancia de visión nocturna de 10 m se obtiene del fabricante. Consulta el producto real.
2. Las luces rojas que aparecen en la lente son meramente ilustrativas y no reflejan la posición real de las luces de relleno infrarrojas.
3. "Sin luces rojas visibles" indica el uso de una luz de relleno infrarroja de 940 nm, lo que garantiza un funcionamiento discreto sin interferencias de luz roja visible.



Figure 5.7: High Light Sensitivity. This image shows the camera's ability to capture full-color images even in low-light conditions, with the option to switch to black and white later.

Ultra alta definición 4K

Imágenes de alta calidad con refinamiento fotograma a fotograma

Con un sensor de nivel profesional de 8 MP, la cámara ofrece imágenes 4K de ultra alta definición con una claridad cristalina y detalles de gran nitidez.

8 MP

cámara
supernítida

f/1.6

lentes de gran
apertura

6P

lentes ópticas

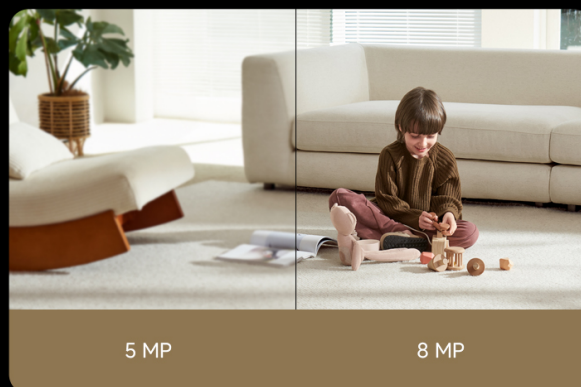


Figure 5.8: HDR Calibration. This image compares a scene without HDR and with HDR, demonstrating how HDR preserves details in both bright and dark areas for balanced images.

6. STORAGE OPTIONS

The XIAOMI Smart Camera C701 offers multiple storage solutions for your recordings.

- **MicroSD Card:** Supports microSD cards from 8 GB to 256 GB (Class 10 or higher, FAT32 format). Insert the card into the designated slot on the camera.
- **Cloud Storage:** Optional subscription-based cloud storage service from Xiaomi for secure off-site backup.
- **Network Attached Storage (NAS):** The camera supports NAS for local network storage.

Monitorización automática Tu guardián doméstico



Monitorización
panorámica



Monitorización
temporizada



Monitorización de punto
fijo para áreas específicas

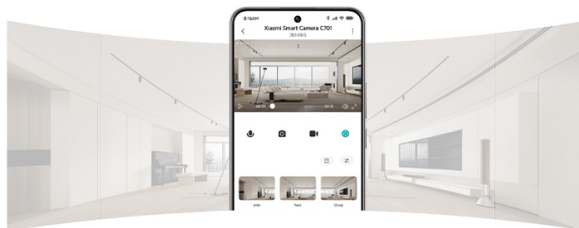


Figure 6.1: Storage Options. This image shows the camera with a microSD card being inserted, alongside icons representing cloud storage and network-attached storage.

7. PRIVACY FEATURES

Your privacy is paramount. The camera includes features to ensure your data is protected.

- **Physical Lens Shield:** Activate the physical lens shield from your smartphone to rotate the lens upwards into the device body, ensuring privacy when the camera is not in use. Activation schedules can be customized.
- **Local AI Processing:** AI functions are processed locally on the device, reducing reliance on cloud servers for faster, more secure performance.
- **Encrypted Transmission:** Data transmitted to the cloud is protected with multiple layers of encryption to ensure secure communication and prevent leaks.
- **Integrated MJA1 Security Chip:** Financial-level privacy protection against hacker attacks.

Wi-Fi 6 de doble banda Conexión perfecta para una mayor tranquilidad

El chip Wi-Fi 6 de doble banda proporciona un gran ancho de banda para reducir las interferencias de red y la tecnología OFDMA garantiza una latencia más baja, conexiones más estables y una experiencia general más fluida.

60%¹
Aumento de la velocidad en
comparación con Wi-Fi 4

2,4GHz/5GHz
Compatible con Wi-Fi
de doble banda

1. El aumento de velocidad del 60 % se basa en los datos del laboratorio.
El rendimiento real puede variar.

Wi-Fi 4 Wi-Fi 6

Figure 7.1: Four Layers of Privacy Protection. This image visually represents the camera's privacy features: attack protection (MJA1 chip), physical lens protection, local computation, and encrypted transmission.

8. MAINTENANCE

To ensure optimal performance and longevity of your XIAOMI Smart Camera C701, follow these maintenance guidelines:

- **Cleaning:** Gently wipe the camera lens and body with a soft, dry cloth. Avoid using harsh chemicals or abrasive materials that could scratch the lens or surface.

- **Placement:** Ensure the camera is placed in a stable location to prevent accidental falls. Avoid placing it near heat sources or in direct sunlight for extended periods.
- **Software Updates:** Regularly check the Xiaomi Home app for firmware updates. Keeping your camera's software up-to-date ensures you have the latest features and security enhancements.
- **Power Supply:** Use only the original power adapter and cable provided with the camera to prevent damage.

9. TROUBLESHOOTING

If you encounter issues with your XIAOMI Smart Camera C701, refer to the following common solutions:

Problem	Possible Cause	Solution
Camera offline	Poor Wi-Fi signal, incorrect Wi-Fi password, router issues.	Check Wi-Fi signal strength, ensure correct password, restart router, or reposition camera closer to router.
Cannot connect to app	Incorrect app version, camera not in pairing mode, network issues.	Ensure you have the latest Xiaomi Home app. Reset the camera to factory settings (refer to manual for button location) and try pairing again. Verify network stability.
Blurred image	Dirty lens, protective film still on lens, poor lighting.	Clean the lens gently with a soft cloth. Remove any protective film. Ensure adequate lighting or enable HDR/night vision.
No sound from two-way audio	Microphone/speaker muted in app, low volume, network delay.	Check app settings to ensure microphone and speaker are enabled and volume is up. Verify network connection.
SD card not recognized	Incorrect format, faulty card, improper insertion.	Ensure the microSD card is FAT32 formatted and Class 10 or higher. Reinsert the card. Try a different microSD card.

10. SPECIFICATIONS

Key technical specifications for the XIAOMI Smart Camera C701.

- **Model Number:** MJSXJ27CM
- **Resolution:** 4K Ultra HD (8MP sensor)
- **Pan/Tilt:** 360° horizontal, 109° vertical
- **Connectivity:** Dual-band Wi-Fi 6 (2.4GHz/5GHz)
- **Night Vision:** Infrared (940nm, up to 10m)
- **Audio:** Two-way communication, noise-cancelling microphone
- **Storage:** MicroSD card (8-256GB, FAT32, Class 10+), Cloud storage, NAS
- **AI Features:** Human detection/tracking, pet detection/tracking, baby crying detection
- **Special Features:** HDR, Physical lens shield, MJA1 security chip, Local AI processing, Encrypted transmission
- **Dimensions:** 7.9 x 7.9 x 11.9 cm
- **Weight:** 430 g
- **Power Input:** 5V, 2A (10W)

11. SAFETY INFORMATION

Please read and follow all safety instructions to prevent injury or damage to the device.

- Do not disassemble, repair, or modify the camera yourself.
- Avoid exposing the camera to extreme temperatures, humidity, or direct sunlight.
- Keep the camera away from water or other liquids.
- Ensure the power adapter is easily accessible and unplugged during cleaning or if not in use for extended periods.
- This camera is designed for indoor use only.

12. WARRANTY AND SUPPORT

For warranty information, technical support, or service inquiries, please refer to the official XIAOMI website or contact your local retailer. Keep your purchase receipt as proof of purchase for warranty claims.

Official XIAOMI Website: www.mi.com