

Manuals+

[Q & A](#) | [Deep Search](#) | [Upload](#)

Manuals.plus /

› [JOYING](#) /

› Joying 11.6 Inch Double Din Car Stereo User Manual

JOYING JY-UTD11N8

Joying 11.6 Inch Double Din Car Stereo User Manual

Model: JY-UTD11N8

Brand: JOYING

1. INTRODUCTION

This manual provides detailed instructions for the installation, operation, and maintenance of your Joying 11.6 Inch Double Din Car Stereo. This advanced head unit features Android 13, Apple CarPlay, Android Auto, a powerful 8GB RAM + 128GB ROM configuration, and a range of connectivity options including Bluetooth, Wi-Fi, and 4G. Please read this manual thoroughly before using the device to ensure proper functionality and safety.

2. PRODUCT OVERVIEW AND COMPONENTS

The Joying 11.6 Inch Double Din Car Stereo is designed to enhance your in-car entertainment and navigation experience. It features a large IPS screen with 1920x1080 resolution, a Qualcomm Snapdragon 6125 Octa Core 2.0GHz processor, and a robust audio system.

2.1 Package Contents

Upon unpacking, verify that all items listed below are present and in good condition:

- 11.6" Radio Unit (x1)
- Double Din Cage (x1)
- Left & Right Bracket (x1 pair)
- Reinforced Shims (x1 set)
- Plastic Trim Out (x1)
- Installation Manual (x1)
- WiFi Antenna (x1)
- GPS Antenna (x1)
- 4G Antenna (x2)
- External Mic (x1)
- USB Cable (x2)
- AR Cable (x1)
- Screen Ribbon Cable (x1)
- ISO Cable (x1)

- User Manual (x1)



Figure 2.1: Dimensions of the head unit and a visual representation of all included package contents.

3. SETUP AND INSTALLATION

Proper installation is crucial for the optimal performance of your car stereo. It is recommended that installation be performed by a qualified professional.

3.1 General Installation Notes

- For installation, you may require an installation frame kit with an inner size of 178 x 102mm, a special ISO harness, an amplifier adapter, or a CANbus decoder, depending on your vehicle's specific requirements.
- This unit does not support factory car GPS antennas, factory backup rear cameras, factory Bluetooth, factory USB ports, or factory microphones. Only JOYING accessories are supported for these functions.
- Refer to the dedicated Installation Manual included in the package for detailed wiring diagrams and step-by-step instructions.

3.2 Installation Structure and Cooling

The unit features an upgraded installation structure and cooling system for enhanced durability and performance.

Cooling Upgraded

Dual heat sink design: Offers superior heat dissipation, improved temperature control, and enhanced performance stability.

Set warning value for volume or CPU temp:
When the CPU temperature or radio's volume rises and exceeds the warning value, the fan will be turned on automatically for cooling to avoid overheating.


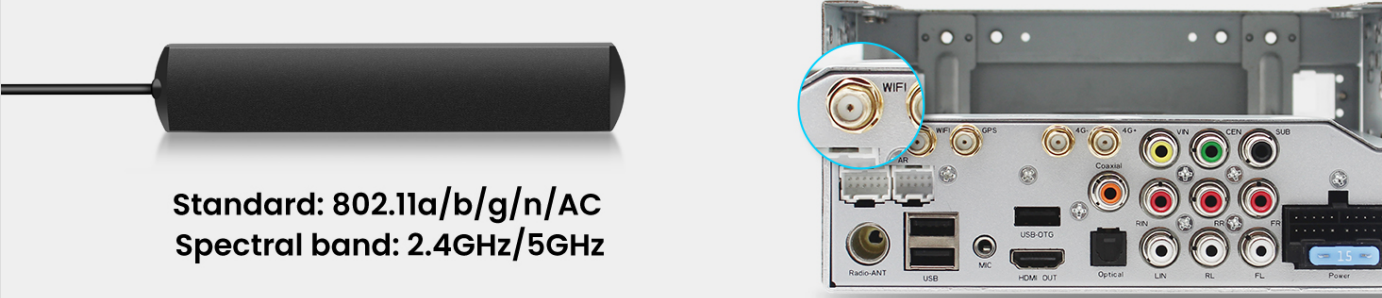


Figure 3.1: The fixing position of the left and right brackets can be extended or telescoped to achieve the best fixing position according to your car's center console, adapting to a wider range of vehicles. Note: If your car is a Hyundai or Kia brand, please contact JOYING for a different bracket.

WiFi Signal Upgraded

With an independent WiFi antenna, ensure stable signal quality and provide fast & smooth internet access.



Standard: 802.11a/b/g/n/AC
Spectral band: 2.4GHz/5GHz

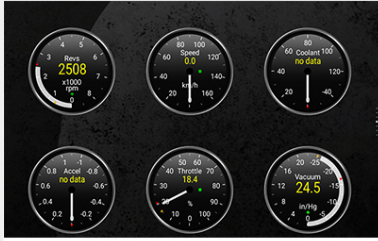
Figure 3.2: The unit features a dual heat sink design for superior heat dissipation, improved temperature control, and enhanced performance stability. You can set a warning value for volume or CPU temperature; when the CPU temperature or radio's volume rises and exceeds the warning value, the fan will be turned on automatically for cooling to avoid overheating.

3.3 Antenna Connections

Ensure all antennas are securely connected for optimal signal reception.

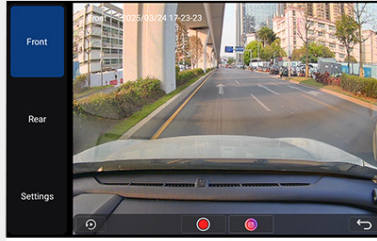
Optional Accessories

(NOT included in the package)



OBD2 (ASIN: B076CD78HT)

Connected via Bluetooth to retrieve real-time data and trouble codes from your vehicle computer.



AR Front Camera (ASIN: B0CBX4N6V8)

Record the front road in the background automatically while driving.



AR Rear Camera (ASIN: B0CBX39S8M)

Switch to the reverse display automatically when reversing the car.



Figure 3.3: The independent WiFi antenna ensures stable signal quality and provides fast and smooth internet access. It supports 802.11 a/b/g/n/AC standards with 2.4GHz/5GHz spectral bands.

4. OPERATING INSTRUCTIONS

This section details the various functions and features of your Joying car stereo.

4.1 Initial Startup and User Interface

The unit features a fast boot time. Once the car key is turned, it will start up and enter the user interface in approximately 2 seconds. The first boot-up may take 30-40 seconds.



Figure 4.1: The main user interface of the Joying 11.6 Inch Double Din Car Stereo, displaying navigation, media, and various application shortcuts.



11.6" Double Din Car Radio

Qualcomm
Snapdragon 6125

Octa Core
2.0GHz

IPS Screen
1920×1080P



LHD User Interface



RHD User Interface

Figure 4.2: The unit runs on Android 13 and offers both Left-Hand Drive (LHD) and Right-Hand Drive (RHD) user interface options for user convenience.

4.2 Audio Features

Experience high-quality sound with advanced audio processing capabilities.

- **Optical Fiber and Coaxial Digital Output:** If your external amplifier has Optical Fiber or Coaxial Digital Input, this unit provides a direct digital output for ultimate sound quality.
- **DSP Chip and Equalizer:** Equipped with a TDA7851 DSP Chip and a 48-Band Graphic Equalizer for precise sound customization.
- **Max Output Power:** Delivers 4x50W maximum output power.
- **Aftermarket Amplifier Support:** Features 4*Audio Outputs and 1*SUB Output for connecting aftermarket amplifiers.

High-quality Sound Enjoyment

TDA7851

DSP Chip

48-Band

Graphic Equalizer

4×50W

Max Output Power



Support Aftermarket Amplifier



4 *Audio Outputs
1* SUB Output



Fiber Optical
Output



SPDIF Coaxial
Output



Center Channel
Output

Figure 4.3: Overview of the audio features, highlighting the TDA7851 DSP Chip, 48-Band Graphic Equalizer, 4x50W Max Output Power, and support for aftermarket amplifiers via Fiber Optical, SPDIF Coaxial, and Center Channel Outputs.

4.3 Connectivity and Navigation

Stay connected and navigate with ease using the integrated features.

- **Built-in 4G Module:** Insert a SIM card for internet access. Supported types include FDD-LTE: B2/B4/B5/B7/B12/B13/B14/B17/B25/B26/B38/B66/B71 and TDD-LTE: B41. Note: This module does not support phone calls or SMS.
- **GPS Navigation:** Equipped with precise GPS engines and an included GPS antenna for accurate and real-time navigation. Supports offline maps where data can be downloaded and saved. You can also synchronize mobile phone map data via Apple CarPlay or Android Auto.
- **Apple CarPlay & Android Auto:** Connect your mobile phone via USB cable or Bluetooth to access phone apps on the larger screen, facilitating navigation, calls, and music playback.

Installation Structure Upgraded



The fixing position of the left & right brackets can be extended or telescoped to achieve the best fixing position according to your car center console, adapting to a wider range of vehicles.

Note: If your car is a **Hyundai or Kia brand**, pls contact us to get a different bracket.

Figure 4.4: The unit supports both Apple CarPlay and Android Auto, allowing seamless integration with your smartphone for navigation, communication, and entertainment.

4.4 Display Features

Utilize the advanced display capabilities for enhanced user experience.

- **Split-screen Multitasking:** Run two applications simultaneously on the screen. Tap the recent apps icon, find the app you want to run in split-screen, click its icon to bring up the split-screen button, and tap it. The first app will display on the left side, then choose the second app from recent apps.
- **HDMI Output:** A full digital image and sound-sending interface that can send uncompressed audio and video signals. Supports projection screen display for passengers in the headrest and on-screen display with 1080P clear picture and zero delays. Note: The HDMI cable is not included.

Split-screen Multitasking



1

Tap the recent apps icon.



2

Find the app you want to run the split screen function, click the app icon to bring up the split-screen button, and tap it.



3

The first app you have selected will display on the left side, then choose the second app in recent apps.

Figure 4.5: The split-screen multitasking feature allows simultaneous use of two applications, such as navigation and video playback.

HDMI Output

HDMI is a full digital image and sound-sending interface that can send uncompressed audio and video signals, audio and video can be output synchronously, no need to adjust manually.



Projection Screen Display:
Support to play movies for passengers in the headrest, and navigate for drivers on the main screen. Everyone can enjoy it.



On-screen Display:
Displays the same 1080P clear picture, zero delays without stuttering.



Note: The HDMI cable is not included.

Figure 4.6: The HDMI output allows for external display connections, providing entertainment for rear passengers or mirroring the main screen.

4.5 Personalization and Other Features

Customize your stereo and utilize additional functionalities.

- **Personalized Settings:** Customize the car boot logo, choose from various wallpapers, change button colors, and adjust screen brightness.
- **Steering Wheel Control (SWC):** Supports steering wheel controls for easy song switching, radio channel changes, and volume adjustment, contributing to a safer driving experience. Note: Cars with a CAN system may require an extra CANbus cable.
- **Other Features:** Includes Fast Boot, GPS Navigation, AM/FM Radio, Hands-free Call, Picture-in-Picture, 3 USB Ports, Micro SD Card Slot, and 4G SIM Card Slot.

Personalized Setting

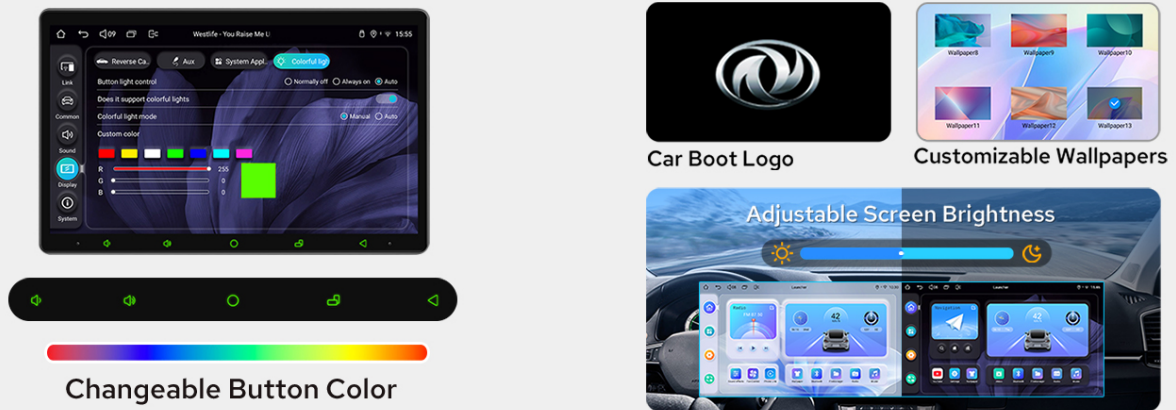


Figure 4.7: Personalization options allow users to tailor the stereo's appearance and settings to their preferences.

Other Features

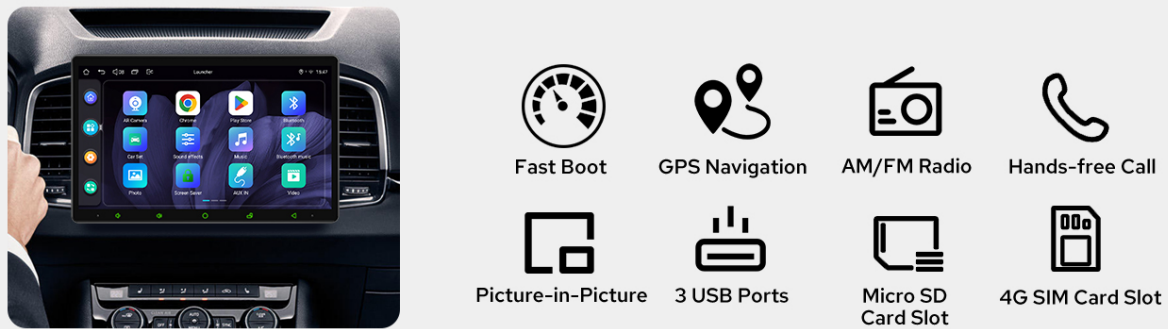


Figure 4.8: Steering wheel control integration provides convenient and safe operation of the stereo while driving.

Built-in Carplay & Android Auto

Connect your mobile phone with the car radio via USB cable or Bluetooth to share the phone's apps on a bigger screen, it is an easier way to get access to navigation, make phone calls, and listen to music.

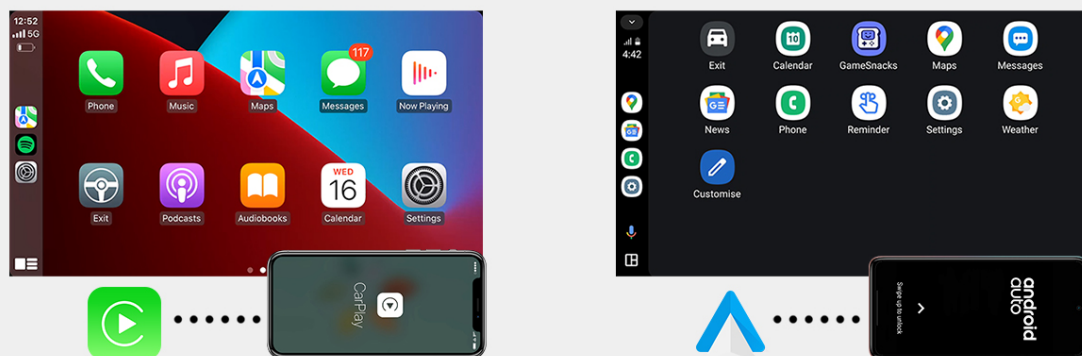


Figure 4.9: A summary of additional features available on the Joying car stereo.

To ensure the longevity and optimal performance of your Joying car stereo, follow these general maintenance guidelines:

- **Cleaning the Screen:** Use a soft, lint-free cloth to gently wipe the screen. For stubborn smudges, slightly dampen the cloth with water or a screen-cleaning solution. Avoid harsh chemicals or abrasive materials.
- **General Cleaning:** Keep the unit and surrounding area free from dust and debris. Use a soft brush or compressed air to clean vents and ports.
- **Temperature Control:** Avoid exposing the unit to extreme temperatures. The built-in cooling system helps manage internal temperatures, but prolonged exposure to direct sunlight or extreme cold can affect performance.
- **Software Updates:** Periodically check the official JOYING website or contact support for available software updates to ensure your unit has the latest features and bug fixes.

6. TROUBLESHOOTING

This section addresses common issues you might encounter and provides solutions.

- **Slow Initial Boot-up:** The first boot-up after installation or a full power cycle may take approximately 30-40 seconds. Subsequent startups (from standby) will be much faster, typically around 2 seconds. This is normal operation.
- **No GPS Signal / Poor Reception:** Ensure the GPS antenna is properly installed and has a clear line of sight to the sky. Verify that the antenna cable is not damaged or kinked. Remember, the unit does not support factory car GPS antennas.
- **Bluetooth/USB/Microphone Not Working:** This unit does not support factory car Bluetooth, USB, or microphone systems. Ensure you are using the included external microphone and USB cables, and that they are properly connected.
- **Rear Camera Not Displaying:** The unit does not support factory backup rear cameras. Ensure you are using a compatible aftermarket camera and that it is correctly wired to the unit's video input.
- **Steering Wheel Controls Not Functioning:** Verify that the SWC wires are correctly connected. If your car has a CAN system, an additional CANbus cable may be required for SWC functionality.
- **Unit Overheating:** The unit has a dual heat sink design and a fan. If you notice excessive heat, ensure proper ventilation around the unit. Check the fan settings in the system menu; the fan can be set to automatically turn on if CPU temperature or volume exceeds a set warning value.

7. SPECIFICATIONS

Detailed technical specifications for the Joying 11.6 Inch Double Din Car Stereo.

Feature	Specification
Product Dimensions	5.91 x 7.99 x 4.72 inches
Item Weight	2.65 pounds
Model Number	JY-UTD11N8
Visible Screen Diagonal	12" / 30 cm
Connectivity Technology	Bluetooth, Ethernet, HDMI, USB, Wi-Fi
Controller Type	Android
Special Features	Android Auto, Apple CarPlay, DSP, Equalizer, RDS
Compatible Devices	Amplifier, Camera, Speaker
Total HDMI Ports	1

Feature	Specification
Connector Type	Coaxial, Optical
Audio Output Mode	Stereo
Surround Sound Channel Configuration	5.1
Video Encoding Support	H264/H265/MP4/AVI/MKV/FLV

8. OPTIONAL ACCESSORIES

Enhance the functionality of your Joying car stereo with these optional accessories (not included in the standard package):

- **OBD2 Scanner (ASIN: B076CD78HT):** Connects via Bluetooth to retrieve real-time data and trouble codes from your vehicle's computer.
- **AR Front Camera (ASIN: B0CBX4N6V8):** Records the front road in the background automatically while driving.
- **AR Rear Camera (ASIN: B0CBX39S8M):** Switches to the reverse display automatically when reversing the car.



Figure 8.1: Optional accessories that can be purchased separately to expand the capabilities of your car stereo.

9. WARRANTY AND SUPPORT

For information regarding product warranty, please refer to the warranty card included with your purchase or visit the official JOYING website. Warranty terms and conditions may vary.

For technical support, troubleshooting assistance, or inquiries about compatible accessories, please contact JOYING customer service through their official channels. Keep your purchase receipt and product model number (JY-UTD11N8) ready when contacting support.