

[Manuals.plus](#) /

› [Dbasne](#) /

› [Dbasne MD058A AI Translation Earbuds User Manual](#)

Dbasne MD058A

Dbasne MD058A AI Translation Earbuds User Manual

Model: MD058A

INTRODUCTION

The Dbasne MD058A AI Translation Earbuds are designed to facilitate communication across language barriers, provide high-definition audio for calls, and deliver quality music playback. These earbuds feature real-time translation capabilities for 164 languages, powered by Bluetooth 5.4 technology and an accompanying mobile application. They are suitable for various scenarios including international travel, business meetings, and language learning.



Image: Dbasne MD058A AI Translation Earbuds in their charging case, displaying battery levels.

WHAT'S IN THE BOX

Verify that all items are present in the package:

- 2 x MD058A Language Translator Earbuds
- 1 x Charging Box
- 3 x Pairs of Earplugs (S/M/L)
- 1 x User Manual
- 1 x Translation Manual (with built-in authorization QR)
- 1 x USB-C Charging Cable



Image: Contents of the Dbasne MD058A AI Translation Earbuds package, including earbuds, charging case, USB-C cable, and manuals.

SETUP

1. Charging the Earbuds and Case

Before first use, fully charge the earbuds and the charging case. Connect the provided USB-C cable to the charging case and a power source. The LED display on the case will show the battery percentage. A full charge takes approximately 90 minutes for the case. The earbuds provide up to 5 hours of use on a single charge, with the charging case extending total runtime to 25 hours.

High Efficiency Battery & Type C Recharging



1 Hrs
Fast Charged



5 Hrs
Single Charge



25 Hrs
With Charging Case



The illustration shows the black charging case with its lid open, revealing two earbuds. The case has a digital display showing '100'. Below the case, there are two battery icons: one for the case showing '100' and one for the earbuds showing '100'. The background is a light blue gradient with wavy lines and a large sphere.

Image: Illustration of charging times and battery life for the earbuds and charging case.

2. App Installation

The Dbasne MD058A earbuds require the "EarDance" application for full functionality, especially for translation features. You can install the app using one of the following methods:

1. **Method 1: Scan QR Code**

Scan the QR code provided in the instruction manual or on the product packaging to download and install the "EarDance" app.

2. **Method 2: App Store Search**

Search for "EarDance" in your device's app store (Google Play Store for Android or Apple App Store for iOS), then download and install the application.

14.2mm Dynamic Drivers

The 14.2mm dynamic driver optimizes vocal and performance while maintaining the original strong bass, retaining true and rich details of the original sound



Image: Visual guide for downloading the "EarDance" app via QR code or app store search.

Direct download link: [EarDance App](#)

3. Bluetooth Pairing

To connect the earbuds to your device:

1. Open the charging case. The earbuds will automatically enter pairing mode.
2. On your smartphone or tablet, navigate to the Bluetooth settings.
3. Search for nearby Bluetooth devices and select "MD058A" from the list to complete the connection.
4. Once connected, launch the "EarDance" app. The app will indicate that the headphones are successfully connected.

Ergonomic design

Secure Fit With ergonomic design based on 10,000+ global human ear data for guaranteed comfort



Image: Visual steps for Bluetooth pairing and app connection confirmation.

4. App Binding

After successfully connecting the earbuds via Bluetooth, you need to bind them within the EarDance app:

1. Open the "EarDance" app and navigate to the "My" page.

2. Click on "Bind Device".
3. You can bind the device by either entering the authorization code manually in the dialog box or by scanning the authorization QR code found in the Translation Manual.



Image: Visual guide for binding the earbuds in the EarDance app using an authorization code or QR code.

OPERATING INSTRUCTIONS

Touch Controls

The earbuds feature touch-sensitive panels for various functions:

- **Play/Pause:** Double-tap (x2)
- **Switch Song:** Tap and hold for 2 seconds (2S)
- **Adjust Volume:** Single-tap (x1)
- **Answer/End Call:** Double-tap (x2)
- **Reject Call:** Tap and hold for 2 seconds (2S)
- **Activate Voice Assistant (Siri/Google Assistant):** Triple-tap (x3)



Image: Diagram illustrating the touch control functions on the earbuds.

Translation Modes (via EarDance App)

The EarDance app provides six distinct translation modes:

- **Free Talk Mode:** This mode automatically detects and translates speech in real-time. Both parties wear one earbud each to facilitate natural, free-flowing communication. Supports 164 languages.

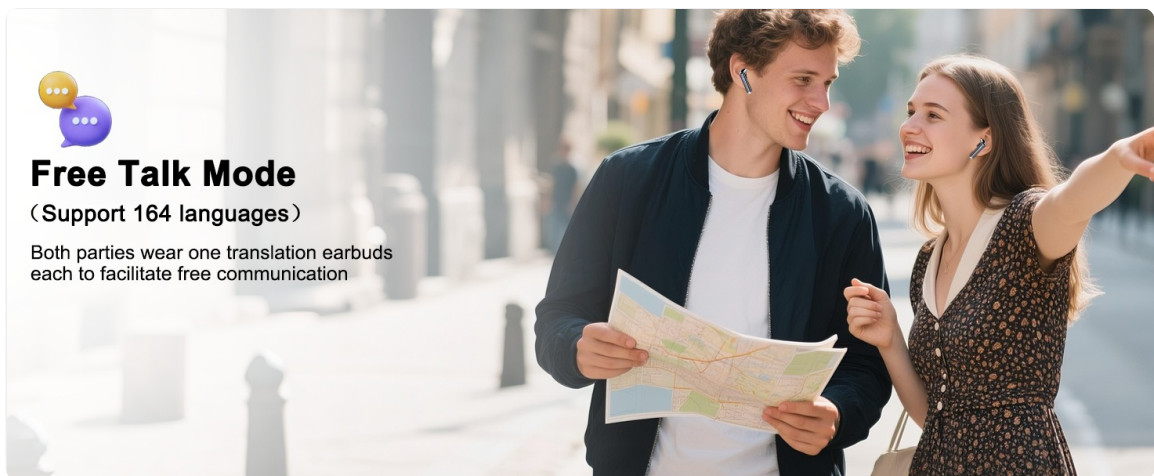
MD058A AI Translation Earbuds

- 164 language translations
- 0.5-1s low latency
- up to 98% accuracy
- AI chat
- ENC noise reduction
- HiFi sound
- 5 translation modes
- 25H battery life



Image: Illustration of two people using Free Talk Mode with one earbud each.

- **Headset+Phone Mode:** One user wears an earbud, while the other person speaks into the smartphone. The app translates and plays the speech through the earbud and vice-versa, enabling quick two-way interaction. Supports 164 languages.



Free Talk Mode

(Support 164 languages)

Both parties wear one translation earbuds each to facilitate free communication

Image: A doctor and patient using Headset+Phone Mode for translation.

- **Translation Machine Mode:** Functions like a traditional handheld translator. Tap the mobile translation button in the app to initiate translation, with audio output through your speaker. Supports 164 languages.



Headphone+Phone Mode

(Support 164 languages)

One person single/double taps on the earbuds and the other taps on the phone to achieve a real-time translated conversation

Image: A parent and child using Translation Machine Mode with a tablet.

- **Camera Mode:** Translates captured text from images. Point your phone's camera at text (e.g., signs, menus, books) and the app will provide a translation.

How to download the "Ear Dance" APP

Method 1  Scan the QR code on the instruction manual to download and install the "Ear Dance" app	Method 2  Search for the keyword "Ear Dance" in major app stores, find the application, and download and install it
--	--

How to connect and pair the translation headphones



Step1  Open the Bluetooth page in your phone settings and search for nearby Bluetooth devices. Select "MD058A" in your phone to complete the connection	Step2  Launch the "Ear Dance" App, It will show that the headphones are successfully connected
---	--

Image: Examples of Camera Mode translating text from books, menus, and road signs.

- **Voice Memo Mode:** Converts spoken language into text. This mode supports real-time voice recording and automatic language recognition, converting speech to text output. The maximum recording time is 30 minutes. Supports 164 languages.

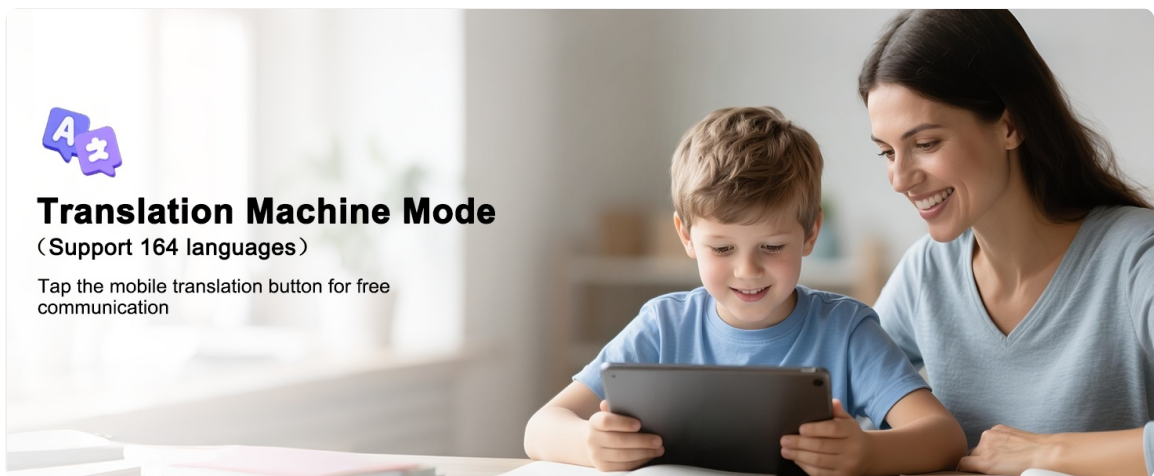


Image: A student using Voice Memo Mode with earbuds and a laptop.

- **Audio & Video Translation Mode:** Enables live translation of both audio and video content, facilitating understanding in multimedia contexts.

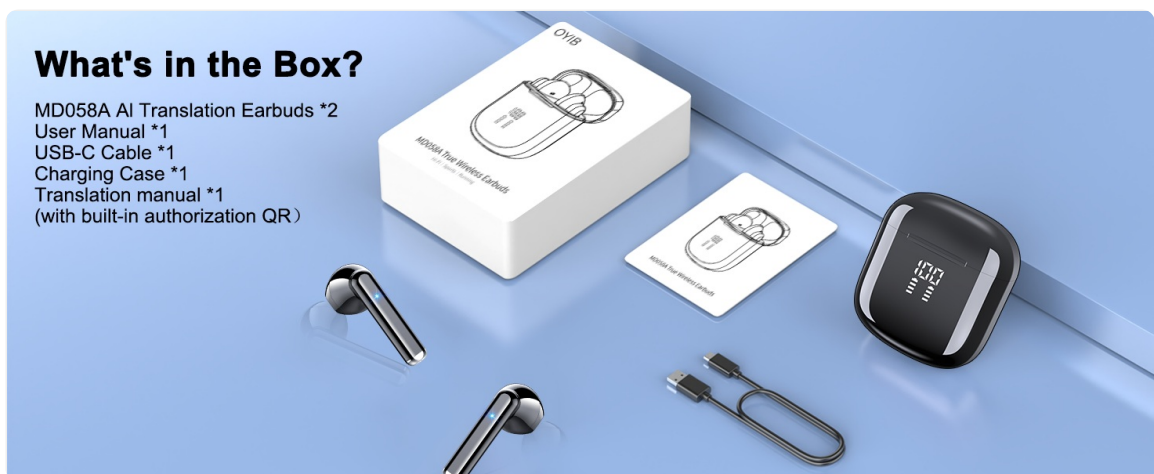


Image: Depiction of Audio and Video Translation Mode in use during a video conference.

AI Assistant Support (AI Chat Mode)

Activate the built-in AI assistant through the EarDance app for voice-driven assistance. The AI engine processes queries in real-time, providing responses in under 5 seconds. This feature supports 10 languages and can assist with tasks, learning, and problem-solving.



Voice Notes

(Support 164 languages)

Real-time voice recording, automatic language recognition and conversion to text output (Note: Text content can be edited and the maximum recording time is 30 minutes)

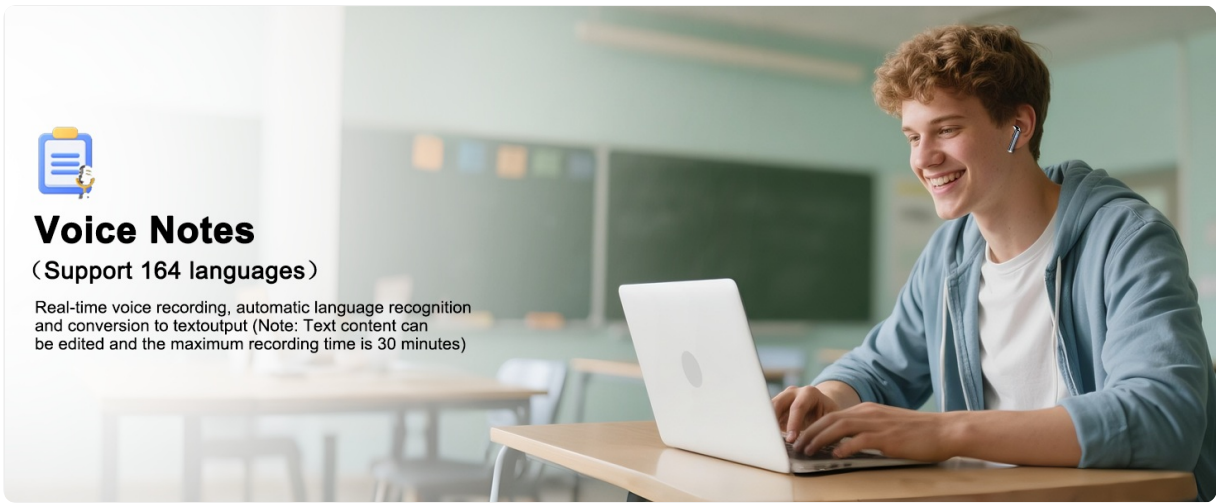


Image: Screenshots of the AI Chat Mode interface within the EarDance app.

MAINTENANCE

Cleaning

Regularly clean your earbuds and charging case to ensure optimal performance and hygiene. Use a soft, dry, lint-free cloth. Avoid using abrasive materials, solvents, or aerosol sprays. For ear tips, remove them and clean with a mild soap solution, rinse thoroughly, and ensure they are completely dry before reattaching.

Water Resistance

The earbuds are rated IPX7 waterproof, meaning they are resistant to sweat and splashes. They are not designed for swimming or prolonged submersion in water. Ensure the charging port is dry before charging to prevent damage.



Image: Illustration highlighting the IPX7 waterproof rating and Bluetooth 5.4 connectivity.

Storage

Store the earbuds in their charging case when not in use to protect them and keep them charged. Avoid exposing them to extreme temperatures, humidity, or direct sunlight.

TROUBLESHOOTING

If you encounter issues with your Dbasne MD058A AI Translation Earbuds, refer to the following common solutions:

- **Earbuds not connecting/pairing:**

- Ensure the earbuds are charged.
 - Make sure Bluetooth is enabled on your device.
 - Confirm the "MD058A" device is selected in your Bluetooth settings.
 - Try resetting the earbuds (refer to the app or manufacturer's website for specific reset instructions).
 - Ensure the EarDance app is installed and updated.
- **Translation not working or inaccurate:**
 - Verify that the earbuds are properly connected and bound to the EarDance app.
 - Check your internet connection, as real-time translation requires online access.
 - Ensure the correct source and target languages are selected in the app.
 - Speak clearly and at a moderate pace.
 - For "Translation Machine Mode," remember to tap the button to initiate translation, as it does not automatically translate without input.
- **Poor audio quality or noise:**
 - Ensure earbuds are clean and free of debris.
 - Adjust earbud placement for a secure fit.
 - Check for environmental interference. The earbuds feature ENC noise cancellation, but extreme noise may still affect clarity.
- **App issues:**
 - Ensure the EarDance app is updated to the latest version.
 - Restart the app or your smartphone.
 - Clear the app's cache or reinstall it if problems persist.

For further assistance, please contact Dbasne customer support.

SPECIFICATIONS

Model Name	MD058A
Connectivity Technology	Wireless (Bluetooth)
Bluetooth Version	5.4
Bluetooth Range	Up to 15 meters
Battery Life (Earbuds)	Up to 5 hours per charge
Total Battery Life (with Case)	Up to 25 hours
Charging Time (Case)	Approximately 90 minutes
Charging Port	USB-C
Water Resistance Level	IPX7 (Sweat and splash resistant)
Noise Control	Environmental Noise Cancellation (ENC)
Audio Driver Type	14.2mm Dynamic Driver
Compatible Devices	Smartphones, Tablets, Laptops, Desktops, Smart Home Devices

Item Weight	0.08 Kilograms (2.89 ounces)
App Support	EarDance App (iOS & Android)
Supported Languages	164 (for translation), 10 (for AI Chat)

WARRANTY AND SUPPORT

For information regarding product warranty, returns, or technical support, please refer to the warranty card included in your product packaging or visit the official Dbasne website. You can also find support resources within the "EarDance" application under the "Help and Feedback" section.

Manufacturer: Dbasne