

Huffy 76578

Huffy 76578 Champagne Gold 26-inch Cruiser Bicycle User Manual

Model: 76578

1. INTRODUCTION

Welcome to the user manual for your new Huffy 76578 Champagne Gold 26-inch Cruiser Bicycle. This manual provides essential information for the safe assembly, operation, maintenance, and care of your bicycle. Please read it thoroughly before your first ride and keep it for future reference. Proper assembly and maintenance are crucial for your safety and the longevity of your bicycle.



Image 1.1: The Huffy 76578 Champagne Gold 26-inch Cruiser Bicycle.

2. SAFETY INFORMATION

Your safety is paramount. Always wear a helmet when riding your bicycle. Ensure all components are correctly assembled and securely fastened before each use. Regularly inspect your bicycle for any signs of wear or damage.

- **Helmet Use:** Always wear a properly fitted helmet that meets safety standards.
- **Pre-Ride Check:** Before each ride, check tire pressure, brake function, handlebar and seat tightness, and ensure all quick releases are secure.
- **Visibility:** Use lights and reflectors, especially when riding in low-light conditions. Wear bright clothing.
- **Traffic Laws:** Obey all local traffic laws and regulations.
- **Rider Age/Height:** This bicycle is designed for ages 13 and up, with a minimum rider height of 5 feet.

3. SETUP AND ASSEMBLY

Your Huffy 76578 bicycle arrives semi-assembled with all necessary tools for completion. Follow these steps carefully for proper setup.

3.1. Handlebar Adjustment

Adjust the handlebars to a comfortable height and angle for an upright riding position. Ensure they are securely tightened after adjustment.

Your browser does not support the video tag.

Video 3.1: This video demonstrates the features of the Huffy Panama Jack Beach Cruiser, including the cup holder, rear rack, and handlebar basket. It provides a visual overview of the bicycle's design and accessories.

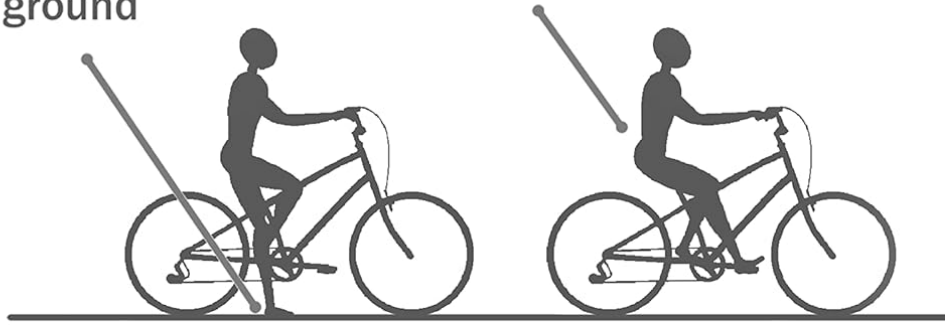
3.2. Seat Adjustment

The seat features an alloy quick release for easy height adjustment. Adjust the seat so your feet can comfortably touch the ground when stopped, thanks to the Perfect Fit frame design.

PERFECT FIT FRAMES

Lower frame design
so feet firmly touch
the ground

Seat is positioned for
an easy, enjoyable ride

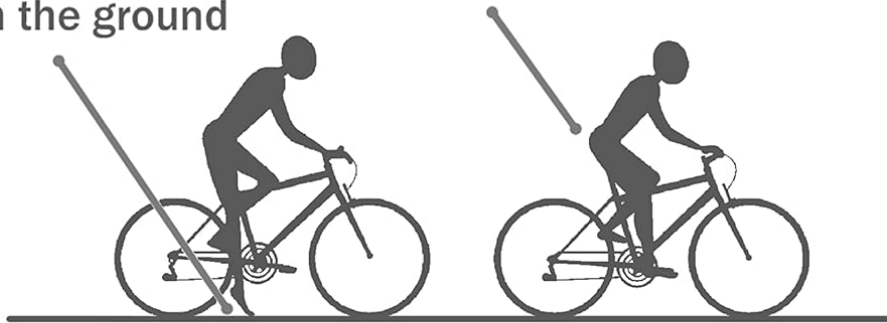


VS

TRADITIONAL FRAMES

Higher frame makes
it hard for feet to
touch the ground

Seat angle creates an
uncomfortable back arch



HUFFY
WE MAKE FUN[®]

Image 3.2: Diagram illustrating the ergonomic benefits of the Perfect Fit frame compared to traditional bicycle frames, allowing for a more upright posture and easier foot placement on the ground.

3.3. Pedal Installation

Attach the pedals to the crank arms. Ensure the left pedal (marked 'L') is threaded counter-clockwise and the right pedal (marked 'R') is threaded clockwise. Tighten securely.

3.4. Accessory Attachment

Your bicycle includes a wicker basket, beverage holder, and rear rack. Attach these accessories as desired, ensuring they are firmly secured and do not interfere with steering or braking.



Image 3.3: Close-up view of the handlebars, showing the attached wicker basket and beverage holder, designed for convenience during rides.



Image 3.4: Detail of the bicycle frame featuring a built-in bottle opener, a convenient addition for leisure activities.



Image 3.5: The sturdy rear rack, providing additional carrying capacity for personal items.

4. OPERATING YOUR BICYCLE

The Huffy 76578 is a single-speed cruiser bicycle designed for comfortable and relaxed riding.

- **Starting:** Mount the bicycle, place your feet on the pedals, and push off.
- **Braking:** This bicycle features a rear coaster brake. To engage the brake, pedal backward firmly.
- **Steering:** Use the handlebars to steer. Maintain a relaxed grip and look where you want to go.

5. MAINTENANCE

Regular maintenance ensures optimal performance and safety of your bicycle.

- **Tire Pressure:** Check tire pressure before each ride. Maintain the recommended PSI (pounds per square inch) indicated on the tire sidewall.
- **Chain Lubrication:** Lubricate the chain regularly, especially after riding in wet conditions, to prevent rust and ensure smooth pedaling.
- **Cleaning:** Clean your bicycle with mild soap and water. Avoid high-pressure washers, which can damage bearings.
- **Fasteners:** Periodically check all nuts, bolts, and quick releases for tightness.
- **Storage:** Store your bicycle in a dry, covered area to protect it from the elements.

6. TROUBLESHOOTING

Here are solutions to common issues you might encounter:

- **Loose Handlebars/Seat:** If handlebars or seat feel loose, re-tighten the stem bolt or quick release lever as shown in the setup section.
- **Squeaky Brakes:** Clean the brake pads and rim surface. If squeaking persists, consult a bicycle mechanic.
- **Flat Tire:** Inspect the tire for punctures. Repair or replace the inner tube as needed. Ensure the tire is properly seated on the rim before inflating.
- **Chain Slipping:** This may indicate a worn chain or sprocket. Regular lubrication can extend component life. If the issue persists, professional inspection is recommended.

7. SPECIFICATIONS

Feature	Specification
Bike Type	Cruiser Bike
Age Range	Adult (13 years and up)
Number of Speeds	1
Color	Champagne Gold
Wheel Size	26 Inches
Frame Material	Aluminum
Suspension Type	Rigid
Special Features	Basket, Lightweight, Rear Rack, Beverage Holder, Wicker Bottle Opener, Dual Spring Seat, Adjustable Handlebar, Alloy Quick Release
Item Weight	44 Pounds
Brake Style	Coaster
Minimum User Height	60 Inches
UPC	028914765785
Assembly Required	Yes




8. WARRANTY AND SUPPORT


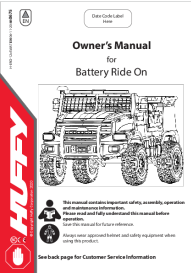

Your Huffy 76578 Champagne Gold 26-inch Cruiser Bicycle comes with a Limited 10-Year Frame Warranty. For detailed warranty information, please refer to the owner's manual included with your purchase or visit the official Huffy website. For any support needs, questions, or to order replacement parts, please contact Huffy customer service.

Manufacturer: The Huffy Bicycle Company

Website: [Visit the Huffy Store](#)

Related Documents - 76578

	<p>Manuale del Proprietario Huffy E-Bike 36 Volt</p> <p>Questo manuale del proprietario Huffy fornisce istruzioni essenziali per il montaggio, l'uso sicuro e la manutenzione della tua e-bike Huffy da 36 volt. Include informazioni sulla sicurezza, componenti, risoluzione dei problemi e garanzia.</p>
	<p>Huffy Battery Ride On Owner's Manual: Safety, Assembly, and Operation Guide</p> <p>Comprehensive owner's manual for the Huffy Battery Ride On, covering essential safety guidelines, assembly instructions, operation procedures, and maintenance tips for safe and enjoyable use.</p>
	<p>Huffy 36-Volt e-Bike Owner's Manual</p> <p>Comprehensive owner's manual for the Huffy 36-volt e-Bike, detailing safe assembly, operation, maintenance, and troubleshooting. Includes information for models like KD58C-LCD and contact details for Huffy customer support.</p>

	<p>Huffy 36-volt e-Bike Owner's Manual</p> <p>Comprehensive owner's manual for the Huffy 36-volt e-Bike, covering safety, assembly, operation, maintenance, and troubleshooting. Includes detailed instructions and important warnings for safe and proper use of the electric bicycle.</p>
	<p>Huffy Battery Ride-On Owner's Manual</p> <p>Comprehensive owner's manual for Huffy battery-powered ride-on vehicles, covering safety, assembly, operation, maintenance, and troubleshooting.</p>
	<p>Huffy 16" Slider Owner's Manual</p> <p>Comprehensive owner's manual for the Huffy 16" Slider, covering safety, assembly, operation, and maintenance instructions.</p>