



Manuals.plus /

› iHeylinkit /

› iHeylinkit 2-in-1 Wireless CarPlay & Android Auto Adapter User Manual

iHeylinkit M4

iHeylinkit 2-in-1 Wireless CarPlay & Android Auto Adapter User Manual

Model: M4

INTRODUCTION

The iHeylinkit 2-in-1 Wireless CarPlay & Android Auto Adapter is designed to seamlessly convert your car's wired CarPlay or Android Auto system into a wireless experience. This compact device eliminates the need for cables, allowing you to enjoy navigation, music, calls, messaging, and voice commands directly from your car's display with enhanced convenience.

Equipped with the latest smart IC chip and 5GHz high-speed WiFi + Bluetooth dual-channel technology, it ensures a zero-delay, stable connection comparable to wired systems. This manual provides detailed instructions for setup, operation, and troubleshooting to help you maximize your product's potential.

PACKAGE CONTENTS

- iHeylinkit 2-in-1 Wireless CarPlay & Android Auto Adapter (Model M4)
- USB-A to USB-C Cable
- USB-C to USB-C Cable
- User Manual



Image: The iHeylinkit adapter with its included USB-A to USB-C and USB-C to USB-C cables.

SETUP GUIDE

1. Connect the Adapter to Your Car:

Plug the appropriate USB cable (USB-A to USB-C or USB-C to USB-C, depending on your car's port) into the adapter and then into your car's wired CarPlay or Android Auto USB port. The adapter's indicator light will begin to blink green, indicating it is powered on and ready for pairing.

Compatible
cars models
800+



Wide Compatibility with **98%** Cars



10

Iphone 6-16 and above
series with ios 10+



11

Android 11
and above

*The **BMW** and **Tesla**
models cannot use the product



Carplay

ATTENTION

Scan QR code to check if
mode of your car



Android Auto

Image: The adapter being plugged into the car's USB port, showing the green indicator light.

2. Pair with Your Phone (First Time Setup):

On your smartphone, ensure both Wi-Fi and Bluetooth are enabled. Navigate to your phone's Bluetooth settings and search for available devices. Select the device named "Carsmart-Adapter-XXXX" (where XXXX is a unique identifier).

Carplay plug & play

Turn on Wi-Fi and Bluetooth on your iPhone,
and find the Bluetooth name (Carsmart Adapter ****)

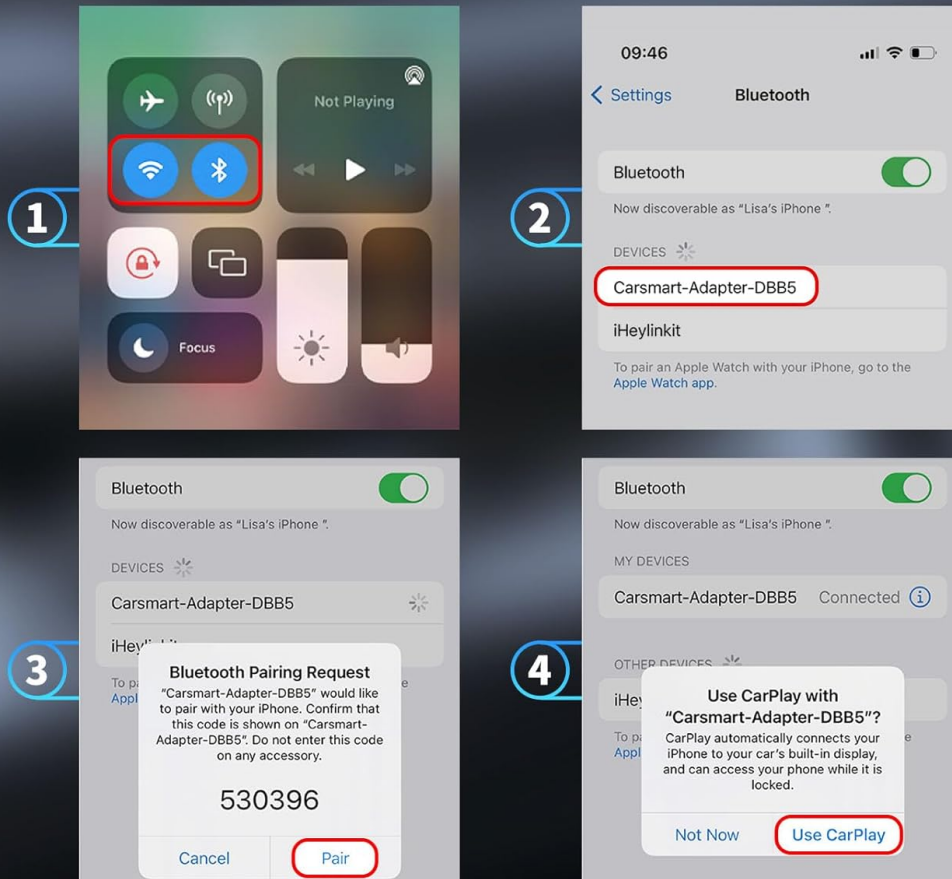


Image: Visual guide for connecting the adapter to an iPhone via Bluetooth settings.

Confirm the pairing request on your phone. Once paired, your car's display will prompt you to continue with either Apple CarPlay or Android Auto. Select "Continue" to proceed.

Android Auto plug & play

Turn on Wi-Fi and Bluetooth on your Android phone, and Click " Pair new device ", find the Bluetooth name (CarsmartAdapter ****)

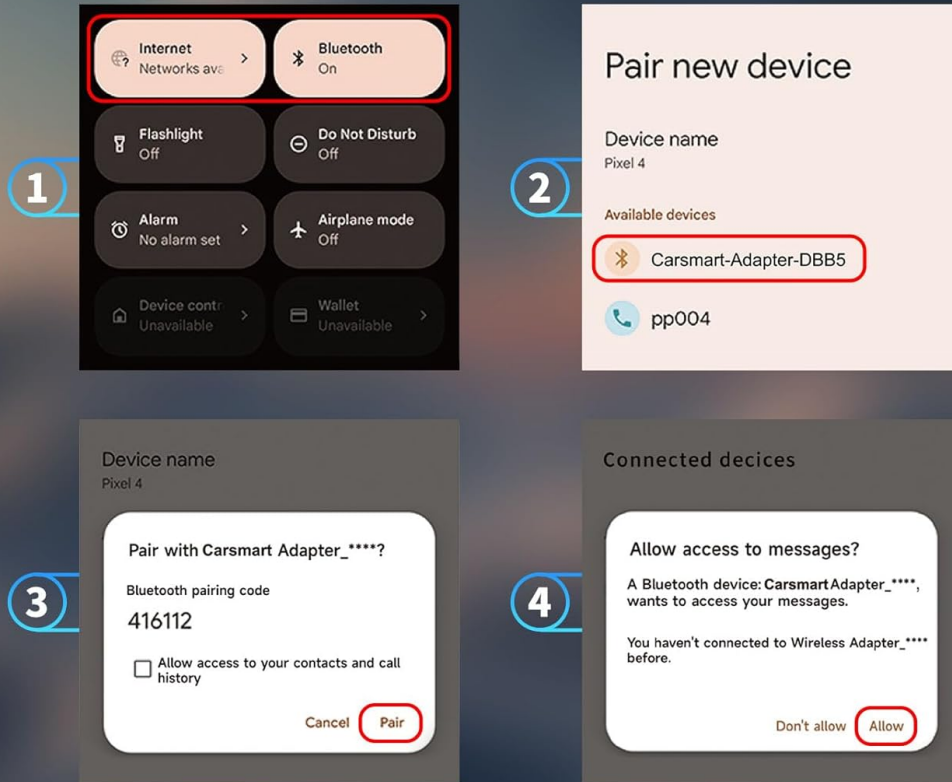


Image: Visual guide for connecting the adapter to an Android phone via Bluetooth settings.

3. Automatic Reconnection:

After the initial setup, the adapter will automatically connect to your phone within seconds when you start your car, providing a seamless wireless experience every time.

Setup Video Tutorial

Your browser does not support the video tag.

Video: "Super Easy Installation" - This video demonstrates the simple steps to install and set up the iHeylinkit wireless adapter in a vehicle.

Your browser does not support the video tag.

Video: "Plug & Play, Fast Connection for iPhone" - This video illustrates the quick plug-and-play process for connecting an iPhone to the wireless adapter.

OPERATING INSTRUCTIONS

Once connected, your car's display will mirror your phone's CarPlay or Android Auto interface. You can interact with your favorite apps directly from the car's touchscreen, steering wheel controls, knob control, or via voice assistant.

STABLE CONNECTION WITHOUT 1S DELAY



Image: The car's display showing the CarPlay/Android Auto interface with various apps.

Key Features:

- **Navigation:** Use Google Maps, Apple Maps, or Waze for real-time directions.
- **Music & Audio:** Stream music from Spotify, Apple Music, Pandora, or other audio apps.
- **Calls & Messaging:** Make and receive calls, send and read messages using voice commands or the car's interface.
- **Voice Assistant:** Activate Siri or Google Assistant for hands-free control.

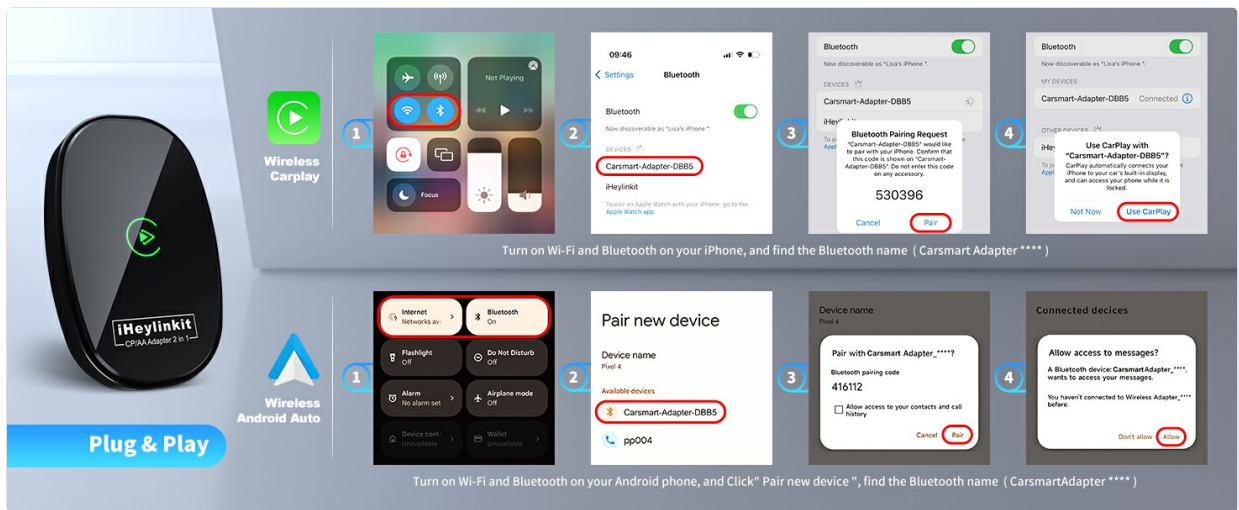


Image: Demonstrates control options including touch screen, steering wheel controls, knob control, and voice assistant.

Operation Video Tutorial

Your browser does not support the video tag.

Video: "Game-Changer for My Car!" - This video demonstrates seamless wireless CarPlay/Android Auto functionality and app integration on the car's display.

COMPATIBILITY

The iHeylinkit 2-in-1 Wireless CarPlay & Android Auto Adapter is designed for vehicles with factory-installed wired CarPlay or Android Auto functionality. It supports:

- iPhone iOS 10 and above
- Android 11 and above
- Vehicles from 2016-2025 with built-in wired CarPlay/Android Auto.

Important Note:

- This product is **NOT compatible** with Tesla or BMW models.
- It is **NOT suitable** for vehicles without built-in CarPlay/Android Auto functions.
- The wireless adapter **does not support** YouTube and Netflix video playback to ensure driving safety.



Image: Compatibility details, including supported car brands and phone operating systems. Links to official compatibility lists are provided below.

[Apple CarPlay Available Models](#)
[Android Auto Compatible Vehicles](#)

TROUBLESHOOTING

If you encounter unstable connection or disconnection issues, please follow these steps:

1. **Check USB Connection:** Ensure the USB cable is firmly plugged into both the adapter and the car's USB port.
2. **Update & Restart Phone:** Update your iOS/Android operating system to the latest version and restart your phone to maintain a normal connection.
3. **Verify Permissions:** Confirm that all relevant permissions (e.g., Bluetooth, Wi-Fi, location) are enabled in your phone's settings for CarPlay/Android Auto.
4. **Bluetooth Occupancy:** If you cannot connect, check if your car's Bluetooth is occupied by another device. If so, disconnect it and restart your phone to connect to the adapter's SSID name.
5. **Sound Delay/Navigation Lag:** Troubleshoot network issues and restart your phone first.
6. **Multiple Phone Pairing:** If using a different phone, ensure the Bluetooth and Wi-Fi of the previously

connected phone are turned off.

Online Firmware Upgrade:

To ensure optimal performance and access to the latest features, you can perform an online firmware upgrade:

1. After your mobile phone is connected to the car box with the wireless CarPlay/Android Auto.
2. Enter **192.168.8.1** in your mobile phone / Android browser.
3. Go into the Upgrade the software section and follow the on-screen instructions.

Applicable models
For **98%** cars with factory Wired Carplay & Wired Android Auto to Wireless Adapter from 2016 and later

Logos for applicable models: Mercedes-Benz, Chevrolet, Nissan, Citroën, Cadillac, Audi, Lexus, Volvo, MG, Renault, Toyota, Peugeot, VW, Hyundai, Bentley, Ferrari, Vauxhall, Fiat, KIA, Mazda, and a 'More' button.

Does not support BMW models and Tesla

! iPhone carplay is not support on Android Auto car screen.
! Android Auto is not support on the carplay screen too.

Carplay: Please scan the QR code to check if the model is suitable before purchasing. Android Auto: Please scan the QR code to check if the model is suitable before purchasing.

Image: Steps for performing an online firmware upgrade for the adapter.

SPECIFICATIONS

Feature	Detail
Product Dimensions	1.57 x 0.39 x 2.44 inches
Item Weight	3.2 ounces
Model Number	M4
Brand	iHeylinkit
Connectivity Technology	Bluetooth, Wi-Fi, USB
Power Source	Bluetooth
Material	Zinc Alloy
Special Feature	Hands-Free Calls, Automatic On/Off



Can I watch Videos via Carplay or Android Auto?

Apple CarPlay/ Android Auto **does not** include any support for video playback.

Image: Detailed dimensions of the iHeylinkit adapter and its accompanying cables.

WARRANTY AND SUPPORT

The iHeylinkit 2-in-1 Wireless CarPlay & Android Auto Adapter comes with a 2-year replacement warranty (no repair required). For any technical assistance or compatibility issues, a North American local technical team provides 7x24 hours online support.

For further assistance, please contact iHeylinkit Official Store support.