

## YuanLey 8 Port 2.5G PoE Unmanaged Switch

# YuanLey 10 Port 2.5G PoE Switch Unmanaged User Manual

Model: 8 Port 2.5G PoE Unmanaged Switch (120W)

Brand: YuanLey

## 1. INTRODUCTION

This manual provides essential information for the proper installation, operation, and maintenance of your YuanLey 10 Port 2.5G PoE Unmanaged Switch. Please read this manual thoroughly before using the device to ensure optimal performance and safety.

## 2. SAFETY INFORMATION

Observe the following safety precautions to prevent damage to the device and ensure user safety:

- Ensure the power supply voltage is within the specified range (AC 100-240V, 50-60Hz).
- Do not open the device casing. Refer all servicing to qualified personnel.
- Avoid placing the switch in areas with high humidity, extreme temperatures, or direct sunlight.
- Ensure proper ventilation to prevent overheating. The fanless design relies on ambient airflow.
- Use only the provided power cord and accessories.
- Disconnect power before cleaning or moving the device.

## 3. PACKAGE CONTENTS

Verify that all items are present in the package:

- 1x YuanLey 10 Port 2.5G PoE Unmanaged Switch
- 1x Power Cord

- 1x User Manual
- 1x Rackmount Kit



Image: The Yuanley 10 Port 2.5G PoE Switch and its retail packaging, illustrating the product and its box.

## 4. PRODUCT OVERVIEW

The Yuanley 10 Port 2.5G PoE Unmanaged Switch is designed to provide high-speed network connectivity with Power over Ethernet capabilities. It features 8x 2.5G Base-T PoE ports and 2x 10G SFP+ ports for flexible network expansion.

### 4.1 Front Panel

# 8-Port 2.5Gbe PoE+ Switch 802.3af/at Compliant

AC/IN 100-240V 50-80Hz  
Built-in Power Supply(**120W**)

S&V Dip Switch

S: Standard Mode

V: VLAN Mode

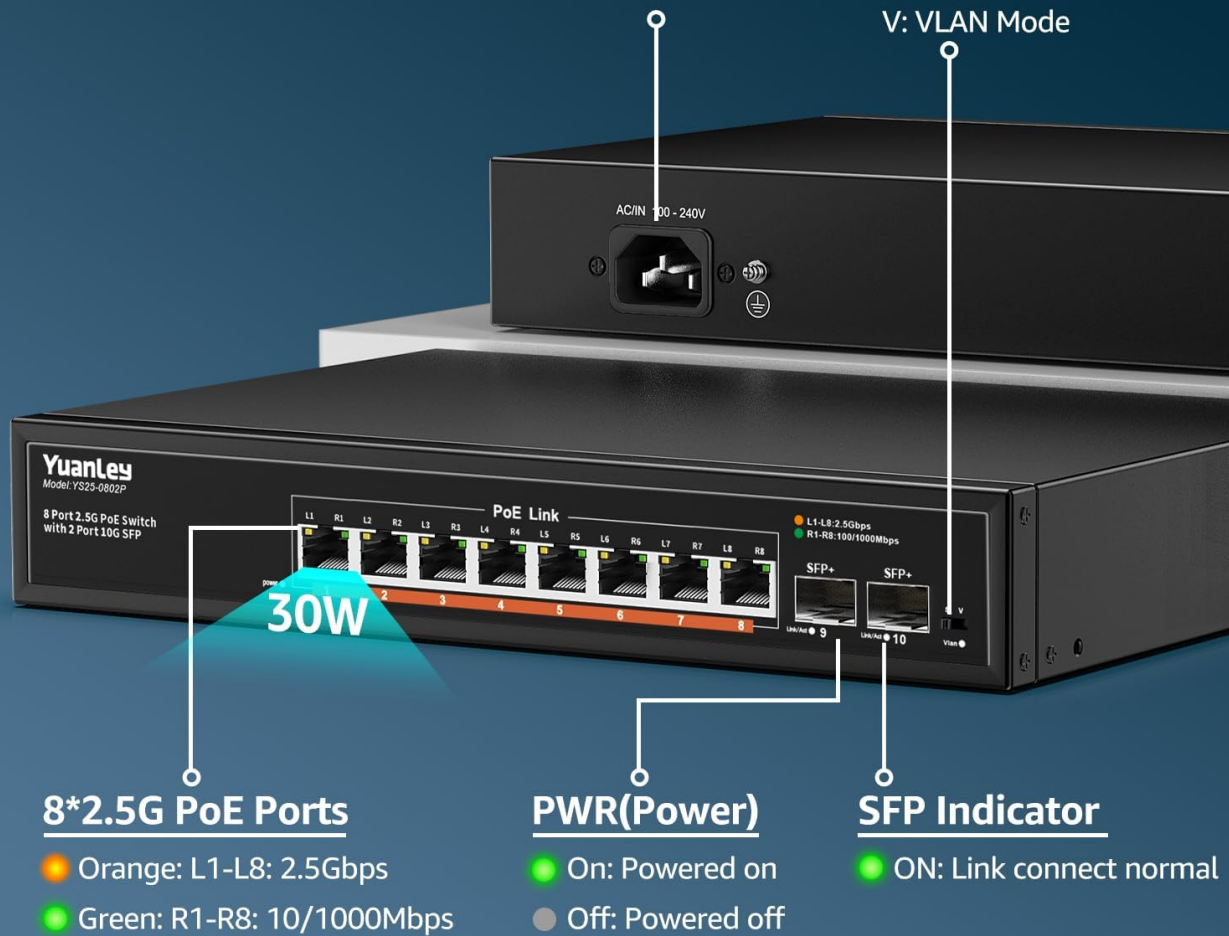


Image: Detailed view of the switch's front and back panels, highlighting the 2.5G PoE ports, 10G SFP+ ports, power input, and VLAN switch.

- **PoE Ports (1-8):** 2.5 Gigabit Ethernet ports supporting IEEE 802.3af/at PoE. Each port can deliver up to 30W, with a total PoE budget of 120W. These ports are compatible with 10/100/1000Mbps and 2.5Gbps devices.
- **10G SFP+ Ports (9-10):** Two 10 Gigabit SFP+ slots for fiber optic connections, compatible with 1G/2.5G/10G SFP modules (modules not included).
- **LED Indicators:**
  - **PWR (Power):** Green indicates power on.
  - **PoE Link/Act:** Orange for 2.5Gbps link, Green for 10/100/1000Mbps link. Flashing indicates data activity.
  - **SFP Indicator:** Green indicates link connection.
- **S&V Dip Switch:** Toggles between Standard Mode and VLAN Mode.

## 4.2 Rear Panel

- **AC Power Input:** Standard AC 100-240V, 50-60Hz input.
- **Grounding Terminal:** For connecting a grounding wire to ensure electrical safety.

## 5. SETUP

The YuanLey 10 Port 2.5G PoE Switch is a plug-and-play device, requiring no complex configuration for basic operation.

### 5.1 Physical Installation

1. **Placement:** Place the switch on a stable, flat surface or mount it in a 19-inch rack using the provided rackmount kit. Ensure adequate space around the device for ventilation.
2. **Power Connection:** Connect the provided power cord to the AC power input on the rear panel of the switch and then to a suitable power outlet. The PWR LED will illuminate green.

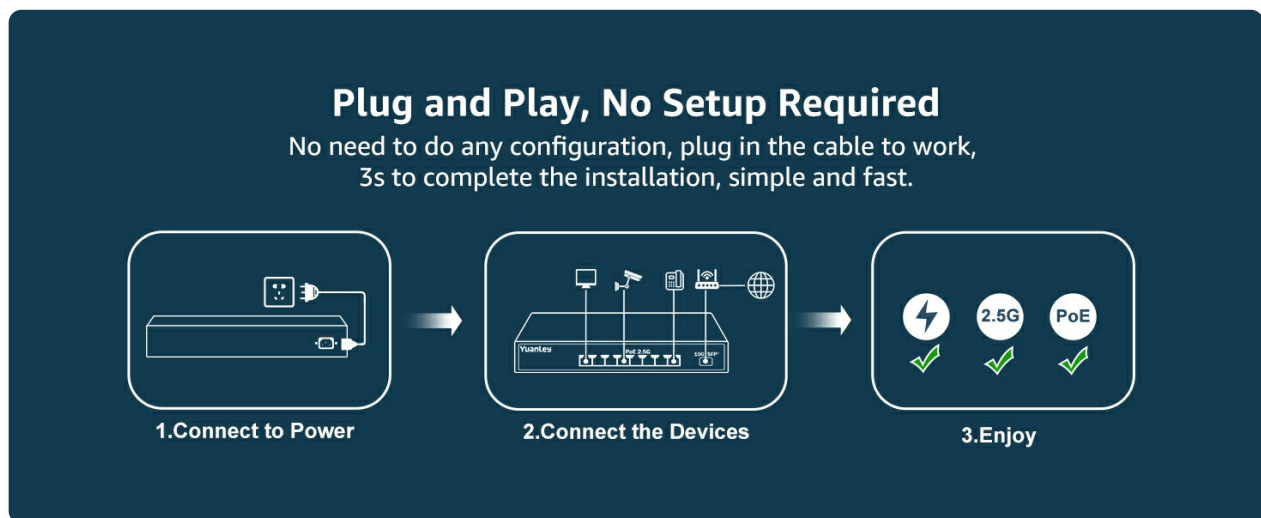


Image: A visual guide to the simple plug-and-play setup process, showing power connection and device connections.

### 5.2 Network Connection

1. **Connecting Non-PoE Devices:** Connect your non-PoE network devices (e.g., computers, NAS, routers) to any of the 2.5G Base-T ports (1-8) using standard Ethernet cables.
2. **Connecting PoE Devices:** Connect your PoE-compatible devices (e.g., IP cameras, wireless access points, IP phones) to any of the 2.5G Base-T PoE ports (1-8). The switch will automatically detect and provide power to these devices.
3. **Uplink Connection:** For connecting to your main network or another switch, use one of the 10G SFP+ ports (9-10) with an appropriate SFP module and fiber optic cable, or use a standard Ethernet port if fiber is not required.

# High Performance PoE Switch Ideal for 2.5G Devices



Wifi 6 Router



2.5G Gaming PC



4K Video

## Non-PoE Devices



IP Camera

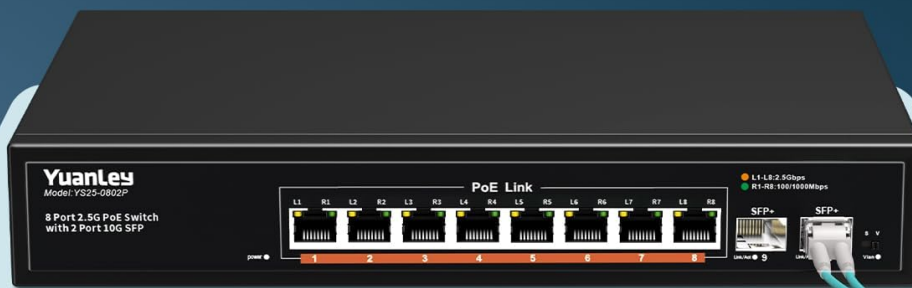


Wireless AP



IP Phone

## PoE Devices



Adaptive 1G/2.5G/10G Optical Fiber Module (The Module is **NOT** included)

Image: An illustration demonstrating how to connect both PoE and non-PoE devices to the switch for a comprehensive network setup.

Your browser does not support the video tag.

Video: A demonstration of connecting devices to the 10 Port 2.5G PoE Ethernet Switch, highlighting its 8x PoE and 2x 10Gb SFP+ ports.

Your browser does not support the video tag.

Video: An overview of the 10 Port 2.5Gb Unmanaged Ethernet Switch, showcasing its 8x 2.5G Base-T ports and ease of use.

Your browser does not support the video tag.

Video: A detailed look at the 2.5Gb PoE switch, demonstrating its features and connectivity options.

Your browser does not support the video tag.

Video: An unboxing and feature overview of the 10-Port 2.5G PoE Switch Unmanaged, showing its components and design.

## 6. OPERATING INSTRUCTIONS

The switch operates automatically once connected. No software configuration is typically required for an unmanaged switch.

## 6.1 Standard Mode

In Standard Mode, all ports communicate freely with each other. This is the default mode for general network use.

## 6.2 VLAN Mode (One-Key VLAN)

To enhance network security and reduce broadcast storms, you can enable VLAN Mode using the S&V Dip Switch. In VLAN Mode, ports 1-8 are isolated from each other but can communicate with the SFP+ uplink ports (9-10). This prevents direct communication between connected devices on ports 1-8, routing all traffic through the uplink ports.



Image: A visual explanation of the One-Key VLAN feature, demonstrating how ports are isolated while maintaining uplink connectivity.

## 7. MAINTENANCE

- **Cleaning:** Use a soft, dry cloth to clean the exterior of the switch. Do not use liquid or aerosol cleaners.
- **Ventilation:** Regularly check that the cooling vents are not obstructed to ensure proper heat dissipation.
- **Firmware:** As an unmanaged switch, firmware updates are generally not required or available.

## 8. TROUBLESHOOTING

If you encounter issues with your switch, refer to the following common problems and solutions:

- **No Power:**
  - Ensure the power cord is securely connected to the switch and a working power outlet.
  - Check if the power outlet is functional by plugging in another device.
- **No Link/Activity on a Port:**



- Verify that the Ethernet cable is properly connected at both ends.
- Try a different Ethernet cable.
- Ensure the connected device is powered on and functioning correctly.
- Check the LED indicator for the port; if it's off, there might be no link.

- **PoE Device Not Receiving Power:**

- Confirm that the connected device is IEEE 802.3af/at compliant.
- Check the total PoE power budget (120W) and individual port power limit (30W) to ensure it's not exceeded.
- Try connecting the PoE device to a different PoE port.

- **Slow Network Speed:**

- Ensure you are using Cat5e or higher-rated Ethernet cables for 2.5G speeds.
- Verify that your connected devices (NICs, routers) support 2.5G Ethernet.
- Check for network congestion or other devices consuming significant bandwidth.

## 9. SPECIFICATIONS

Feature	Specification
Model Number	8 Port 2.5G PoE Unmanaged Switch (120W)
Ports	8 x 2.5G Base-T PoE Ports, 2 x 10G SFP+ Ports
PoE Standard	IEEE 802.3af/at
Total PoE Power Budget	120W
Max Power Per Port	30W
Switching Capacity	60Gbps
Data Rates	10/100/1000Mbps, 2.5Gbps (RJ45); 1G/2.5G/10G (SFP+)
VLAN Feature	One-Key VLAN (Port isolation for RJ45 ports, uplink via SFP+)
Design	Metal Fanless, Rack Mountable
Operating Temperature	-10°C to 50°C
Lightning Protection	6KV
Dimensions	14.06 x 9.49 x 3.66 inches
Item Weight	3.58 pounds
UPC	790885828843

## 10. WARRANTY AND SUPPORT

---

For warranty information and technical support, please refer to the official YuanLey website or contact their customer service directly. Keep your purchase receipt for warranty claims.

© 2023 YuanLey. All rights reserved.