

## ECO-WORTHY AM-L02M5YN-1A

# ECO-WORTHY 5W Solar Panel for Outdoor Security Cameras

Model: AM-L02M5YN-1A

## 1. INTRODUCTION

The ECO-WORTHY 5W Solar Panel is designed to provide a continuous and reliable power supply to compatible outdoor security cameras, eliminating the need for frequent battery changes. Featuring high-efficiency monocrystalline cells, a durable weather-resistant design, and versatile charging interfaces, this solar panel ensures your surveillance system remains operational with minimal maintenance.



*Image 1.1: The ECO-WORTHY 5W Solar Panel connected to various outdoor security cameras, showcasing its multi-interface cable.*

## 2. PACKAGE CONTENTS

Please verify that all items listed below are included in your package before proceeding with installation. If any parts are missing, please contact customer support.

- 1x 5W 5V Solar Panel
- 1x 3m (9.8ft) Triple-Output Cable (USB-C, Micro USB, DC)
- 3x Interface Waterproof Caps
- 1x 360° Adjustable Triangular Bracket
- 1x Set of Screws and Wall Anchors
- 1x Positioning Sticker
- 1x Instruction Manual

## Packing List



Image 2.1: A visual representation of all components included in the ECO-WORTHY solar panel kit, including the solar panel, multi-output cable, mounting bracket, and hardware.

Your browser does not support the video tag.

Video 2.1: An unboxing and overview of the ECO-WORTHY 5W Solar Panel Kit, detailing all included components and their initial assembly.

### 3. INSTALLATION GUIDE

Follow these steps to properly install your ECO-WORTHY Solar Panel for optimal performance.

#### Step 1: Secure the Mounting Base

1. Choose a location that receives maximum direct sunlight throughout the day.
2. Use the provided positioning sticker to mark the drill holes.
3. If mounting on a soft or unstable surface, pre-drill holes with a 6.0 mm drill bit and insert the expansion anchors before securing the base.
4. Secure the mounting base to the desired location using the provided screws.

# 5 Installation Steps

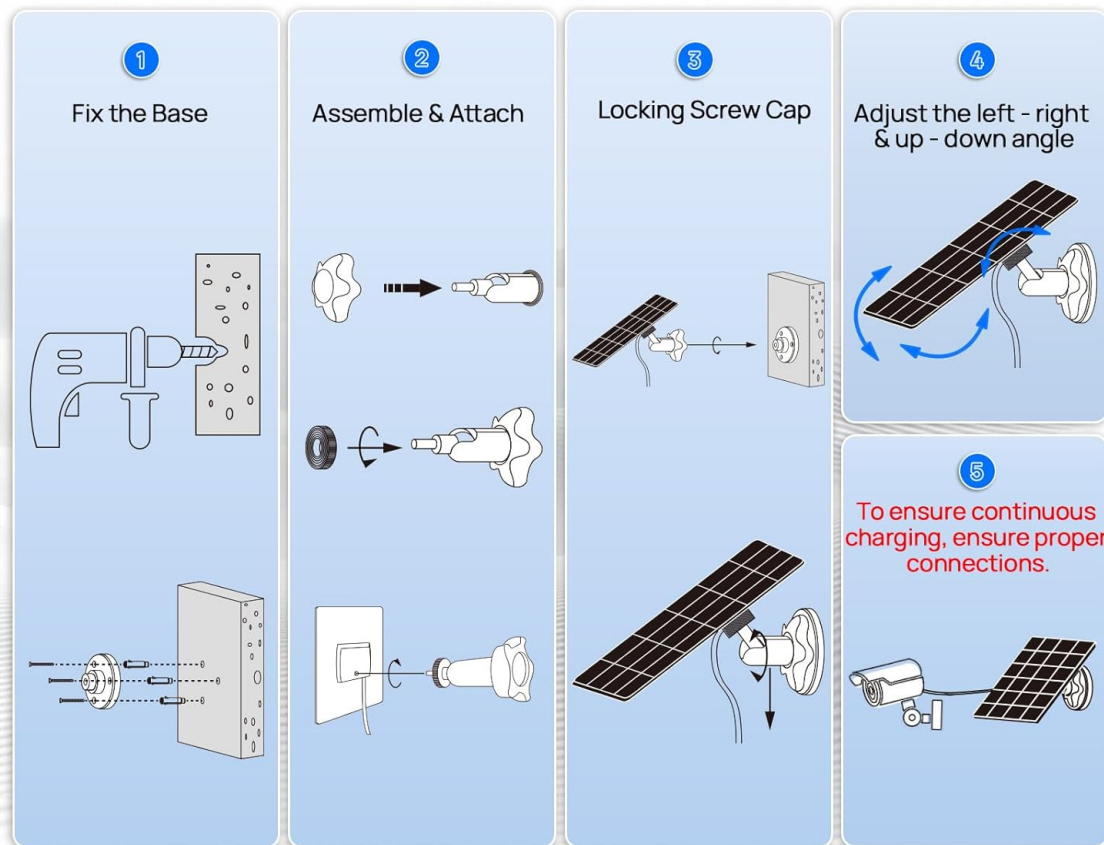


Image 3.1: A step-by-step diagram showing how to fix the base, assemble the joint, lock the screw cap, adjust the angle, and connect the camera.

## Step 2: Install the Solar Panel

1. Insert the locking nut into the ball joint of the adjustable bracket.
2. Screw the round connector nut onto the ball joint.
3. Screw the ball joint into the threaded hole on the back of the solar panel. Tighten it using the included nut.
4. Attach the assembled solar panel and ball joint to the mounting base. Insert the locking nut at the bottom of the joint into the base, ensuring the ball joint tilts slightly upward.

## Step 3: Adjust the Panel Angle

To maximize charging efficiency, adjust the solar panel angle to receive optimal direct sunlight. The panel can tilt 90° vertically, and the mount allows 360° horizontal rotation.

1. Loosen the locking nut on the adjustable bracket.
2. Adjust the tilt and rotation of the solar panel to face the sun directly.
3. Once the desired angle is achieved, tighten the locking nut securely.



**5W Power:  
Keep Your Camera  
Battery Fully  
Charged**



**No Need to Climb Ladder  
Frequently to Charge Battery**

*Image 3.2: The solar panel's adjustable mounting bracket, allowing for precise positioning to capture maximum sunlight.*

#### **Step 4: Check the Installation**

After completing the physical installation, double-check all locking mechanisms and screws to ensure everything is securely fastened and stable.

#### **Step 5: Connect the Camera for Power Supply**

The included 3-meter (9.8ft) triple-output cable supports Type-C, Micro USB, and DC interfaces, making it compatible with a wide range of outdoor surveillance cameras.

1. Connect the appropriate cable end to your security camera's power input.
2. Use the provided IP65 waterproof caps to cover any unused cable ports. This protects the connectors from weather elements and ensures the waterproof integrity of the system.

# 10ft Cable and 3 Charging Interfaces

Fits more outdoor camera models



Image 3.3: The versatile 10-foot cable featuring Type-C, Micro USB, and DC connectors for broad compatibility with various cameras.

Your browser does not support the video tag.

Video 3.1: A demonstration of the solar panel installation process, including securing the base, attaching the panel, adjusting the angle, and connecting the camera.

## 4. OPERATING INSTRUCTIONS

The ECO-WORTHY Solar Panel is designed for automatic operation. Once installed and connected, it will convert sunlight into electrical energy to power and charge your compatible security camera's battery.

- **High Efficiency:** The panel utilizes high-efficiency monocrystalline BC cells, achieving a power conversion efficiency of up to 25%.
- **Optimal Sunlight:** Ensure the panel is positioned to receive maximum direct sunlight throughout the day for optimal charging performance. Regularly check for any obstructions (e.g., leaves, dirt) that might block sunlight.
- **Anti-Dust Surface:** The uniquely upgraded anti-dust surface actively minimizes dust buildup, helping to maintain optimal light absorption and consistent charging performance.

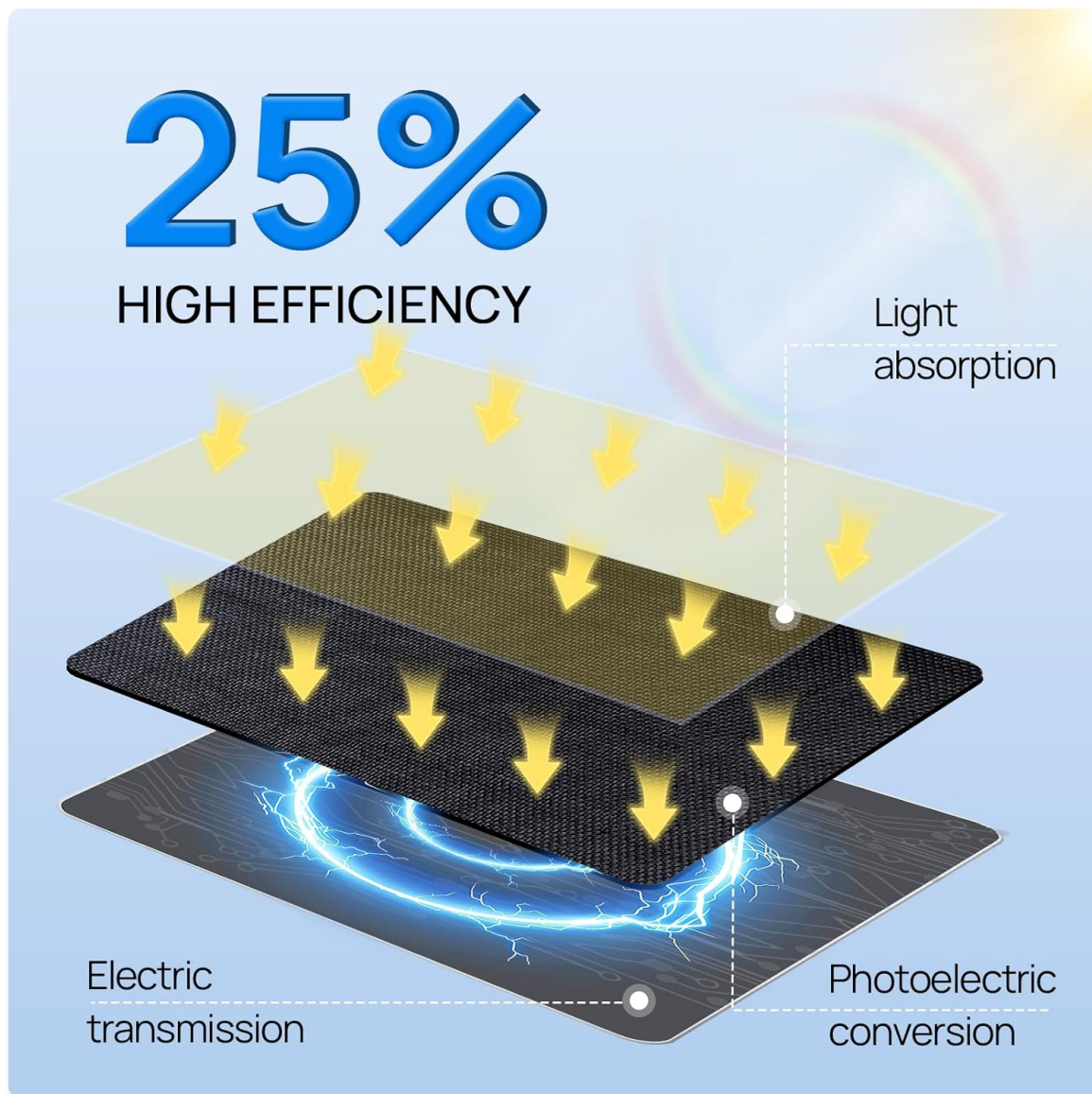


Image 4.1: An illustration demonstrating the 25% high efficiency of the solar panel, showing the process from light absorption to electric transmission.

## 5. COMPATIBILITY

This solar panel is designed for broad compatibility with various outdoor security cameras. Please review the compatibility details below:

- **Compatible with:**

- Ring outdoor cam (Stick Up Cam) battery / solar (2nd and 3rd Generation)
- Ring Spotlight Cam Plus/Pro battery/solar
- Wyze Outdoor Cam V1/V2

- **NOT Compatible with:**

- Ring outdoor cam (Stick Up Cam) (1st Generation)
- Ring Doorbell series
- Ring plug-in / wired camera versions
- Wyze Outdoor Battery Camera



# STRONG

## Compatibility



Compatible with



Stick Un Cam  
(Battery version)



Stick Up Cam Pro  
(Battery version)



Spotlight Cam Plus  
(Battery version)



Spotlight Cam Pro  
(Battery version)

Not Compatible with



Stick Up Cam  
(Plug-in)



Stick Up Cam Pro  
(Plug-in)

Image 5.1: A clear chart indicating which Ring and Wyze camera models are compatible and incompatible with the ECO-WORTHY solar panel.

## 6. MAINTENANCE

The ECO-WORTHY Solar Panel is designed for durability and minimal maintenance. Follow these guidelines to ensure long-lasting performance:

- **Weather Resistance:** The panel features an IP65 waterproof design, capable of withstanding harsh weather conditions such as heavy snow and torrential rain. The ETFE material provides excellent weather resistance and anti-aging properties, making it suitable for prolonged outdoor use.
- **Dust Protection:** The unique dust-proof surface effectively reduces dust accumulation. For optimal performance, periodically wipe the surface of the solar panel with a soft, damp cloth to remove any accumulated dirt or debris.
- **Cable Protection:** Always ensure any unused ports on the triple-output cable are covered with the provided waterproof caps to prevent moisture and dust ingress.





Image 6.1: The solar panel highlighting its IP65 waterproof and dustproof features, with a close-up of the waterproof caps protecting the cable connectors.

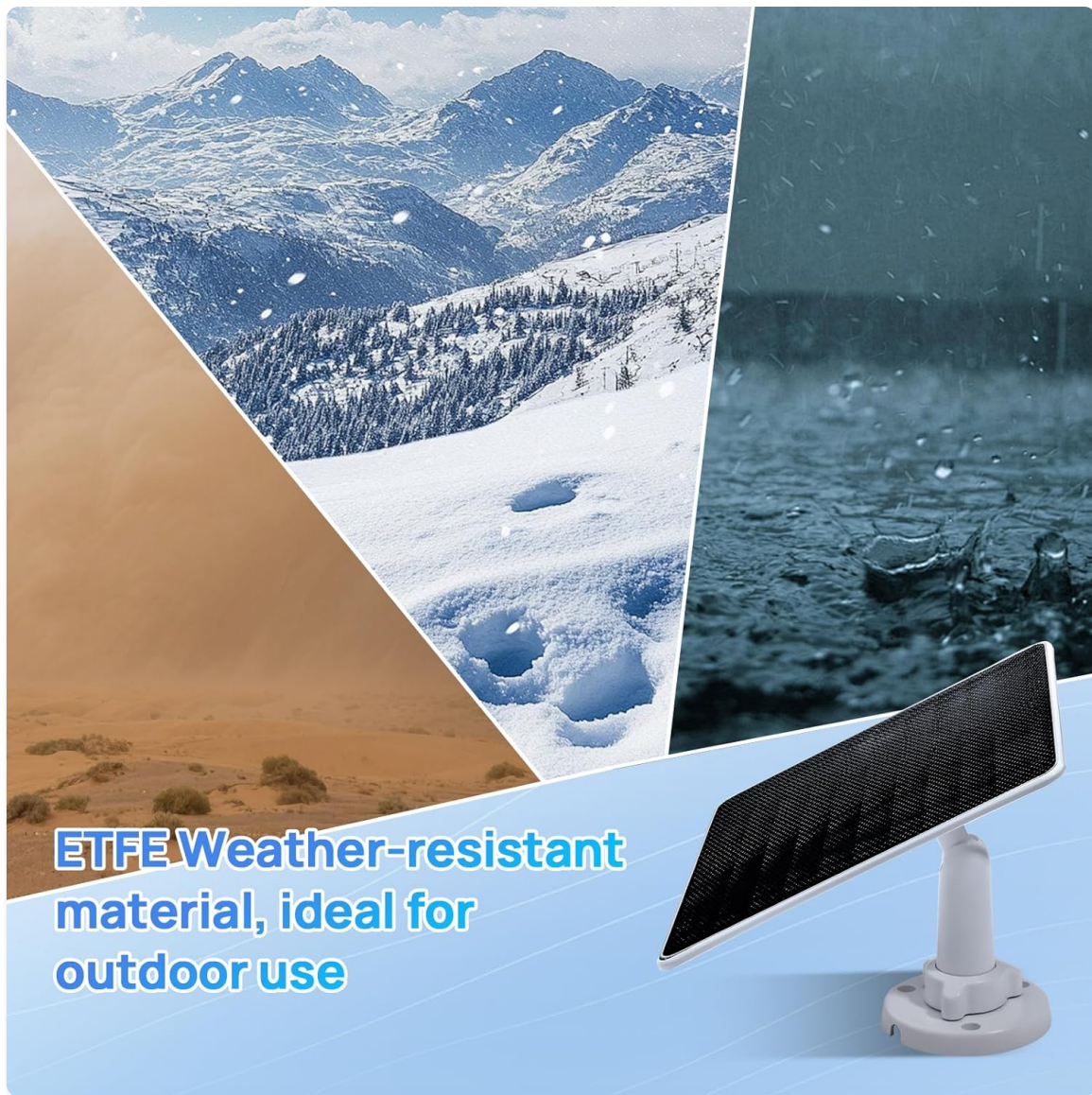


Image 6.2: The solar panel demonstrating its resilience in diverse weather conditions, emphasizing the ETFE weather-resistant material.

## 7. TROUBLESHOOTING

If your solar panel is not providing power to your camera, consider the following:

- **No Sunlight:** Ensure the solar panel is receiving direct sunlight. Obstructions like shade from trees, buildings, or dirt on the panel surface can significantly reduce charging efficiency.
- **Incorrect Angle:** Adjust the panel's angle to face the sun directly. Refer to Section 3, Step 3 for guidance on adjusting the panel angle.
- **Loose Connections:** Verify that all cable connections between the solar panel and the camera are secure.
- **Incompatible Camera:** Double-check your camera's compatibility with the solar panel. Refer to Section 5 for a list of compatible and incompatible devices.
- **Uncovered Ports:** Ensure all unused cable ports are covered with the waterproof caps to prevent short circuits or damage from moisture.

## 8. SPECIFICATIONS

Feature	Specification
Brand	ECO-WORTHY
Model Number	AM-L02M5YN-1A
Material	Monocrystalline Silicon, ETFE, Aluminum
Product Dimensions	8.31"L x 6.77"W x 1.89"H
Item Weight	0.4 Kilograms (14 ounces)
Efficiency	25%
Maximum Power	5 Watts
Output Voltage	5 Volts
Color	Black
Special Feature	Portable
UPC	810127139213

## 9. WARRANTY AND SUPPORT




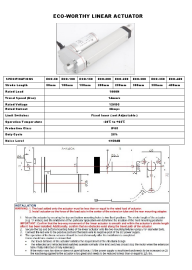
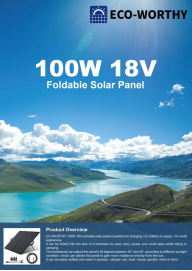

ECO-WORTHY stands behind the quality and performance of its products. We offer comprehensive after-sales service to ensure your peace of mind.

- **Warranty:** This product comes with a two-year manufacturer's warranty.
- **Technical Support:** Enjoy 24/7 technical support for any issues you may encounter during use. Lifetime technical support is also provided.

### Contact Information:

- **Website:** [www.eco-worthy.com/](http://www.eco-worthy.com/)
- **Facebook:** [www.facebook.com/ecoworthy.store](https://www.facebook.com/ecoworthy.store)
- **Email:** [customer.service@eco-worthy.com](mailto:customer.service@eco-worthy.com)



	<p><a href="#">ECO-WORTHY APP User Manual: Connect and Control Your Device via Bluetooth &amp; WiFi</a></p> <p>Comprehensive user manual for the ECO-WORTHY APP, guiding you through app installation, Bluetooth and WiFi connection, device management, and troubleshooting. Learn to connect your ECO-WORTHY device easily.</p>
	<p><a href="#">ECO-WORTHY 51.2V 100AH LiFePO4 Battery User Companion Software Guide</a></p> <p>This guide provides detailed instructions for using the ECO-WORTHY companion mobile application and the PC-based BMS Tool ES-UP software to monitor and manage ECO-WORTHY 51.2V 100AH LiFePO4 batteries. It covers app installation, Bluetooth and WiFi connectivity, data monitoring, troubleshooting, and PC software setup.</p>
	<p><a href="#">ECO-WORTHY 100W Portable Solar Panel User Guide</a></p> <p>User guide for the ECO-WORTHY 100W portable solar panel, covering technical specifications, safety tips, what's in the box, product features, customer support, and frequently asked questions.</p>
	<p><a href="#">ECO-WORTHY Linear Actuator Installation and Specifications</a></p> <p>This document provides detailed specifications, installation instructions, and safety warnings for the ECO-WORTHY Linear Actuator. It covers product features, mounting guidelines, and electrical connections for various models.</p>
	<p><a href="#">ECO-WORTHY 100W 18V Foldable Solar Panel - Portable Power for Outdoor Use</a></p> <p>Discover the ECO-WORTHY 100W 18V Foldable Solar Panel. Lightweight, portable, and IP65 waterproof, it's ideal for charging 12V batteries and small appliances during camping, RV trips, and outdoor adventures. Features high-efficiency monocrystalline cells and adjustable kickstands.</p>
	<p><a href="#">ECO-WORTHY App User Manual: Connect and Control Your Devices</a></p> <p>Comprehensive user manual for the ECO-WORTHY App, guiding users through installation, Bluetooth and WiFi connectivity, device management, and common operations for ECO-WORTHY products.</p>