

MZEIBO tv soundbar

MZEIBO TV Sound Bar User Manual

Model: tv soundbar | Brand: MZEIBO

1. SAFETY INFORMATION

Please read all safety instructions carefully before using this product. Keep this manual for future reference.

- Do not expose the soundbar to rain, moisture, or extreme temperatures.
- Do not block any ventilation openings. Ensure adequate space around the soundbar for proper airflow.
- Use only the power adapter supplied with the device.
- Do not attempt to disassemble or modify the soundbar. Refer all servicing to qualified personnel.
- Avoid placing the soundbar near heat sources such as radiators, heat registers, stoves, or other apparatus (including amplifiers) that produce heat.
- Protect the power cord from being walked on or pinched, particularly at plugs, convenience receptacles, and the point where they exit from the apparatus.

2. PACKAGE CONTENTS

Verify that all items listed below are included in your package:

- MZEIBO TV Sound Bar
- Remote Control
- ARC Cable (HDMI)
- Optical Cable
- Audio Line (AUX Cable)
- Power Supply Adapter
- Wall Mount Screws
- User Manual



Figure 2.1: Contents of the MZEIBO TV Sound Bar package.

3. PRODUCT OVERVIEW

The MZEIBO TV Sound Bar is a compact audio device designed to enhance your home entertainment experience with powerful and clear sound. It features multiple connectivity options and sound modes for various content types.



Figure 3.1: MZEIBO TV Sound Bar and Remote Control.

3.1. Controls and Ports

Familiarize yourself with the input ports and controls located on the soundbar:

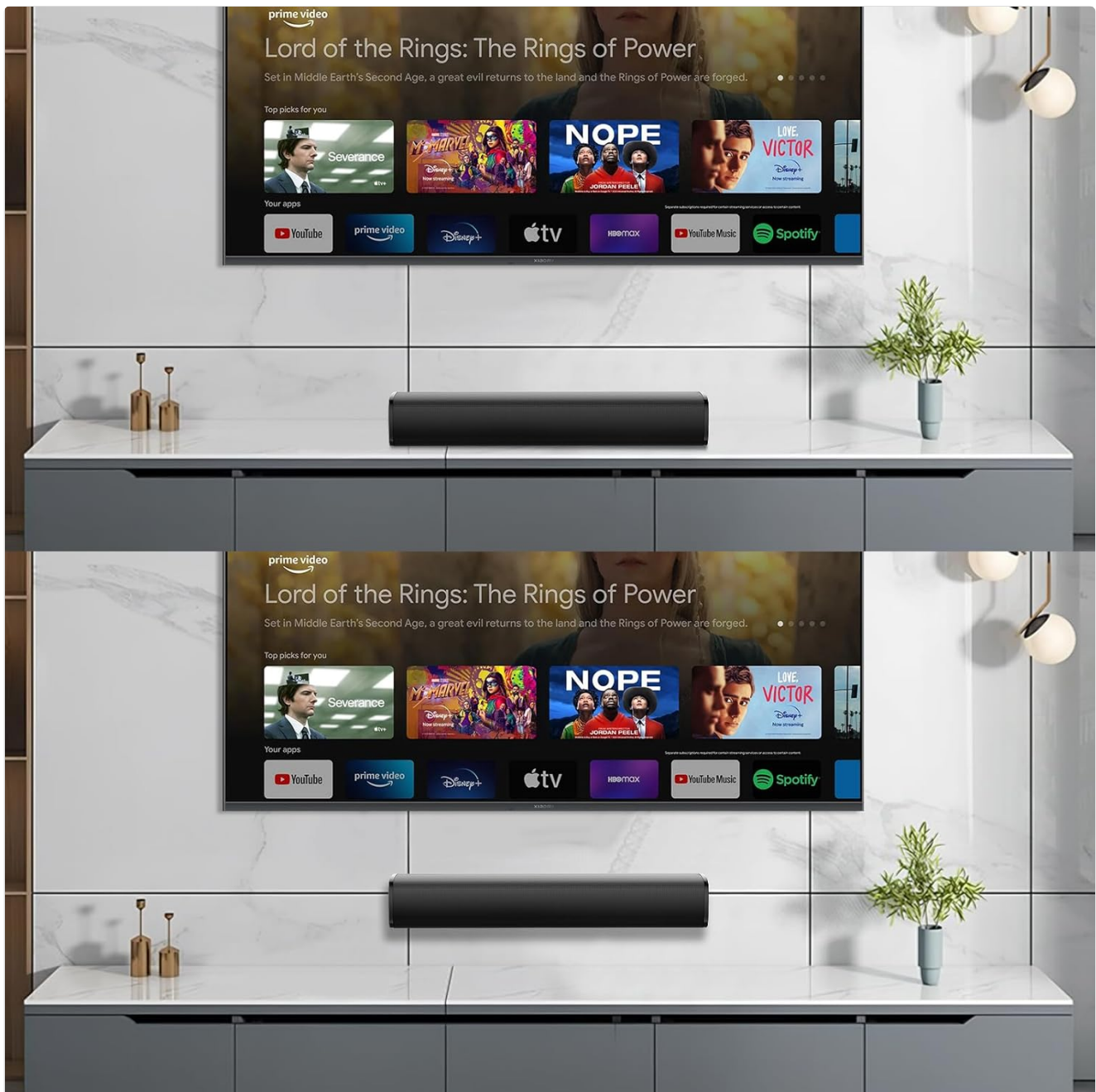


Figure 3.2: Connectivity Ports of the Sound Bar.

- **AUX Input:** For connecting devices via a 3.5mm audio cable.
- **OPTICAL Input:** For connecting devices via an optical digital audio cable.
- **HDMI (ARC) Input:** For connecting to a TV's HDMI ARC port for high-quality audio and control.
- **DC IN:** Power input port for the supplied power adapter.
- **Power/Mode Button:** Located on the side, press to power on/off or cycle through input modes.
- **Volume Buttons (+/-):** Located on the side, press to adjust volume.

4. SETUP

4.1. Placement

For optimal sound performance, place the soundbar centrally below your TV. Ensure it is on a stable, flat surface or securely mounted to a wall.

Multiple Connection & BT 5.0



Bluetooth



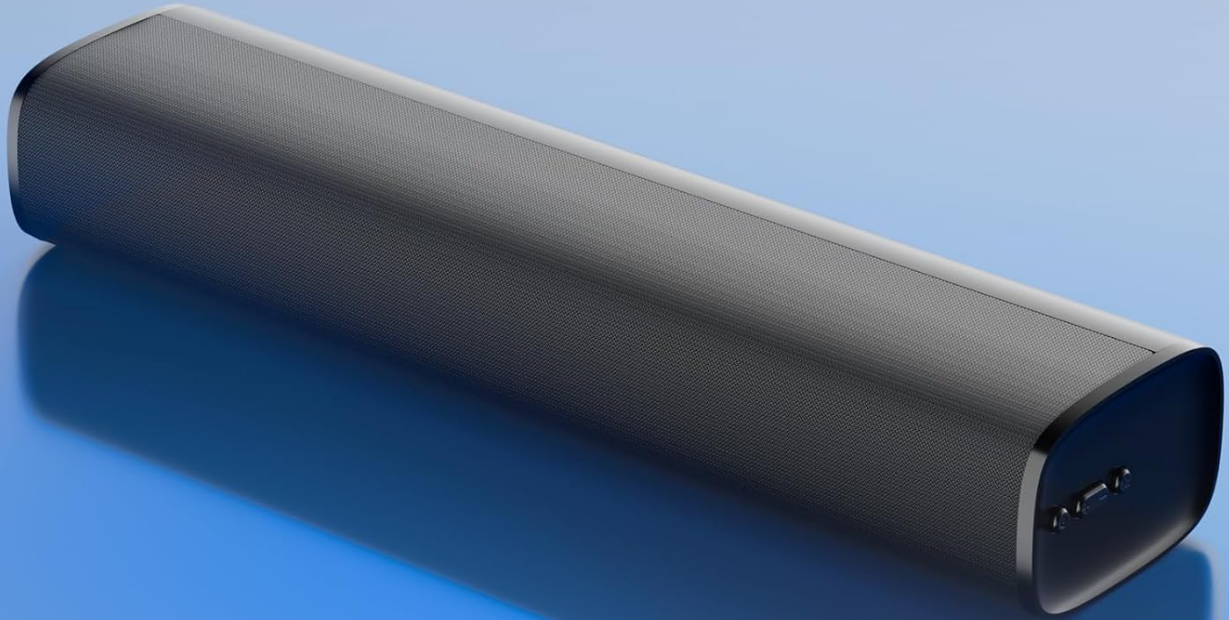
HDMI(ARC)



Optical



3.5mm Aux



Television



Projector



Desktop



Laptop



Tablet PC



Mobile Phone

Figure 4.1: Recommended Sound Bar Placement.

4.2. Connections

Connect the soundbar to your audio source using one of the following methods:

1. HDMI (ARC) Connection:

- Connect one end of the HDMI cable to the HDMI (ARC) port on the soundbar.
- Connect the other end to the HDMI (ARC) port on your TV.
- Ensure your TV's audio output is set to HDMI ARC.

2. Optical Connection:

- Connect one end of the optical cable to the OPTICAL port on the soundbar.
- Connect the other end to the Optical Digital Audio Out port on your TV or audio source.
- Ensure your TV's audio output is set to Optical.

3. AUX Connection:

- Connect one end of the 3.5mm AUX cable to the AUX port on the soundbar.

- Connect the other end to the 3.5mm audio output (headphone jack) on your TV, PC, or other audio device.

4. **Bluetooth Connection:**

- Power on the soundbar and switch to Bluetooth mode (indicated by a blue light).
- Enable Bluetooth on your device (smartphone, tablet, PC).
- Search for "MZEIBO Sound Bar" in your device's Bluetooth settings and pair.

5. **OPERATING INSTRUCTIONS**

5.1. **Power On/Off**

Press the Power button on the soundbar or the remote control to turn the unit on or off.

5.2. **Input Source Selection**

Press the 'Mode' button on the remote control or the power/mode button on the soundbar to cycle through the available input sources: Bluetooth, HDMI (ARC), Optical, and AUX.

5.3. **Volume Control**

Use the Volume + and Volume - buttons on the soundbar or the remote control to adjust the audio level.

5.4. **Sound Modes**

The soundbar features three optimized sound modes for different content types:

- **Movie Mode:** Enhances dialogue clarity and provides a wider soundstage for cinematic experiences.
- **Music Mode:** Delivers balanced audio with rich bass and clear highs, ideal for music playback.
- **News Mode:** Optimizes vocal frequencies for clear speech, suitable for news broadcasts and talk shows.

Press the corresponding button on the remote control to select your desired sound mode.

3 equalizer modes adjust the sound for different scenarios



Figure 5.1: Sound Mode Selection.

6. MAINTENANCE

Proper maintenance ensures the longevity and performance of your soundbar:

- **Cleaning:** Use a soft, dry cloth to clean the surface of the soundbar. Do not use liquid cleaners or aerosols.
- **Storage:** If storing the soundbar for an extended period, disconnect it from power and store it in a cool, dry place.
- **Ventilation:** Ensure the ventilation openings are clear of dust and debris.

7. TROUBLESHOOTING

If you encounter issues with your MZEIBO TV Sound Bar, refer to the following table for common problems and solutions:

Problem	Possible Cause	Solution
---------	----------------	----------

Problem	Possible Cause	Solution
No power	Power cable not connected; Power outlet not active.	Ensure power cable is securely connected. Try a different power outlet.
No sound	Incorrect input source selected; Volume too low; Cable not connected properly; TV audio output settings incorrect.	Select the correct input source (HDMI ARC, Optical, AUX, Bluetooth). Increase volume. Reconnect audio cables. Check TV audio output settings (e.g., PCM for Optical).
Bluetooth pairing failed	Soundbar not in pairing mode; Device too far; Interference.	Ensure soundbar is in Bluetooth mode. Move device closer to soundbar. Turn off other Bluetooth devices.
Remote control not working	Batteries low/dead; Obstruction between remote and soundbar.	Replace remote control batteries. Remove any obstructions. Ensure remote is pointed directly at the soundbar's sensor.

8. SPECIFICATIONS

Detailed technical specifications for the MZEIBO TV Sound Bar:

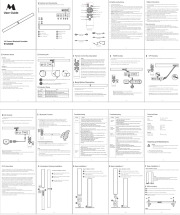
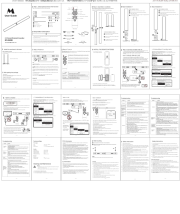
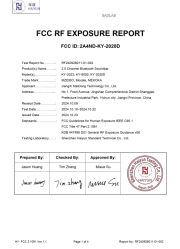

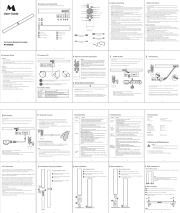

Feature	Specification
Model Name	tv soundbar
Speaker Type	Soundbar
Color	Balck
Product Dimensions	17"D x 2.7"W x 3.9"H (420mm x 69mm x 100mm)
Item Weight	4.11 pounds (1.87 Kilograms)
Power Source	Corded Electric
Speaker Maximum Output Power	50 Watts
Frequency Response	20 KHz
Connectivity Technology	ARC, Bluetooth 5.0, Optical, Auxiliary
Audio Output Mode	Stereo
Mounting Type	Tabletop Mount

9. WARRANTY AND SUPPORT

For warranty information and customer support, please refer to the documentation provided with your purchase or visit the official MZEIBO brand store.

MZEIBO Brand Store: <https://www.amazon.com/stores/MZEIBO/page/6DD51BB2-1470-4B26-9562-D87E6B080A13>

Related Documents - tv soundbar

	<p>MZEIBO KY-2020D 2.0 Channel Bluetooth Soundbar User Guide</p> <p>This user guide provides instructions for setting up, operating, and troubleshooting the MZEIBO KY-2020D 2.0 Channel Bluetooth Soundbar. Learn about features, safety instructions, connection methods (HDMI ARC, Optical, AUX, Bluetooth), remote control functions, and installation options.</p>
	<p>Mzeibo KY-2020D 2.0 Channel Bluetooth Soundbar User Guide</p> <p>This user guide provides instructions for setting up, operating, and troubleshooting the Mzeibo KY-2020D 2.0 Channel Bluetooth Soundbar. It covers installation, connections (HDMI ARC, Optical, AUX, Bluetooth), remote control functions, technical specifications, and safety information.</p>
	<p>FCC RF Exposure Report for MZEIBO Bluetooth Soundbar (Model KY-2020D)</p> <p>This document presents the FCC RF Exposure Report for the MZEIBO 2.0 Channel Bluetooth Soundbar, models KY-2023, KY-8000, and KY-2020D, tested by Shenzhen Haiyun Standard Technical Co., Ltd. It details MPE calculations and results according to FCC guidelines.</p>
	<p>GEOYEAO BT103 Soundbar User Manual</p> <p>Comprehensive user manual for the GEOYEAO BT103 Soundbar, covering features, safety information, installation, connections, remote control, troubleshooting, and product specifications.</p>
	<p>MZEIBO KY-2020D 2.0 Channel Bluetooth Soundbar User Guide</p> <p>This user guide provides instructions for setting up, operating, and troubleshooting the MZEIBO KY-2020D 2.0 Channel Bluetooth Soundbar. Learn about features, safety instructions, connection methods (HDMI ARC, Optical, AUX, Bluetooth), remote control functions, and installation options.</p>
	<p>Maraawa KY-2020 2.0 Channel Bluetooth Soundbar User Guide</p> <p>User guide for the Maraawa KY-2020 2.0 Channel Bluetooth Soundbar, featuring HD HiFi Stereo Sound. Details connections (HDMI ARC, Optical, AUX), controls, and wall mounting instructions.</p>

