

Votex DP060-LINCOLN-17

Votex Magnetic Oil Drain Plug User Manual

Model: DP060-LINCOLN-17

1. INTRODUCTION

This manual provides essential information for the proper installation, operation, and maintenance of your Votex Magnetic Oil Drain Plug. This product is designed to enhance engine longevity by capturing ferrous metal particles from your engine oil, ensuring cleaner oil circulation.

The Votex Magnetic Oil Drain Plug is proudly manufactured in the USA from high-quality stainless steel, featuring a robust neodymium magnet engineered for high-temperature environments.

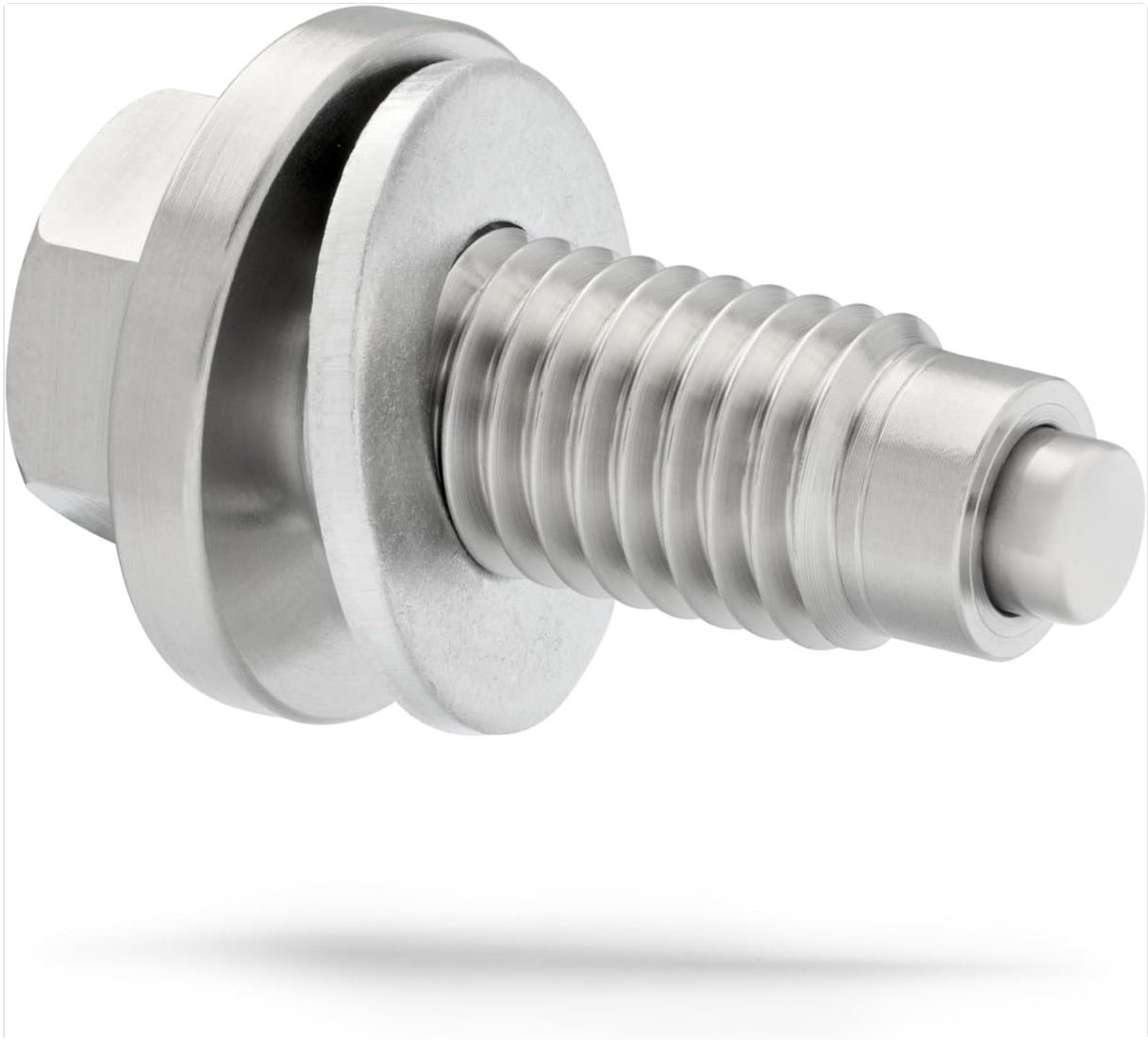


Image 1.1: The Votex Magnetic Oil Drain Plug, made from stainless steel with an integrated magnet.

2. IMPORTANT SAFETY INFORMATION & DISCLAIMER

WARNING: Improper installation can lead to severe engine damage or oil leaks. Always consult your vehicle's owner/repair manual for specific torque specifications and procedures.

- Inspect the drain plug and magnet for any damage prior to installation. Do not install if damage is observed.
- Ensure proper clearance for the drain plug by slowly turning over the engine or drive gear by hand after installation, verifying no contact with internal components.
- Crush washers are for one-time use only. A new crush washer must be used with every oil change to ensure a proper seal and prevent leaks.
- Bridgewood INC (Votex) is not liable for damage incurred due to an incorrectly installed drain plug. Installation of this product is at the user's discretion.

3. INSTALLATION INSTRUCTIONS

Follow these steps for the correct installation of your Votex Magnetic Oil Drain Plug. It is recommended to perform this during a routine oil change.

1. **Prepare Vehicle:** Ensure the vehicle is on a level surface and the engine is cool. Place a suitable oil drain pan beneath the oil pan.

2. **Drain Old Oil:** Carefully remove the existing oil drain plug and allow all old engine oil to drain completely.
3. **Prepare New Plug:** Ensure the Votex Magnetic Oil Drain Plug is clean and free of debris. Place the included aluminum crush washer onto the Votex drain plug. Remember, this washer is for one-time use.
4. **Install New Plug:** Hand-thread the Votex Magnetic Oil Drain Plug into the oil pan. Ensure it threads smoothly without resistance.
5. **Torque to Specification:** Using a 15mm wrench, tighten the drain plug to the torque specification recommended in your vehicle's owner/repair manual. *Do not overtighten.*
6. **Check Clearance:** After installation, slowly turn over the engine or drive gear by hand to confirm there is no contact between the drain plug and any internal engine components.
7. **Refill Oil:** Refill the engine with the manufacturer-recommended type and quantity of fresh engine oil.
8. **Check for Leaks:** Start the engine and allow it to run for a few minutes. Turn off the engine and carefully inspect the drain plug area for any signs of oil leaks.

PRECISION IN EVERY OIL CHANGE



Image 3.1: Professional installation of an oil drain plug, emphasizing precision during oil changes.

4. OPERATING PRINCIPLES

The Votex Magnetic Oil Drain Plug features a powerful N48 grade neodymium magnet embedded within its

stainless steel body. This magnet is designed to attract and hold ferrous (iron-containing) metal particles that circulate in your engine oil. These particles are typically generated from normal engine wear and tear. By capturing these abrasive particles, the magnetic drain plug helps to:

- Reduce wear on internal engine components.
- Maintain cleaner engine oil for longer periods.
- Potentially extend engine life.

The magnet is rated to function effectively in high temperatures up to 150°C (302°F), which is well above typical engine oil operating temperatures (194-230°F).

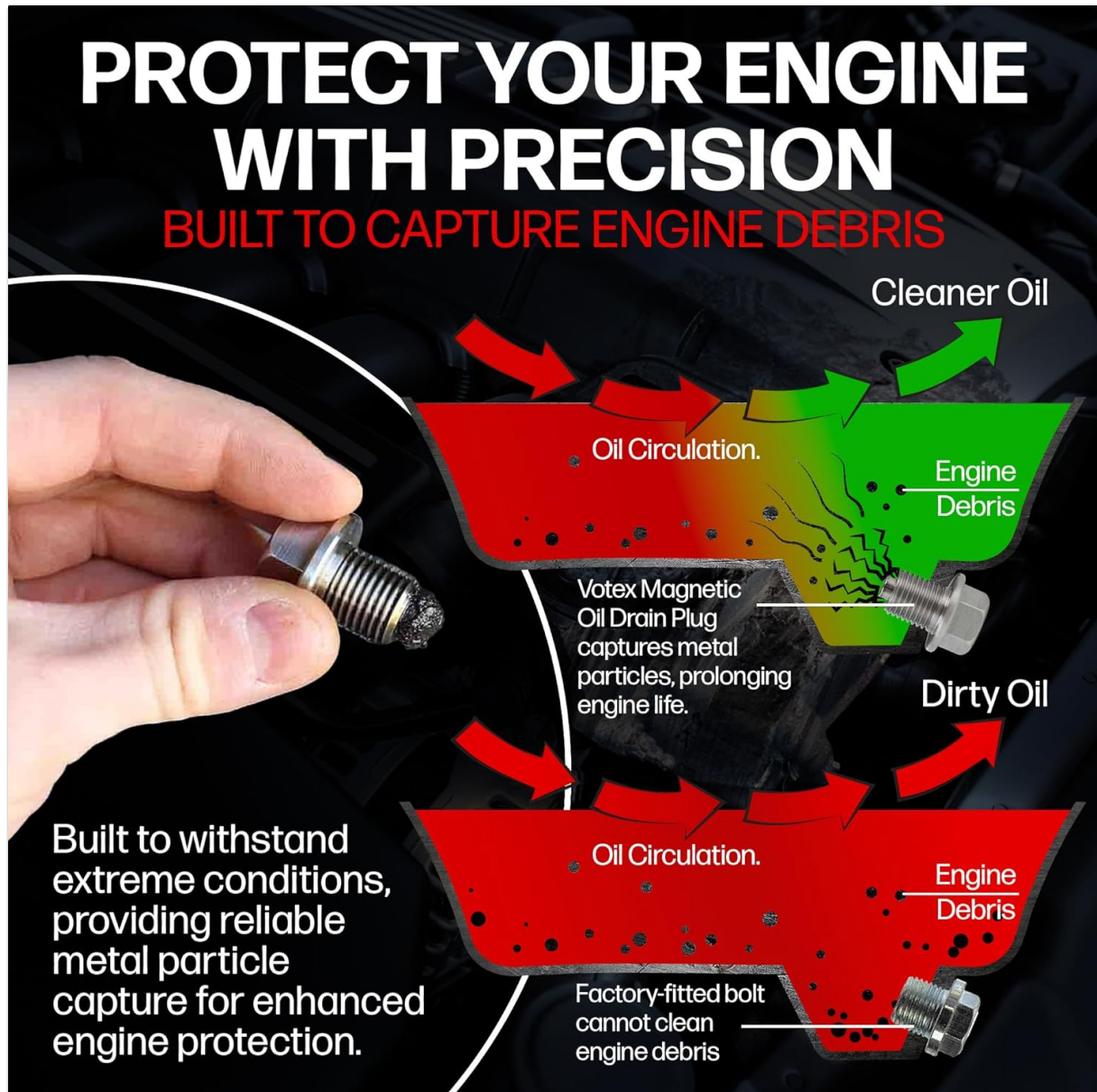


Image 4.1: Illustration demonstrating how the Vortex Magnetic Oil Drain Plug captures engine debris, leading to cleaner oil circulation compared to a standard plug.

5. MAINTENANCE

Regular maintenance of your Vortex Magnetic Oil Drain Plug is simple and should be performed during every oil change.

1. **Remove Plug:** During your routine oil change, remove the Vortex Magnetic Oil Drain Plug.
2. **Inspect Magnet:** Observe the metal particles collected on the magnet. This indicates the plug is functioning correctly.

3. **Clean Magnet:** Carefully wipe off all accumulated ferrous particles from the magnet using a clean rag or paper towel.
4. **Replace Washer:** Always replace the aluminum crush washer with a new one. Crush washers are single-use items. Replacement washers can be found by searching for B07ZRY3KVP.
5. **Reinstall Plug:** Reinstall the cleaned drain plug with the new crush washer, following the installation steps outlined in Section 3.

UNCOMPROMISING OIL DRAIN PLUG

Our oil drain plug combines a powerful neodymium magnet, durable 304 USA stainless steel, and a secure aluminum crush washer. Easy to install and clean, it ensures optimal performance and long-lasting protection.



**NEODYMIUM
MAGNET**



**304 USA
STAINLESS STEEL**



**ALUMINUM
CRUSH WASHER**

Image 5.1: Key components of the Votex Magnetic Oil Drain Plug, including the neodymium magnet, 304 USA stainless steel body, and the aluminum crush washer.

6. TROUBLESHOOTING

Problem	Possible Cause	Solution
---------	----------------	----------

Problem	Possible Cause	Solution
Oil Leak from Drain Plug	<ul style="list-style-type: none"> Crush washer not replaced. Drain plug not torqued correctly (undertightened or overtightened). Damaged oil pan threads. Damaged drain plug. 	<ul style="list-style-type: none"> Always use a new crush washer with each oil change. Re-torque the plug to vehicle manufacturer specifications. Inspect oil pan threads for damage. If damaged, professional repair may be required. Inspect the drain plug for cracks or deformities. Replace if damaged.
No Metal Particles on Magnet	<ul style="list-style-type: none"> Engine is new or very clean. Magnet is damaged or demagnetized (unlikely for neodymium). 	<ul style="list-style-type: none"> This is normal for engines with minimal wear. Continue regular oil changes. Inspect the magnet for physical damage. If the magnet appears intact, it is likely functioning.
Difficulty Threading Plug	<ul style="list-style-type: none"> Cross-threading. Incorrect plug size for application. Damaged oil pan threads. 	<ul style="list-style-type: none"> Ensure the plug is started by hand and threads smoothly. Do not force it. Verify the plug is the correct model for your vehicle (DP060-LINCOLN-17 for Lincoln Nautilus 2019-2026 2.0L 4-Cylinder). Inspect oil pan threads for damage.


7. SPECIFICATIONS

Attribute	Detail
Brand	Votex
Model Number	DP060-LINCOLN-17
Material	304 Stainless Steel
Magnet Type	High-Temperature N48 Grade Neodymium
Magnet Temperature Rating	Up to 150°C (302°F)
Magnet Holding Strength	Over 2.2 lbs
Included Accessory	Aluminum Crush Washer (single-use)
Wrench Size	15mm
Item Weight	2.08 ounces
Package Dimensions	3 x 3 x 1 inches
Manufacturing Location	Wisconsin, USA



Our Durable 304
Stainless Steel

Their Choice



**DURABLE DESIGN
RUST-FREE
PERFORMANCE**

Our 304 stainless steel plug guards against rust, offering reliable durability.

Image 7.1: Visual representation of the Votex drain plug's dimensions and a comparison highlighting its rust-free 304 stainless steel construction versus a rusted alternative.

8. WARRANTY AND SUPPORT

Votex is a family-run business committed to producing high-quality automotive parts. While specific warranty details are not provided in this manual, Votex stands behind the quality and durability of its products.

For product support, inquiries, or to purchase replacement crush washers (B07ZRY3KVP), please refer to the contact information provided with your purchase or visit the official Votex brand page on Amazon.