

Origem T670W

Origem T670W Trail Camera User Manual

Model: T670W

1. INTRODUCTION

This manual provides detailed instructions for the setup, operation, maintenance, and troubleshooting of your Origem T670W Trail Camera. Please read this manual thoroughly before using the camera to ensure optimal performance and longevity. The Origem T670W is designed for wildlife monitoring, hunting, and security applications, featuring high-resolution imaging, rapid trigger speed, and robust weather resistance.

2. PRODUCT OVERVIEW

2.1 Package Contents

- Origem T670W Trail Camera
- Mounting Strap
- USB Cable
- Mounting Screw Kit
- User Manual (this document)
- 64GB Micro SD Card

2.2 Camera Components

Familiarize yourself with the camera's external and internal components.



Image 2.2.1: Front view of the Origem T670W Trail Camera, showing the lens, PIR sensors, and control panel, alongside a Micro SD card and WiFi symbol.

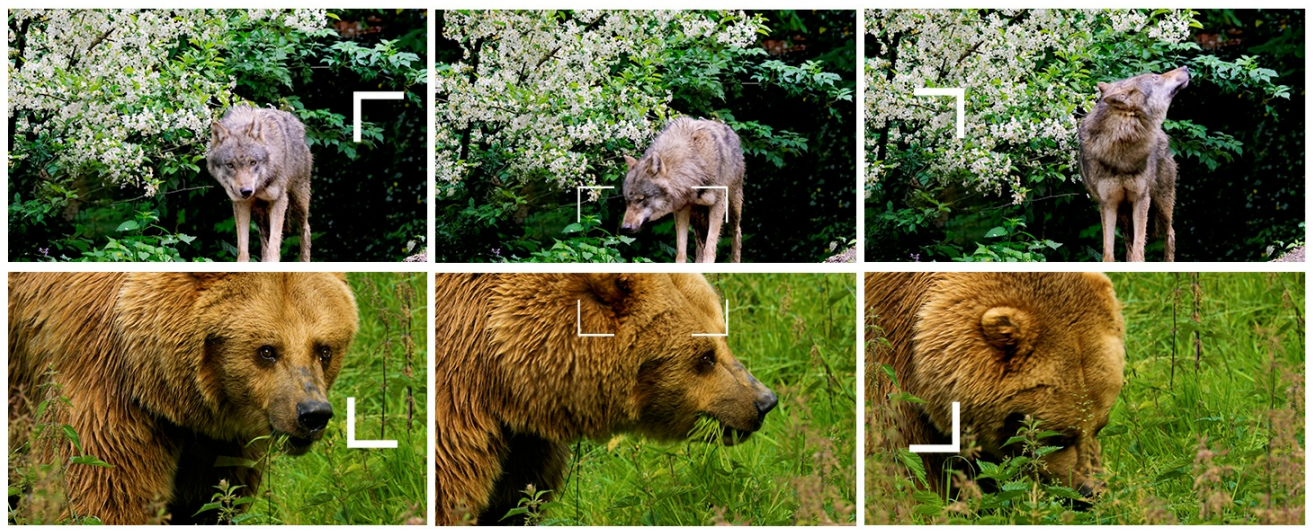


Image 2.2.2: Internal view of the camera, displaying the LCD screen, navigation buttons, and the power switch with ON, SETUP, and OFF positions.

3. SETUP

3.1 Battery Installation

1. Open the camera housing latches and open the front cover.
2. Locate the battery compartment at the bottom of the camera.
3. Insert 8 AA batteries (not included) according to the polarity markings (+/-) inside the compartment. For optimal performance and extended operation, use high-quality alkaline batteries. Rechargeable batteries are not recommended for primary power.
4. Close the battery compartment securely.

3.2 Micro SD Card Installation

1. Ensure the camera is powered OFF.
2. Locate the Micro SD card slot on the side of the camera (refer to Image 2.2.1).
3. Insert the provided 64GB Micro SD card into the slot with the gold contacts facing the back of the camera until it clicks into place. The camera supports Micro SD cards up to 512GB.
4. To remove, push the card in until it clicks, then release, and it will eject.

**MASSIVE
STORAGE
FOR LONG-TERM
MONITORING**



Supports Up to 512GB

**64GB Pre-Installed |
Expandable to 512GB**



64GB Included



Image 3.2.1: A Micro SD card and the included accessories, such as a mounting strap, USB cable, and screw kit.

3.3 Mounting the Camera

The camera can be mounted using the included strap or the screw kit.

1. **Strap Mounting:** Thread the provided mounting strap through the slots on the back of the camera. Secure the camera to a tree or pole at the desired height and angle.
2. **Screw Mounting:** Use the included screw kit to attach the camera to a wall or other flat surface. Ensure the mounting surface is stable.

4K ULTRA HD & 64MP WILDLIFE CAMERA



Image 3.3.1: The trail camera mounted on a tree, demonstrating its use in a natural environment to capture wildlife.

3.4 Initial Power On and Formatting SD Card

1. Slide the power switch from OFF to the **SETUP** position. The internal LCD screen will turn on.
2. Navigate to the 'Format SD Card' option in the menu using the navigation buttons.
3. Select 'Yes' to format the Micro SD card. This prepares the card for use with the camera and ensures proper function.
4. Set the current date and time in the camera's settings for accurate timestamps on your recordings.

4. OPERATING INSTRUCTIONS

4.1 Basic Operation Modes

The camera has three main operating modes:

- **Photo Mode:** Captures still images when triggered.
- **Video Mode:** Records video clips when triggered.

- **Photo + Video Mode:** Captures a still image followed by a video clip when triggered.

You can select the desired mode through the camera's menu settings.

4.2 Menu Settings

In **SETUP** mode, use the navigation buttons (UP, DOWN, LEFT, RIGHT, OK, MENU) to adjust camera settings. Key settings include:

- **Mode:** Photo, Video, Photo+Video.
- **Photo Resolution:** Up to 64MP.
- **Video Resolution:** Up to 4K.
- **PIR Sensitivity:** Low, Medium, High. Adjust based on environment to prevent false triggers.
- **Trigger Interval:** Time delay between triggers.
- **Time-Lapse:** Set intervals for continuous recording without PIR trigger.
- **Audio Recording:** Enable or disable audio capture with video.
- **WiFi:** Enable WiFi for app connectivity.

4.3 Using the "TrailCam Go" App

The Origen T670W features Smart WiFi control via the "TrailCam Go" app, allowing remote access within 20 meters.

1. Download the "TrailCam Go" app from your smartphone's app store.
2. Enable WiFi on your camera through the menu settings.
3. On your smartphone, connect to the camera's WiFi network (SSID and password will be displayed on the camera screen).
4. Open the "TrailCam Go" app. You can now view live footage, adjust settings, and download captured media without physically accessing the camera.

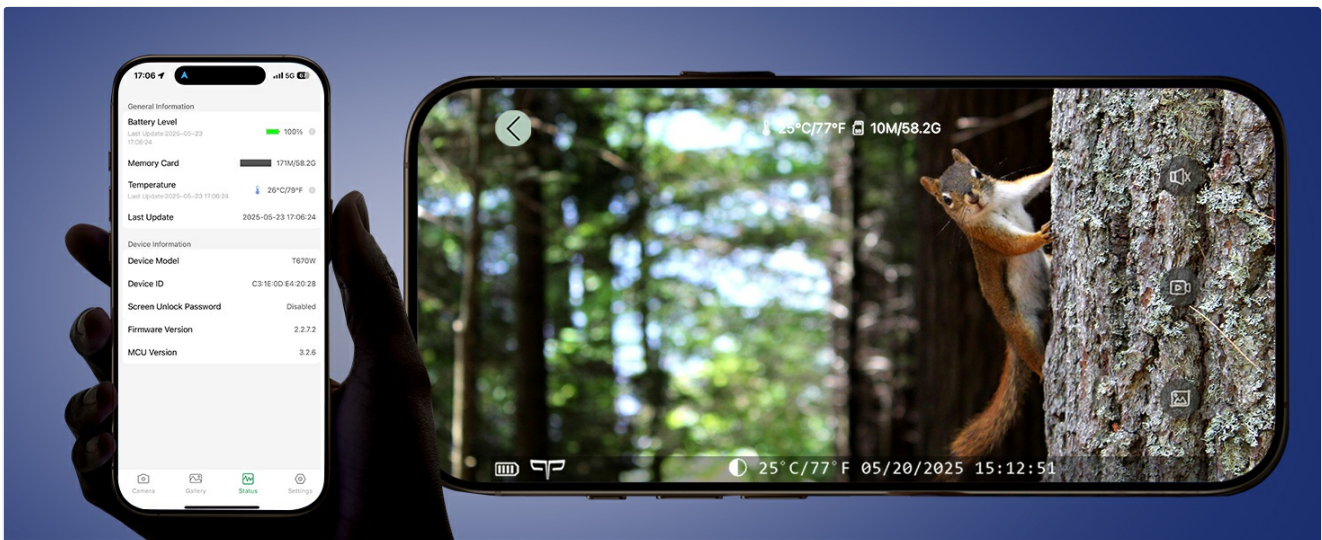


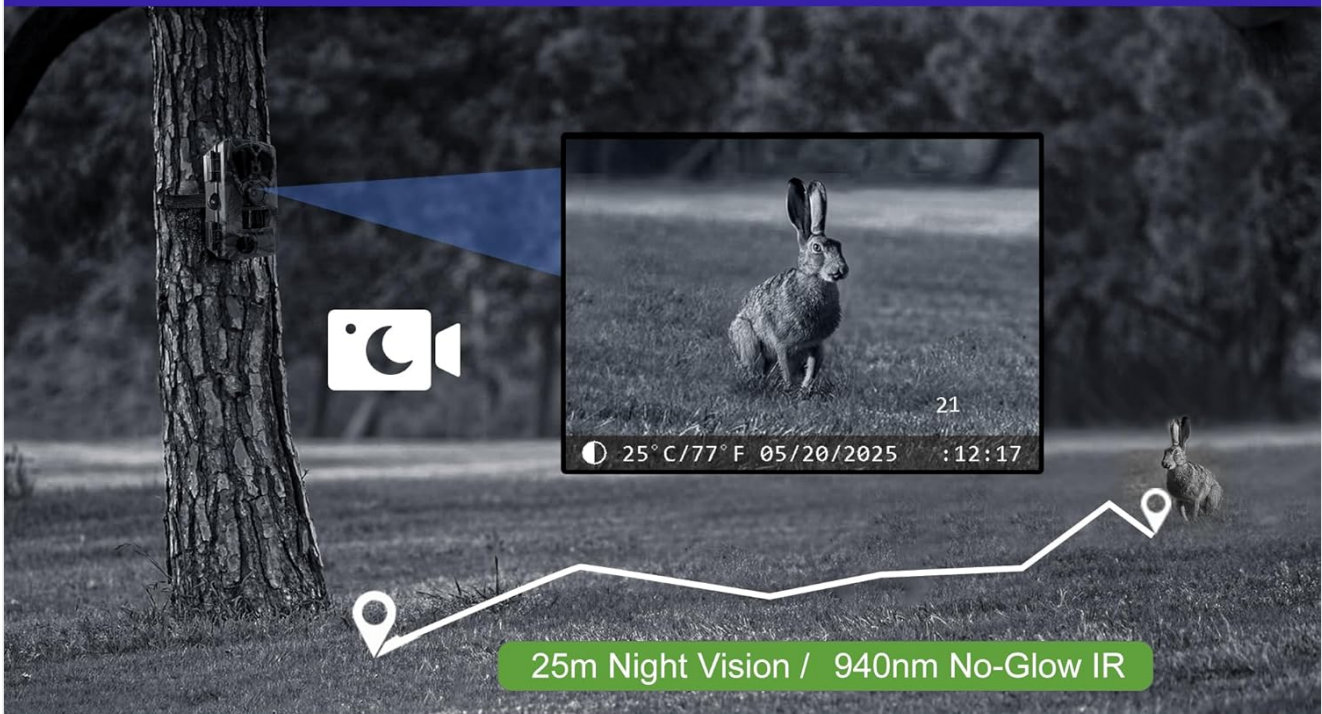
Image 4.3.1: A smartphone displaying the "TrailCam Go" app, showing camera information and a live preview of the camera's view.

4.4 Night Vision Operation

The camera utilizes 940nm No-Glow IR technology for invisible night vision up to 25 meters. This ensures that the camera operates undetected by wildlife or intruders in complete darkness.

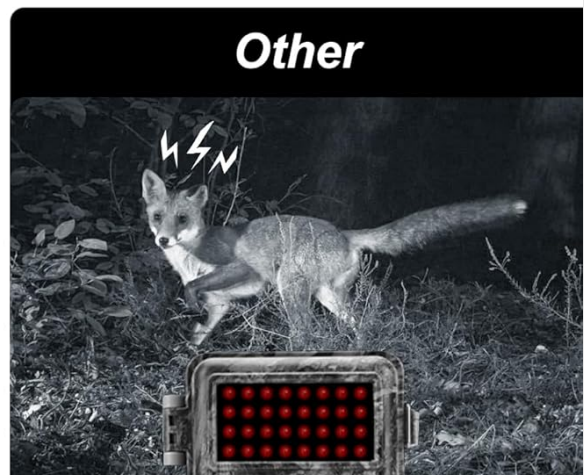
INVISIBLE NIGHT VISION

Undetectable by Animals,
Clear Footage in Darkness



Origem

VS



Other

Image 4.4.1: A visual comparison highlighting the Origem camera's invisible 940nm night vision, showing a clear image of a rabbit without any visible IR glow, contrasted with a competitor's camera showing a visible red glow and a fox.

5. MAINTENANCE

5.1 Cleaning

- Wipe the camera lens and PIR sensors with a soft, dry cloth to remove dust and dirt.
- For stubborn marks, use a slightly damp cloth and then dry thoroughly. Avoid abrasive cleaners.
- Ensure the anti-fog coating on the lens remains clear.

5.2 Battery Replacement

Replace all 8 AA batteries when the low battery indicator appears on the screen or in the app. Always replace with a fresh set of high-quality alkaline batteries.

5.3 SD Card Management

Regularly format the Micro SD card to maintain optimal performance and prevent data corruption. Back up important

files before formatting.

5.4 Storage

When not in use, store the camera in a cool, dry place. Remove batteries if storing for extended periods to prevent leakage.

6. TROUBLESHOOTING

- **Camera not powering on:** Check battery installation and ensure batteries are fresh. Verify the power switch is in the ON or SETUP position.
- **No images/videos captured:** Ensure the SD card is properly inserted and formatted. Check PIR sensitivity settings and trigger interval. Verify the camera is in ON mode, not SETUP or OFF.
- **Poor image/video quality:** Clean the lens and ensure it's free of obstructions. Check resolution settings. Ensure the camera is stable and not subject to excessive movement.
- **WiFi connection issues:** Ensure WiFi is enabled on the camera and your smartphone is within 20 meters. Restart both the camera and your phone.
- **False triggers:** Reduce PIR sensitivity. Ensure the camera is not pointed at heat sources or moving branches that could cause false detections.

7. SPECIFICATIONS

Feature	Specification
Model	T670W
Photo Resolution	Up to 64MP
Video Resolution	Up to 4K
Trigger Speed	0.1 seconds
PIR Detection Angle	120°
Night Vision Range	25 meters (940nm No-Glow IR)
Water Resistance	IP66 Waterproof
Operating Temperature	-30°C to 70°C
Storage	Micro SD card, up to 512GB (64GB included)
Power Source	8x AA batteries (not included) or external 6V solar panel (3.5*1.35mm plug)
Connectivity	Wi-Fi, Bluetooth
Dimensions (L x W x H)	15.75 x 10.16 x 5.08 cm
Weight	550 g

8. WARRANTY INFORMATION

The Origem T670W Trail Camera comes with a **1-year warranty** from the date of purchase. This warranty covers

manufacturing defects and workmanship. It does not cover damage caused by misuse, accidents, unauthorized modifications, or normal wear and tear. Please retain your proof of purchase for warranty claims.

9. CUSTOMER SUPPORT

For technical assistance, troubleshooting, or warranty inquiries, please contact Origem customer support through the retailer's platform or the official Origem website. Please have your product model number (T670W) and purchase details ready when contacting support.

