



[Manuals.plus](#) /

> [Alloyman](#) /

> Alloyman 2-in-1 Telescopic Cordless Pole Hedge Trimmer and Pole Saw Instruction Manual

Alloyman LLGZJ-DM-006

Alloyman 2-in-1 Telescopic Cordless Pole Hedge Trimmer and Pole Saw Instruction Manual

Model: LLGZJ-DM-006

INTRODUCTION

Thank you for choosing the Alloyman 2-in-1 Telescopic Cordless Pole Hedge Trimmer and Pole Saw. This versatile tool is designed for efficient tree trimming and shrub pruning, offering both an 8.6-inch pole saw and a 16-inch hedge trimmer attachment. This manual provides essential information for safe operation, assembly, maintenance, and troubleshooting to ensure optimal performance and longevity of your tool.



2 IN 1 TELESCOPIC CORELESS Pole Hedge Trimmer & Pole Saw

The Alloyman 2-in-1 tool in use as both a hedge trimmer and a pole saw.

SAFETY INFORMATION

General Safety Warnings

- Always wear appropriate personal protective equipment (PPE) including safety glasses, gloves, and hearing protection when operating the tool.
- Keep children and bystanders away while operating a power tool. Distractions can cause you to lose control.
- Do not operate power tools in explosive atmospheres, such as in the presence of flammable liquids, gases, or dust.
- Maintain a firm grip on the tool with both hands during operation.
- Inspect the work area for hidden wires or obstacles before cutting.

Electrical Safety

- Use only the charger specified by the manufacturer. A charger that is suitable for one type of battery pack may create a risk

of fire when used with another battery pack.

- Prevent unintentional starting. Ensure the switch is in the off-position before connecting to battery pack, picking up or carrying the tool.
- Do not expose battery packs or tools to fire or excessive temperature. Exposure to fire or temperature above 130°C (265°F) may cause explosion.

Personal Safety

- Stay alert, watch what you are doing, and use common sense when operating a power tool.
- Dress properly. Do not wear loose clothing or jewelry. Keep your hair and clothing away from moving parts.
- Avoid accidental starting. Ensure the safety lock is engaged when not actively cutting.

PACKAGE CONTENTS

Verify that all items are present and in good condition upon opening the package:

- 16-inch Cordless Hedge Trimmer Attachment (x1)
- 8.6-inch Cordless Pole Saw Attachment (x1)
- Extension Pole (x1)
- 4.0Ah Batteries (x2)
- Charger (x1)
- Shoulder Straps (x1)
- Instruction Manual (x1)

20V MAX

2 IN 1 POLE HEDGE TRIMMER AND POLE SAW

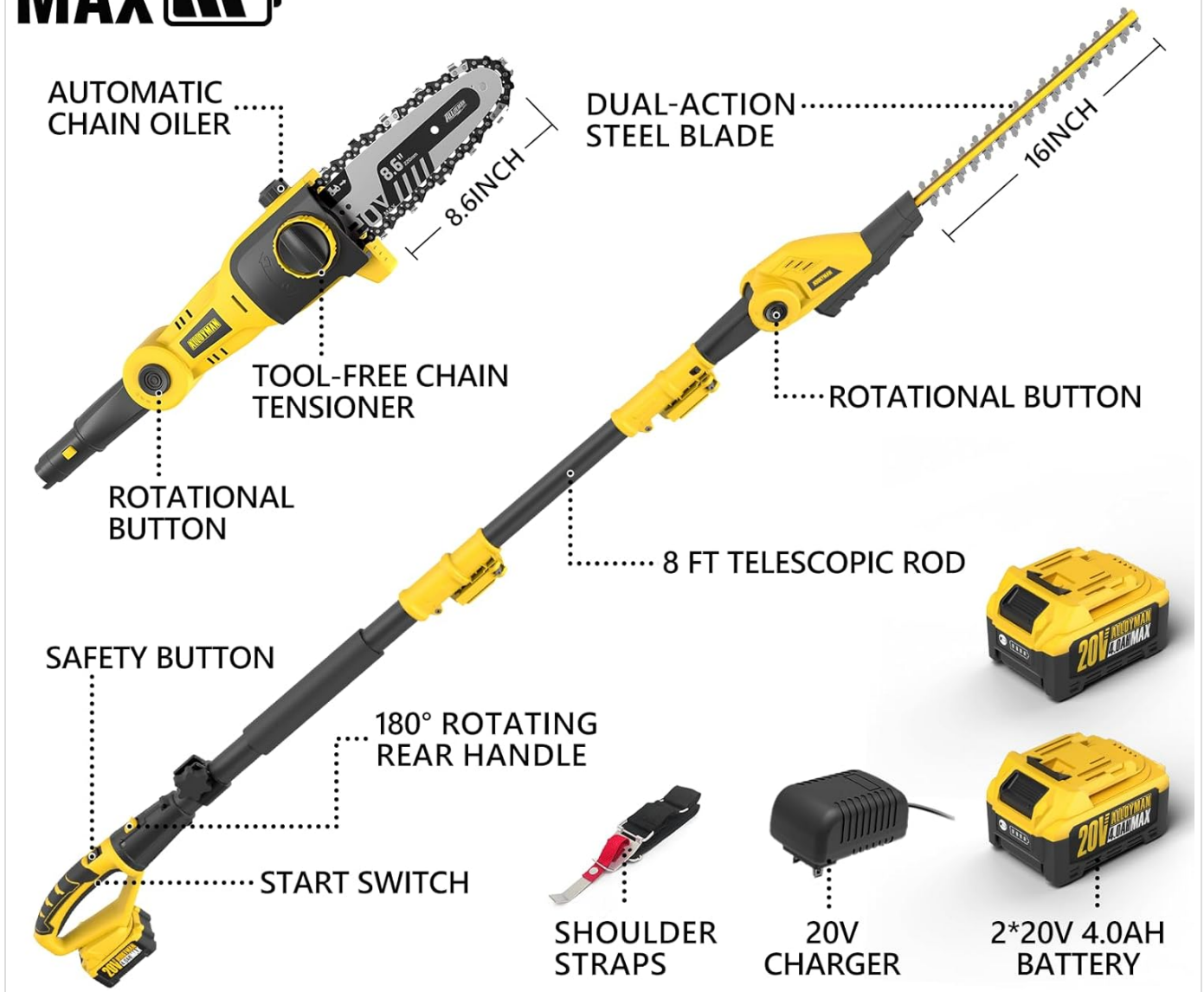


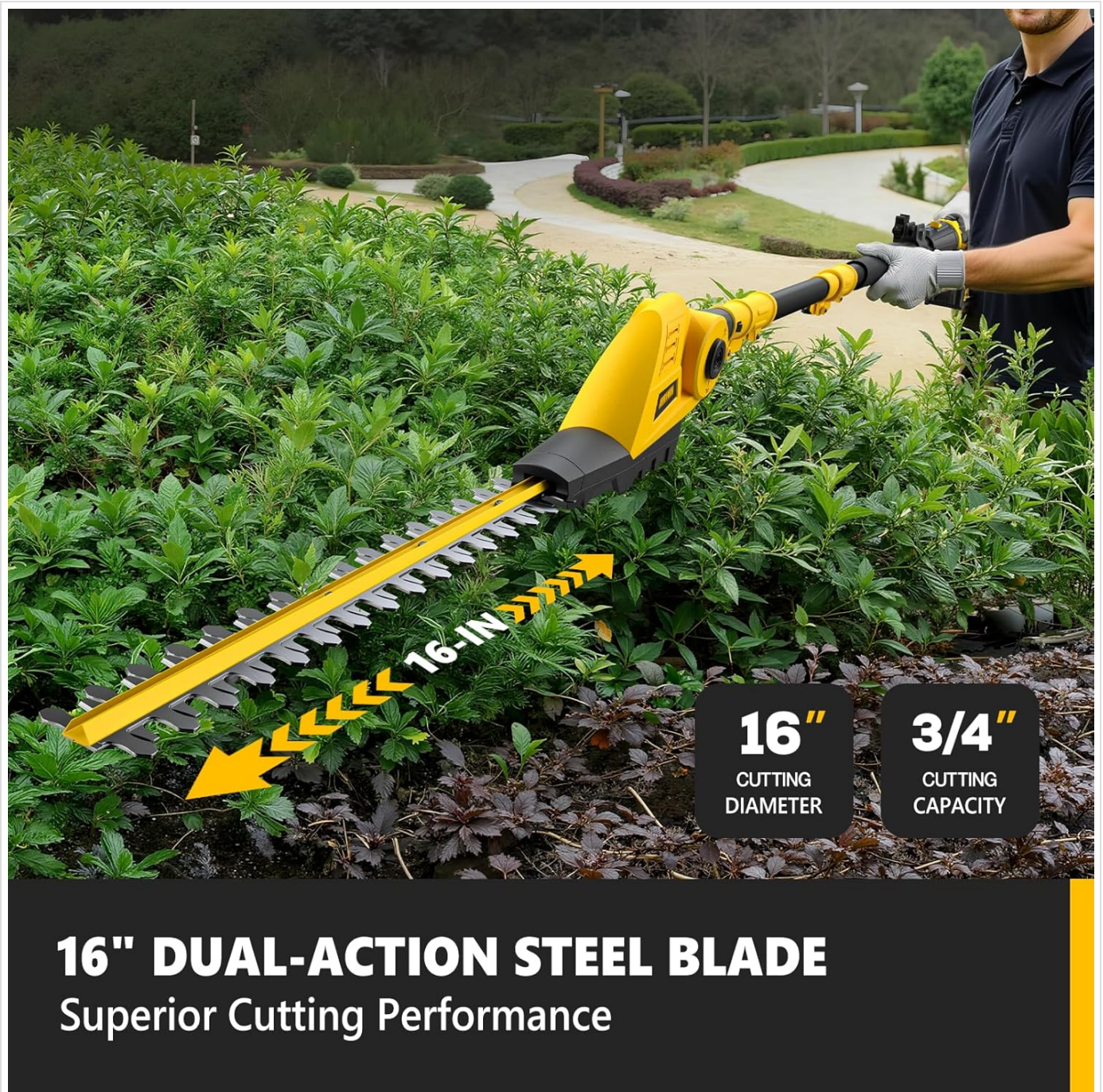
Diagram of included components.

PRODUCT FEATURES

- **2-in-1 Versatility:** Easily switch between an 8.6-inch pole saw head and a 16-inch hedge trimmer attachment to meet various pruning needs.
- **16-inch Hedge Trimmer:** Features hardened steel dual-action blades capable of cutting branches up to 3/4 inch thick with a 1400 SPM (strokes per minute) speed.
- **8.6-inch Pole Saw:** Equipped with a steel blade and an 18 feet per second chain speed, designed for efficient cutting of tree branches.
- **Telescopic Pole:** The extension pole allows for an extended height, providing a total reach of up to 12 feet (based on a 5.5-foot tall person holding the pole at shoulder height).
- **180° Rotating Rear Handle:** Enhances maneuverability for reaching high branches, tight corners, and flower beds, reducing user fatigue.
- **Adjustable Angle Head:** The pole saw offers three cutting positions (0°, 15°, 30°), and the hedge trimmer head rotates up

to 135° for precise cuts in various orientations.

- **Automatic Chain Oiler:** Ensures continuous lubrication of the pole saw chain, extending tool life and maintaining optimal performance.
- **Tool-Free Chain Tensioner:** Allows for quick and easy chain adjustments on the pole saw without additional tools.
- **High Capacity Batteries:** Includes two 4.0Ah Li-ion batteries with overload and temperature protection, providing approximately 30 minutes of runtime per battery.



The 16-inch dual-action steel blade of the hedge trimmer.

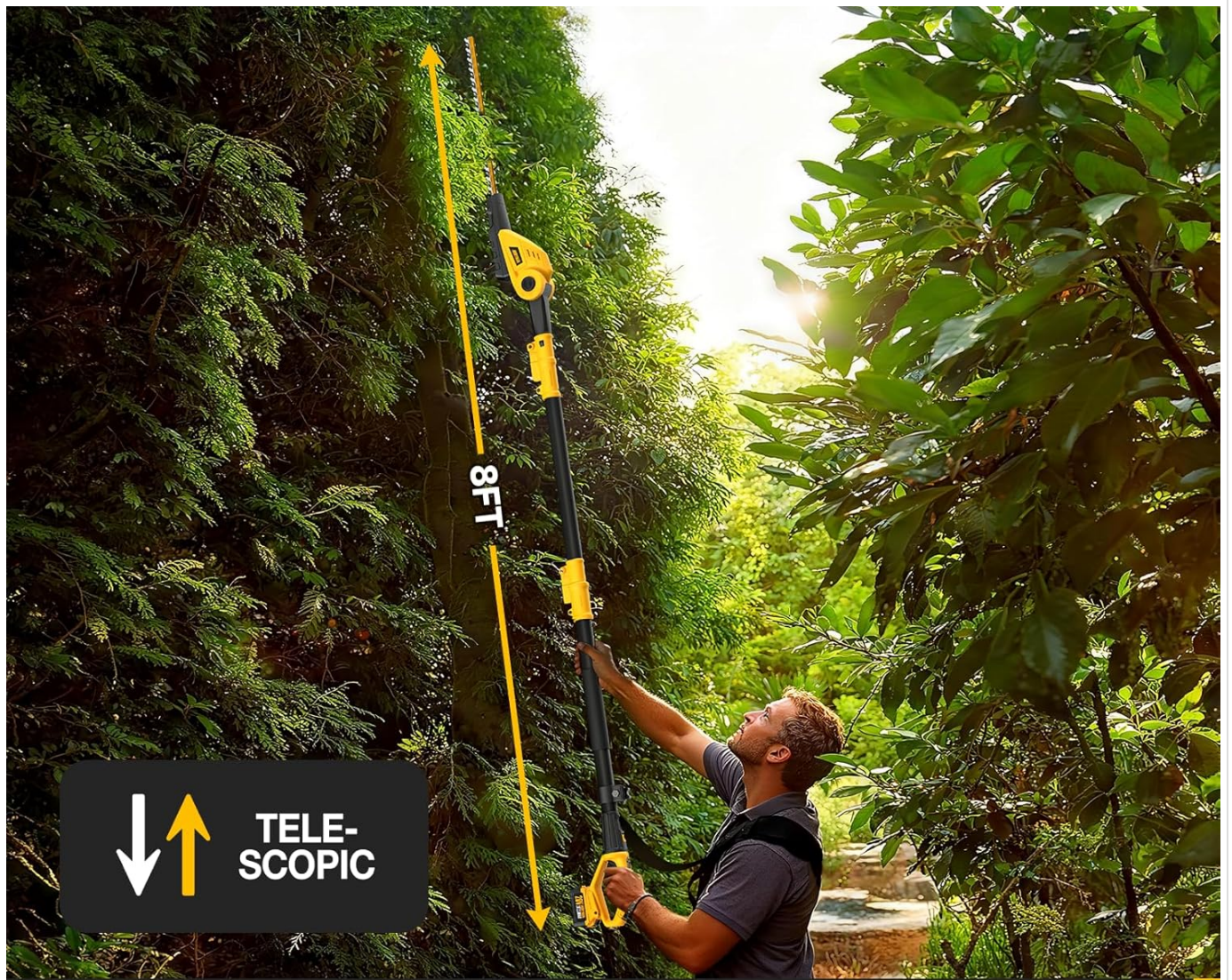


4X4
UP TO
140
— CUTS —
2* Battery 

8.6" MAX CUTTING DIAMETER

Delivers Powerful, Efficient Cutting Results

The 8.6-inch pole saw attachment in action.



REACH UP TO 12FT
Easily Manage High-Reach Trimming

Telescopic pole extends reach for high trimming.



180° ROTATING REAR HANDLE

Improve Trimming Flexibility

The 180° rotating rear handle for enhanced flexibility.



3 ADJUSTABLE CUTTING ANGLES



ADJUSTABLE POLE HEDGE TRIMMER HEAD DESIGN



TOOL-FREE CHAIN TENSIONER & AUTOMATIC CHAIN OILER



DUAL-ACTION BLADE

Adjustable head design, chain tensioner, and automatic oiler.



2*4.0AH

2 X 30 Mins

ALLOYMAN



OTHER

VS



2.0AH

15 Mins

2*4000mAh CAPACITY BATTERY
Strong Power, Long Battery Life

Two 4.0Ah high-capacity batteries for extended use.

SETUP

Assembly

1. Attach the desired cutting head (hedge trimmer or pole saw) to the extension pole. Ensure it clicks securely into place.
2. Connect the handle section to the other end of the extension pole, ensuring a firm connection.
3. Attach the shoulder strap to the designated points on the tool for comfortable and balanced operation.

Battery Installation

1. Ensure the battery is fully charged before first use. Insert the battery into the battery slot on the tool handle until it locks into place.
2. To remove the battery, press the release button and slide the battery out.

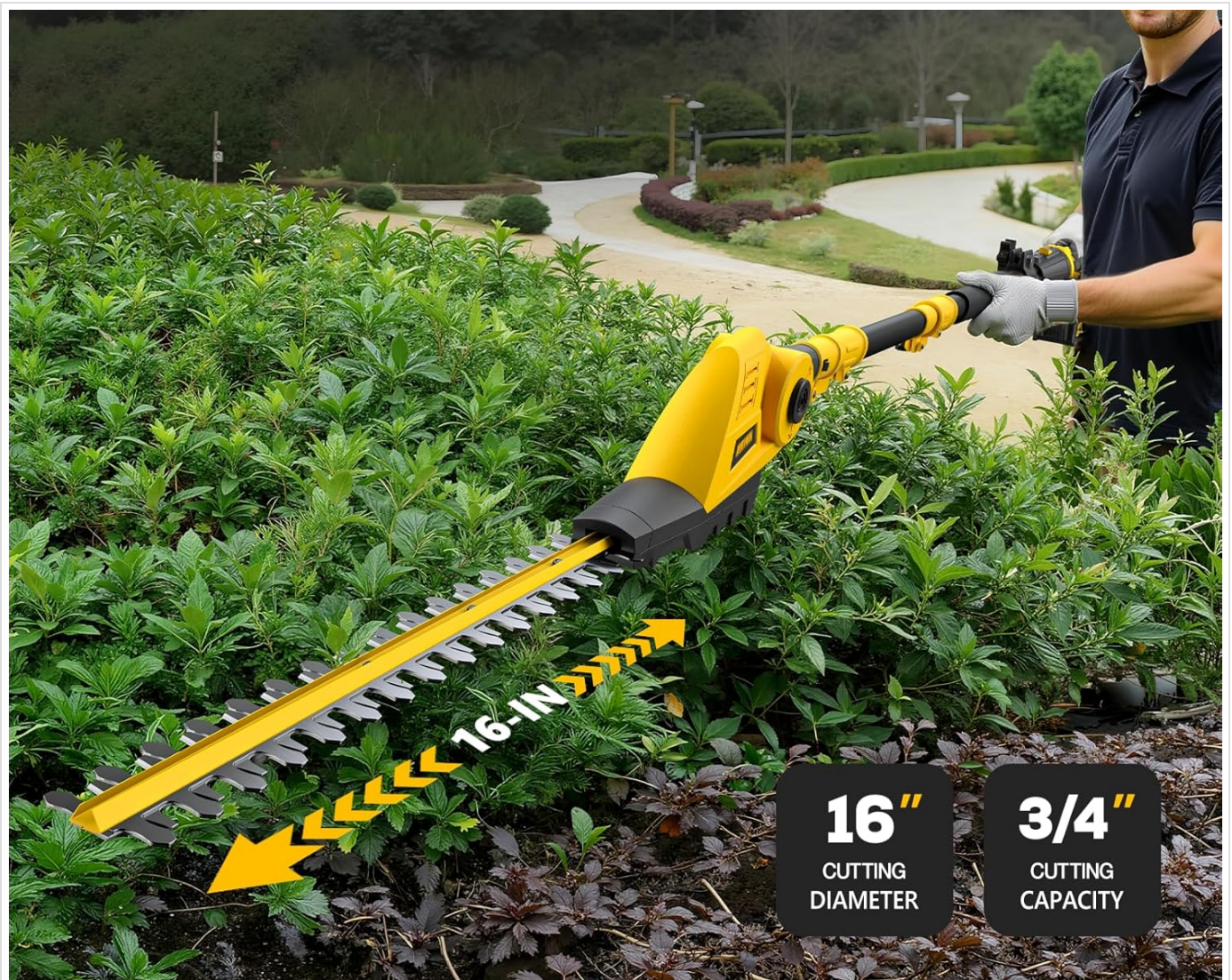
OPERATING INSTRUCTIONS

General Operation

- Before starting, ensure the work area is clear of debris and bystanders.
- Always hold the tool firmly with both hands.
- To start the tool, press the safety lock button and then squeeze the trigger switch. Release the trigger to stop.

Using the Hedge Trimmer

- For optimal results, use a sweeping motion, cutting small amounts of material at a time.
- Adjust the 135° rotating trimmer head to achieve desired angles for hedges and shrubs.
- Utilize the 180° rotating rear handle for comfortable operation in various positions, reducing strain.



16" DUAL-ACTION STEEL BLADE
Superior Cutting Performance

Operating the hedge trimmer attachment.

Using the Pole Saw

- Ensure the chain is properly tensioned before each use. Refer to the 'Maintenance' section for tool-free chain tensioning.
- Apply chain oil to the reservoir for automatic lubrication.
- Select one of the three adjustable cutting angles (0°, 15°, 30°) to best suit the branch you are cutting.
- Allow the saw to reach full speed before engaging the branch. Make a small undercut first, then cut from the top to prevent pinching.



Operating the pole saw attachment.

Your browser does not support the video tag.

Official product video demonstrating the assembly, features, and operation of the Alloyman 2-in-1 Telescopic Cordless Pole Hedge Trimmer and Pole Saw, including its use as both a hedge trimmer and a pole saw.

MAINTENANCE

Blade and Chain Care

- **Hedge Trimmer Blades:** After each use, clean the blades of sap and debris. Apply a light coat of machine oil to prevent rust.
- **Pole Saw Chain:** Regularly check the chain for sharpness and tension. Use the tool-free tensioning system to adjust as needed. Ensure the automatic oiler reservoir is filled with appropriate chain lubricant.

Battery Care

- Store batteries in a cool, dry place away from direct sunlight and extreme temperatures.
- Do not store batteries in a discharged state for extended periods. Charge them periodically if not in use.
- Use only the provided charger for charging the batteries.

TROUBLESHOOTING

Problem	Possible Cause	Solution
Tool does not start	Battery not charged or improperly inserted; Safety lock not engaged; Trigger not pressed fully.	Charge battery and ensure it is fully inserted; Engage safety lock before pressing trigger; Press trigger completely.
Reduced cutting performance	Blades/chain dull or dirty; Chain tension incorrect; Battery low.	Clean and sharpen blades/chain; Adjust chain tension; Recharge or replace battery.
Excessive vibration	Loose components; Damaged blade/chain.	Check all connections and tighten; Inspect blade/chain for damage and replace if necessary.
Pole saw chain not oiling	Oil reservoir empty; Oil port clogged.	Refill oil reservoir; Clean oil port.

SPECIFICATIONS

Feature	Detail
Brand	Alloyman
Model Number	LLGZJ-DM-006
Power Source	Battery Powered
Hedge Trimmer Blade Length	16 Inches
Hedge Trimmer Cutting Capacity	Up to 3/4 inch
Pole Saw Blade Length	8.6 Inches
Chain Speed	18 feet per second
Battery Type	20V 4.0Ah Li-ion
Product Dimensions (L x W x H)	14"L x 5"W x 15"H (compact)

Feature	Detail
Max Extended Height	12 feet (user dependent)

WARRANTY AND SUPPORT

The Alloyman 2-in-1 Telescopic Cordless Pole Hedge Trimmer and Pole Saw comes with a 1-year tool warranty. For warranty claims, technical support, or replacement parts, please contact Alloyman customer service through their official channels. Keep your purchase receipt as proof of purchase.