

VSTARCAM CS995DR

VSTARCAM CS995DR Indoor Security Camera User Manual

Model: CS995DR

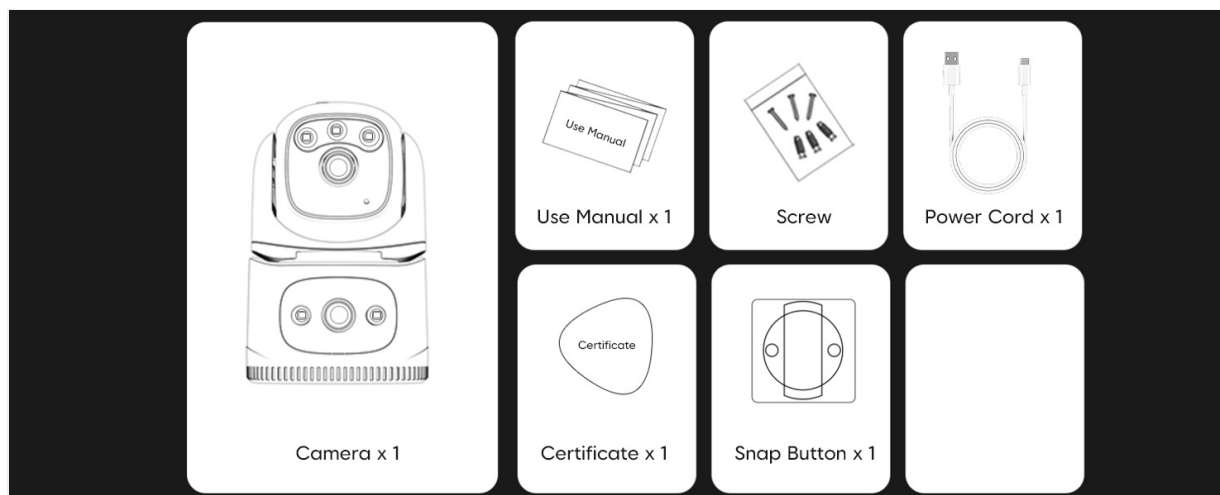
1. INTRODUCTION

This manual provides detailed instructions for the installation, operation, and maintenance of your VSTARCAM CS995DR Indoor Security Camera. Please read this manual thoroughly before using the product to ensure proper functionality and safety. The VSTARCAM CS995DR features dual cameras, 2K QHD resolution, 5x digital zoom, 360° panoramic coverage, AI human/pet tracking, full-color night vision, and two-way audio for comprehensive indoor monitoring.

2. PACKAGE CONTENTS

Verify that all items listed below are included in your package. If any items are missing or damaged, please contact customer support.

- Camera Body x 1
- User Manual x 1
- Screw Bag x 1
- Power Cord x 1
- Certificate x 1
- Snap Button x 1



3. PRODUCT OVERVIEW

The VSTARCAM CS995DR is an indoor security camera designed for comprehensive surveillance. It features a dual-lens system, with one fixed camera and one tracking camera, providing a wide field of view and detailed monitoring capabilities. The camera supports pan and tilt movements for 360-degree coverage.



Figure 3.1: VSTARCAM CS995DR Camera

4. SETUP

4.1 Initial Power-On

1. Connect the provided power cord to the camera's power input port.
2. Plug the power adapter into a standard electrical outlet.
3. Wait for the camera to power on and initiate its self-check sequence. This may take a few moments.

4.2 App Download and Account Registration

1. Download the official VSTARCAM application from your smartphone's app store (available for Android and iOS).
2. Open the app and follow the on-screen instructions to create a new user account or log in if you already have one.

4.3 Connecting to Wi-Fi

The camera supports 2.4G Wi-Fi connectivity. Ensure your smartphone is connected to a 2.4G Wi-Fi network during the setup process.

1. In the VSTARCAM app, tap the "Add Device" or "+" icon.
2. Select your camera model or scan the QR code located on the camera.
3. Follow the in-app prompts to connect the camera to your 2.4G Wi-Fi network. This may involve entering your Wi-Fi password or scanning a QR code generated by the app with the camera's lens.
4. The camera will indicate a successful connection, usually with a voice prompt or LED indicator change.

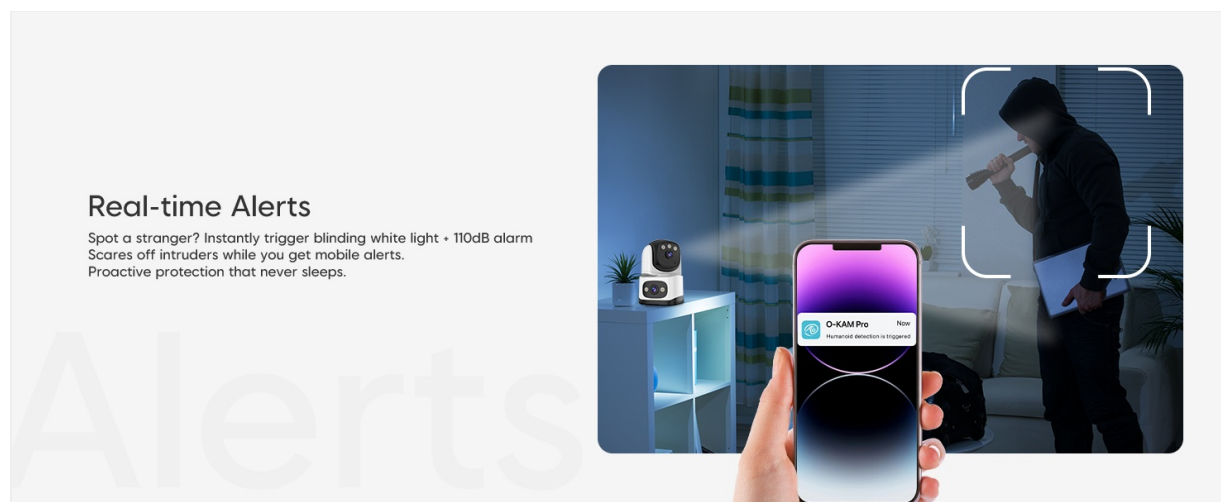


Figure 4.1: Connection Methods

4.4 Mounting Options

The VSTARCAM CS995DR can be placed on a tabletop, mounted on a wall, or attached to a ceiling. Choose a location that provides the desired viewing angle and is within range of your Wi-Fi network.

- **Tabletop Placement:** Simply place the camera on a flat, stable surface.
- **Wall/Ceiling Mounting:** Use the provided screw bag and snap button to securely attach the camera to a wall or ceiling. Ensure the mounting surface is strong enough to support the camera's weight.

Smart AI Detection & Tracking

AI instantly differentiates humans/pets and auto-tracks movement. Our algorithm ensures this indoor camera never misses important moments.

*Local AI No Monthly Fee

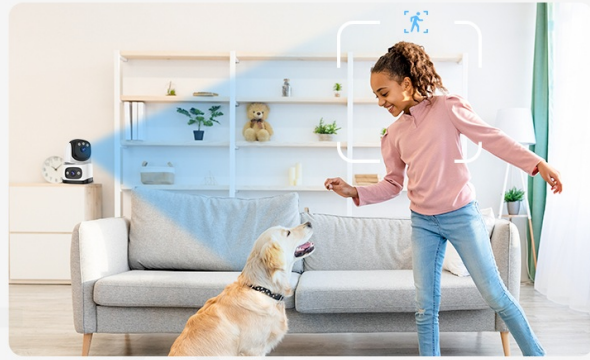


Figure 4.2: Installation Options

5. OPERATING INSTRUCTIONS

5.1 Live View and Recording

Access the live feed from your camera through the VSTARCAM app. The 2K QHD resolution provides clear and detailed video.

Two-Way Audio & Sharing

Talk & Share, Multi-User Pet Camera
Indoor with Phone App.



Figure 5.1: 2K QHD Clarity

5.2 Pan, Tilt, and 360° Coverage

Utilize the pan and tilt controls within the app to adjust the camera's viewing angle. The dual-lens system provides a full 360° panoramic view, eliminating blind spots.

Dual-Lens Panoramic Coverage

360° Dual Cameras, No Blind Spots
in Your Indoor Security Camera



Figure 5.2: Dual-Lens Panoramic Coverage

5.3 5x Digital Zoom

Pinch to zoom on the live feed to inspect finer details with the 5x digital zoom functionality.

Advanced Zoom Capabilities

5× Zoom on Wireless Indoor Camera,
Track From Any Angle



Figure 5.3: 5x Zoom Functionality

5.4 Full Color Night Vision

The camera automatically switches to night vision in low-light conditions. Advanced infrared sensors enable full-color night vision, providing clear and detailed footage even in darkness.

Exceptional Full Color Night Vision

Color Night Vision | WiFi Indoor Camera
WirelessDay or Night.

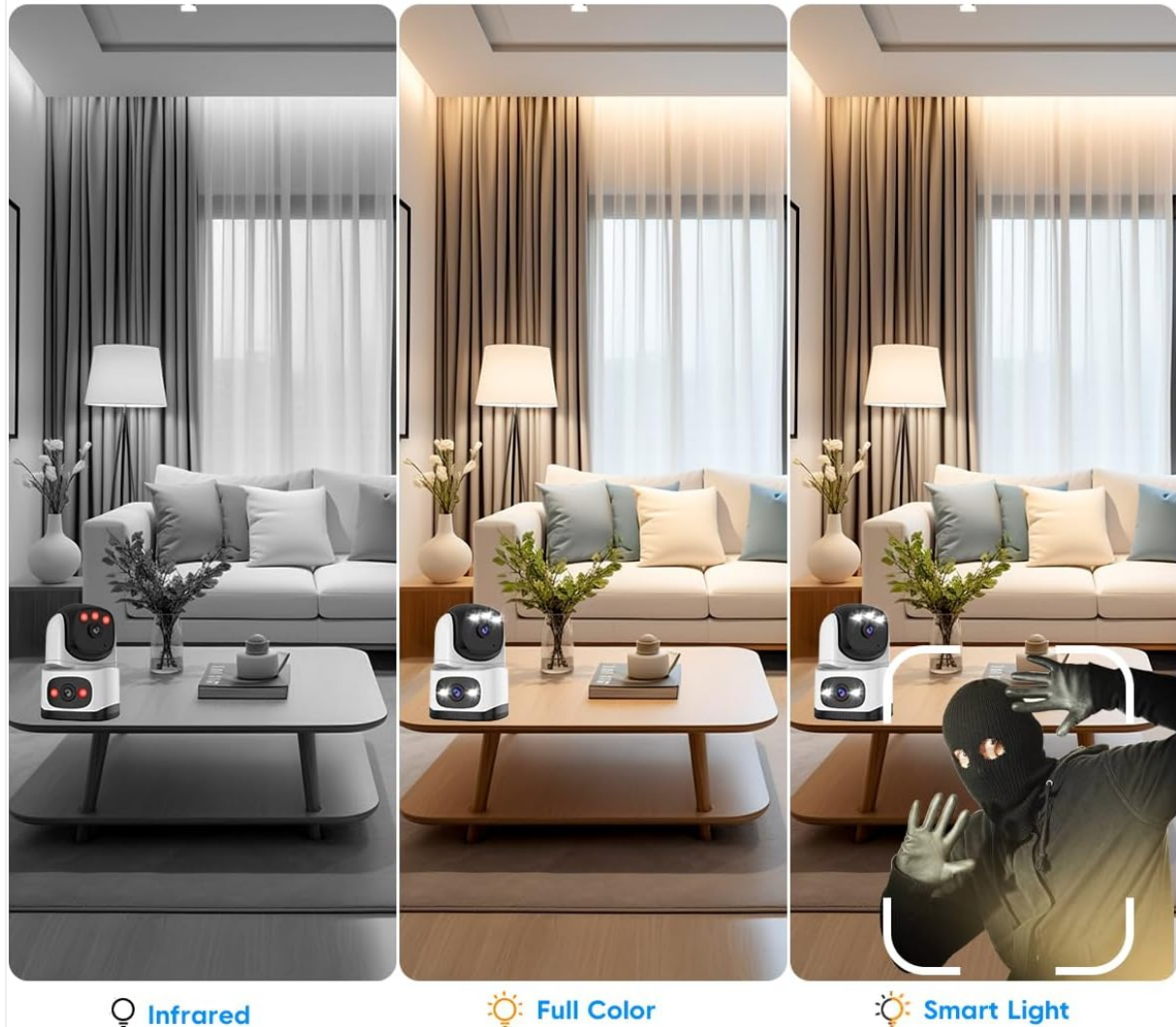


Figure 5.4: Full Color Night Vision Modes

5.5 AI Detection and Tracking

Enable AI-powered motion detection and tracking in the app settings. The camera can automatically identify and follow humans or pets, sending alerts to your device.

Intelligent Tracking

AI Auto-Tracking, Smart Cameras
for Home Security Indoor.



Figure 5.5: AI Intelligent Tracking

5.6 Two-Way Audio

Use the built-in microphone and speaker to communicate through the camera. This feature allows you to speak to individuals near the camera or comfort pets.

Superior Clarity 2K QHD

2K QHD Clarity | See Every Detail
in Your Home Cameras Indoor.



Figure 5.6: Two-Way Audio Communication

5.7 Real-time Alerts

Configure alert settings in the app to receive notifications on your smartphone when motion or specific events are detected. The camera can also trigger a blinding white light and a 110dB alarm.

Easily install Wherever You'd Like

Place on shelves, mount on walls, or attach to ceilings
Each installation method is simple, install wherever you wish.

Install



Figure 5.7: Real-time Motion Alerts

5.8 Storage Options

The camera supports two storage methods for recorded footage:

- **Micro SD Card:** Insert a Micro SD card (up to 256GB, not included) into the designated slot on the camera for local 24/7 recording.
- **Cloud Storage:** A subscription-based cloud storage service is available, offering a 7-day free trial for encrypted cloud recording.

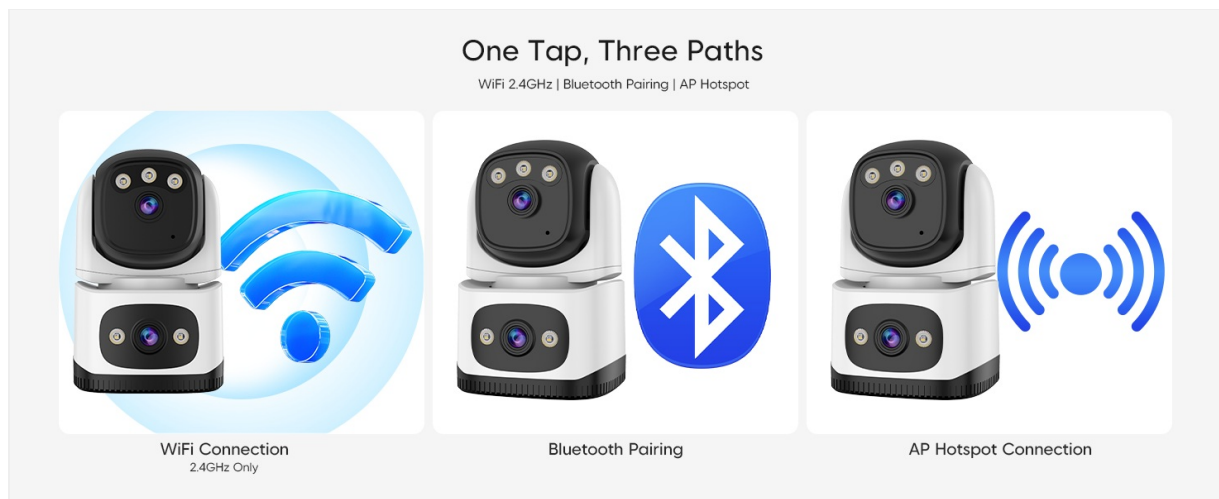


Figure 5.8: Storage Methods

6. MAINTENANCE

6.1 Cleaning the Camera

To maintain optimal image quality, regularly clean the camera lenses and body. Use a soft, dry cloth to gently wipe away dust and smudges. Avoid using harsh chemicals or abrasive materials that could damage the lenses or surface.

6.2 Firmware Updates

Periodically check the VSTARCAM app for available firmware updates. Keeping your camera's firmware up-to-date ensures access to the latest features, security enhancements, and performance improvements. Follow the in-app instructions for firmware updates.

7. TROUBLESHOOTING

If you encounter issues with your VSTARCAM CS995DR camera, refer to the following common problems and solutions:

Problem	Possible Cause	Solution
Camera not connecting to Wi-Fi	Incorrect Wi-Fi password; 5G Wi-Fi network; camera too far from router.	Ensure correct 2.4G Wi-Fi password. Move camera closer to router. Restart camera and router.
Poor image quality	Dirty lens; insufficient lighting; network bandwidth issues.	Clean the camera lens. Ensure adequate lighting or check night vision settings. Verify stable Wi-Fi connection.
Motion alerts not received	Motion detection disabled; app notifications turned off; network issues.	Enable motion detection in app settings. Check phone notification settings for the VSTARCAM app. Ensure stable internet connection.
Cannot share camera access with family	Incorrect sharing procedure; app permissions.	Refer to the app's sharing guide. Ensure the recipient has the VSTARCAM app and an account. Verify sharing permissions are correctly set.
Camera stopped recording/alerts, prompts for software update repeatedly	Corrupted firmware; software bug.	Attempt a factory reset (refer to app for instructions). If issue persists after updating firmware, contact VSTARCAM support.

8. SPECIFICATIONS

Detailed technical specifications for the VSTARCAM CS995DR camera:

- Model Name:** Indoor camera
- Item Model Number:** CS995DR
- Indoor/Outdoor Usage:** Indoor
- Connectivity Technology:** Wi-Fi (2.4G), Ethernet
- Video Capture Resolution:** 1080p (Effective Video Resolution: 3, likely referring to 3MP for 2K QHD)
- Special Features:** Dual-Lens, PTZ Technology, 5x Zoom, Full Color Night Vision, Intelligent Tracking, Two-Way Audio
- Power Source:** Corded Electric (5 watts)
- Compatible Devices:** Smartphone (Android)
- Mounting Type:** Tabletop Mount
- Alert Type:** Motion Only
- Room Type:** Nursery
- Video Capture Format:** MPEG-4
- Product Dimensions:** 5 x 3 x 3 inches
- Item Weight:** 13.7 ounces
- Material:** Plastic

Color: White


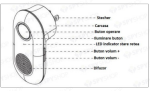



Batteries Required?: No

9. WARRANTY AND SUPPORT

For warranty information, please refer to the documentation included with your product or visit the official VSTARCAM website. If you require technical assistance or have questions not covered in this manual, please contact VSTARCAM customer support.

You can find more information and support resources by visiting the [VSTARCAM Store on Amazon](#).

Related Documents - CS995DR

	VStarcam C63S IP Camera FCC Test Report Official FCC Test Report for the VStarcam C63S IP camera by Shenzhen VStarcam Technology Co., Ltd, detailing compliance with FCC Part 15 regulations for its 2.4GHz Wi-Fi transceiver.
	VSTARCAM D2 Smart Video Doorbell - Manual de Utilizare și Ghid de Instalare Manual de utilizare complet pentru soneria video inteligentă VSTARCAM D2. Aflați despre caracteristici, instalare, configurare Wi-Fi, integrarea aplicației și depanare pentru soneria dvs. VSTARCAM D2.
	VStarcam IP Camera User Manual - Setup, Configuration, and Troubleshooting A comprehensive user manual for VStarcam IP cameras, detailing software download, account registration, network connection methods (Wi-Fi and LAN), password management, feature configuration (like white lights and motion detection), remote access, and common troubleshooting steps. Includes FAQs and service contact information.
	VSTARCAM Wi-Fi HD AI Video Doorbell User Manual User manual for the VSTARCAM Wi-Fi HD AI Video Doorbell, detailing features, installation, app setup, device usage, and technical specifications.
	VStarcam D1 Smart Doorcam User Manual and Setup Guide Comprehensive user manual for the VStarcam D1 Smart Doorcam, covering product description, technical specifications, software download, setup, usage, features, and service information.



[Εγχειρίδιο Χρήσης VSTARCAM: Οδηγίες Εγκατάστασης και Ρυθμίσεων IP Κάμερας](#)

Αναλυτικό εγχειρίδιο χρήσης για τις IP κάμερες VSTARCAM, που καλύπτει τη διαδικασία λήψης και εγκατάστασης της εφαρμογής EYE4, την εγγραφή λογαριασμού, καθώς και διάφορες μεθόδους σύνδεσης της κάμερας στο δίκτυο, όπως μέσω σάρωσης QR code, ενσύρματης (LAN) ή ασύρματης (WiFi) σύνδεσης.