

Manuals.plus /

› fishkeeper /

› fishkeeper Automatic Pond Fish Feeder (Model FK092-NEW) - Instruction Manual

fishkeeper FK092-NEW

fishkeeper Automatic Pond Fish Feeder (Model FK092-NEW) - Instruction Manual

1. INTRODUCTION

Thank you for choosing the fishkeeper Automatic Pond Fish Feeder. This device is designed to provide precise and scheduled feeding for your pond fish, ensuring they receive consistent nutrition even when you are away. Its weather-resistant and tip-proof design makes it suitable for outdoor use.

2. SAFETY INFORMATION

- Ensure the feeder is securely installed to prevent tipping or displacement by animals or weather.
- Do not immerse the feeder in water. It is weather-resistant, not submersible.
- Use only the specified power options (AC adapter or 4 AAA batteries).
- Keep out of reach of children and pets.
- Regularly check the food hopper for blockages and ensure food remains dry.

3. PRODUCT OVERVIEW & COMPONENTS

The fishkeeper Automatic Pond Fish Feeder comes with the following components:

- 1 x Feeder Container (2.8L capacity)
- 2 x Nails for secure outdoor installation
- 1 x Feed Outlet Chute
- 3 x Feeding Reduction Clips (for portion control)
- 2 x Foot Supports for outdoor installation
- 1 x Desiccant Container (desiccant not included)
- 1 x 6.56ft/2m Power Cord (6V 1A)
- 1 x User Manual

Package Includes



Capacity	2.8L
Dimensions	5.71 x 8.07 x 10.43 inches (20.5 x 14.5 x 26.5 cm)
Material	ABS + PC
Weight	3.2lb/1.45kg
Output Voltage	6V 1A

Image: The fishkeeper Automatic Pond Fish Feeder and its included components, such as the feeder unit, nails, feed chute, reduction clips, foot supports, desiccant container, power cord, and user manual.

4. SETUP

4.1. Power Options

The feeder offers dual power options:

- **AC Connection:** Use the included 6.56-foot power cord for direct connection to an AC outlet.
- **Battery Operation:** Install 4 AAA batteries (not included) for cordless operation. Batteries can provide 1–6 months of life.



Image: A diagram illustrating the two power options: connecting via the included AC power cord or inserting 4 AAA batteries for cordless use.

4.2. Installation Options

Choose one of the following methods to install your feeder:

1. Secure to the Pond (Outdoor Use):

- a. Install the foot supports outwards onto the feeder base.
- b. Use the included nails to securely fasten the feeder to a solid surface by the pond, such as ground, wooden flooring, or tile.

2. Placed on the Aquarium Cover (Indoor Use):

- a. Install the feed outlet chute onto the feeder.
- b. Simply place the feeder directly on top of an indoor aquarium with a lid, ensuring the feed chute is positioned correctly over the water.



Image: Visual instructions for installing the feeder securely by a pond using foot supports and nails, or placing it on an aquarium cover.

4.3. Loading Food & Portion Control

1. Open the lid of the feeder container.
2. Fill the 2.8L hopper with your desired fish food (pellets, strips, corn & nuts).
3. Close the lid securely, ensuring the locking mechanism is engaged.
4. **Adjusting Portion Size:** The feeder includes 3 feeding reduction clips. These can be disassembled to achieve a larger discharge aperture, accommodating various fish feed sizes (2-10mm). Adjust the portion clip to dispense 2–8 grams of food per feeding.

Rainproof Feed Outlet Chute

The feed outlet chute features a shielding design to prevent rainwater from wetting the outlet, thereby avoiding clumping of feed material that could cause feeder blockages. This reduces maintenance time and enhances product durability.



Image: An illustration detailing the precision feeding control, showing the 3 portion control modules (reduction clips) and suitable feed types like small pellets, large pellets, strips, and corn/chopped nuts.

Rotatable Rotor

Each time feed is dispensed, the internal rotor rotates, effectively preventing food from clumping or getting stuck.



Image: A step-by-step guide on removing the reduction clip from the feed outlet to accommodate larger-sized pellets, including a warning to adjust 'Vol' setting.

Your browser does not support the video tag.

Video: This video demonstrates how to adjust the food portion size on the fishkeeper Automatic Pond Fish Feeder, showing the mechanism for controlling the amount of food dispensed.

5. OPERATING INSTRUCTIONS

5.1. LCD Display Overview



Current Time Calibration

1. Press "MODE" to display "Now" part
2. Press "SET" for 3 seconds,
3. Press "+" or "-" to correct the "hour"
4. Press "SET" again
5. Press "+" or "-" to correct the "minute"
6. Press "SET" again to finish setting

Image: An overview of the LCD display, highlighting buttons for MODE, SET, NOW (current time), VOL (feeding volume), TIMING (feeding times), INT (interval), and +/- for adjustments.

5.2. Clock Time Calibration

1. Press "MODE" to display the "Now" part.
2. Press "SET" for 3 seconds.
3. Press "+" or "-" to correct the "hour".
4. Press "SET" again.
5. Press "+" or "-" to correct the "minute".
6. Press "SET" again to finish setting.



Lazy Mode (Pre-set Timer)

1. Press "MODE", "SET" and "+" for 3 seconds to access the Pre-set feeding schedules
2. Press "+" to select your feeding schedules (can only press "+" to cycle through the options)
3. Press "SET" to confirm the schedules and automatically jump to "Vol." setting, press "+" and "-" to adjust the portion
4. Press "SET" to confirm the setting (After successful setup, the "h" icon will appear in the lower-right corner of the time display.)

Image: A visual guide to setting the current time on the feeder's LCD display using the MODE, SET, and +/- buttons.

5.3. Lazy Mode (Preset Timer)

Lazy Mode offers 9 preset feeding schedules for convenience.

1. Press and hold "MODE", "SET", and "+" for 3 seconds to access the pre-set feeding schedules.
2. Press "+" to select your desired feeding schedule (cycle through options).
3. Press "SET" to confirm the schedule, then press "+" and "-" to adjust the portion volume.
4. Press "SET" again to finish setting. An "h" icon will appear in the lower-right corner of the time display.

Pre-set Timer Schedule

1d8(8 meals per day)	6:00, 8:00, 10:00, 12:00, 14:00, 16:00, 18:00, 20:00
1d6(6 meals per day)	6:00, 8:00, 10:00, 12:00, 14:00, 16:00
1d4(4 meals per day)	8:00, 12:00, 16:00, 20:00
1d3(3 meals per day)	8:00, 12:00, 18:00
1d2(2 meals per day)	8:00, 18:00
1d1(1 meal per day)	8:00
2d1(1 meal every 2 days)	8:00
3d1(1 meal every 3 days)	8:00
4d1(1 meal every 4 days)	8:00

Image: A visual guide to setting up Lazy Mode, showing the button sequence and the display for selecting preset feeding schedules.

5.4. Custom Mode (Precise Timer)

Custom Mode allows you to set up to 6 feeding times per day based on your specific needs.

1. Press and hold "SET" and "-" for 3 seconds to reset to factory settings (recommended before switching modes).
2. Press "MODE" twice to access the "Timing" settings.
3. Press "SET" for 3 seconds to start setting the first meal time.
4. Press "+" or "-" to set the hours, then press "SET" to switch to minutes.
5. Continue this process for subsequent meals.
6. To exit without setting additional times, press the "MODE" button and it will automatically jump to the "Int" setting page.
7. Press "SET" for 3 seconds to enter "Int." settings. Use "+" and "-" to adjust the portion, and press "SET" to confirm.

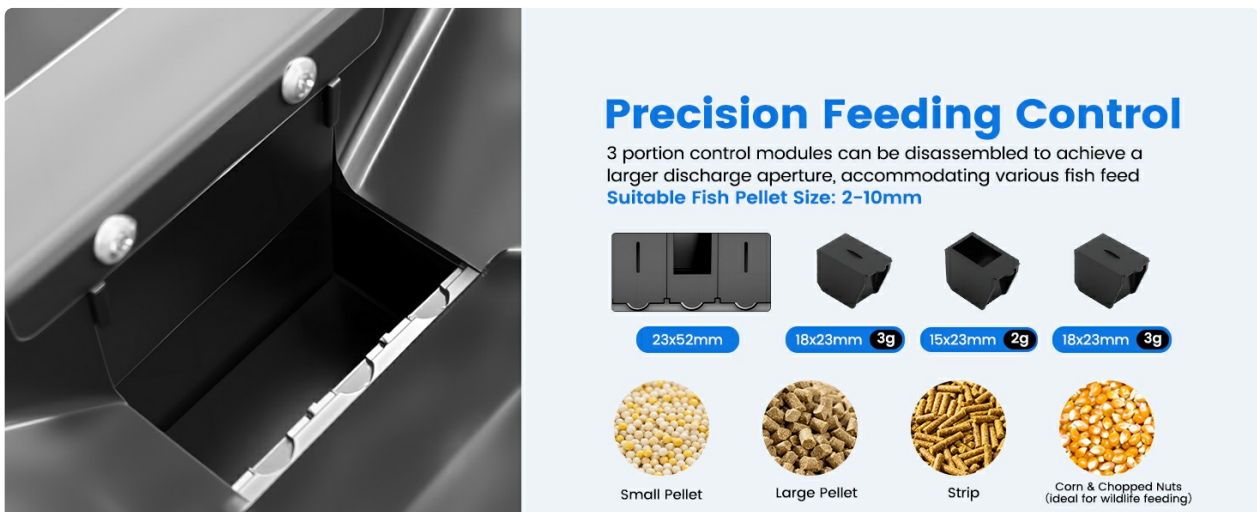


Image: A visual guide to setting up Precise Mode, showing the button sequence and the display for customizing individual feeding times.

Your browser does not support the video tag.

Video: This video demonstrates how to set up two timer modes (Lazy Mode and Custom Mode) on the fishkeeper Automatic Pond Fish Feeder.

6. MAINTENANCE

6.1. Cleaning

Regular cleaning ensures optimal performance and prevents food blockages.

- Remove any remaining food from the hopper.
- Wipe the interior of the hopper and the feed chute with a damp cloth. Ensure all parts are completely dry before refilling.
- Do not use harsh chemicals or abrasive materials.

6.2. Moisture Resistance Features

The feeder is designed with several features to protect food from moisture:

- **Waterproof Snap-On Lid:** The fully enclosed design keeps out rain and features a safety latch to prevent animals from accessing food.
- **Rainproof Feed Outlet Chute:** The chute has a shielding design to prevent rainwater from wetting the food, reducing clumping and enhancing durability.
- **Rotatable Rotor:** An internal rotor rotates with each dispense, preventing food from clumping or getting stuck.
- **Desiccant Container:** A dedicated slot on the lid allows for a desiccant pack (not included) to help maintain food freshness.

Portion Control Plugs

Instantly reduce the dispensed food

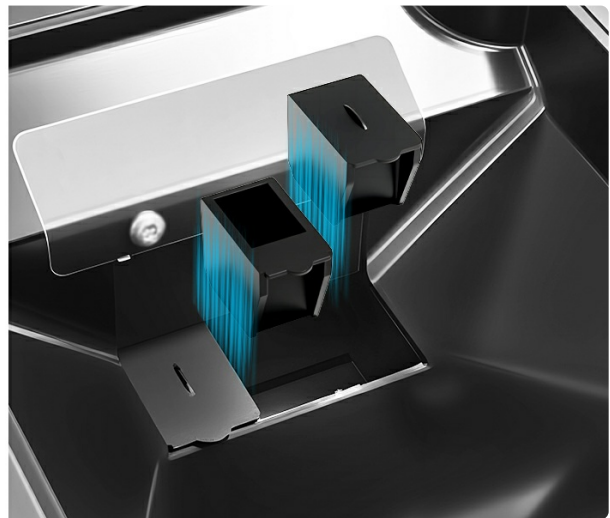
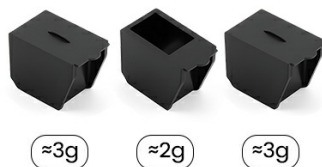


Image: A close-up of the waterproof snap-on cover, highlighting its design to protect against rain and prevent animal access.

Removing the Reduction Clip



1

Press and hold the "-" button for 3 seconds.



2

Use your finger to remove the clip from the feed outlet (shaking the feeder will make clip removal quicker).



3

Short press "-" to reposition the clip.




It is recommended to adjust the "Vol." setting to achieve the desired feeding portion. It is recommended to remove the clip only when using large-sized pellets.


Image: A detailed view of the rainproof feed outlet chute, designed to shield food from moisture and prevent blockages.

Installation Instructions


Secure To The Pond →



1 Install foot supports outward



2 Secure the foot support with nails to a hard surface such as solid ground, wooden flooring, or tile



3 Suitable for pond feeding

Placed On The Aquarium Cover →



1 Install the feed outlet chute



2 Place on the aquarium cover

Image: An illustration of the 360-degree rotatable rotor inside the feeder, which prevents food from clumping and ensures smooth dispensing.

Waterproof Snap-On Cover

The fully enclosed design keeps out rain, while the safety latch prevents raccoons and other animals from stealing food.




Image: A close-up of the desiccant container slot located on the lid, designed to hold a desiccant pack (not included) to keep food dry.

7. TROUBLESHOOTING

Problem	Possible Cause	Solution
Feeder not dispensing food.	Low batteries, food blockage, incorrect settings.	Replace batteries, clear food path, check timer settings.
Food getting wet/clumping.	Lid not sealed, desiccant needed, excessive humidity.	Ensure lid is latched, insert desiccant, check feeder placement.
Feeder unstable/tipping.	Improper installation.	Re-secure using nails and foot supports for outdoor use, or ensure stable placement on aquarium.

8. SPECIFICATIONS

Feature	Detail
Model Number	FK092-NEW
Capacity	2.8L
Dimensions (LxWxH)	12 x 9.64 x 7.48 inches (30.48 x 24.48 x 19 cm)
Item Weight	3.3 pounds (1.5 kg)
Material	PC
Power Options	AC (6V 1A) or 4 x AAA Batteries
Feeding Frequency	0-99 times (programmable)
Portion Size	2-8 grams (adjustable with clips)
Suitable Feed Types	Pellets, Strips, Corn & Nuts (2-10mm)
Special Features	Weather-Resistant, Tip-Proof Design, LCD Display, Dual Timer Modes

9. WARRANTY AND SUPPORT

For warranty information, technical support, or any inquiries regarding your fishkeeper Automatic Pond Fish Feeder, please refer to the contact details provided in the included User Manual or visit the official fishkeeper website.