

Manuals.plus /

› LG /

› LG 24U631A IPS QHD Monitor User Manual

LG 24U631A-B.ATRQ

LG 24U631A IPS QHD Monitor User Manual

Model: 24U631A-B.ATRQ

1. INTRODUCTION

This manual provides essential information for the proper setup, operation, and maintenance of your LG 24U631A IPS QHD Monitor. Please read this manual thoroughly before using the product to ensure safe and efficient operation.

The LG 24U631A is a 24-inch QHD (2560x1440) IPS monitor designed for clear and vibrant visuals, featuring a 100Hz refresh rate, sRGB 99% color accuracy, HDR10 support, and versatile connectivity options including USB-C with 15W power delivery and HDMI. It also incorporates eye care features like Reader Mode and Flicker Safe for enhanced viewing comfort.

2. SETUP

2.1. Unboxing and Included Components

Carefully remove all components from the packaging. Ensure all items listed below are present:

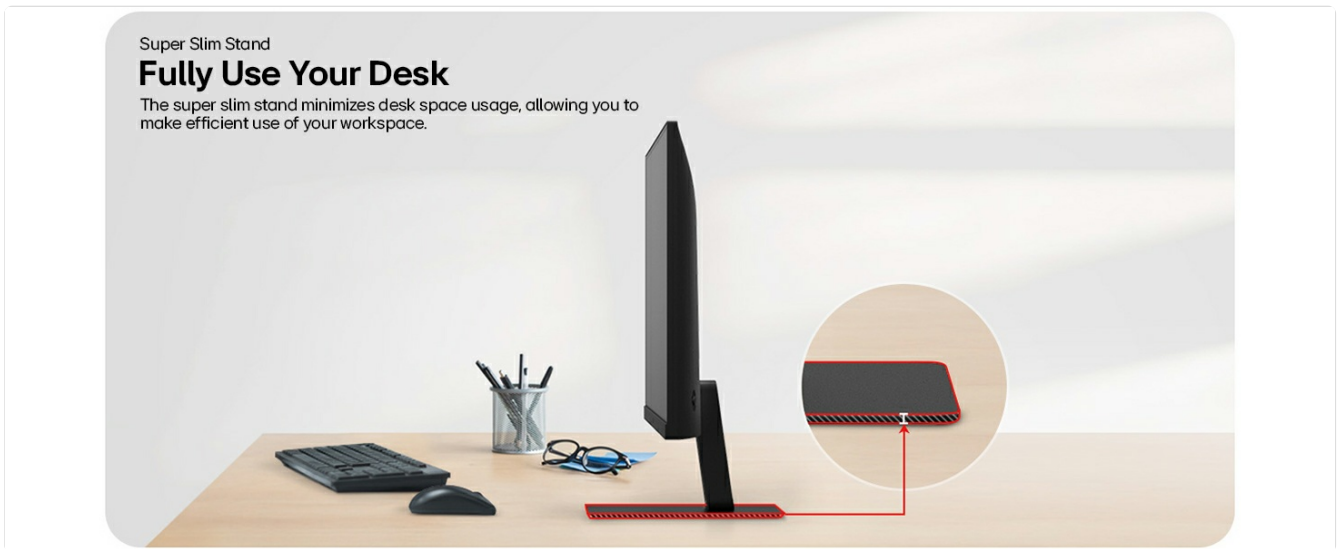
- LG 24U631A Monitor
- Monitor Stand (Base and Neck)
- Power Adapter
- Power Cord
- HDMI Cable

2.2. Assembly

Follow these steps to assemble the monitor stand and attach it to the display panel:

1. Place the monitor panel face down on a soft, clean cloth to prevent scratches.
2. Attach the stand neck to the base, securing it with the provided screw.
3. Align the assembled stand with the mounting holes on the back of the monitor panel and push firmly until it

clicks into place.



The super slim stand minimizes desk space, allowing for efficient workspace utilization.

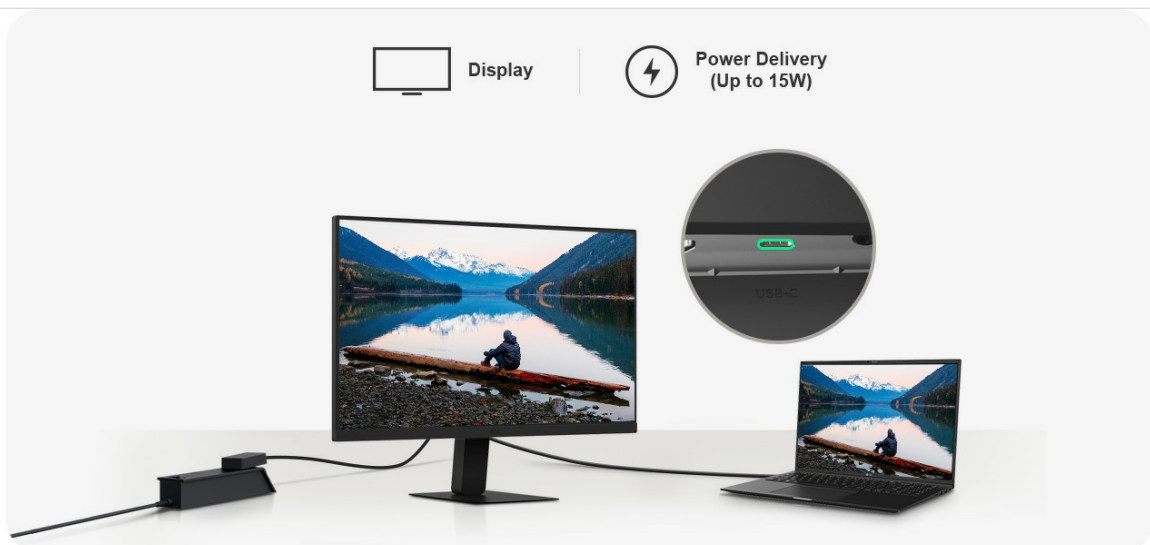
2.3. Connecting the Monitor

Connect the necessary cables to the monitor and your computer:

- **Power Connection:** Connect the power adapter to the monitor's power input and then plug the power cord into a wall outlet.
- **Video Connection:**
 - **HDMI:** Connect one end of the HDMI cable to the HDMI port on your monitor and the other end to the HDMI port on your computer.
 - **USB-C:** Connect a USB-C cable from your computer to the USB-C port on the monitor. This connection supports video, data, and up to 15W power delivery to your connected device.



Rear view of the monitor displaying available connectivity ports.



USB-C connectivity provides both display signal and power delivery (up to 15W) to compatible devices.

3. OPERATING

3.1. Power On/Off and Basic Controls

To power on the monitor, press the joystick button located at the bottom center of the monitor. Press it again to access the On-Screen Display (OSD) menu for various settings.

3.2. Display Settings and Features

Your LG 24U631A monitor offers a range of features for an optimized viewing experience:

- **QHD IPS Display:** Enjoy sharp details and consistent colors across wide viewing angles with the 2560x1440 resolution and IPS panel technology.
- **100Hz Refresh Rate:** Experience smoother motion for videos, games, and general tasks.
- **sRGB 99% Color Accuracy with HDR10:** Achieve accurate and vibrant color reproduction, ideal for content creation and media consumption, enhanced by HDR10 support.



The 100Hz IPS panel provides smooth visuals and accurate colors for various applications.

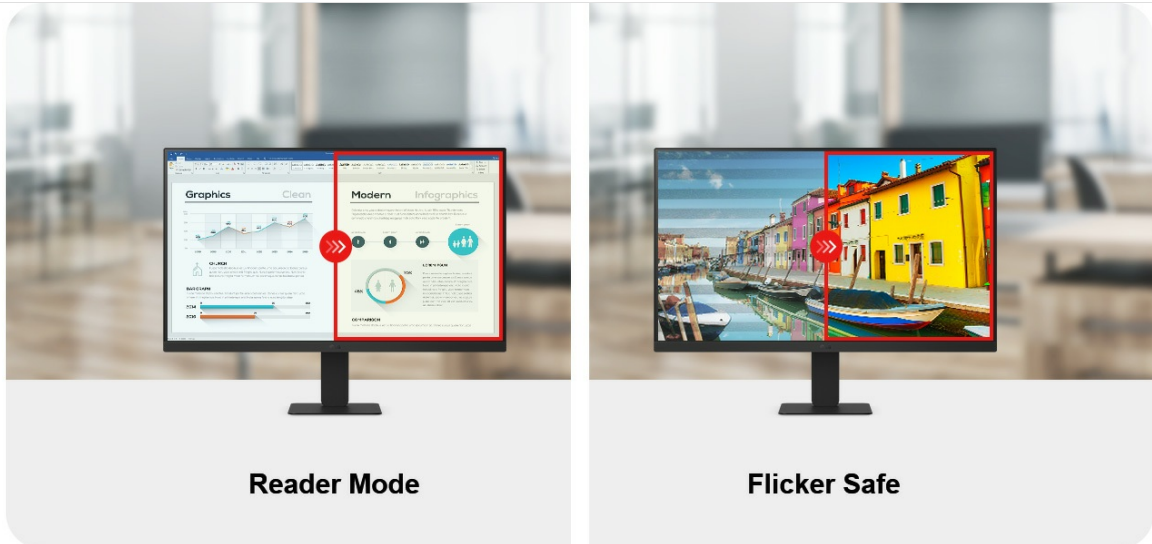


Experience rich and accurate colors with sRGB 99% and HDR10 support.

3.3. Eye Care Features

To minimize eye strain during extended use, the monitor includes:

- **Reader Mode:** Reduces blue light emissions, creating a paper-like viewing experience.
- **Flicker Safe:** Minimizes screen flicker, reducing eye fatigue.

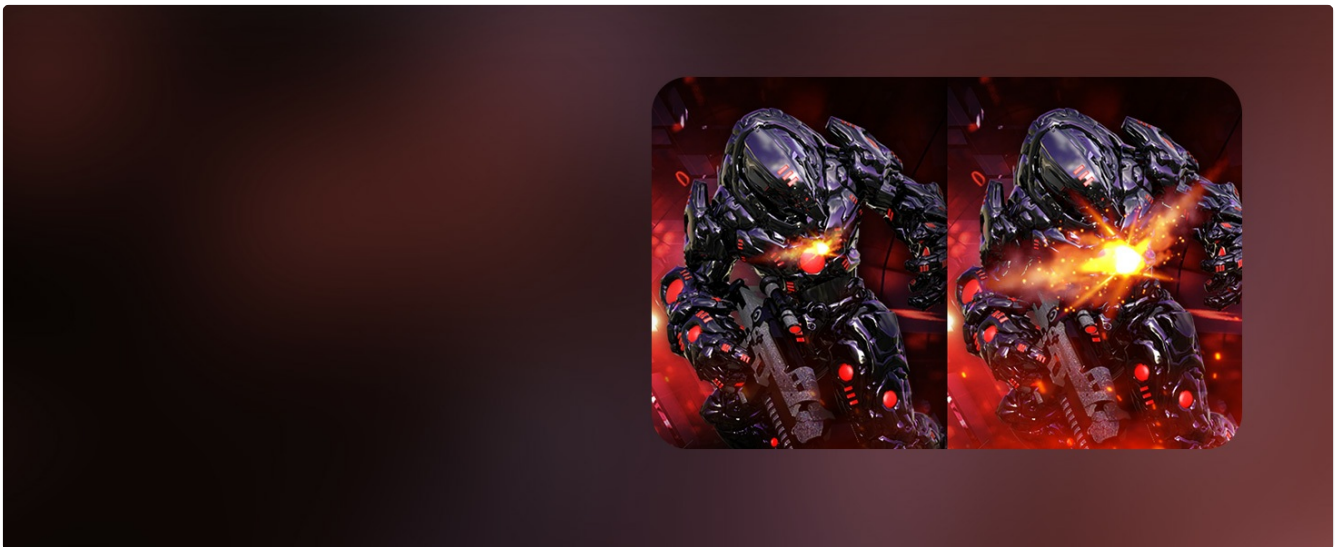


Activate Reader Mode and Flicker Safe for a more comfortable viewing experience.

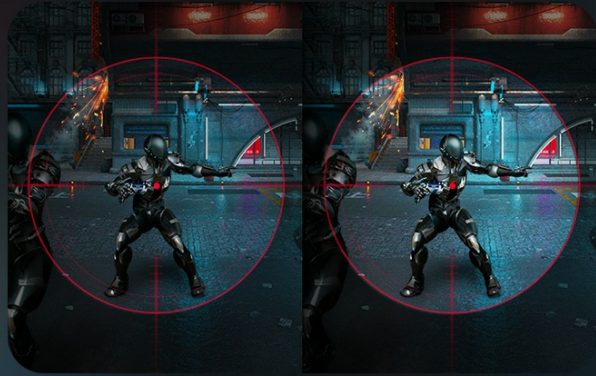
3.4. Gaming Features

For an enhanced gaming experience, the monitor offers:

- **Black Stabilizer:** Improves visibility in dark areas of games.
- **Crosshair:** Provides a fixed target point in the center of the screen for improved aiming in first-person shooter games.



Black Stabilizer enhances visibility in dark game scenes.



The Crosshair feature provides a central aiming point for improved accuracy.

4. MAINTENANCE

Proper maintenance ensures the longevity and optimal performance of your monitor.

4.1. Cleaning the Monitor

- Always unplug the monitor from the power outlet before cleaning.
- Use a soft, lint-free cloth slightly dampened with water or a mild, non-abrasive screen cleaner.
- Do not spray cleaner directly onto the screen.
- Avoid using benzene, thinner, or any volatile substances, as they may damage the surface.

4.2. General Care

- Avoid placing the monitor in direct sunlight or near heat sources.
- Ensure adequate ventilation around the monitor.
- Do not place heavy objects on the monitor or its cables.

5. TROUBLESHOOTING

If you encounter issues with your monitor, refer to the following common problems and solutions:

Problem	Possible Cause / Solution
No image on screen	Ensure power cable is securely connected. Check video cable connection (HDMI/USB-C) to both monitor and computer. Verify computer is powered on and not in sleep mode.
Image is blurry or distorted	Check display resolution settings on your computer and ensure it matches the monitor's native resolution (2560x1440). Adjust display settings via the monitor's OSD menu.
No sound from headphones (if connected)	Ensure headphones are properly plugged into the monitor's headphone out port. Check audio output settings on your computer to ensure the monitor is selected as the output device.
Monitor not recognized by computer via USB-C	Ensure your USB-C cable supports video transmission. Update graphics drivers on your computer. Try connecting to a different USB-C port on your computer if available.

If the problem persists after attempting these solutions, please contact LG customer support.

6. SPECIFICATIONS

Feature	Specification
Brand	LG
Model Number	24U631A-B.ATRQ
Screen Size	23.8 Inches
Display Type	IPS
Resolution	2560 x 1440 (QHD)
Refresh Rate	100Hz
Aspect Ratio	16:9
Color Gamut	sRGB 99% (Typ.)
HDR Support	HDR10
Connectivity	1x HDMI, 1x USB-C (with 15W PD)
Headphone Out	Yes
Eye Care Features	Reader Mode, Flicker Safe
Product Dimensions (WxHxD)	53.94 x 41.36 x 21.5 cm
Item Weight	3.6 kg
Country of Origin	China

7. WARRANTY AND SUPPORT

7.1. Warranty Information

The LG 24U631A IPS QHD Monitor comes with a **3 Years Warranty** from the date of purchase. Please retain your proof of purchase for warranty claims.

7.2. Customer Support

For technical assistance, troubleshooting, or warranty service, please contact LG customer support through their official website or the contact information provided in your product packaging. When contacting support, please have your monitor's model number (24U631A-B.ATRQ) and serial number ready.