

[Manuals.plus](#) /

> [NAOEVO](#) /

> NAOEVO 12 Inch LED Light Bar and 4 Inch LED Pod Lights Combo User Manual

## NAOEVO B0F5GYZFVP

# NAOEVO 12 Inch LED Light Bar and 4 Inch LED Pod Lights Combo User Manual

Model: B0F5GYZFVP

## INTRODUCTION

---

Thank you for choosing the NAOEVO 12 Inch LED Light Bar and 4 Inch LED Pod Lights Combo. This product is designed to provide powerful and versatile illumination for a wide range of 9-32V vehicles and outdoor applications. This manual provides essential information for the safe and effective installation, operation, and maintenance of your new lighting system.

The combo includes a 12-inch LED light bar featuring 100 high-quality SMD3030 LED chips, delivering 300W/30000LM of bright 6500K white light. The 4-inch LED pod lights offer a combination of 15° spotlight for long-range visibility and 120° floodlight for broad coverage, with a 45° adjustable bracket for flexible beam direction. Both components are built with a durable die-cast aluminum housing, IP68 waterproof rating, and efficient cooling systems to ensure a lifespan of up to 50,000 hours.

## SETUP AND INSTALLATION

---

Careful installation is crucial for optimal performance and safety. Please read all instructions before beginning.

### Package Contents

- 1 x 12-inch LED Light Bar
- 4 x 4-inch LED Pod Lights
- 1 x 10ft Wiring Harness (for 12-inch light bar)
- 1 x 12ft Wiring Harness (for 4-inch LED pod lights)
- Installation Accessories (brackets, screws, nuts)
- Fuses and Male Connectors

### Product Dimensions

# PRODUCT DIMENSION



## PACKAGE LIST

- 1 Pc 12inch Led Light Bar
- 1 Set 10ft Wiring Harness
- 1 Set Installation Accessories

Figure 1: 12-inch LED Light Bar dimensions (approx. 12 inches long, 3.15 inches high, 2.6 inches deep) and its associated 10ft wiring harness and installation accessories.

# PRODUCT DIMENSION



## PACKAGE LIST

- 4 Pcs 4inch LED Light Pods
- 1 Pc 4-Lead Wiring Harness
- 1 Set Installation Accessories

**Figure 2:** 4-inch LED Pod Light dimensions (approx. 4 inches long, 3.15 inches high, 2.6 inches deep) and its associated 12ft wiring harness and installation accessories.

## Wiring Instructions

The product includes two separate wiring harnesses for the light bar and the pod lights. Each harness is designed for easy connection to a 9-32V DC power source.

# 1 LEAD 10FT HARNESS INCLUDED



**Toggle Design  
Switch**



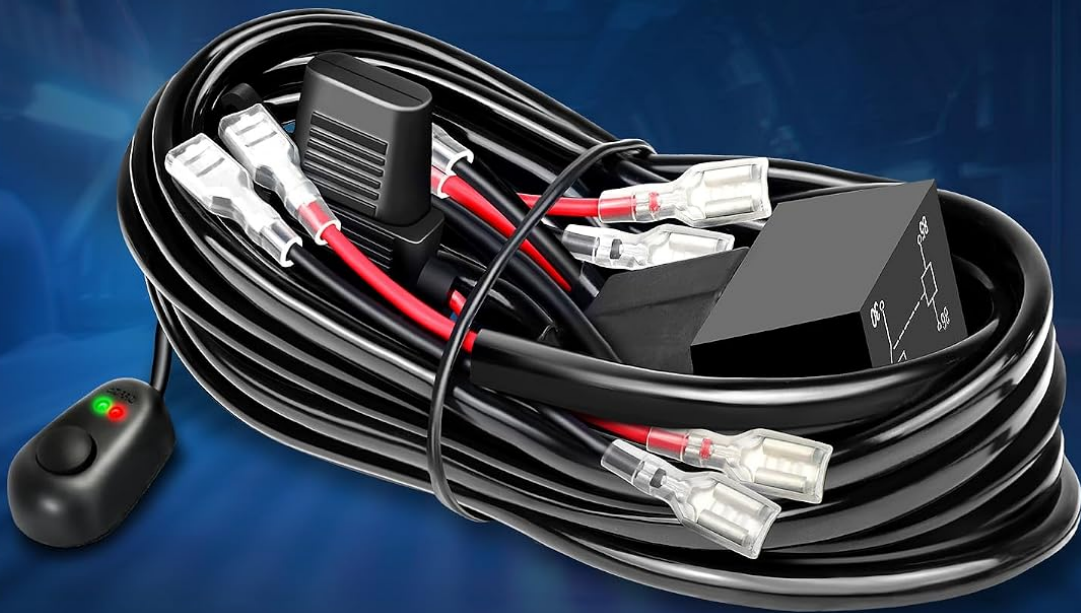
**2-Wires Design**



**Fuses & Male  
Connectors Provided**

**Figure 3:** 1-Lead 10ft Wiring Harness for the 12-inch LED Light Bar. Features a toggle design switch, 2-wire design, and includes fuses and male connectors.

# 4 LEADS 12FT HARNESS INCLUDED



**Water Drop  
Button Design**



**4-Lead Design**



**Fuses & Male  
Connectors Provided**

**Figure 4:** 4-Leads 12ft Wiring Harness for the 4-inch LED Pod Lights. Features a water drop button design switch, 4-lead design, and includes fuses and male connectors.

- 1. Mounting:** Securely attach the light bar and pod lights to your vehicle using the provided installation accessories and adjustable brackets. Ensure the mounting location is stable and does not obstruct vehicle functions or visibility. The pod lights feature a 45° adjustable bracket for directing the beam.
- 2. Connect Wiring Harness:** Connect the appropriate wiring harness to each lighting unit. Ensure all connections are tight and secure.
- 3. Power Connection:** Connect the positive (+) wire of the harness to a fused 9-32V DC power source (e.g., vehicle battery or auxiliary power). Connect the negative (-) wire to a suitable ground point on the vehicle chassis.
- 4. Switch Installation:** Install the included switches (toggle for light bar, button for pod lights) in a convenient and accessible location within the vehicle's cabin.

5. **Test Functionality:** Before finalizing the installation, test the lights to ensure they function correctly.

**Important:** Always ensure the vehicle's power is disconnected before performing any wiring work. Consult a professional if you are unsure about any part of the installation process.

## OPERATING INSTRUCTIONS

---

The NAOEVO LED lighting system is designed for straightforward operation.

### Turning On/Off

- **12-inch LED Light Bar:** Use the toggle switch on its dedicated 10ft wiring harness to turn the light bar on or off.
- **4-inch LED Pod Lights:** Use the water drop button switch on their dedicated 12ft wiring harness to turn the pod lights on or off.

### Beam Patterns and Adjustments



Figure 5: Spot Flood Combo Beam pattern. The 15° spotlight provides high-focus, long-distance lighting, while the 120° floodlight enables a wide field of vision.

# SPOT FLOOD COMBO BEAM



**Figure 6:** Detailed view of the LED arrangement for spot and flood beams. The specific reflector designs achieve multi-angle projection for optimal lighting.

- The 12-inch light bar provides a powerful 6500K white light, designed to defeat darkness effectively.
- The 4-inch LED pod lights feature a dual beam pattern: a **15° spotlight** for focused, long-range illumination and a **120° floodlight** for broader area coverage. This combination is ideal for off-road driving where both distant and peripheral vision are critical.
- The pod lights are equipped with a **45° adjustable bracket**, allowing you to manually reposition the lights to change the direction of the beam as needed.

## MAINTENANCE

Regular maintenance ensures the longevity and optimal performance of your NAOEVO LED lights.

- **Cleaning:** Periodically clean the lenses with a soft cloth and mild soap solution to remove dirt, dust, and debris. Avoid abrasive cleaners or harsh chemicals that could damage the lens material.
- **Connection Check:** Regularly inspect all wiring connections to ensure they remain tight and free from corrosion. Loose connections can lead to flickering or intermittent operation.
- **Mounting Hardware:** Verify that all mounting bolts and brackets are secure. Vibrations from vehicle operation can sometimes loosen hardware over time.
- **Cooling Fins:** Ensure the cooling fins on the back of the light bar and pod lights are free from mud, leaves, or other obstructions to allow for efficient heat dissipation.
- **Waterproofing:** While the lights are IP68 rated, avoid directing high-pressure water jets directly at the seals during vehicle washing to prevent potential water ingress over time.

## TROUBLESHOOTING

---

If you encounter issues with your NAOEVO LED lights, refer to the following common troubleshooting steps:

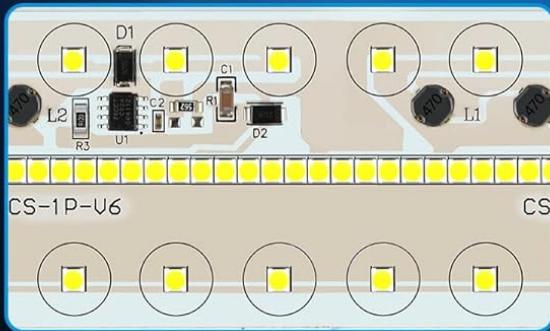
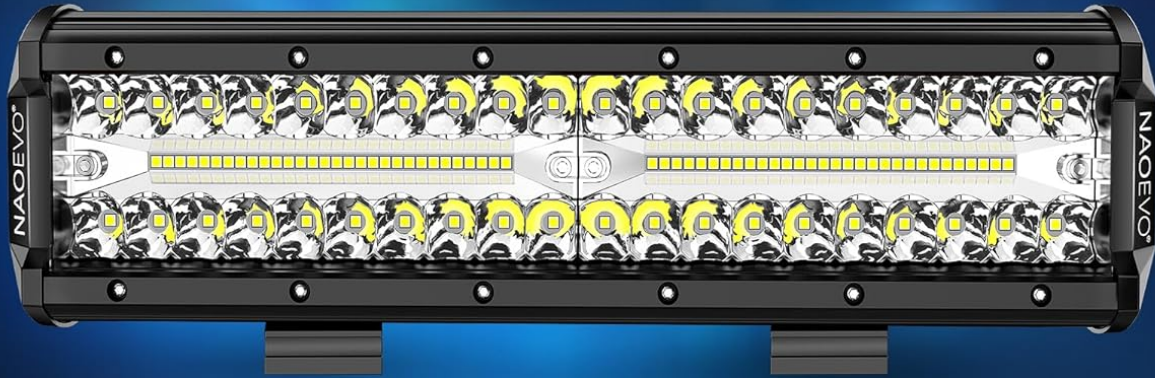
- **Lights Not Turning On:**
  - Check the power connection to the vehicle's battery or power source.
  - Inspect the fuse in the wiring harness. Replace if blown.
  - Ensure the switch is in the 'ON' position and functioning correctly.
  - Verify the ground connection is secure.
- **Lights Dim or Flickering:**
  - Check for loose or corroded wiring connections.
  - Ensure the vehicle's voltage supply is stable and within the 9-32V range.
  - Inspect the wiring for any damage or pinches.
- **Water Inside Lens:**
  - While rare due to IP68 rating, check for any visible cracks or damage to the lens or housing.
  - If persistent, contact NAOEVO support for assistance.
- **Excessive Heat:**
  - Ensure cooling fins are clear of debris and have adequate airflow.
  - Verify the lights are connected to the correct voltage.

If these steps do not resolve the issue, please contact NAOEVO customer support.

## SPECIFICATIONS

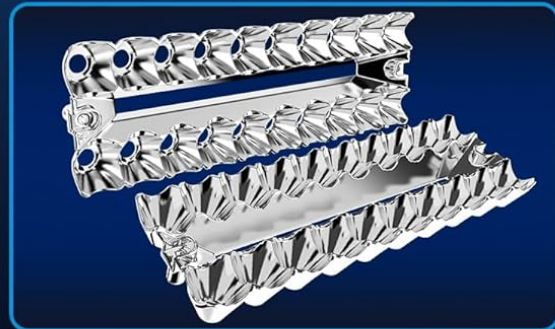
---

# HIGH PERFORMANCE COMPONENTS



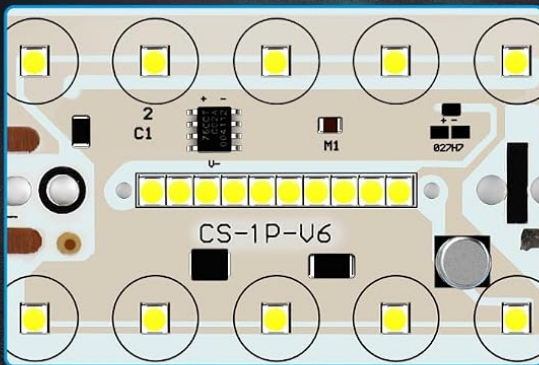
◀ A Total of **100** High-intensity **SMD3030** LED Chips Are Used.

Advanced Reflectors ▶  
Achieves Multi-angle  
Projection.



**Figure 7:** High Performance Components. The light bar utilizes 100 high-intensity SMD3030 LED chips and advanced reflectors for multi-angle projection.

# HIGH PERFORMANCE



**1** 20 High-intensity SMD3030 LED Chips Are Used in Each Light Pod.

**2** Advanced Reflectors Achieves Multi-angle Projection.

Figure 8: High Performance Pod Components. Each light pod uses 20 high-intensity SMD3030 LED chips and advanced reflectors for multi-angle projection.

Feature	Specification
Product Type	LED Light Bar and Pod Lights Combo
Brand	NAOEVO
Model (ASIN)	B0F5GYZFVP
Light Bar Size	12 inches
Light Bar LED Chips	100pcs SMD3030

Light Bar Output	300W / 30000LM
Light Bar Color Temperature	6500K (White Light)
Pod Light Size	4 inches
Pod Light Beam Pattern	15° Spotlight, 120° Floodlight (Combo)
Pod Light Bracket Adjustment	45° Adjustable
Operating Voltage	9-32V DC
Waterproof Rating	IP68
Housing Material	Die-cast Aluminum
Lens Material	PC (Polycarbonate)
Cooling System	10 Cooling Fans (on light bar)
Lifespan	Up to 50,000 Hours

## WARRANTY AND SUPPORT

---

NAOEVO is committed to providing high-quality products and customer satisfaction.

### Warranty Information

For specific warranty details regarding your NAOEVO 12 Inch LED Light Bar and 4 Inch LED Pod Lights Combo, please refer to your purchase documentation or contact NAOEVO customer support directly. Warranty terms typically cover manufacturing defects and material flaws under normal use.

### Customer Support

If you have any questions, concerns, or require assistance with your product, please do not hesitate to contact NAOEVO customer support. Our team is dedicated to providing the best possible service. Contact information can typically be found on the NAOEVO official website or through your original point of purchase.