

GiieeGii M 7

GiieeGii M7 360° Adjustable Vacuum Suction Magnetic Phone Holder User Manual

Model: M 7

1. INTRODUCTION

Thank you for choosing the GiieeGii M7 360° Adjustable Vacuum Suction Magnetic Phone Holder. This innovative product is designed to provide a secure and versatile mounting solution for your smartphone in various environments, including your car, home, or office. Featuring a powerful vacuum suction cup and a strong N52 magnetic array, it ensures your device remains stable and accessible. The adjustable design allows for optimal viewing angles and easy portability.

2. WHAT'S IN THE BOX

Please verify that all components are present:

- 1 x Vacuum Suction Magnetic Bracket
- 1 x Cleaning kit
- 1 x Metal ring for non-MagSafe phones
- 2 x Transparent adhesive pad for mounting on rough surfaces indoors
- 1 x Black adhesive plate for mounting on car dashboards

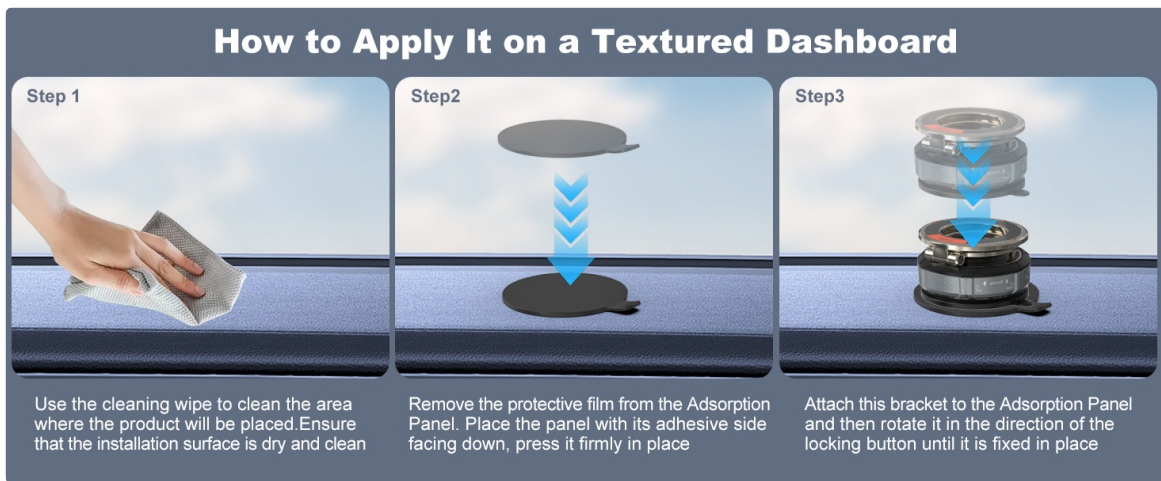


Figure 2.1: Package Contents. The image displays all items included in the GiieeGii M7 product box, ensuring users can confirm they have received everything.

3. SETUP INSTRUCTIONS

Follow these steps to properly install your magnetic phone holder:

3.1. Preparing the Surface

Ensure the mounting surface is clean, dry, and free of dust or debris. Use the provided cleaning kit for optimal adhesion.

3.2. Mounting on Smooth Surfaces (Glass, Tiles, etc.)

1. Position the vacuum suction cup directly onto the desired smooth surface.
2. Press down firmly on the bracket and rotate the locking knob clockwise until it is securely fixed.

3.3. Mounting on Textured Surfaces (Leather-textured dashboards, rough indoor surfaces, etc.)

1. **For Car Dashboards:** Clean the area. Apply the included black adhesive plate to the dashboard. Press firmly to ensure strong adhesion.
2. **For Rough Indoor Surfaces:** Clean the area. Apply one of the transparent adhesive pads to the surface. Press firmly.
3. Once the adhesive plate/pad is securely attached, position the vacuum suction cup of the bracket onto the plate/pad.
4. Press down firmly on the bracket and rotate the locking knob clockwise until it is securely fixed.

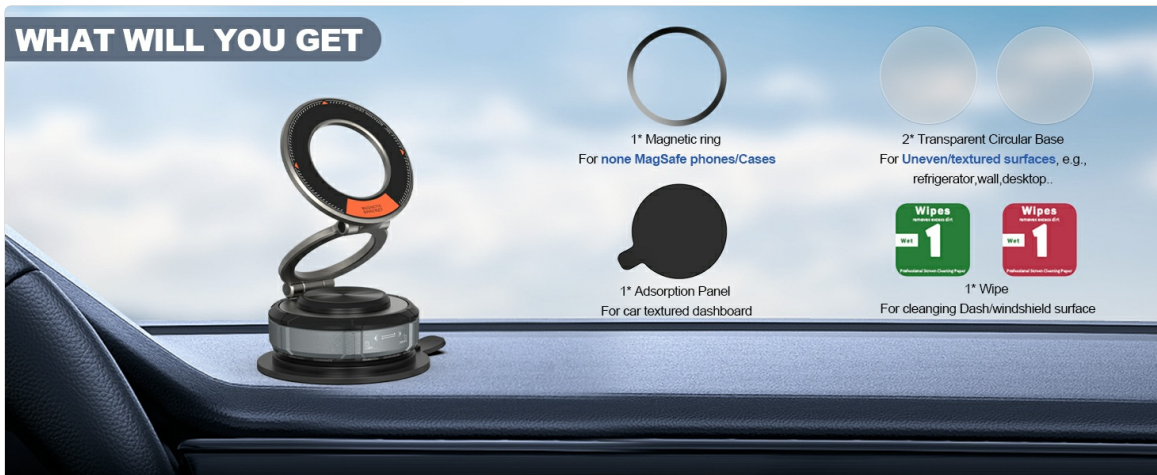


Figure 3.1: Installation on Textured Dashboard. This image illustrates the process of preparing a textured dashboard and attaching the adhesive plate before securing the vacuum suction bracket.

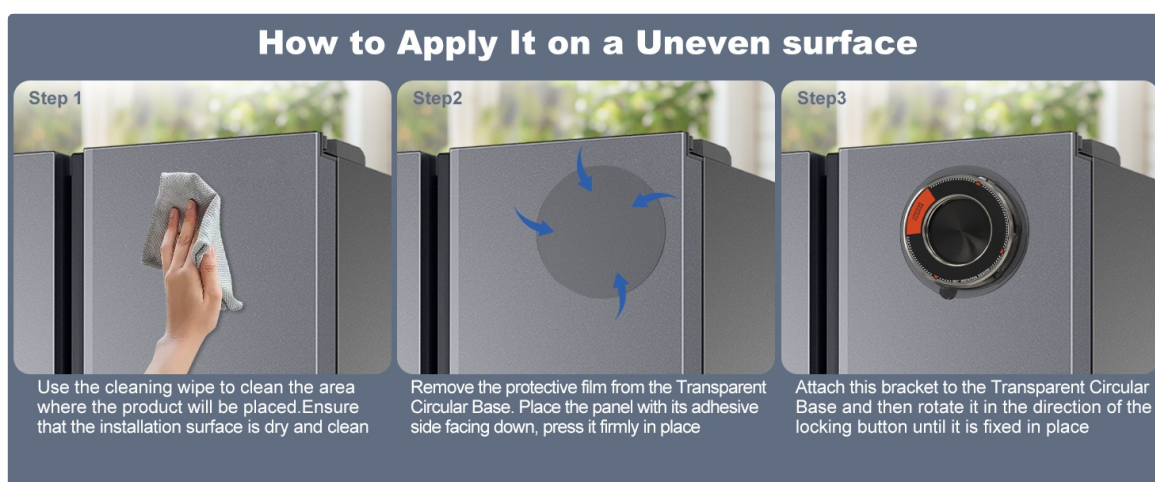


Figure 3.2: Installation on Uneven Surface. This image demonstrates how to use the transparent circular base to mount the phone holder on rough or uneven indoor surfaces.

3.4. Attaching Your Phone

- 1. For MagSafe Compatible Phones (iPhone 12/13/14/15/16/17 series) or MagSafe Cases:** Simply align your phone with the magnetic ring on the holder. The strong N52 magnet will securely attach your device.
- 2. For Non-MagSafe Phones:** Attach the included metal ring to the back of your phone or phone case. Ensure it is centered for optimal magnetic connection. Then, align your phone with the magnetic ring on the holder.

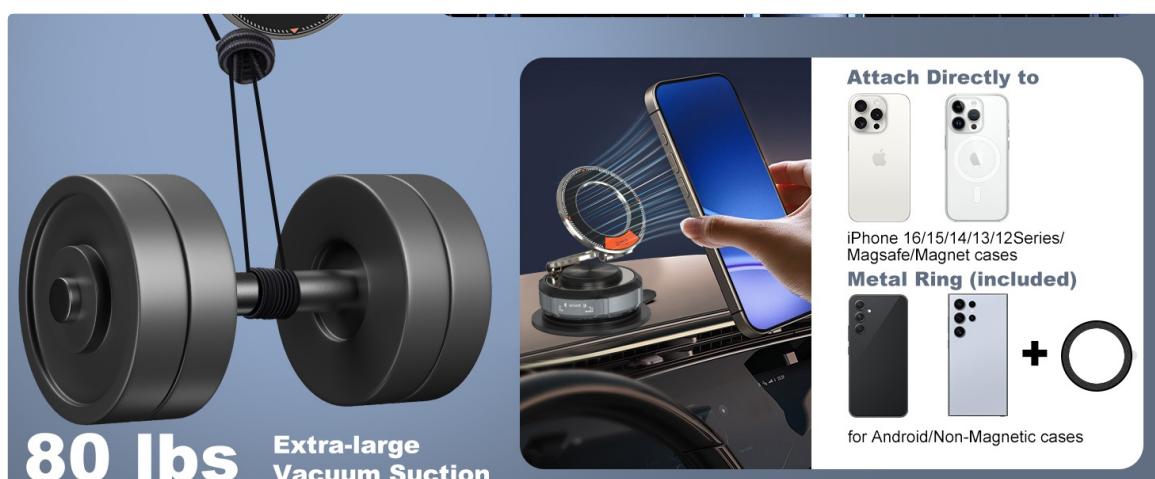


Figure 3.3: Phone Attachment. This diagram illustrates the magnetic attachment for both MagSafe and non-MagSafe phones, highlighting the use of the metal ring for universal compatibility.

4. OPERATING INSTRUCTIONS

4.1. Adjusting Viewing Angle

The holder features a 360° rotating base and a 210° dual-axis foldable metal arm. This allows for flexible adjustment to achieve any desired viewing angle. You can easily switch between portrait and landscape modes.



Figure 4.1: Multi-Angle Adjustment. This image showcases the flexibility of the holder's design, allowing users to position their phone at various angles for optimal viewing.

4.2. One-Handed Operation

The design supports instant installation and removal of your phone with one hand, providing quick and intuitive operation.

4.3. Portability

The compact foldable design makes the magnetic suction mount easy to carry, ideal for daily use and travel.

80 lbs Extra-large Vacuum Suction



- ◀ Turn left to lock
- ▶ Turn right to release



Figure 4.2: Multi-Scenario Use. The image demonstrates the holder's adaptability for different environments, from car travel to home and sports activities.

4.4. Official Product Video

Watch this official video for a visual guide on the GiieeGii Vacuum Suction Magnetic Phone Holder:

Video 4.1: GiieeGii Vacuum Suction Magnetic Phone Holder. This video provides an overview of the product's features and functionality, demonstrating its use in various settings.

5. MAINTENANCE

To ensure the longevity and optimal performance of your GiieeGii M7 phone holder, follow these

maintenance guidelines:

- **Clean the Suction Cup:** Periodically clean the suction cup with water and allow it to air dry. This helps maintain its adhesive properties.
- **Clean Surfaces:** Always ensure the mounting surface is clean before attaching the holder to prevent dust or debris from compromising the suction.
- **Avoid Extreme Force:** While the holder is robust, avoid applying excessive force when adjusting the arm or attaching/detaching your phone to prevent damage to the hinges or magnetic components.
- **Storage:** When not in use for extended periods, store the holder in a cool, dry place away from direct sunlight.

6. TROUBLESHOOTING

If you encounter any issues with your GiieeGii M7 phone holder, please refer to the following common solutions:

- **Suction Cup Not Sticking:**
 - Ensure the mounting surface is completely clean and dry.
 - Verify that the surface is smooth. For textured or uneven surfaces, use the provided adhesive plate or pad as described in Section 3.3.
 - Make sure the locking knob is fully rotated clockwise to activate the vacuum seal.
 - Clean the suction cup with water and let it air dry to restore its stickiness.
- **Phone Not Attaching Securely:**
 - Confirm your phone or case is MagSafe compatible.
 - If using a non-MagSafe phone, ensure the metal ring is correctly applied to the back of your phone or case and is centered.
 - Check for any obstructions between the phone and the magnetic surface, such as thick cases or credit cards.
- **Arm/Joints are Loose:**
 - The dual-axis foldable arm is designed to be stiff to hold position. If it feels loose, ensure no components are damaged.

7. SPECIFICATIONS

Feature	Detail
Product Dimensions	2.44 x 2.44 x 1.42 inches
Item Weight	4.9 ounces

Feature	Detail
Item Model Number	M 7
Special Features	Adjustable, Foldable, Lightweight, One-Hand Operation, Quick Release Button
Color	Black
Manufacturer	Shenzhen Jiqi Technology Co., Ltd.
Compatible Devices	Smartphones
Compatible Phone Models	iPhone 17/17 Air/17 Pro/17 Pro Max/16/16 Plus/16 Pro/16 Pro Max/ iPhone 15/15 Plus/15 Pro/15 Pro Max/iPhone 14/14 Plus/14 Pro/14 Pro Max/iPhone 13/13 Pro/13 Pro Max/13 mini/iPhone 12 Pro Max / 12 Pro/ 12/ SE/ 11 Pro Max/ 11 Pro/ 11/ Xs/ Xs Max/ Xs/ XR/ X/ 8/ 8 Plus/ 7/ 7 Plus/ 6/ 6s; Samsung Galaxy Note 20/ S21/ S21+/ S21 Ultra 5G/ S20/ S20+/ Note10/ Note10+/ S10/ S10+/ S10e/ S9/ S8, All Smartphones
Mounting Type	Surface Mount
Operating Temperature Range	-40°F to 300°F
Magnetic Force	N52 circular magnet with 2400 gauss
Suction Strength	Supports up to 80 pounds

8. WARRANTY AND SUPPORT

GiieeGii products are designed for durability and performance. For any warranty claims or technical support, please refer to the contact information provided with your purchase or visit the official GiieeGii website. Keep your purchase receipt as proof of purchase.