

## Aroepurt Mobiwire Smart V25

# Aroepurt Mobiwire Smart V25 Phone Case and Tempered Glass Screen Protector Instruction Manual

## 1. INTRODUCTION

This manual provides comprehensive instructions for the Aroepurt Phone Case and Tempered Glass Screen Protector designed for the Mobiwire Smart V25. This product offers robust protection for your device, combining a durable case with a high-quality screen protector. Key features include a dual-layer case construction, integrated ring support, and enhanced shock absorption.

- **Dual Protection:** Hard PC back panel combined with a soft silicone frame for comprehensive device protection.
- **Shock Absorption:** Features four-corner shock airbags to mitigate impact from drops.
- **Integrated Ring Support:** An adhesive metal finger ring provides secure grip, kickstand functionality, and 360-degree rotation.
- **Reflective Design:** The case features a frosted surface with a colorful, reflective light effect, achieved through a multi-layered IMD laser style process.
- **Screen Protection:** Includes a 9H high hardness tempered glass screen protector for scratch and shatter resistance.

## 2. PACKAGE CONTENTS

Please verify that all items listed below are present in your package:

- 1 x Aroepurt Phone Case for Mobiwire Smart V25
- 1 x Tempered Glass Screen Protector

## 3. SETUP INSTRUCTIONS

### 3.1. Phone Case Installation

1. Ensure your Mobiwire Smart V25 phone is clean and free of dust or debris.

2. Gently insert the phone into the soft silicone frame of the case, starting with one side.
3. Press the remaining edges of the phone into the case until it is securely seated. Ensure all buttons and ports align correctly with the case cutouts.



Image showing the Aroepurt Mobiwire Smart V25 phone case with its colorful reflective design, integrated ring holder, and a separate view of the phone and ring holder component.

### 3.2. Tempered Glass Screen Protector Installation

For optimal adhesion and clarity, perform this installation in a dust-free environment.

1. **Clean the Screen:** Use the provided alcohol wipe to thoroughly clean your phone's screen. Follow with the microfiber cloth to remove any smudges or lint. Ensure the screen is completely dry.
2. **Remove Dust:** Use the dust-absorber sticker to pick up any remaining dust particles from the screen.
3. **Align the Protector:** Carefully peel off the protective film from the adhesive side of the tempered glass. Align the screen protector with your phone's screen, paying attention to the edges, camera cutout, and speaker.
4. **Apply:** Once aligned, gently lower the screen protector onto the screen. It will begin to adhere

automatically.

5. **Remove Bubbles:** If any air bubbles appear, gently push them towards the edges of the screen using the microfiber cloth or a soft card.

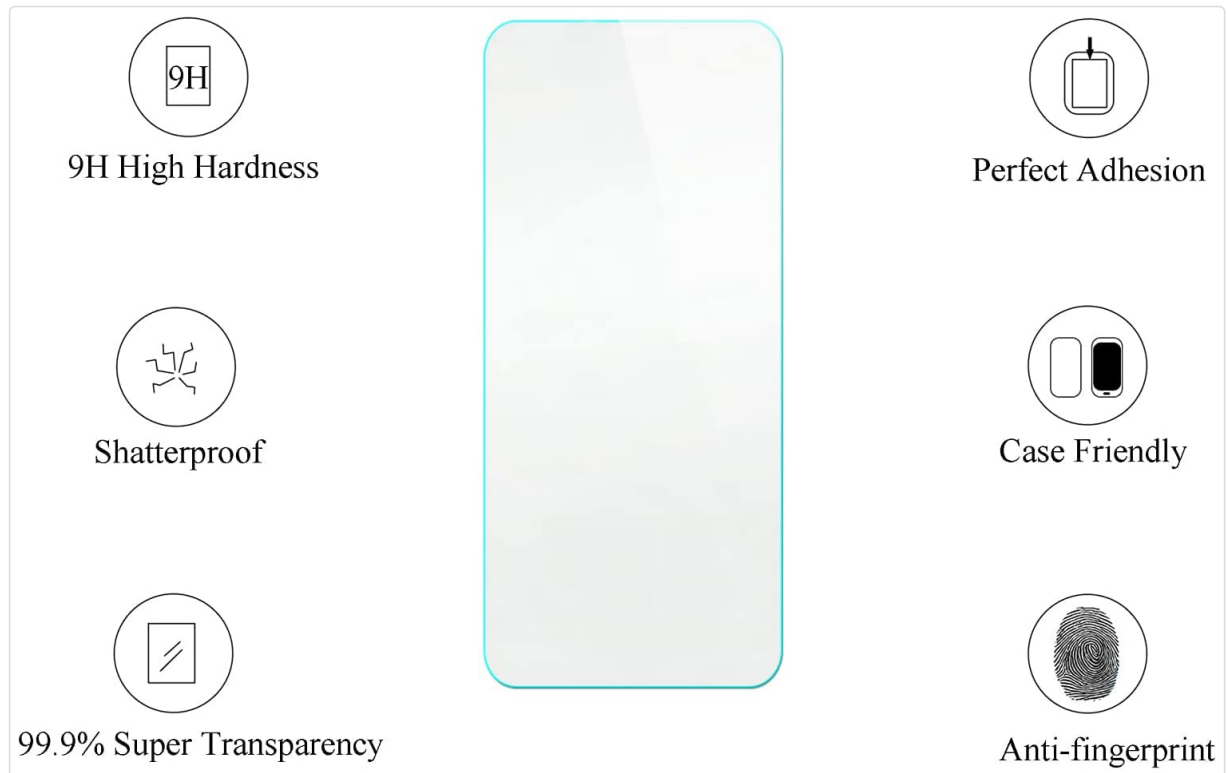


Diagram outlining the key features of the tempered glass screen protector, including 9H high hardness, perfect adhesion, shatterproof properties, case-friendly design, 99.9% super transparency, and anti-fingerprint coating.



## Scratch Proof

Scratch proof screen effectively avoids sharp objects scratching or abrasion



Image demonstrating the scratch-proof capability of the tempered glass screen protector, showing a hammer striking the glass without causing damage.

### 3.3. Ring Holder Attachment (Optional)

The adhesive metal finger ring can be attached to the back of the phone case or used separately.

1. Clean the desired attachment area on the back of the phone case with an alcohol wipe and dry thoroughly.
2. Peel off the protective film from the adhesive backing of the ring holder.
3. Carefully position the ring holder on the case and press firmly for 30 seconds to ensure strong adhesion. Allow 24 hours for the adhesive to fully cure before heavy use.

## 4. OPERATING INSTRUCTIONS

### 4.1. Using the Ring Holder

The integrated ring holder provides enhanced grip and functionality:

- **Secure Grip:** Slide your finger through the ring for a more secure hold, reducing the risk of accidental drops.
- **Kickstand Function:** Rotate the ring 360 degrees and flip it 180 degrees to position your phone at a

comfortable viewing angle for media consumption.

- **One-Hand Operation:** The ring allows for easier reach across the entire screen with one hand.

# One-Hand Operation

Touch more spots on the screen

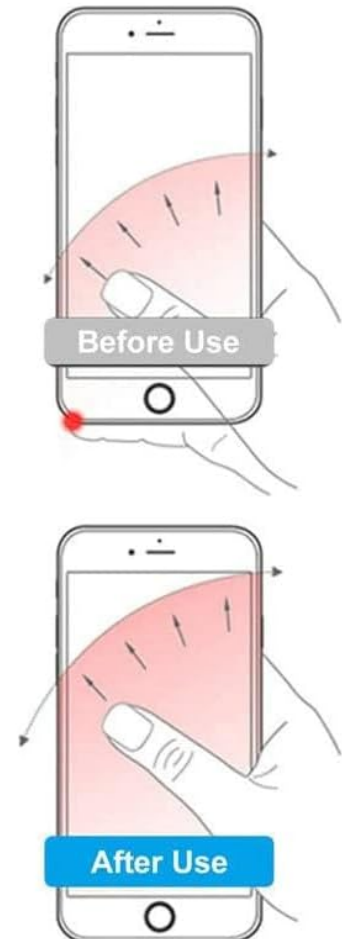


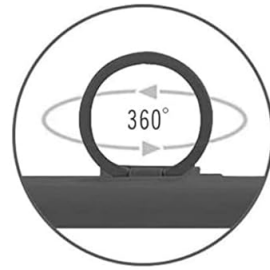
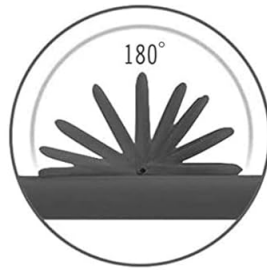
Image demonstrating the use of the integrated ring holder for one-hand operation, showing how it allows for extended reach across the phone screen.

## 4.2. Magnetic Car Mount Compatibility

The metal plate within the ring holder is compatible with magnetic car mounts, allowing for convenient hands-free use in your vehicle.

**Note: A magnetic car mount is not included with this product. This product does not support wireless charging when the ring holder is attached or when using a magnetic car mount.**





## SUPPORT MAGNETIC CAR MOUNT

Not include magnetic car mount,  
not support wireless charging.



Image depicting the phone case with its ring holder supporting magnetic car mounts, showing the 360-degree rotation and 180-degree flip capabilities of the ring.

## 5. MAINTENANCE

To maintain the appearance and functionality of your phone case and screen protector:

- **Cleaning the Case:** Wipe the phone case regularly with a soft, damp cloth. For stubborn dirt, a mild soap solution can be used, followed by thorough drying. Avoid harsh chemicals or abrasive materials.
- **Cleaning the Screen Protector:** Use a microfiber cloth to gently wipe the screen protector. For smudges, a screen cleaner spray designed for electronics can be applied to the cloth (not directly to the screen) and then wiped.
- **Avoid Extreme Conditions:** Do not expose the product to extreme temperatures or direct sunlight for prolonged periods, as this may affect material integrity and color.

## 6. TROUBLESHOOTING

- **Screen Protector Bubbles:** If bubbles persist after installation, gently lift the nearest edge of the protector and reapply, pushing the bubble out with a soft cloth. Small bubbles may disappear naturally within 24-48 hours.
- **Ring Holder Adhesion:** If the ring holder becomes loose, ensure the surface was clean and dry before application. Reapply with a new adhesive if necessary, ensuring firm pressure and adequate

curing time.

- **Case Fit Issues:** Ensure your phone model is indeed the Mobiwire Smart V25. If the case does not fit correctly, double-check the phone's positioning within the case.



## 7. SPECIFICATIONS


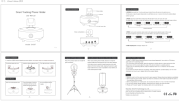

Feature	Detail
Product Dimensions	0.39 x 0.39 x 0.39 inches
Item Weight	2.46 ounces
Special Features	360 Rotating Ring, Car Magnetic Fixing, Stylish Design
Other Display Features	Wireless (Note: Wireless charging not supported with ring holder)
Form Factor	Basic Case
Color	IMDH-HTT (Reflective Light Design)
Materials	Hard PC, Soft Silicone, Tempered Glass

## 8. WARRANTY AND SUPPORT

Specific warranty information for this product is not provided in the available documentation. For any product-related inquiries, technical support, or assistance, please refer to the retailer or your point of purchase. Please retain your proof of purchase for any potential support claims.

### Related Documents - Mobiwire Smart V25

 <p>Mobile Appearance picture</p> <p>Manufacturer: MobiWire S45</p> <p>Manufacturer: Trademark</p> <p>Model: S45</p> <p>1</p>	<p><a href="#">MobiWire Doli3 User Manual: Quick Start, Features, and Specifications</a></p> <p>Comprehensive user manual for the MobiWire Doli3 mobile phone, covering quick start guide, menu functions, accessories, FCC regulations, SAR information, and technical specifications.</p>
 <p>1</p>	<p><a href="#">Mobiwire S241 User Manual: Comprehensive Guide to Features and Operation</a></p> <p>Explore the Mobiwire S241 feature phone with this detailed user manual. Learn about its functions, settings, maintenance, and safety precautions for optimal use.</p>

<div><p>Mobile Appearance picture</p><p>Manufacturer: Mobivize Manufacturer trademark: Model: H4C2000 or H4C4000</p><p>1</p></div>	<p><a href="#">MobiWire Hinto 4G User Manual</a></p> <p>User manual for the MobiWire Hinto 4G mobile phone, covering appearance, functions, safety, FCC regulations, SAR, and technical specifications.</p>
<div></div>	<p><a href="#">Sricam Smart Tracking Phone Holder SH007 User Manual</a></p> <p>Comprehensive user manual for the Sricam SH007 Smart Tracking Phone Holder, covering product features, installation, button operations, usage modes, and important notes for optimal performance.</p>
<div><p>Ring Plug-In for HS4</p><p>On a Ring-HomeSeer system, the Ring Plug-In provides a way to integrate Ring cameras, doorbells, and alarm systems into your smart home automation setup.</p><p>Introduction</p><p>Ring Plug-In for HS4 is a plug-in module that connects the Ring Plug-In to the HomeSeer HS4 system. It is designed to be used with the Ring Plug-In for HS4 system. The Ring Plug-In for HS4 system is a plug-in module that connects the Ring Plug-In to the HomeSeer HS4 system. It is designed to be used with the Ring Plug-In for HS4 system.</p><p>Installation</p><p>1. Connect the Ring Plug-In to the HomeSeer HS4 system. The Ring Plug-In for HS4 system is a plug-in module that connects the Ring Plug-In to the HomeSeer HS4 system. It is designed to be used with the Ring Plug-In for HS4 system.</p><p>2. Connect the Ring Plug-In to the HomeSeer HS4 system. The Ring Plug-In for HS4 system is a plug-in module that connects the Ring Plug-In to the HomeSeer HS4 system. It is designed to be used with the Ring Plug-In for HS4 system.</p><p>3. Connect the Ring Plug-In to the HomeSeer HS4 system. The Ring Plug-In for HS4 system is a plug-in module that connects the Ring Plug-In to the HomeSeer HS4 system. It is designed to be used with the Ring Plug-In for HS4 system.</p><p>4. Connect the Ring Plug-In to the HomeSeer HS4 system. The Ring Plug-In for HS4 system is a plug-in module that connects the Ring Plug-In to the HomeSeer HS4 system. It is designed to be used with the Ring Plug-In for HS4 system.</p><p>5. Connect the Ring Plug-In to the HomeSeer HS4 system. The Ring Plug-In for HS4 system is a plug-in module that connects the Ring Plug-In to the HomeSeer HS4 system. It is designed to be used with the Ring Plug-In for HS4 system.</p><p>6. Connect the Ring Plug-In to the HomeSeer HS4 system. The Ring Plug-In for HS4 system is a plug-in module that connects the Ring Plug-In to the HomeSeer HS4 system. It is designed to be used with the Ring Plug-In for HS4 system.</p><p>7. Connect the Ring Plug-In to the HomeSeer HS4 system. The Ring Plug-In for HS4 system is a plug-in module that connects the Ring Plug-In to the HomeSeer HS4 system. It is designed to be used with the Ring Plug-In for HS4 system.</p><p>8. Connect the Ring Plug-In to the HomeSeer HS4 system. The Ring Plug-In for HS4 system is a plug-in module that connects the Ring Plug-In to the HomeSeer HS4 system. It is designed to be used with the Ring Plug-In for HS4 system.</p><p>9. Connect the Ring Plug-In to the HomeSeer HS4 system. The Ring Plug-In for HS4 system is a plug-in module that connects the Ring Plug-In to the HomeSeer HS4 system. It is designed to be used with the Ring Plug-In for HS4 system.</p><p>10. Connect the Ring Plug-In to the HomeSeer HS4 system. The Ring Plug-In for HS4 system is a plug-in module that connects the Ring Plug-In to the HomeSeer HS4 system. It is designed to be used with the Ring Plug-In for HS4 system.</p></div>	<p><a href="#">Ring Plug-In for HS4: User Guide and Integration</a></p> <p>A comprehensive guide to installing, configuring, and using the Ring Plug-In for HomeSeer HS4. Learn how to integrate Ring cameras, doorbells, and alarm systems into your smart home automation setup.</p>
<div><p><b>hama</b> 00196779</p><p>Smart Move Booklet Case</p><p>Operating instruction</p><ol style="list-style-type: none"><li>Insert the tablet into the Smart Move Booklet Case. The Smart Move Booklet Case is a protective case for your tablet. It is designed to be used with the Smart Move Booklet Case. It is designed to be used with the Smart Move Booklet Case.</li><li>Insert the tablet into the Smart Move Booklet Case. The Smart Move Booklet Case is a protective case for your tablet. It is designed to be used with the Smart Move Booklet Case. It is designed to be used with the Smart Move Booklet Case.</li><li>Insert the tablet into the Smart Move Booklet Case. The Smart Move Booklet Case is a protective case for your tablet. It is designed to be used with the Smart Move Booklet Case. It is designed to be used with the Smart Move Booklet Case.</li><li>Insert the tablet into the Smart Move Booklet Case. The Smart Move Booklet Case is a protective case for your tablet. It is designed to be used with the Smart Move Booklet Case. It is designed to be used with the Smart Move Booklet Case.</li><li>Insert the tablet into the Smart Move Booklet Case. The Smart Move Booklet Case is a protective case for your tablet. It is designed to be used with the Smart Move Booklet Case. It is designed to be used with the Smart Move Booklet Case.</li><li>Insert the tablet into the Smart Move Booklet Case. The Smart Move Booklet Case is a protective case for your tablet. It is designed to be used with the Smart Move Booklet Case. It is designed to be used with the Smart Move Booklet Case.</li><li>Insert the tablet into the Smart Move Booklet Case. The Smart Move Booklet Case is a protective case for your tablet. It is designed to be used with the Smart Move Booklet Case. It is designed to be used with the Smart Move Booklet Case.</li><li>Insert the tablet into the Smart Move Booklet Case. The Smart Move Booklet Case is a protective case for your tablet. It is designed to be used with the Smart Move Booklet Case. It is designed to be used with the Smart Move Booklet Case.</li><li>Insert the tablet into the Smart Move Booklet Case. The Smart Move Booklet Case is a protective case for your tablet. It is designed to be used with the Smart Move Booklet Case. It is designed to be used with the Smart Move Booklet Case.</li><li>Insert the tablet into the Smart Move Booklet Case. The Smart Move Booklet Case is a protective case for your tablet. It is designed to be used with the Smart Move Booklet Case. It is designed to be used with the Smart Move Booklet Case.</li></ol><p>Do not use the Smart Move Booklet Case for other purposes. The Smart Move Booklet Case is a protective case for your tablet. It is designed to be used with the Smart Move Booklet Case. It is designed to be used with the Smart Move Booklet Case.</p></div>	<p><a href="#">Hama Smart Move Booklet Case 00196779 - Operating Instructions</a></p> <p>Concise operating instructions for the Hama Smart Move Booklet Case (Model 00196779), detailing how to insert your smartphone and its protective features. Includes safety warnings regarding magnetic strip cards.</p>