

## wanan CFL-ZD01

# wanan 47.2" Lift Top Coffee Table Instruction Manual (Model: CFL-ZD01)

Your guide to assembly, operation, and care for your versatile coffee table.

## 1. SAFETY INFORMATION

---

Please read and understand all instructions before assembly and use. Keep this manual for future reference.

- **Weight Capacity:** Do not exceed the maximum weight recommendation of **160 pounds** on the fully unfolded tabletop.
- **Assembly:** Ensure all parts are securely fastened before use. Do not overtighten screws to prevent damage to the wood.
- **Operation:** When unfolding the table, always raise the lower table section first to prevent damage to the mechanism or table surface.
- **Children and Pets:** Keep children and pets away from the table during assembly and when operating the lift mechanism. Small parts can be a choking hazard.
- **Placement:** Place the coffee table on a flat, stable surface to prevent tipping.

## 2. PACKAGE CONTENTS

---

Before beginning assembly, verify that all components and hardware are present. Refer to the included assembly guide for a detailed list.

- Table components (panels, legs, doors)
- Lift mechanism hardware
- Assembly hardware (screws, dowels, etc.)
- Installation tool (screwdriver)
- Assembly Guide

If any parts are missing or damaged, please contact customer support immediately for free replacement parts.

### 3. ASSEMBLY INSTRUCTIONS

---

Assembly typically takes approximately one hour with two people. Follow the numbered steps in the provided assembly guide carefully.

1. **Unpack and Identify Parts:** Lay out all components on a clean, soft surface (e.g., a blanket or carpet) to prevent scratches. Identify each part using the labels in the assembly guide.
2. **Assemble the Base Frame:** Connect the side panels and bottom support panels according to the guide. Ensure all connections are snug.
3. **Install the Lift Mechanism:** Carefully attach the heavy-duty metal lift mechanism to the designated areas within the table frame. Pay close attention to orientation.
4. **Attach Tabletop Sections:** Secure the main tabletop sections to the lift mechanism.
5. **Install Sliding Barn Doors:** Mount the sliding tracks and attach the barn doors. Ensure they slide smoothly.
6. **Add Shelving:** Insert any internal shelves into their designated slots.
7. **Final Check:** Once assembled, gently test the lift mechanism and sliding doors to ensure proper function. Verify all screws are tightened.

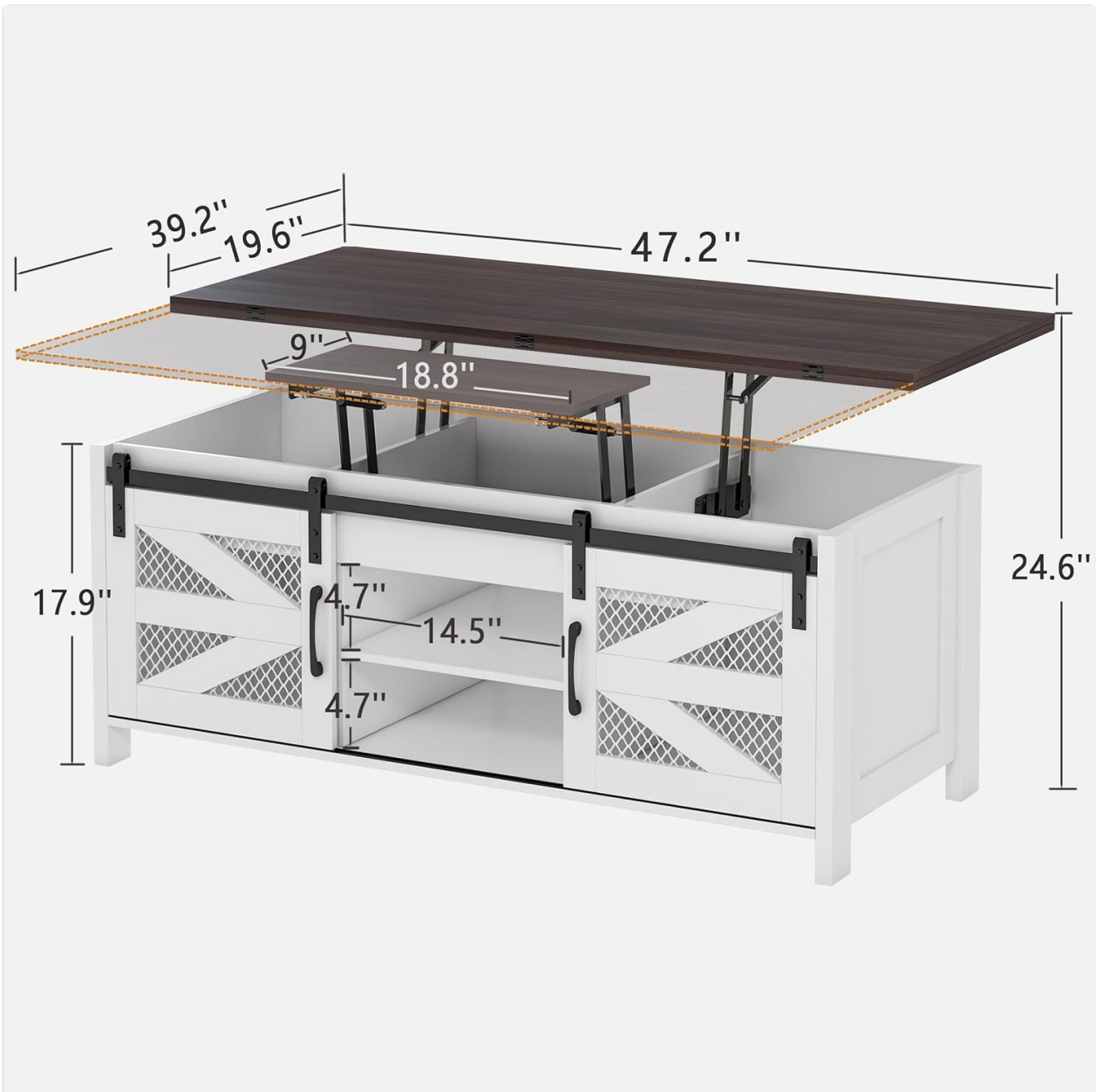


Figure 3.1: Table dimensions and internal structure.



1. Hidden compartments

2. Open shelf

3. Sliding Darn Door

Figure 3.2: Key features including hidden compartments (1), open shelf (2), and sliding barn doors (3).

## 4. OPERATING INSTRUCTIONS

---

The wanan Lift Top Coffee Table offers a versatile 4-in-1 design, transforming from a compact coffee table to a dining or gaming surface.

### 4.1. Modes of Operation

- **Regular Coffee Table:** When fully folded, the table serves as a standard coffee table, ideal for living room use.
- **Two-Way Lift Top (Workspace):** Partially extend one side of the tabletop to create an elevated surface suitable for working on a laptop or enjoying snacks. This configuration provides an independent workspace for 2 people.
- **Dining/Gaming Table:** Fully extend both sides of the tabletop to transform it into a larger surface, accommodating 4-8 people for dining or gaming.



Figure 4.1: The 4-in-1 functionality: Regular Coffee Table, Two-Way Lift Top, and Dining Table.

## 4.2. Extending the Tabletop

1. **Initiate Lift:** Gently pull up on the desired section of the tabletop. The spring-assisted mechanism will begin to lift.
2. **Extend:** Once lifted, slide the tabletop section outwards to extend the surface.
3. **Important Note for Full Extension:** When fully unfolding the table, it is crucial to raise the smaller, inner board first before extending the main tabletop sections. Failure to do so may cause damage to the table.

**When fully unfolded, please raise the small board first**

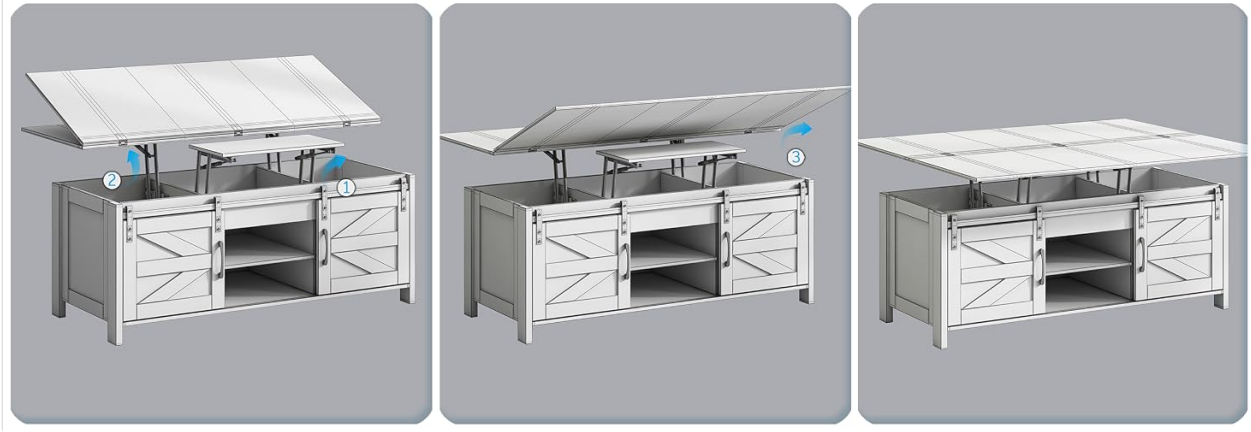


Figure 4.2: Step-by-step guide for fully unfolding the table, emphasizing lifting the inner board first.



Figure 4.3: Table in fully extended dining configuration.



Figure 4.4: Table in two-way lift top configuration, suitable for a workspace.

### 4.3. Utilizing Storage

The table features hidden compartments beneath the lift-top sections, an open central shelf, and two sliding barn doors for additional storage.

- **Hidden Compartments:** Lift the tabletop sections to access concealed storage for remotes, magazines, or other items.
- **Open Shelf:** The central open shelf is ideal for decorative items or frequently accessed essentials.
- **Sliding Barn Doors:** Slide the barn doors to reveal additional storage space, perfect for organizing larger items or keeping clutter out of sight.

## 5. MAINTENANCE

---

Proper care will ensure the longevity and appearance of your coffee table.

- **Cleaning:** Wipe surfaces with a soft, damp cloth. Avoid abrasive cleaners or harsh chemicals that can damage the finish. The table is stain-resistant.
- **Spills:** Clean spills immediately to prevent staining.

- **Fasteners:** Periodically check all screws and fasteners to ensure they remain tight. Retighten as necessary.
- **Lift Mechanism:** The lift mechanism is designed for reliability and low maintenance. Avoid forcing the mechanism if it feels stiff.
- **Sunlight and Heat:** Avoid prolonged exposure to direct sunlight or extreme heat, which can cause fading or warping.

## 6. TROUBLESHOOTING

---

If you encounter any issues, refer to the following common solutions.

- **Tabletop not lifting smoothly:** Ensure no objects are obstructing the lift mechanism. Check that all assembly screws for the mechanism are properly tightened.
- **Tabletop feels wobbly:** Verify that all frame and leg screws are securely tightened. Ensure the table is placed on a level surface.
- **Screws penetrating wood:** During assembly, use appropriate force when tightening screws. Overtightening can cause screws to go through the engineered wood. If this occurs, contact customer support for guidance.
- **Missing or damaged parts:** If your item arrives damaged, scratched, or with missing parts, please contact customer support immediately for free replacement parts.

## 7. SPECIFICATIONS

---

Feature	Detail
Brand	wanan
Model Name	Lift Top Coffee Table
Model Number	CFL-ZD01
Product Dimensions (Folded)	19.6"D x 47.2"W x 17.9"H
Product Dimensions (Extended)	47.2"D x 39.2"W (approximate, for dining)
Item Weight	84 Pounds
Maximum Weight Recommendation	160 Pounds (fully unfolded tabletop)
Frame Material	Engineered Wood
Top Material Type	Engineered Wood
Handle Material	Metal
Color	White (Base), Milky White (Top/Handles)
Table Extension Mechanism	Lift Top, Slide-out
Is Foldable	Yes
Is Stain Resistant	Yes
Included Components	Assembly Guide, Installation Tool

Feature	Detail
Tools Recommended For Assembly	Screw Driver (included)

## 8. WARRANTY AND SUPPORT

---

Your wanan Lift Top Coffee Table is designed for durability and functionality. We stand by the quality of our product.

- **Damaged or Missing Parts:** In the event your item arrives damaged, scratched, or with missing parts, please contact our customer service team. We will provide free replacement parts.
- **Online Installation Guidance:** Additional online installation guidance is available to assist with assembly.
- For any questions, concerns, or support needs, please refer to the contact information provided with your purchase or visit the official wanan brand store online.