



Manuals.plus /

› Dryhsip /

› Dryhsip 5-in-1 Hair Styler & Air Dryer Brush User Manual (Model WT-638-ZZPK)

Dryhsip WT-638-ZZPK

Dryhsip 5-in-1 Hair Styler & Air Dryer Brush User Manual

MODEL: WT-638-ZZPK

[Introduction](#) [Safety Information](#) [Product Components](#) [Setup](#) [Operating Instructions](#) [Maintenance](#)
[Troubleshooting](#) [Specifications](#) [Warranty & Support](#)

1. Introduction

Thank you for choosing the Dryhsip 5-in-1 Hair Styler & Air Dryer Brush. This versatile styling tool is designed to provide multiple hair styling options, including drying, curling, straightening, and volumizing, all while utilizing negative ionic technology to reduce frizz and enhance shine. Please read this manual thoroughly before use to ensure safe and effective operation.

2. Safety Information

Safety warnings are included in the product's packaging and documentation. Always follow these guidelines to prevent injury or damage to the device. Keep the appliance away from water. Do not use it in a bathroom or near a water source. Unplug the device when not in use.

3. Product Components

The Dryhsip 5-in-1 Hair Styler comes with a main unit and several interchangeable attachments for various styling needs:

- **Main Unit:** The core device with power and temperature controls.
- **Drying Nozzle:** For quick drying of wet hair.
- **Smoothing Brush:** For straightening and smoothing hair.
- **Round Brush:** For volumizing and creating soft waves.
- **Left Curling Barrel:** For creating curls that wrap to the left.
- **Right Curling Barrel:** For creating curls that wrap to the right.



Figure 1: All components of the Dryhsip 5-in-1 Hair Styler. This image displays the main unit, drying nozzle, smoothing brush, round brush, and both left and right curling barrels.

4. Setup

4.1 Attaching and Detaching Accessories

1. **Select Attachment:** Choose the desired styling attachment (drying nozzle, brushes, or curling barrels).
2. **Align and Insert:** Align the attachment with the main unit and insert it firmly.
3. **Secure:** Twist the attachment clockwise until it clicks into place, ensuring it is securely locked.
4. **Detach:** To remove an attachment, press and hold the release button on the main unit, then twist the attachment counter-clockwise and pull it off.

4.2 Powering On/Off and Adjusting Settings

The main unit features a rotating switch at the base for power and heat/speed settings:

- **OFF:** Turns the device off.

- **LOW:** Low heat, low speed.
- **MED:** Medium heat, medium speed.
- **HIGH:** High heat, high speed.

Rotate the switch to the desired setting. The device also includes a cool shot button for setting styles with a burst of cool air.

Your browser does not support the video tag.

Video 1: Demonstrates the unboxing and attachment of various components of the Dryhsip 5-in-1 Air Styler, showing how to secure each head to the main unit.

5. Operating Instructions

5.1 Drying Hair

Attach the drying nozzle to the main unit. Select a heat/speed setting. Use the nozzle to quickly dry excess water from your hair before styling. For best results, rough dry hair until it is about 80% dry.

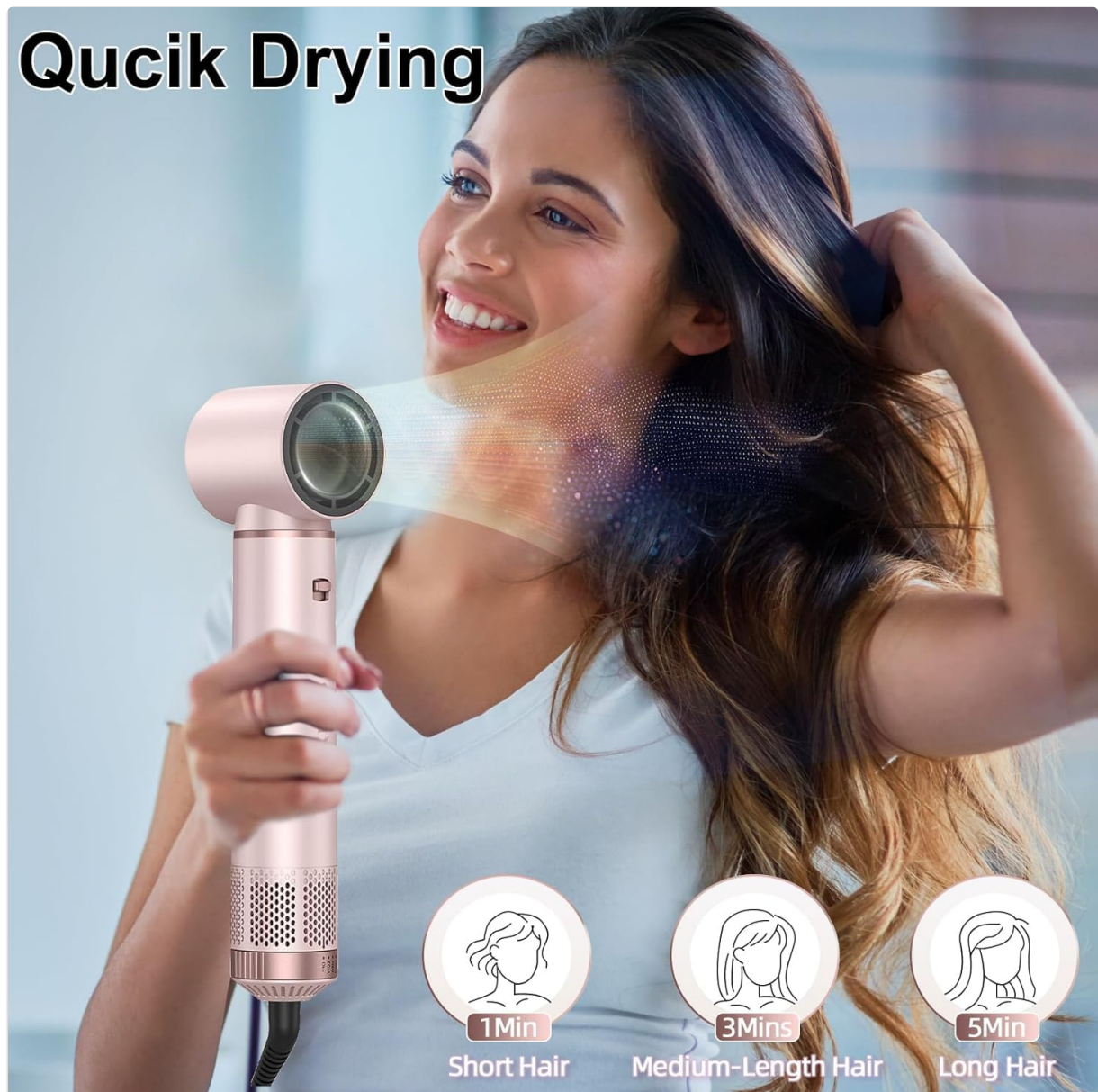


Figure 2: The main unit with the drying nozzle attached, illustrating its use for quick hair drying.

5.2 Straightening Hair

Attach the smoothing brush. Ensure hair is damp or dry. Section your hair and slowly glide the brush from roots to ends. The negative ionic technology will help reduce frizz and leave hair smooth.



Figure 3: A user demonstrating the straightening function with the smoothing brush attachment, resulting in sleek, straight hair.

5.3 Volumizing Hair

Attach the round brush. Work with damp, sectioned hair. Place the brush near the roots and roll it downwards, following with the airflow to create volume and soft ends.

5 in 1 Hairstyles

Straight, Voluminous, and curly



Left curling iron (32mm)
Right curling iron (32mm)



75X75mm Round Brush
Oval Styling Brush



Uniform Air Round Nozzle



Straightener Brush

Figure 4: Various hairstyles achieved with the 5-in-1 styler, including straight, voluminous, and curly looks, highlighting the versatility of the attachments.

5.4 Curling Hair

Select either the left or right curling barrel. Ensure hair is damp (about 80% dry). Hold a small section of hair (approx. 10cm/3.93") near the barrel. The Coanda effect will automatically wrap the hair around the barrel. Hold for 5-10 seconds, then pull down to release the curl. Use the cool shot to set the curl.

32mm Left & Right Curling iron

Wraps curls sets automatically
with coanda Technology

Place a lock of hair
near the curler and
it automatically
wraps, curls, and sets



Figure 5: The 32mm left and right curling barrels demonstrating the automatic hair wrapping feature for effortless curls.



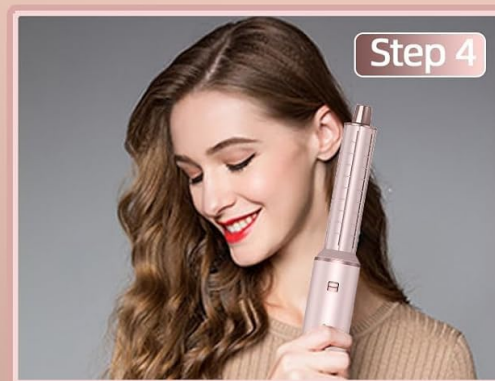
Step 1
Gently wrap the hair around barrel from the end.



Step 2
Wrap hair from the end and roll to the middle then unroll it. Repeat for 2-3 times until the roll to the root.



Step 3
Hold for 5-10 seconds to style the curls. Longer hair may be needed for thicker hair.



Step 4
Unravel the hair by twisting to create beautiful volume loose curls.

Figure 6: A visual step-by-step guide detailing the process of curling hair using the Dryhsip 5-in-1 Hair Styler, from wrapping to releasing the curl.

Your browser does not support the video tag.

Video 2: A demonstration of the various styling capabilities of the Dryhsip 5-in-1 Hair Styler, showcasing its use for drying, curling, and straightening different hair types.

6. Maintenance

Regular cleaning and maintenance will prolong the life of your Dryhsip 5-in-1 Hair Styler.

- **Unplug Before Cleaning:** Always ensure the device is unplugged from the power outlet and has cooled down completely before cleaning.
- **Clean Main Unit:** Wipe the main unit with a soft, damp cloth. Do not use abrasive cleaners or immerse the unit in water.
- **Clean Attachments:** Remove any hair tangled in the brushes or barrels. Use a soft brush or cloth to clean the surfaces. For stubborn residue, a slightly damp cloth can be used. Ensure attachments are completely dry before reattaching or storing.
- **Store Properly:** Store the device and its attachments in a dry, safe place, away from direct sunlight and moisture.

7. Troubleshooting

If you encounter any issues with your Dryhsip 5-in-1 Hair Styler, refer to the following common problems and solutions:

- **Device Not Turning On:**

- Ensure the power cord is securely plugged into a working outlet.
- Check the rotating switch at the base of the unit to ensure it is not in the 'OFF' position.

- **Weak Airflow or Heat:**

- Verify that the air intake filter at the bottom of the main unit is clean and free of debris.
- Ensure the selected heat/speed setting is appropriate (e.g., 'HIGH' for maximum performance).

- **Attachments Not Staying Secure:**

- Make sure the attachment is fully inserted and twisted clockwise until it clicks into place.
- Inspect the locking mechanism for any damage or obstruction.

- **Hair Not Curling Effectively:**

- Ensure hair is damp (about 80% dry) for optimal Coanda effect.
- Use smaller sections of hair (approx. 10cm/3.93").
- Hold the hair near the barrel for the recommended 5-10 seconds.

8. Specifications

Feature	Detail
Product Dimensions	10.24 x 2.76 x 9.45 inches
Item Model Number	WT-638-ZZPK
Weight	1.76 Pounds
Brand	Dryhsip
Color	Pink/Gold
Material	Plastic
Wattage	800 watts
Power Source	Corded Electric



Figure 7: A parameter table illustrating the dimensions of the main unit and each interchangeable attachment.

9. Warranty and Support

For warranty information or product support, please refer to the documentation included with your purchase or contact Dryhsip customer service. Keep your proof of purchase for any warranty claims.

9.1 Legal Disclaimer

Statements regarding dietary supplements have not been evaluated by the FDA and are not intended to diagnose, treat, cure, or prevent any disease or health condition.