

## VANTRUE S1 Pro 1CH

# Vantrue S1 Pro Dash Cam Instruction Manual

Model: S1 Pro 1CH

Brand: VANTRUE

## 1. INTRODUCTION

This manual provides detailed instructions for the installation, operation, maintenance, and troubleshooting of your Vantrue S1 Pro Dash Cam. Please read this manual thoroughly before using the device to ensure proper functionality and safety.

The Vantrue S1 Pro is a high-performance front mini dash cam designed to capture crystal-clear footage with its 2.7K resolution and 2.5K@60FPS recording capabilities. It features advanced technologies such as STARVIS 2 for superior night vision, PlatePix™ for enhanced license plate clarity, and an Advanced Driver Assistance System (ADAS) for improved driving safety. With voice control, LTE support for live monitoring, built-in WiFi and GPS, and various 24/7 parking modes, the S1 Pro offers comprehensive vehicle surveillance and recording.

## 2. PACKAGE CONTENTS

Please verify that all items listed below are included in your package:

- Vantrue S1 Pro 1CH Dash Cam
- Car Charger
- Quick Guide
- Crowbar
- Cable Clip
- Charging Cable (Type-C USB Data Cable)
- GPS Mount
- 3M Adhesive Stickers
- Electrostatic Stickers (x2)

## 3. SETUP AND INSTALLATION

Follow these steps to properly install your Vantrue S1 Pro Dash Cam:

**1. Install the Electrostatic Sticker:**

First, wipe the adhesive aid onto the windshield where you intend to mount the dash cam. Peel off the side labeled '1' of the electrostatic sticker and attach it to the windshield. Smooth out any air bubbles. Then, remove the side labeled '2' of the electrostatic sticker. This sticker helps in easy removal of the dash cam mount without leaving residue.

**2. Mount the Dash Cam:**

Remove the 3M adhesive protective film from the dash cam mount. Position the camera on the electrostatic sticker at your desired location, typically behind the rearview mirror to ensure it does not obstruct your view. Press firmly to secure.

**3. Hide Wiring:**

Use the provided crowbar tool to tuck excess wires into the gap between the windshield and the roof lining. This keeps the installation neat and prevents wires from dangling.

**4. Route Wires Along A-Pillar:**

Lead the wires down along the A-pillar (the frame between the windshield and the front side window). Carefully hide the wires within the trim using the crowbar.

**5. Connect to Power:**

Connect the charging cable to the dash cam and plug the car charger into your vehicle's cigarette lighter socket. The dash cam will power on automatically when the vehicle starts.

# Package Contents



Packing Box



Vantrue  
S1 Pro 1CH



User Guide



GPS Mount



USB Data  
Cable(3.3ft)



Car Charger  
Cable(11.5ft)



Cable Clip\*3



Adhesive  
Stickers



Crowbar



Electrostatic  
sticker\*2

## Optional Accessories



CPL Filter



LTE Module



Hardwire Kit



Remote Control

Image: The Vantrue S1 Pro Dash Cam installed discreetly behind the rearview mirror, demonstrating its compact and hidden design.

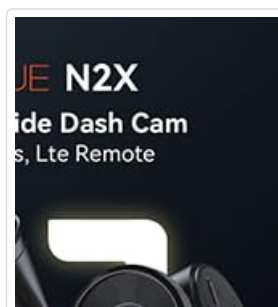


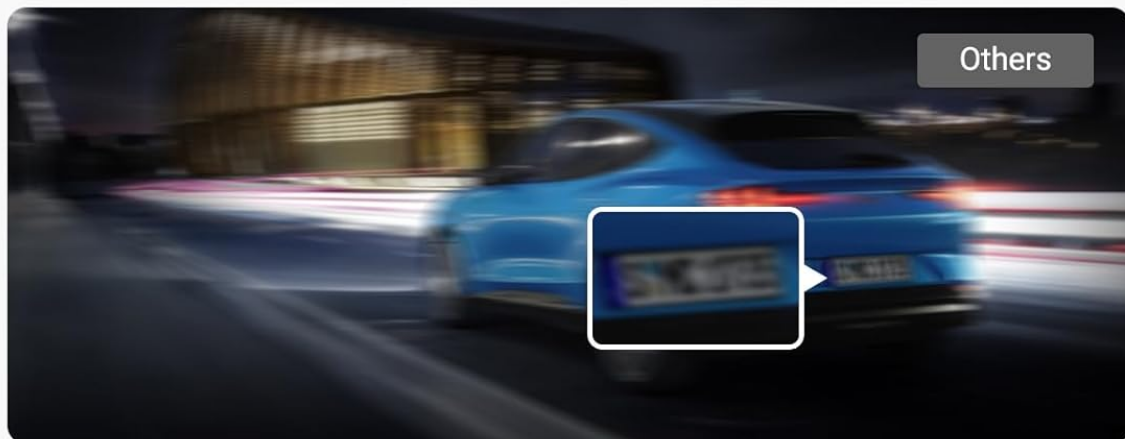
Image: Visual guide illustrating the simple installation of the dash cam, showing its placement and connection to the car charger.

Video: Official Vantrue S1 Pro 1-CH Installation Guide. This video demonstrates the step-by-step process of installing the dash cam, including applying the electrostatic sticker, mounting the device, and routing the power cable for a clean setup.

## 4. OPERATING INSTRUCTIONS

### 4.1 Crystal-Clear 2.5K@60FPS Recording

The S1 Pro records at 2.5K resolution at 60 frames per second (FPS), double the standard 30FPS. This higher frame rate significantly reduces motion blur, capturing critical details like license plates and road signs even during high-speed driving or sudden braking. The STARVIS 2 sensor and F1.8 aperture enhance clarity in various lighting conditions.



## License Plate Recognition Enhanced with **STARVIS 2 + PlatePix™** Technology

VANTRUE Exclusive PlatePix™ Tech + STARVIS 2 deliver ultra-crisp license plate capture in darkness, sharpening details via dynamic range/ 3DNR at high speeds or backlight.

Image: A visual comparison demonstrating the superior clarity of 60FPS recording compared to 30FPS, particularly for fast-moving objects like license plates.

## 4.2 PlatePix™ Night Vision & HDR

Vantrue's proprietary PlatePix™ technology, combined with the STARVIS 2 IMX675 sensor, optimizes license plate capture in low light or backlit conditions, offering 1.5X enhanced clarity. High Dynamic Range (HDR) technology balances extreme light and dark areas, accurately restoring details in high-contrast scenarios such as nighttime roads or tunnel entrances/exits.

## Faster 5GHz WiFi & GPS

Seamlessly view, download and share dashboard videos directly to your smartphone over WiFi. Supports you to wirelessly update your camera's firmware and instantly post clips to social media.

Download on the App Store

GET IT ON Google Play

Vantrue APP

400% FASTER

5GHz Wi-Fi 8MB/s

2.4GHz 2MB/s

5GHz/2.4GHz WiFi

OTA Upgraded

GPS Tracking

Mileage Statistics

75 MP/H

Image: A comparison illustrating the improved readability of license plates using PlatePix™ and STARVIS 2 technology, especially in challenging lighting.



### 4.3 24/7 Live Monitoring via Vantrue LTE

With an optional Vantrue LTE module (ASIN: B0F1ZY4Y3S, sold separately) and a hardwire kit (ASIN: B083XB8T7T, sold separately), you can monitor your vehicle in real-time, whether it's moving or parked. Receive instant collision alerts and share time-stamped videos directly with insurers. Multi-account access allows for parental oversight or fleet management.

## Hidden Design

Features a sleek hidden design for compact discreet installation without blocking your view



Image: A user receiving a notification on their smartphone from the dash cam, demonstrating the 24/7 live monitoring feature.

### 4.4 Advanced Driver Assistance System (ADAS) & Voice Control

The advanced ADAS system provides real-time warnings for lane departure, forward collision, and pedestrian detection, enhancing driving safety. The S1 Pro also supports 12-language voice commands, allowing hands-free operation for tasks like

