



Manuals.plus /

› Joaxswe /

› Joaxswe 2-Drawer Shoe Storage Cabinet (Natural Oak) Instruction Manual

Joaxswe JO-BFSC-Wood

Joaxswe 2-Drawer Shoe Storage Cabinet (Natural Oak) Instruction Manual

Model: JO-BFSC-Wood

1. SAFETY INFORMATION

Please read and understand all safety instructions before assembly and use. Failure to follow these instructions may result in injury or product damage.

- Always secure the cabinet to the wall using the provided anti-tipping device to prevent tipping and potential injuries.
- Do not overload the cabinet as it may cause it to tip over.
- Keep the area around the cabinet clear of obstacles to prevent tripping hazards.
- Ensure all screws and fasteners are tightened securely before use. Periodically check for loose connections.

Anti-Tipping Device

Ensuring your family's safety

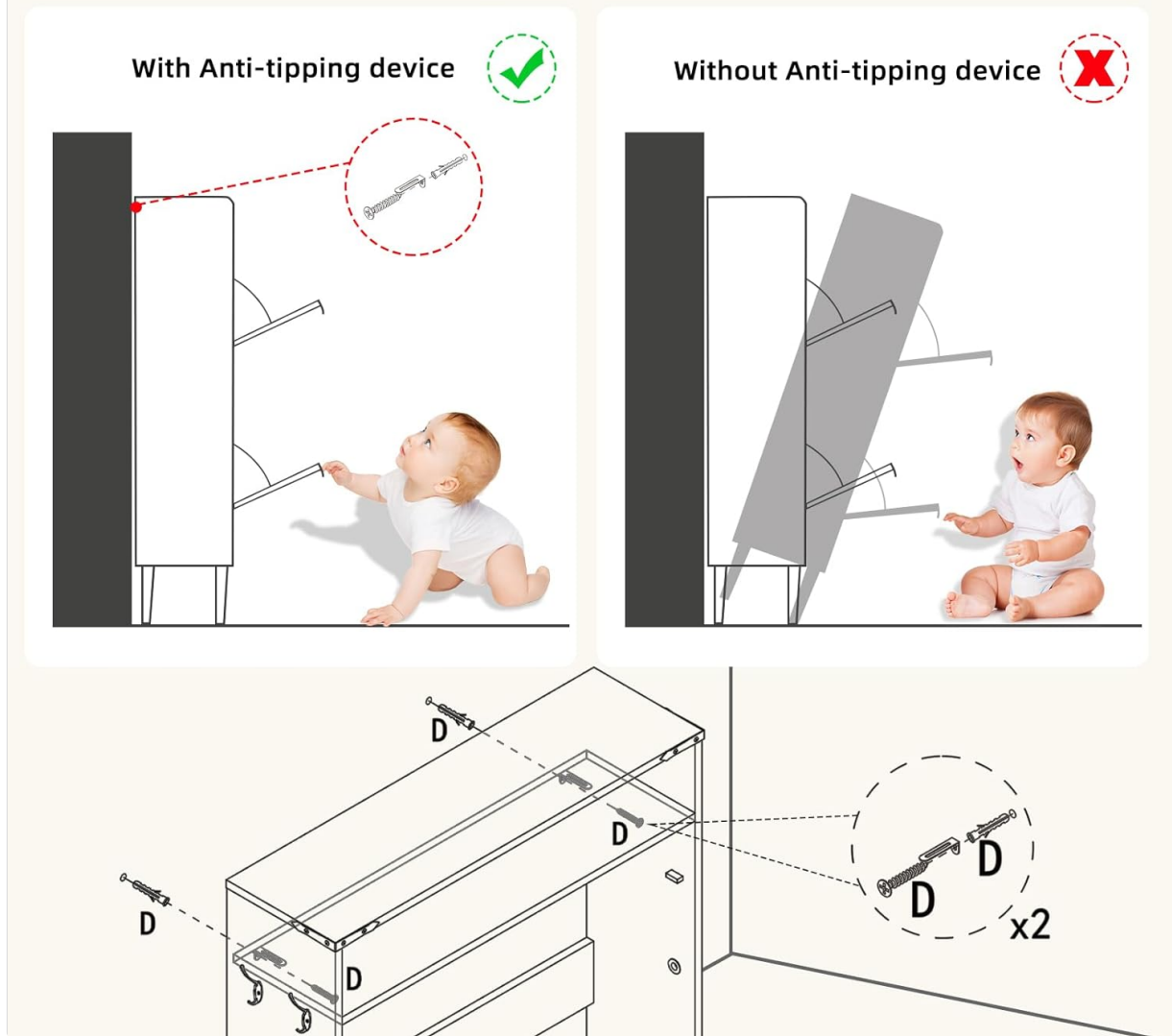


Figure 1: Anti-Tipping Device Installation. This diagram illustrates the correct installation of the anti-tipping device to secure the cabinet to the wall, preventing accidental tipping. It also shows a comparison between a secured cabinet and an unsecured one, highlighting the safety risk for children.

2. PRODUCT OVERVIEW

The Joaxswe 2-Drawer Shoe Storage Cabinet is designed to organize footwear efficiently while adding a stylish touch to your entryway or hallway. Its narrow profile maximizes space without compromising storage capacity.

- **Dimensions:** 9.15"D x 31.5"W x 44.5"H
- **Material:** High-quality Wood
- **Color:** Natural Oak
- **Capacity:** Approximately 16 pairs of shoes (depending on shoe size and style).
- **Features:** Two barn door flip-up drawers, adjustable shelves, two side hooks, open storage top shelf, hollow back design for ventilation.



Figure 2: Product View. The Joaxswe 2-Drawer Shoe Storage Cabinet in Natural Oak, featuring its farmhouse design and top shelf for decorative items or small essentials.



Figure 3: Detailed Features. This image highlights the practical side hooks for hanging items, the ventilation design within the drawers, and the decorative farmhouse pattern on the drawer fronts.

3. SETUP AND ASSEMBLY

The shoe cabinet comes with detailed instructions and all necessary accessories for easy and quick installation. An electric drill is recommended for faster assembly, though a screwdriver can also be used.

Assembly Steps Overview:

1. Unpack all components and verify against the parts list in the included manual. All parts are clearly labeled.
2. Follow the step-by-step diagrams provided in the manual to connect the main frame pieces.
3. Attach the wooden legs to the base of the cabinet.
4. Assemble the flip drawers, ensuring the adjustable shelves are correctly positioned.
5. Install the side hooks as desired.
6. Secure the anti-tipping device to the wall and the cabinet for stability.

Video 1: Assembly Guide. This video provides a visual guide to assembling the shoe storage cabinet, demonstrating the ease of the process and highlighting key steps.

Video 2: Product Assembly and Review. This video showcases the assembly process of the shoe cabinet, including unboxing and step-by-step construction, offering a practical perspective on installation.

4. OPERATING INSTRUCTIONS

The Joaxswe shoe cabinet features two flip-down drawers for easy access and organization of your footwear.

Using the Flip Drawers:

- Gently pull the handle on each drawer to open. The drawer will smoothly flip down, revealing two tiers for shoe storage.
- Place shoes on the tiers. The removable shelves allow for adjustment to accommodate different shoe sizes and styles, including high-tops and boots.
- To close, gently push the drawer back into the cabinet until it is fully upright and secure.



Figure 4: Open Drawer View. The top flip-down drawer is open, displaying shoes neatly organized on its two tiers. This demonstrates the easy access and storage capacity.



Figure 5: Adjustable Shelf. A detailed view of the adjustable shelf mechanism within a drawer, illustrating how it can be moved to accommodate various shoe heights.

5. MAINTENANCE

Proper maintenance will ensure the longevity and appearance of your Joaxswe shoe cabinet.

- **Cleaning:** Wipe the cabinet surfaces with a soft, damp cloth. Avoid harsh chemicals or abrasive cleaners that may damage the finish.
- **Ventilation:** The hollow design on the back promotes air circulation, helping to prevent odors. Ensure the back is not completely blocked against a wall.
- **Floor Clearance:** The 5.12-inch clearance from the ground allows most robotic vacuum cleaners to pass underneath, simplifying floor cleaning.
- **Hardware Check:** Periodically inspect all screws and connections to ensure they remain tight. Tighten any loose hardware as needed.

6. TROUBLESHOOTING

If you encounter any issues with your Joaxswe shoe cabinet, please refer to the following common solutions:

- **Drawers not closing smoothly:** Check for any obstructions inside the drawer or along the tracks. Ensure shoes are properly placed and not protruding. Verify that all assembly screws for the drawer mechanism are tight.
- **Cabinet wobbles:** Confirm that the anti-tipping device is securely installed to the wall and the cabinet. Ensure the cabinet is placed on a flat, level surface. Adjust the leveling feet if present.
- **Missing parts:** If any parts were missing upon delivery, please contact customer support immediately for assistance.

7. SPECIFICATIONS

Feature	Detail
Brand	Joaxswe
Model Name	Natural Oak Shoe Cabine
Item Model Number	JO-BFSC-Wood
Color	Natural Oak
Product Dimensions	9.15"D x 31.5"W x 44.5"H
Item Weight	48.5 Pounds
Material	Wood
Mounting Type	Floor Mount (with anti-tipping device for wall attachment)
Number of Drawers	2 (flip-up)
Special Feature	Adjustable Shelf, Shoe storage
Assembly Required	Yes

8. WARRANTY AND SUPPORT

For any questions, concerns, or support needs regarding your Joaxswe 2-Drawer Shoe Storage Cabinet, please contact customer support.

- **Returns:** This product is eligible for 30-day easy returns. Please refer to your purchase platform's return policy for details.
- **Customer Support:** Contact Lebo-US customer support for assistance with installation, missing parts, or product issues.