



Manuals.plus /

› [Xininyia](#) /

› [Xininyia V69 Smartwatch USB Charging Cable Cord Instruction Manual](#)

Xininyia V69

Xininyia V69 Smartwatch USB Charging Cable Cord Instruction Manual

Model: V69

INTRODUCTION

This manual provides essential instructions for the safe and efficient use of your Xininyia V69 Smartwatch USB Charging Cable Cord. Please read this guide thoroughly before use to ensure optimal performance and longevity of the product.



Figure 1: The Xininyia V69 Smartwatch USB Charging Cable Cord (2-pack).

The package includes two magnetic charging cables, each 60cm in length. These cables are designed for compatibility with various V69 series smartwatches, including AMAZTIM V69, FILIEKEU V69, COLMI V69, Mingtawn V69, and Mingdahn V69 models.

SETUP

To begin charging your smartwatch, follow these steps:

1. **Unpack the Cables:** Carefully remove the two charging cables from their packaging.
2. **Connect to Power Source:** Insert the USB Type-A end of the charging cable into a compatible USB power source. This can be a computer's USB port, a laptop, a power bank, or a wall charger with a USB output.

Safe and Fast Charging



Build-in Short-circuit protection IC

Don't worry about your watch being burned out due to excessive current

safe and reliable



Figure 2: Connect the USB end to a power source such as a laptop, power bank, wall charger, or computer.

3. **Attach to Smartwatch:** Align the magnetic charging pins of the cable with the charging contacts on the back of your V69 smartwatch. The strong magnetic design will ensure a secure connection.

Detail Display

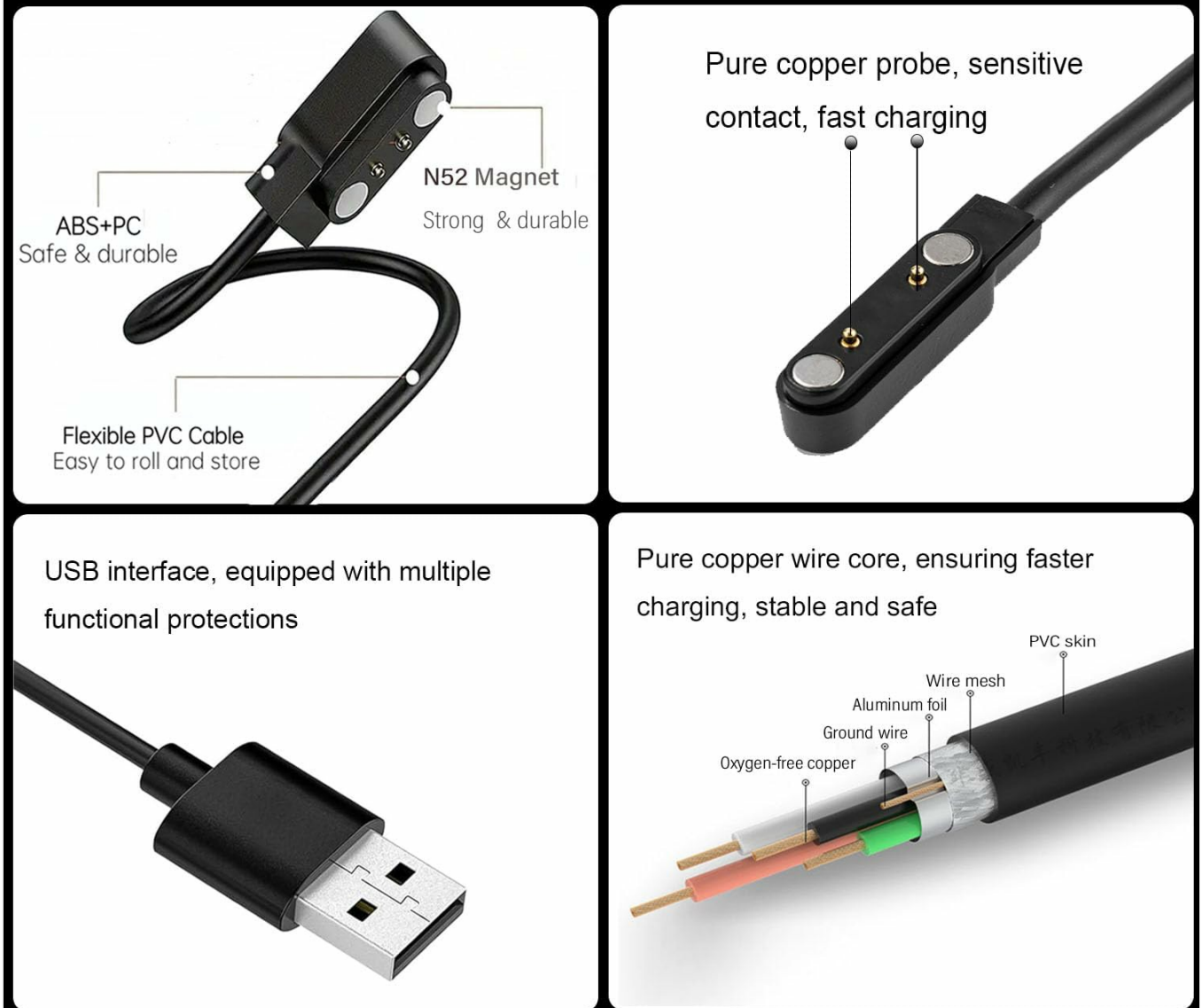


Figure 3: Securely attach the magnetic end to your smartwatch's charging contacts. The cable features built-in short-circuit protection.

4. **Verify Charging:** Once connected, your smartwatch display should indicate that it is charging. Charging typically takes 2 to 3 hours for a full charge.

OPERATING INSTRUCTIONS

The Xininyia V69 charging cable is designed for straightforward operation:

- **Efficient Charging:** The cable utilizes advanced fast charging technology and an optimized circuit design to deliver stable current and voltage to your smartwatch.
- **Magnetic Connection:** The built-in pure copper probe with N52 magnets ensures a strong and reliable connection, preventing accidental disconnections during charging.



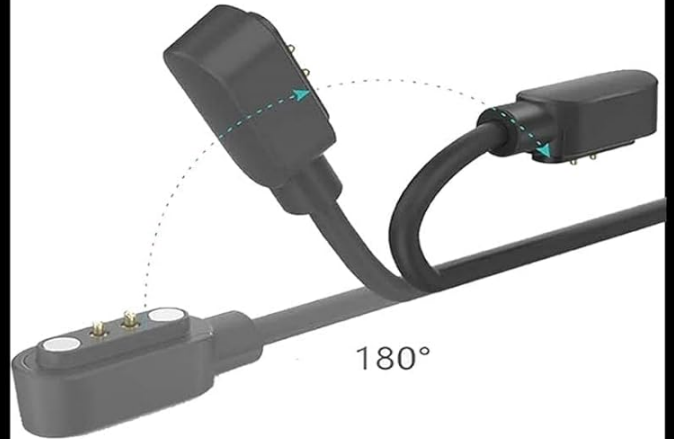
Figure 4: Detailed view of the charging cable's features, highlighting the N52 magnet for strong adsorption and the pure copper probe for sensitive contact and fast charging.

- **Safety Features:** The cable incorporates multiple protection mechanisms, including short-circuit protection, over-voltage protection, and over-current protection, to safeguard your smartwatch battery from overheating and damage.
- **Portability:** Its compact and lightweight design makes it easy to carry, suitable for use at home, in the office, during travel, or in a car.

Portable and Durable



Compact and lightweight



REINFORCED DESIGN, easy to use



Figure 5: The portable design allows for convenient charging in diverse settings.

MAINTENANCE

Proper care will extend the life of your charging cables:

- **Cleaning:** Gently wipe the magnetic charging pins and USB connector with a dry, soft cloth to remove any dust or debris. Do not use liquid cleaners.
- **Storage:** When not in use, store the cables in a cool, dry place, away from direct sunlight and extreme temperatures. The flexible PVC cable is designed for easy rolling and storage.
- **Handling:** Avoid sharp bends or excessive pulling on the cable, especially near the connectors. The reinforced design is tested for over 5000 bends, but careful handling is recommended.

Convenient to Charge



Power bank

Plug the USB port to any USB-enabled devices



Wall charger



Computer



Laptop

Figure 6: The cable features a reinforced design for durability and flexibility.

TROUBLESHOOTING

If you encounter issues with your charging cable, refer to the following common solutions:

- **Smartwatch Not Charging:**

- Ensure the USB end is fully inserted into the power source.
- Check if the power source (e.g., wall adapter, computer port) is functional. Try a different power source.
- Verify that the magnetic pins are clean and making proper contact with the smartwatch charging points.
- Confirm your smartwatch is a compatible V69 model.

- **Slow Charging:**

- Ensure the power source provides sufficient output (e.g., a wall adapter typically charges faster than a computer USB port).
- Clean the charging contacts on both the cable and the smartwatch.

- **Cable Damage:**

- Inspect the cable for any visible signs of damage, such as frayed wires or bent connectors. If damaged, discontinue use and replace the cable.

SPECIFICATIONS

Brand	Xininyia
Model Compatibility	V69 Smartwatches (AMAZTIM V69, FILIEKEU V69, COLMI V69, Mingtawn V69, Mingdaln V69)
Cable Length	60 cm (2 feet)
Connector Type	USB Type-A to Magnetic Pogo Pin
Material	ABS, Flexible PVC, Pure Copper
Safety Features	Short-circuit protection, Over-voltage protection, Over-current protection (ROHS/CE certified)
Item Weight	0.88 ounces
Package Dimensions	3.54 x 2.91 x 0.91 inches

WARRANTY AND SUPPORT

Specific warranty information for this product is not provided in the available documentation. For support or warranty inquiries, please refer to the retailer or manufacturer's official website where the product was purchased.