

Zeadio DV-LT04-SJX1

Zeadio Portable LED Pocket Light Instruction Manual

Model: DV-LT04-SJX1

1. INTRODUCTION

Thank you for choosing the Zeadio Portable LED Pocket Light. This compact and versatile lighting solution is designed to enhance your photography, videography, and online communication with adjustable illumination. This manual provides essential information for the safe and effective use of your device.

2. PACKAGE CONTENTS

Please verify that all items are present in your package:

- 1 x Zeadio Portable LED Pocket Light
- 1 x Phone Fixed Clip
- 1 x USB Charger Cable (Type-C)

3. PRODUCT FEATURES

The Zeadio Portable LED Pocket Light offers a range of features for optimal lighting control:

- **Adjustable Color Temperature:** Seamlessly switch between 3000K (warm light) and 7000K (cool white light) to match your environment or creative needs.
- **Dimmable Brightness:** Adjust light intensity from 10% to 100% for precise control over illumination.
- **High Color Rendering Index (CRI95):** Ensures natural and accurate color reproduction.
- **Flexible Mounting Options:** Includes a versatile clip with 180-degree rotation and a 1/4-inch thread adapter for compatibility with phones, cameras, tripods, and other accessories.
- **Cold Shoe Adapter:** Features three expansion ports for attaching additional accessories.
- **USB Type-C Charging:** Convenient and fast charging, allowing use while charging.
- **Long Battery Life:** Provides up to 2 hours of operation at maximum brightness or 5 hours at minimum.

brightness.

- **Ultra-Portable Design:** Lightweight and pocket-sized for easy transport and use on the go.



Image: The Zeadio Portable LED Pocket Light demonstrating its versatility when attached to various devices like smartphones, cameras, and laptops.

4. SETUP

4.1 Charging the Device

1. Locate the USB Type-C charging port on the side of the LED light.
2. Connect the included USB Type-C cable to the light and the other end to a compatible USB power source (e.g., wall adapter, computer USB port).
3. The charging indicator light will illuminate during charging and turn off when fully charged.
4. The device can be used while charging.

Charged Via the Included USB-C Charging Cable



Image: The Zeadio LED Pocket Light connected to a USB-C charging cable, illustrating the charging process.

4.2 Attaching the Clip and Mounting

The LED light offers multiple mounting options:

- **Using the Phone Fixed Clip:**

- a. Screw the LED light onto the 1/4-inch screw on the phone clip.
- b. Attach the clip to your smartphone, tablet, or laptop screen. The clip allows for 180-degree rotation for optimal positioning.

- **Using the Cold Shoe Adapter:**

- a. Screw the cold shoe adapter onto the 1/4-inch thread on the bottom of the LED light.
- b. Slide the cold shoe adapter into the hot shoe mount of your camera or a compatible cage/rig.
- c. The cold shoe adapter also features three expansion ports for attaching additional accessories.

- **Direct Tripod Mounting:**

- a. The LED light has a standard 1/4-inch screw hole on its base.

b. Mount the light directly onto any tripod or light stand with a 1/4-inch screw.

Use in Multiple Scenes



quick release clip



cold shoe adapter



1/4" threaded hole



Image: Illustration of the quick release clip, cold shoe adapter, and 1/4-inch threaded hole, highlighting the multiple ways to mount the light.

Flexible Angles, Wide Compatibility

this selfie light is compatible with smartphones, cameras, tablets, laptops, etc.



Image: The LED light mounted on various devices, showcasing its flexible angles and broad compatibility.

5. OPERATING INSTRUCTIONS

The Zeadio LED Pocket Light features intuitive controls for easy adjustment.

5.1 Power On/Off

- Press and hold the power button (usually marked with a power symbol) for a few seconds to turn the light on or off.

5.2 Adjusting Brightness

- Once powered on, use the '+' and '-' buttons to increase or decrease the brightness level. The brightness is adjustable from 10% to 100%.

5.3 Adjusting Color Temperature

- Press the 'M' button (Mode button) to cycle through different color temperature presets or to enter continuous adjustment mode.

- Use the '+' and '-' buttons to fine-tune the color temperature between 3000K (warm) and 7000K (cool).

3 LIGHTING MODES

you can choose different colour temperature to create different photo atmospheres as you want.

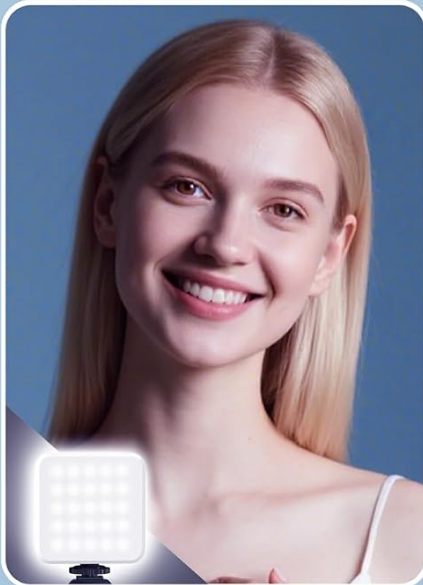


Image: The LED light demonstrating three distinct lighting modes: cool, natural, and warm, suitable for various atmospheres.

Three Lighting Modes and Brightness Adjustment



7000K

color temperature adjustment from 3000K-7000K

3000K

10%

infinitely adjustable brightness from 10%-100%

100%

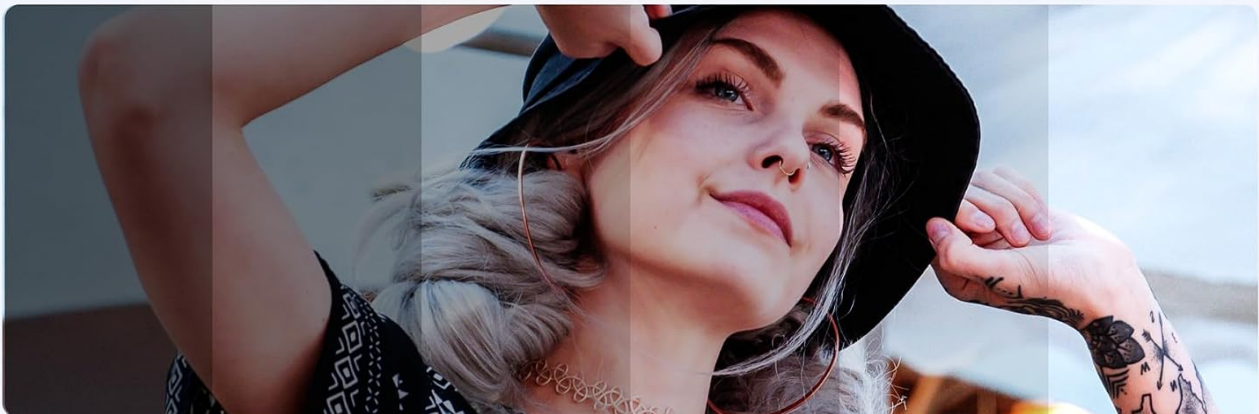


Image: Visual representation of the light's adjustable color temperature range (3000K-7000K) and brightness levels (10%-100%).

6. MAINTENANCE

6.1 Cleaning

- Ensure the device is powered off and disconnected from any power source before cleaning.
- Use a soft, dry cloth to wipe the surface of the LED light.
- Do not use harsh chemicals, abrasive cleaners, or solvents, as these may damage the product.

6.2 Storage

- Store the LED light in a cool, dry place away from direct sunlight and extreme temperatures.
- If storing for an extended period, ensure the battery is partially charged (around 50%) to prolong its lifespan. Recharge every 3-6 months.

6.3 Battery Care

- Avoid fully discharging the battery frequently.

- Use only the provided USB Type-C cable or a certified equivalent for charging.
- Do not expose the battery to high temperatures or puncture it.

7. TROUBLESHOOTING

If you encounter issues with your Zeadio Portable LED Pocket Light, please refer to the following common solutions:

Problem	Possible Cause	Solution
Light does not turn on.	Battery is depleted.	Charge the device using the provided USB Type-C cable.
Light does not turn on.	Power button not pressed correctly.	Press and hold the power button for a few seconds until the light illuminates.
Light is not charging.	Cable or power source issue.	Ensure the USB Type-C cable is securely connected. Try a different USB port or power adapter.
Brightness or color temperature cannot be adjusted.	Incorrect button usage.	Refer to Section 5.2 and 5.3 for correct button functions. Ensure the light is powered on.

8. SPECIFICATIONS

Feature	Detail
Brand	Zeadio
Model Number	DV-LT04-SJX1
Color Temperature	3000K - 7000K (Adjustable)
Brightness Range	10% - 100% (Dimmable)
LED Quantity	100 LEDs (31 Warm + 31 Cold + 38 Natural)
CRI	95
Beam Angle	120°
Max Brightness	800 Lumens
Battery Life (Max Brightness)	Up to 2 hours
Battery Life (Min Brightness)	Up to 5 hours
Charging Port	USB Type-C
Item Weight	5.6 ounces
Package Dimensions	2.76 x 2.76 x 1.18 inches
Batteries	1 x 12V battery (included)
Connectivity Technology	USB

Feature	Detail
Hardware Interface	USB Type C

9. WARRANTY AND SUPPORT

For warranty information or technical support, please refer to the contact details provided with your purchase or visit the official Zeadio website. Keep your proof of purchase for any warranty claims.

