

TESSAN 6534b2fd-de39-42d8-a8f7-0c4aa1e435a5

TESSAN Universal Travel Adapter and Voltage Converter

Instruction Manual

1. PRODUCT OVERVIEW

The TESSAN Universal Travel Adapter and Voltage Converter is designed to provide power solutions for your electronic devices while traveling internationally. This versatile product combines a universal travel adapter for dual-voltage devices and a voltage converter for high-power 220V appliances, ensuring compatibility in over 200 countries.

It features multiple AC outlets and USB ports, including a USB-C port, allowing you to charge several devices simultaneously.



Image 1.1: The TESSAN Universal Travel Adapter and Voltage Converter, showcasing the main unit with multiple outlets and USB ports, alongside various interchangeable international plug adapters.

2. SETUP AND COMPATIBILITY

Before connecting your devices, it is crucial to understand the different components and their intended use to ensure safe operation.

2.1 Understanding Plug Types

The product includes various international plug adapters to fit outlets in different regions:

- **Type C:** Most of Europe (Italy, Spain, France, Germany)
- **Type G:** UK, Ireland, Scotland, British
- **Type I:** Argentina, Australia, Fiji, China

- **Type A:** Japan, USA, Mexico
- **Type L:** Italy
- **Type D:** India, Bangladesh, Maldives
- **Type M:** South Africa

The main unit also features a universal AC outlet compatible with various plug types (Type B, C, G, A, E/F, I, L, J, N, D).

Universal Travel Adapter

Compatible **200+** countries.
World Trip/ Bussiness Trip/ Holiday/ Studies



Type E/F for DE





Type C for EU





Type G for UK





Type I for AU





Type L for IT





Type D for IN





Type M for ZA



Image 2.1: Visual guide to common international plug types (Type C, G, I, L, D, M) and their associated regions, illustrating the adapter's broad compatibility.

Universal AC Outlet

Include additional **Type L, J, N, D** plugs

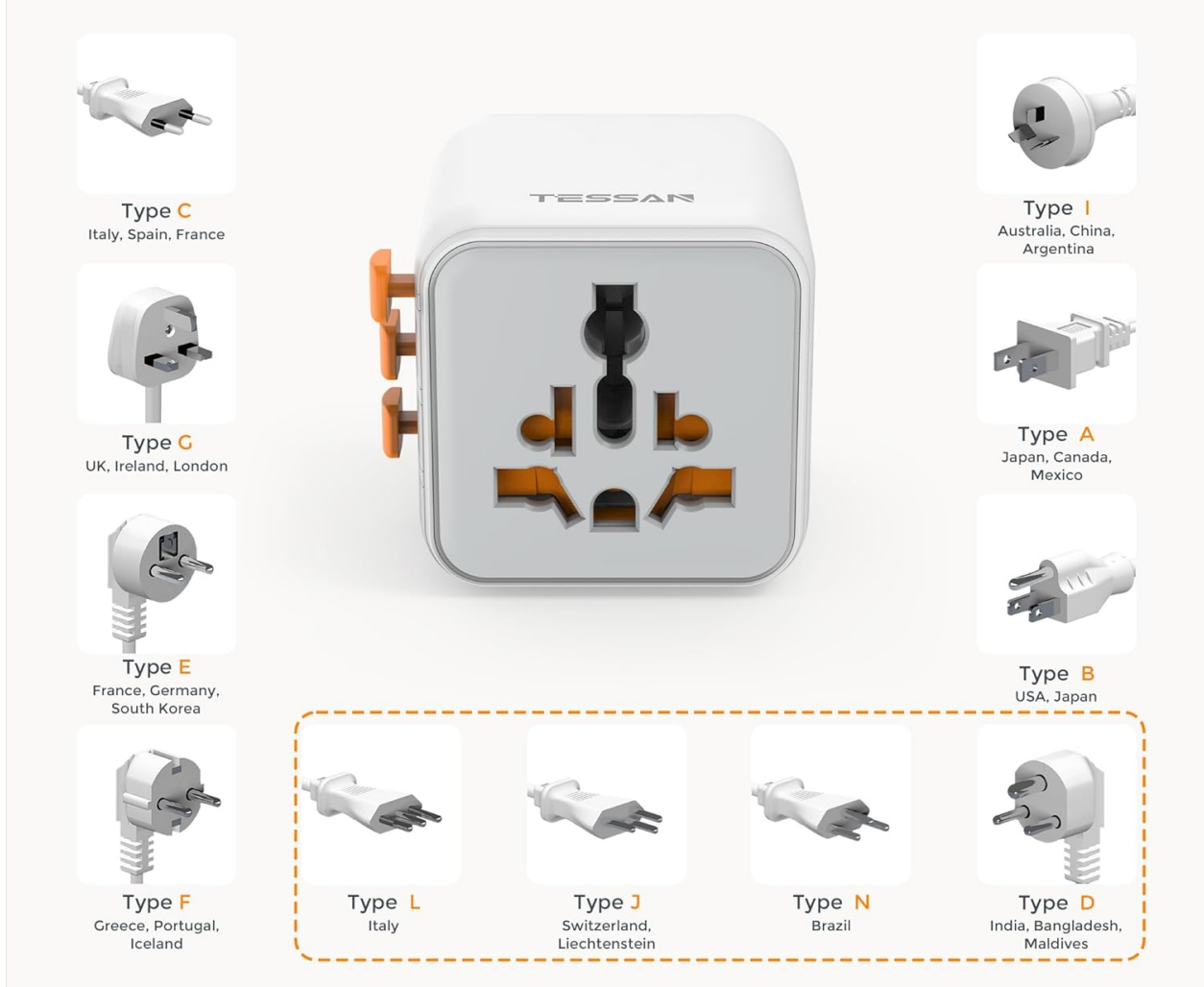


Image 2.2: Detailed illustration of the universal AC outlet on the adapter, demonstrating its compatibility with a wide range of plug types including Type L, J, N, D, E, F, B, A, I, C, and G.

2.2 Initial Connection

1. Identify the correct plug adapter for the country you are in.
2. Attach the appropriate plug adapter to the main unit of the TESSAN converter or the smaller travel adapter.
3. Plug the unit into the wall outlet.

3. OPERATING INSTRUCTIONS

The TESSAN product functions in two primary modes: as a universal travel adapter for dual-voltage devices and as a voltage converter for high-power 220V appliances.

3.1 Adapter Mode (200W Max)

This mode is suitable for dual-voltage electronic devices (100V-240V, 50/60Hz) that do not require voltage

conversion. These typically include:

- Laptops
- Smartphones
- Tablets
- Cameras
- Headphones
- Game Consoles

Use the AC outlets labeled for 200W or the USB ports for these devices. The smaller universal travel adapter (Product 1) also operates in this mode, providing a standard US 2-prong outlet and a versatile outlet for charging two devices simultaneously without blocking.



Image 3.1: The compact 2-in-1 universal travel adapter plugged into a wall outlet, demonstrating its ability to charge two devices simultaneously, such as a smartphone and a camera.

3.2 Converter Mode (2000W Max)

This mode is specifically for converting 220-240V (50/60Hz) foreign voltage down to 110V (60Hz) US voltage. It is designed for high-power heating appliances with simple mechanical motors, such as:

- Kettles
- Steam Irons
- Coffee Machines
- Electric Irons

Use the AC outlets labeled for 2000W for these appliances. Ensure your appliance's wattage does not exceed 2000W.



Image 3.2: A visual representation of the 220V to 110V voltage conversion process, showing the TESSAN converter receiving 100-240V AC input and providing 110V AC output to a connected appliance like a kettle.

3.3 Simultaneous Charging (7-in-1)

The main converter unit is equipped with 3 AC outlets and 4 USB charging ports (3 USB-A, 1 USB-C). This allows for charging up to 7 devices simultaneously.

- USB-A ports: Up to 2.4A output per port.
- USB-C port: Up to 3A output.
- Total USB output: 3.4A/17W max.

7 IN 1 Power Converter

Charge 7 devices simultaneously



Image 3.3: The TESSAN 7-in-1 power converter in use, demonstrating its capability to charge multiple devices simultaneously, including laptops, tablets, and smartphones, via its AC outlets and USB ports.

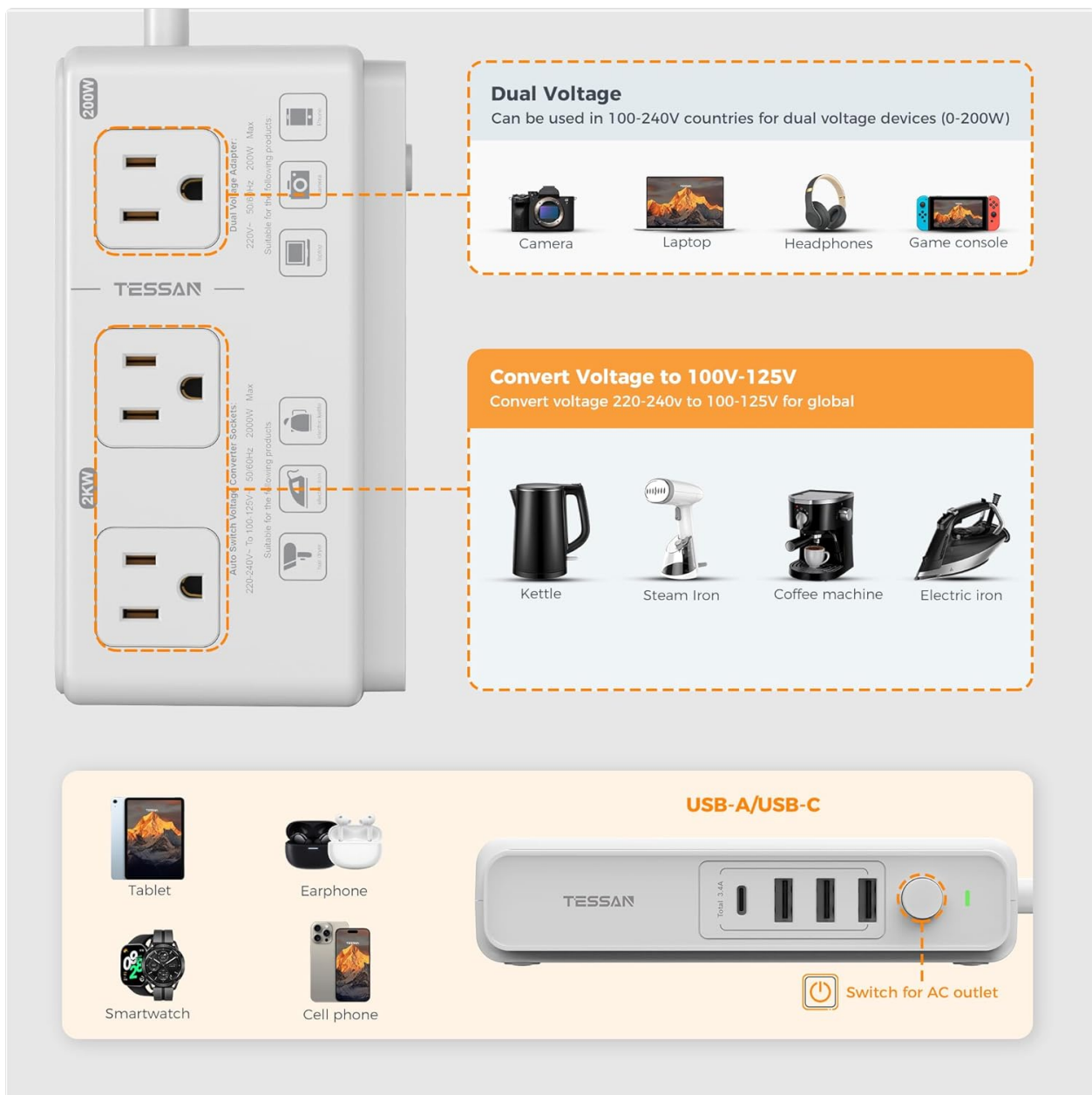


Image 3.4: A detailed diagram of the TESSAN converter's outlets, clearly distinguishing between the 200W dual voltage outlets for devices like cameras and laptops, and the 2000W voltage conversion outlets for high-power appliances such as kettles and irons, along with the USB charging section.

4. MAINTENANCE

To ensure the longevity and optimal performance of your TESSAN Universal Travel Adapter and Voltage Converter, follow these maintenance guidelines:

- **Cleaning:** Disconnect the device from the power outlet before cleaning. Use a soft, dry cloth to wipe the exterior. Do not use liquid cleaners or abrasive materials.
- **Storage:** When not in use, store the adapter and its components in a cool, dry place, away from direct sunlight and moisture.
- **Handling:** Avoid dropping the device or subjecting it to strong impacts. Do not attempt to disassemble or modify the unit.

5. TROUBLESHOOTING

If you encounter issues with your TESSAN Universal Travel Adapter and Voltage Converter, please review the following common problems and solutions:

- **No Power Output:**

- Ensure the adapter is securely plugged into the wall outlet.
- Verify that the wall outlet is functional by testing it with another device.
- Check if the power switch on the unit (if applicable) is turned on.

- **Device Not Charging/Working:**

- **Incorrect Mode:** Ensure you are using the correct AC outlet for your device. Dual-voltage devices (100V-240V) should use the 200W adapter outlets, while 220-240V heating appliances requiring conversion to 110V should use the 2000W converter outlets.
- **Wattage Limit:** Do not exceed the maximum wattage for each outlet (200W for adapter, 2000W for converter).
- **Low Wattage Devices:** Note that the 2000W AC sockets may not work for very low wattage electronic devices (0-5W) such as electric shavers or electric toothbrushes.
- **Voltage Mismatch:** The dual adapter socket (Product 1) does not convert voltage. Do not insert 100V-125V devices into the adapter socket if the input voltage is 220-240V, as this can damage the device.
- **Overvoltage Protection:** Electronic devices with built-in overvoltage protection may not be compatible with the converter. Always check the safety data sheet or data plate on your device.
- **Cable/Device Fault:** Test your device and charging cable with another power source to rule out issues with the device or cable itself.

6. SPECIFICATIONS

Feature	Specification
Brand	TESSAN
Model Number	6534b2fd-de39-42d8-a8f7-0c4aa1e435a5
Input Voltage	220 Volts (for converter function)
Output Voltage	110 Volts (from converter function)
Plug Format	Type A (US standard), with included international adapters (Type C, G, I, L, D, M)
Total Power Outlets	7 (3 AC Outlets + 4 USB Ports)
USB-A Output	Up to 2.4A per port
USB-C Output	Up to 3A

Feature	Specification
Total USB Output	3.4A / 17W Max
Converter Area Max Wattage	2000W
Adapter Area Max Wattage	200W

7. WARRANTY AND SUPPORT

For information regarding returns or warranty, please refer to the retailer's return policy. This product typically includes a 30-day return policy from the date of purchase.

For further assistance, product inquiries, or technical support, please visit the official TESSAN store on Amazon:

Visit TESSAN
Store