

Desview R7051

Desview R705 Camera Field Monitor User Manual

Model: R7051

[Diagram](#) [Setup](#) [Introduction](#) [Package Contents](#) [Product](#)
[Operation](#) [Maintenance](#) [Troubleshooting](#) [Specifications](#) [Warranty & Support](#)

1. INTRODUCTION

The Desview R705 is a 7-inch camera field monitor designed for professional videography and photography. It features a Full HD 1920x1200 IPS touch screen, 4K HDMI input/output, and a suite of advanced monitoring tools including 3D LUT, Waveform, Histogram, and Peaking Focus Assist. This manual provides instructions for setting up, operating, and maintaining your R705 monitor to ensure optimal performance.

2. PACKAGE CONTENTS

Please check the package contents upon unboxing to ensure all items are present:

- Desview R705 Monitor
- Micro HDMI Cable
- Mini HDMI Cable
- D-Tap Cable
- Storage Bag
- User Manual (this document)
- Cold Shoe Mount
- U Disk
- Microfiber Cloth

package included



Monitor



Micro HDMI Cable



Mini HDMI Cable



D-Tap Cable



Storage Bag



User Manual



Cold Shoe



U Disk



Microfiber Cloth

Image: The package includes the Desview R705 monitor, a Micro HDMI Cable, a Mini HDMI Cable, a D-Tap Cable, a Storage Bag, this User Manual, a Cold Shoe mount, a U Disk, and a Microfiber Cloth.

3. PRODUCT DIAGRAM & CONTROLS

Familiarize yourself with the physical layout and control elements of your Desview R705 monitor.



Image: This diagram illustrates the physical dimensions of the Desview R705 monitor (178mm x 117mm x 23mm, weighing 350g/0.8LB). It also details the location of the control buttons (Indicator Light, F1 Shortcut, F2 Shortcut, Power On/Touch Lock, Exit) on the top, and the various ports on the side: USB, 1/4 inch mounting screw hole, 3.5mm Headphone Jack, HDMI IN, HDMI OUT, and DC IN.

3.1. Top Panel Controls

- **Indicator Light:** Shows power and operational status.
- **F1 Shortcut Button:** Customizable function button.
- **F2 Shortcut Button:** Customizable function button.
- **Power On/Touch Lock Button:** Press and hold to power on/off; short press to lock/unlock touch screen.
- **Exit Button:** Used to exit menus or return to previous screens.

3.2. Side Panel Ports

- **USB Port:** For firmware updates and importing 3D LUTs.
- **1/4" Mounting Thread:** For attaching to camera rigs or stands.
- **3.5mm Headphone Jack:** For real-time audio monitoring.
- **HDMI IN:** Connects to your camera's HDMI output.
- **HDMI OUT:** Outputs the video signal to another display.
- **DC IN:** For external power supply (12V DC adapter).

4. SETUP

4.1. Powering the Monitor

The Desview R705 offers flexible power solutions:

- **NP-F Series Battery:** Insert a compatible NP-F series battery (NP-F550, NP-F750, NP-F970) into the battery slot on the back of the monitor.
- **DC Adapter:** Connect a 12V DC power adapter (not included) to the DC IN port.
- **V-Lock Battery:** Use the provided D-Tap cable to connect to a V-lock battery for extended power.

Important: Always remove the battery after use to prevent the monitor from draining the battery.



Image: The monitor can be powered by standard NP-F series batteries (NP-F550, NP-F750, NP-F970) or via a DC 12V adapter (not included). A D-Tap cable is also shown for connecting to V-lock batteries. Remember to remove the battery after use to prevent drainage.

4.2. Connecting to a Camera (HDMI)

To connect your camera to the monitor:

1. Ensure both your camera and the monitor are powered off.
2. Use the appropriate HDMI cable (Micro HDMI or Mini HDMI, included) to connect your camera's HDMI output to the **HDMI IN** port on the monitor.
3. If desired, connect another display to the **HDMI OUT** port using an HDMI cable.
4. Power on your camera, then power on the Desview R705 monitor.

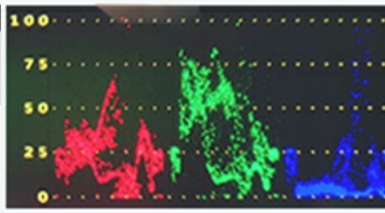
The monitor supports 4K HDMI signals at resolutions including 1920*1080P@23.98,24,25,29.97,30,50,59.94,60Hz; 3840*2160P@24,25,30Hz; and 4096*2160P@24Hz.

Professional Auxiliary Function

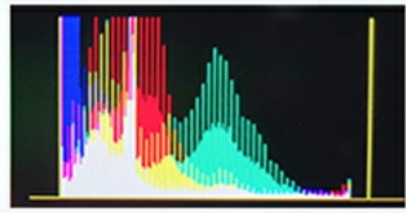
Making photography easier and more professional



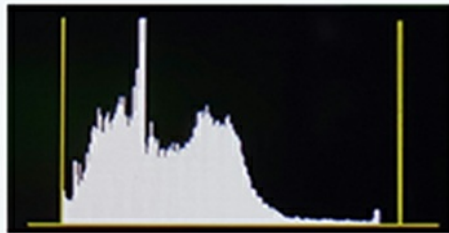
False Color



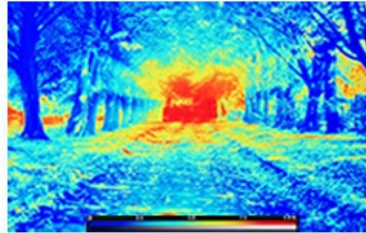
Waveform(RGB Waveform,
Luminance Waveform)



RGB Histogram



Brightness Histogram



Speturm Mode



Arri Mode

Image: This image demonstrates the HDMI IN and HDMI OUT ports on the Desview R705 monitor. It supports 4K HDMI signals at resolutions including 1920*1080P@23.98,24,25,29.97,30,50,59.94,60Hz; 3840*2160P@24,25,30Hz; and 4096*2160P@24Hz.

4.3. Mounting

To mount your monitor:

1. Attach the cold shoe mount (included) to your camera rig or camera's hot shoe.
2. Secure the monitor to the cold shoe mount using the 1/4" screw thread located on the monitor's side.

5. OPERATION

5.1. Basic Power On/Off

To power on or off the monitor, press and hold the **Power On/Touch Lock** button on the top panel for a few seconds.

5.2. Touch Screen Interface

The Desview R705 features a full touch screen for intuitive control and navigation through its functions.

- **Pinch to Zoom:** Use two fingers to pinch in or out on the screen to magnify or reduce the image, allowing for detailed inspection of focus and composition.
- **Adjusting Backlight:** Swipe vertically on the left side of the screen to adjust the backlight intensity.
- **Adjusting Volume:** Swipe vertically on the right side of the screen to adjust the audio volume (this function is typically active when in 1/2 split screen mode or when audio monitoring is active).
- **Touch Lock:** A short press of the **Power On/Touch Lock** button will lock or unlock the touch screen to prevent accidental input during shooting.

Image: The Desview R705 features a full touch screen. This image illustrates common touch gestures: pinch to zoom for viewing details, swiping on the left side to adjust backlight, and swiping on the right side to adjust volume (in 1/2 split screen

mode).

5.3. Advanced Monitoring Functions

The monitor offers a range of professional tools to assist with exposure, focus, and color accuracy. Access these functions via the main menu on the touch screen.

- **3D-LUT:** Import custom Look Up Table (LUT) files via the USB port using a U Disk to apply real-time color grading and preview your final look.
- **Waveform:** Displays luminance and chrominance levels, helping you achieve correct exposure and color balance.
- **RGB Histogram:** Shows the distribution of red, green, and blue color channels, indicating color clipping and overall color balance.
- **False Color:** Assists in setting exposure by displaying different exposure levels as distinct colors, making it easy to identify overexposed or underexposed areas.
- **Focus Peaking:** Highlights in-focus areas with a colored outline, aiding in precise manual focusing.
- **Vectorscope:** Displays color saturation and hue, useful for ensuring accurate skin tones and color consistency.
- **Zoom:** Magnifies a selected portion of the image for critical focus checks.
- **Anamorphic Mode:** Adjusts the display to correctly de-squeeze footage shot with anamorphic lenses.
- Other functions include Zebra, HDR, Audio Meter, Image Flip, Grid Lines, Pixel to Pixel, and more.



Full Touch Screen & Pinch to Zoom

The monitor adopts full touch screen operation, supports pinch to zoom, easy to view local details.



Backlight



Adjusting the brightness of the screen backlight by on the left side of screen (1/2 split screen)



Adjusting the volume by on the right side of the screen (1/2 split screen)

Image: The 3D-LUT function allows for professional color grading. Users can import LUT files via a U Disk to instantly change the color tone of the image. Examples of different LUT presets are shown.



Image: This image highlights the advanced monitoring tools available on the Desview R705, such as Waveform, RGB Histogram, Brightness Histogram, Central Mark, Peaking Focus, and Vectorscope. A comprehensive list of functions includes False Color, Simple Color, Luminance Waveform, Full Waveform, Peaking Filter, Zebra, HDR, LUT, Audio Meter, Image Flip, Battery Notification, Grid Lines, Pixel to Pixel, H/V delay, Display Ratio, Color Temperature, and Zoom-in.

5.4. Custom Shortcut Buttons (F1, F2)

The F1 and F2 buttons on the top panel can be customized to quickly access frequently used functions, improving your workflow efficiency.

1. Navigate to the monitor's menu and locate the "System Config" or "Custom Shortcuts" section.
2. Select F1 or F2 and choose the desired function to assign, such as Exposure Assist, Focus & Composition, or LUT Config.
3. Once assigned, a short press of the F1 or F2 button will activate the chosen function.



Image: The monitor features customizable F1 and F2 shortcut buttons. Users can assign frequently used functions from the menu, such as Exposure Assist, Focus & Composition, LUT Config, Display Setting, and System Config, for quick access during shooting.

5.5. Audio Monitoring

Connect headphones to the 3.5mm Headphone Jack to monitor audio in real-time. This feature is crucial for ensuring good audio quality in your video productions and identifying any potential audio issues during recording.

6. MAINTENANCE

6.1. Cleaning

- Use the provided microfiber cloth to gently clean the screen and body of the monitor.
- For stubborn smudges, lightly dampen the cloth with water or a screen-safe cleaning solution.
- Avoid using harsh chemicals, abrasive materials, or excessive moisture, as these can damage the

screen or internal components.

6.2. Battery Care

- Always remove the battery when the monitor is not in use for extended periods to prevent over-discharge and prolong battery life.
- Store batteries in a cool, dry place, away from direct sunlight and extreme temperatures.
- Ensure batteries are fully charged before important shoots.



Image: The Desview R705 monitor is built with a durable housing designed to provide protection against damage, featuring anti-vibration and sturdy construction for reliable field use.

7. TROUBLESHOOTING

If you encounter issues with your Desview R705 monitor, please refer to the following common solutions:

- **No Power:** Ensure the battery is charged and correctly inserted, or the DC adapter is properly connected. Check that the power button is pressed and held sufficiently to turn on the device.
- **No Signal:** Verify that the HDMI cable is securely connected to both the camera's output and the monitor's HDMI IN port. Check your camera's HDMI output settings to ensure it is enabled and configured correctly.
- **Image Issues (e.g., distorted, incorrect colors):** Check the monitor's display settings and ensure the correct 3D-LUT is applied or disabled if not needed. Verify camera output settings for resolution and frame rate compatibility.
- **Touch Screen Unresponsive:** Ensure the touch lock function is not enabled (short press the Power On/Touch Lock button to toggle). Try restarting the monitor.
- **Audio Problems:** Ensure headphones are properly connected to the 3.5mm jack. Check the monitor's volume settings and the camera's audio output.

For further assistance, please refer to the official Desview support resources or contact your authorized dealer.

8. SPECIFICATIONS

Detailed technical specifications for the Desview R705 Camera Field Monitor:

Feature	Detail
Model	R7051
Screen Size	7 Inches
Display Type	IPS Touch Screen
Resolution	1920 x 1200 Pixels
Aspect Ratio	16:10
Brightness	2600 nits
Contrast Ratio	1000:1
Viewing Angles	178°
HDMI Input/Output	Supports up to 4K (3840x2160p@30Hz, 4096x2160p@24Hz)
Audio Output	3.5mm Headphone Jack
Power Input	DC 12V, NP-F Series Battery (NP-F550/750/970)
Product Dimensions	2 x 6 x 4 inches (5.08 x 15.24 x 10.16 cm)
Item Weight	12.8 ounces (362.87 grams)
Manufacturer	Desview

9. WARRANTY AND SUPPORT

For detailed warranty information, technical support, and service inquiries regarding your Desview R705 Camera Field Monitor, please refer to the official Desview website or contact your authorized dealer. It is recommended to keep your purchase receipt as proof of purchase for warranty claims.