

Comfee RCC102WH2EU(E)

COMFEE' RCC102WH2EU(E) 99L Chest Freezer User Manual

Model: RCC102WH2EU(E)

INTRODUCTION

Thank you for choosing the COMFEE' RCC102WH2EU(E) 99L Chest Freezer. This appliance is designed for efficient and flexible food storage, featuring an inverter compressor for energy saving, a convertible freezer/refrigerator mode, and a D+ cooling system for superior performance. Its practical design includes a hovering door and a removable basket, making it convenient for everyday use. This freezer is also garage-ready, capable of operating in ambient temperatures as low as -15°C.

Please read this manual thoroughly before operating your new appliance to ensure safe and optimal performance. Keep this manual for future reference.

1. SETUP AND INSTALLATION

1.1 Unpacking

- Remove all packaging materials, including foam and adhesive tape.
- Inspect the freezer for any damage during transit. If damage is found, do not plug it in and contact customer support.
- Ensure all accessories, such as the removable basket and instruction manual, are present.

1.2 Placement

- Place the freezer on a firm, level surface away from direct sunlight and heat sources (e.g., oven, radiator).
- Allow at least 10 cm (4 inches) of space around the sides and back of the freezer for proper ventilation.
- This freezer is designed to operate in ambient temperatures down to -15°C, making it suitable for garages and sheds.

Conversión Refrigerador/Congelador



Image: The freezer is shown in various environments like a kitchen, garden, and garage, highlighting its suitability for operation in temperatures down to -15°C .



Image: A diagram emphasizing the freezer's winter protection, indicating it can function in temperatures as low as -15°C, ideal for unheated spaces.

1.3 Leveling

- Use the adjustable feet at the bottom of the freezer to level the unit. This ensures proper door sealing and efficient operation.



Image: A visual representation of the freezer's dimensions (850mm H x 446mm D x 547mm W) and key features like 99L capacity, hovering door, LED light, removable basket, and low noise level.

1.4 Electrical Connection

- Plug the freezer into a dedicated, grounded electrical outlet.
- Do not use extension cords or adapter plugs.
- Allow the freezer to stand upright for at least 2-4 hours before plugging it in to allow refrigerants to settle.

2. OPERATING INSTRUCTIONS

2.1 Temperature Control and Mode Selection

The COMFEE' RCC102WH2EU(E) features a versatile temperature control knob, allowing you to switch between freezer and refrigerator modes.

- **Freezer Mode (Freezing):** Set the knob to 'Freezing' for optimal frozen food storage.
- **Refrigerator Mode (Cooling):** Turn the knob to 'Cooling' to use the unit as a refrigerator, ideal for beverages or fresh produce.
- **Off:** Select 'Off' to turn off the appliance.

Excelente rendimiento de congelación

El congelador tiene una gran capacidad de congelación y puede congelar hasta 4.5 kg de alimentos en 24 horas.



Image: A close-up of the temperature control dial, showing options for 'Off', 'Cooling' (refrigerator mode), and 'Freezing' (freezer mode), surrounded by images of various foods.



Image: A diagram showing the versatility of the appliance, converting between freezer and refrigerator functions with a simple dial turn.

2.2 Inverter Compressor

The intelligent inverter compressor dynamically adjusts cooling power based on demand, leading to energy savings and stable temperatures. This also contributes to the appliance's quiet operation.

Protección invernal

El congelador puede usarse en exteriores hasta -15°C .
Ideal para cocina, jardín o garaje.





Image: An illustration of the inverter compressor technology, emphasizing its benefits of ultra-fast freezing and maintaining a constant temperature.



Image: A detailed diagram explaining how the inverter compressor works to provide efficient and consistent cooling.

2.3 D+ Cooling System

The D+ cooling system features D-shaped refrigeration tubes that surround the interior chamber, enhancing cooling performance and efficiency compared to traditional freezers.

Tapa de apertura fija conveniente

La tapa se puede fijar en cierto ángulo para fácil acceso a los alimentos



Image: A visual comparison of the D+ cooling system (NEW) with an older system (OLD), illustrating how the D-shaped tubes improve cooling efficiency.



Image: A diagram illustrating the D+ cooling system, showing the D-shaped refrigeration tubes that wrap around the interior for faster and more energy-efficient cooling.

2.4 Hovering Door and Removable Basket

- The hovering door stays open at various angles, providing convenient access to your stored items without closing unexpectedly.
- The removable basket helps organize smaller items and can be easily taken out when not needed.



Image: The freezer with its lid open at an angle, demonstrating the convenient hovering door feature that allows easy access to items.

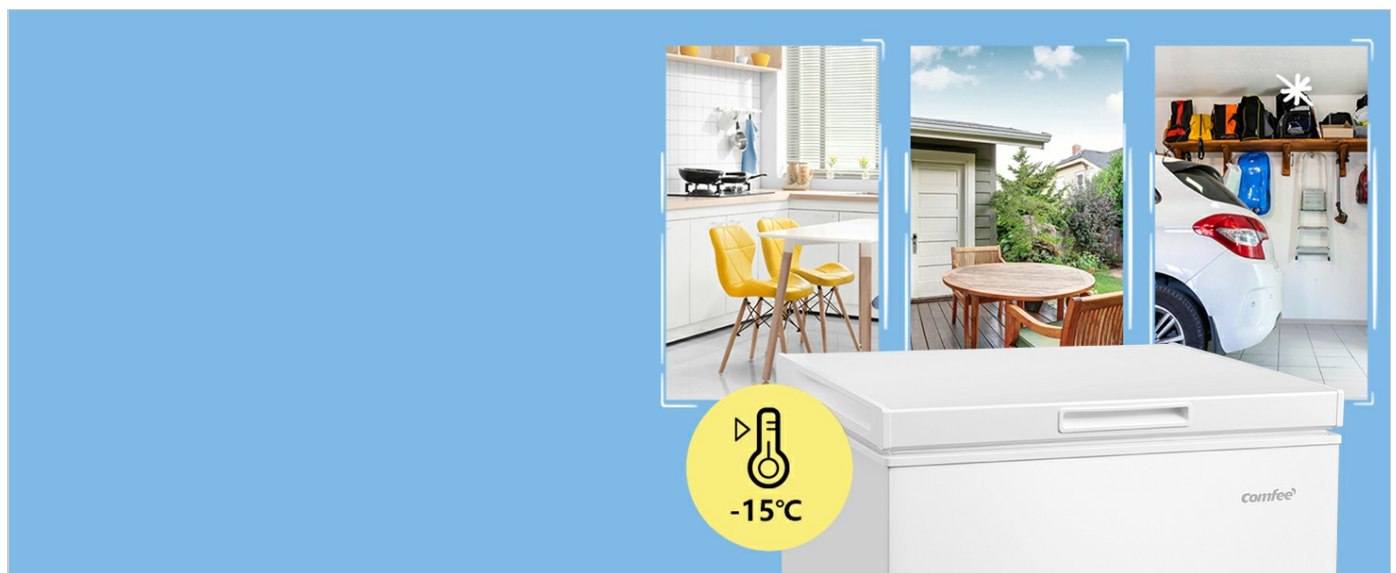






Image: A diagram illustrating the hovering door mechanism, which allows the lid to stay open at various angles for user convenience.

2.5 Integrated LED Lighting

The internal LED light provides clear visibility, illuminating even the deepest corners of the freezer for easy item retrieval, especially in low-light conditions.



-  ¡Precio accesible y calidad galardonada!
-  Recomendado por más de 100 personas influyentes
-  Confiado por clientes en más de 20 países

*El horno microondas Comfee ganó el IF DESIGN AWARD 2019 y el RED DOT DESIGN AWARD 2019.

Image: A view inside the freezer showing the integrated LED light, which provides bright illumination for clear visibility of contents.

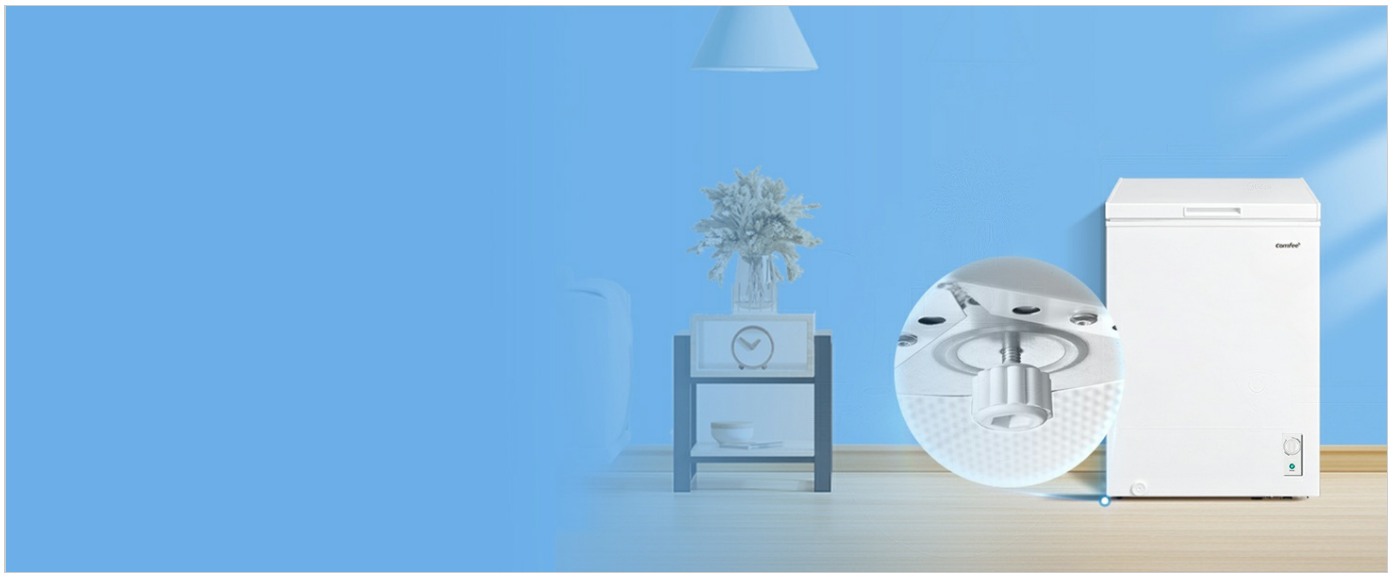


Image: A diagram highlighting the integrated LED lighting, which ensures thorough illumination of the freezer's interior for easy access to items.

2.6 Quiet Operation

With a noise level of only 38 dB, the freezer operates quietly, comparable to a whisper, ensuring minimal disturbance in your home environment.

Sistema de Refrigeración D+

Con tubos en forma de "D" que envuelven el interior, garantizando un enfriamiento más rápido y un menor consumo energético.

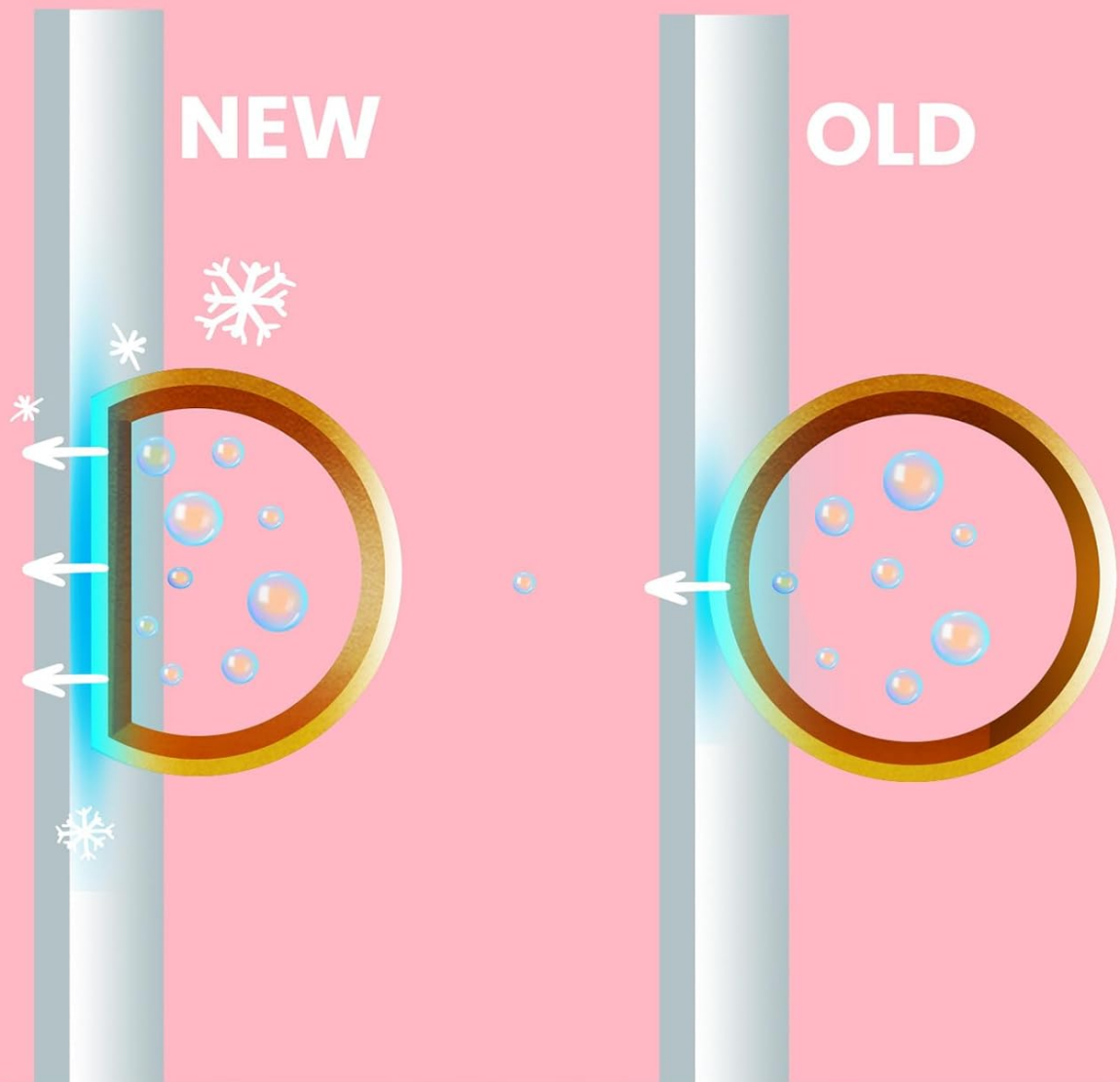


Image: The freezer placed in a living space with a sleeping dog nearby, illustrating its ultra-quiet operation at 38dB.



Image: A diagram emphasizing the freezer's ultra-silent operation, with a noise level of only 38dB, ensuring a peaceful environment.

2.7 Freezing Performance

The freezer has a high freezing capacity, capable of freezing up to 4.5 kg of food within 24 hours.

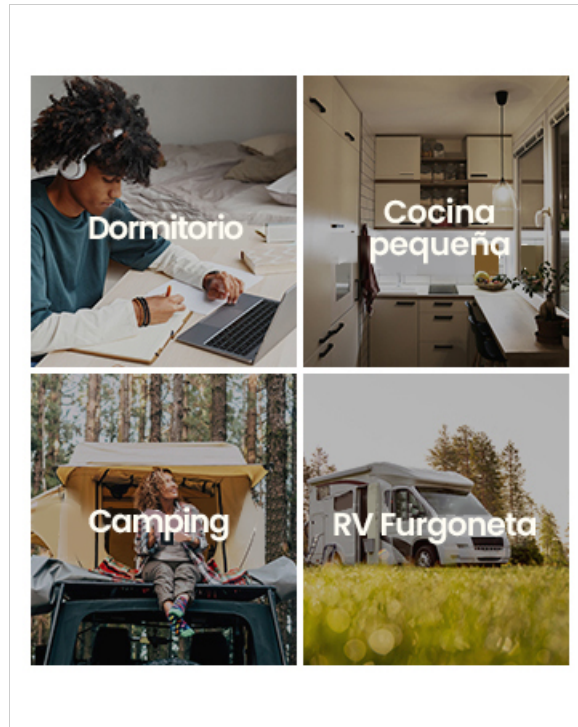


Image: An illustration showing the freezer's excellent freezing performance, capable of freezing up to 4.5 kg of food in 24 hours.

3. MAINTENANCE

3.1 Defrosting

Defrost the freezer when the ice layer reaches a thickness of about 5-10 mm (0.2-0.4 inches). Excessive ice buildup reduces efficiency.

1. Unplug the freezer from the power outlet.
2. Remove all food items and store them in another freezer or cooler.
3. Open the lid and place towels or a shallow pan at the bottom to collect melting ice.
4. Allow the ice to melt naturally. Do not use sharp objects or heating devices to speed up defrosting, as this can damage the appliance.
5. Once defrosted, clean the interior and dry thoroughly before plugging it back in and returning food.

3.2 Cleaning

- **Interior:** Clean the interior with a mild detergent and warm water. Rinse with clean water and dry thoroughly.
- **Exterior:** Wipe the exterior surfaces with a soft cloth and mild detergent.
- **Door Seal:** Regularly clean the door seal to ensure a tight closure and prevent energy loss.
- Always unplug the appliance before cleaning.

4. TROUBLESHOOTING GUIDE

Before contacting customer service, please check the following common issues and solutions:

Problem	Possible Cause	Solution
Freezer does not operate.	No power supply.	Check if the power cord is properly plugged in. Verify the circuit breaker or fuse.
Freezer is not cold enough.	Temperature setting is too high. Door is opened too frequently. Large amount of warm food added.	Adjust the temperature control to a colder setting. Minimize door openings. Allow newly added food to cool before placing in freezer.
Excessive noise.	Freezer is not level. Contact with wall or other objects.	Adjust leveling feet. Ensure adequate clearance around the freezer.
Door does not close properly.	Food packages obstructing the door. Door gasket is dirty or damaged. Freezer is not level.	Rearrange food items. Clean or replace door gasket. Level the freezer.

5. PRODUCT SPECIFICATIONS

Feature	Specification
Model Number	RCC102WH2EU(E)
Brand	Comfee
Capacity	99 Liters
Dimensions (D x W x H)	44.6 x 54.7 x 85 cm
Product Weight	19.7 kg
Energy Efficiency Rating	E
Noise Level	38 dB
Voltage	220 Volts
Wattage	169 kW
Door Material	Stainless Steel
Color	White
Country of Origin	China

6. WARRANTY INFORMATION

Specific warranty details are typically provided with your purchase documentation or within the physical instruction manual included in the product packaging. Please refer to those documents for the most accurate and up-to-date warranty terms and conditions.

Generally, Comfee products come with a manufacturer's warranty covering defects in materials and workmanship for a specified period from the date of purchase. Keep your proof of purchase for any warranty claims.

7. CUSTOMER SUPPORT

If you encounter any issues that cannot be resolved using the troubleshooting guide, or if you require further assistance, please contact Comfee customer support.

- Refer to the contact information provided in your product's physical instruction manual or on the official Comfee website for your region.
- When contacting support, please have your model number (RCC102WH2EU(E)) and purchase date ready.

You can also visit the [Comfee Store on Amazon](#) for more product information and resources.

