

Jocoevol 0818 Fluted dresser

Jocoevol Oak 6-Drawer Fluted Dresser User Manual

Model: 0818 Fluted Dresser

1. INTRODUCTION

Welcome and thank you for choosing the Jocoevol Oak 6-Drawer Fluted Dresser. This manual provides essential information for the safe assembly, proper use, and effective maintenance of your new furniture. Please read these instructions carefully before beginning assembly and retain them for future reference.



Image 1.1: The Jocoevol Oak 6-Drawer Fluted Dresser, showcasing its modern design and oak finish, positioned in a living room environment.

2. SAFETY INFORMATION

Your safety is paramount. Please adhere to the following guidelines to prevent injury or damage to the product.

- **Anti-Tip Kit:** Always install the included anti-tip kit to secure the dresser to a wall. This is crucial to prevent tipping, especially in households with children or pets.
- **Weight Limits:** Do not exceed the recommended weight capacity for each drawer or the dresser top. Overloading can compromise stability and structural integrity.
- **Assembly:** Ensure all fasteners are securely tightened during assembly. Periodically check and re-tighten as needed.
- **Placement:** Place the dresser on a flat, level surface to ensure stability.
- **Child Safety:** Keep small parts and plastic bags away from children during assembly. Do not allow children to climb on or play with the dresser.

Anti-collapse Design

Protect your kids and pets

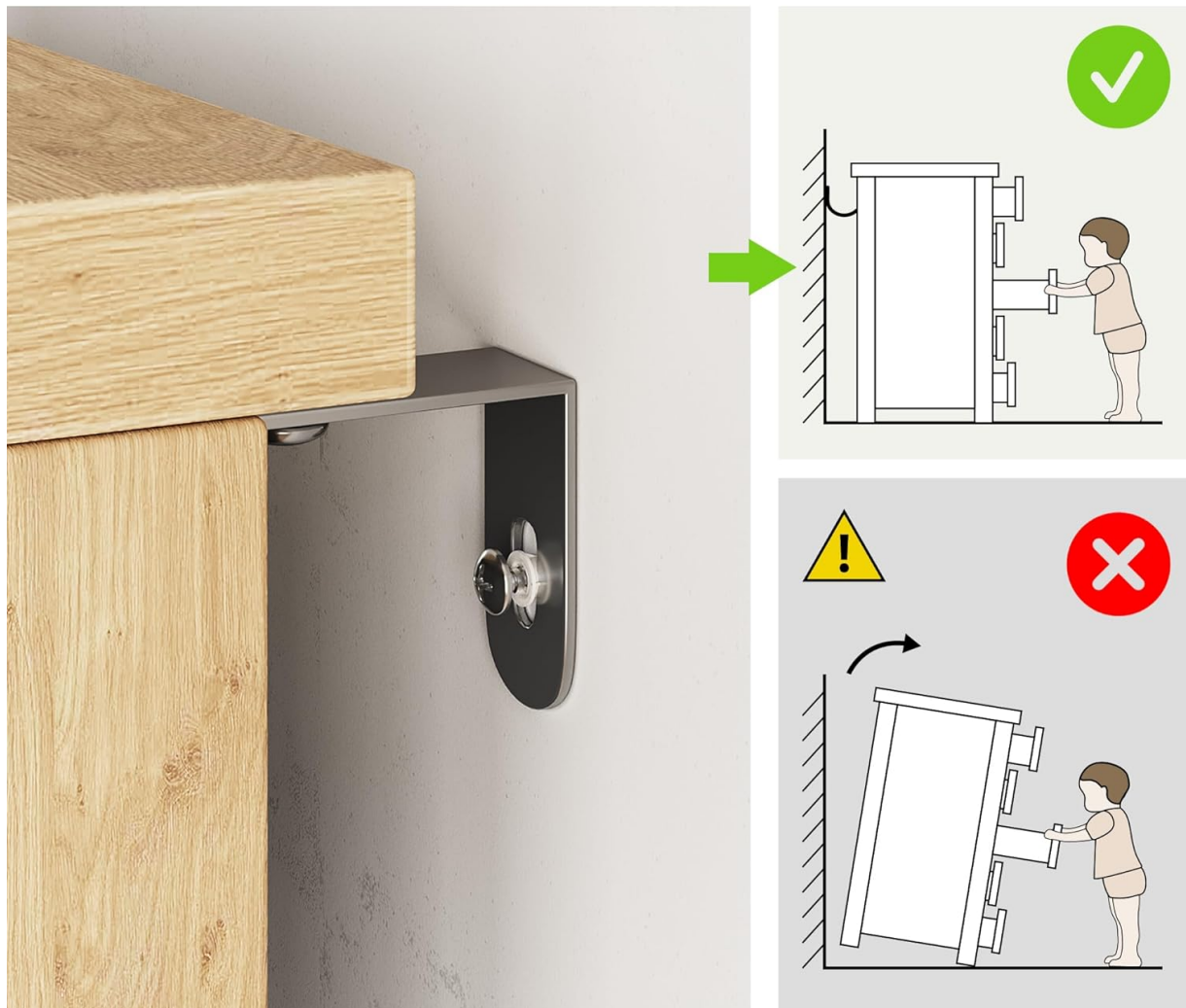


Image 2.1: A visual guide demonstrating the correct installation of the anti-tip kit to prevent the dresser from collapsing or tipping over, emphasizing child safety.

3. PACKAGE CONTENTS

Before beginning assembly, please verify that all components and hardware are present and undamaged. If any parts are missing or damaged, please contact customer support.

- Dresser Panels (Top, Bottom, Sides, Back)
- Drawer Fronts, Sides, and Bottoms (6 sets)
- Drawer Slide Rails (12 pairs)
- Assembly Hardware (screws, dowels, cam locks, etc.)
- Anti-Tip Kit
- Instruction Manual

4. ASSEMBLY INSTRUCTIONS

Assembly is designed to be straightforward. Follow the numbered steps in the included detailed installation instructions. All parts and accessories are labeled for easy identification. It is recommended to assemble the dresser with two people.

4.1 Tools Required (Not Included)

- Phillips Head Screwdriver
- Hammer (for dowels)

4.2 General Assembly Steps

1. Unpack all components and lay them out on a clean, soft surface to prevent scratches.
2. Identify each part using the labels and the parts list in the separate instruction booklet.
3. Assemble the main frame of the dresser according to the diagrams.
4. Assemble each of the six drawers, ensuring the slide rails are correctly installed.
5. Insert the assembled drawers into the dresser frame.
6. Install the anti-tip kit to a wall stud using appropriate hardware (refer to Section 2 for safety).

Dimensions

Overall: 47.2"W* 15.6"D* 32.3"H

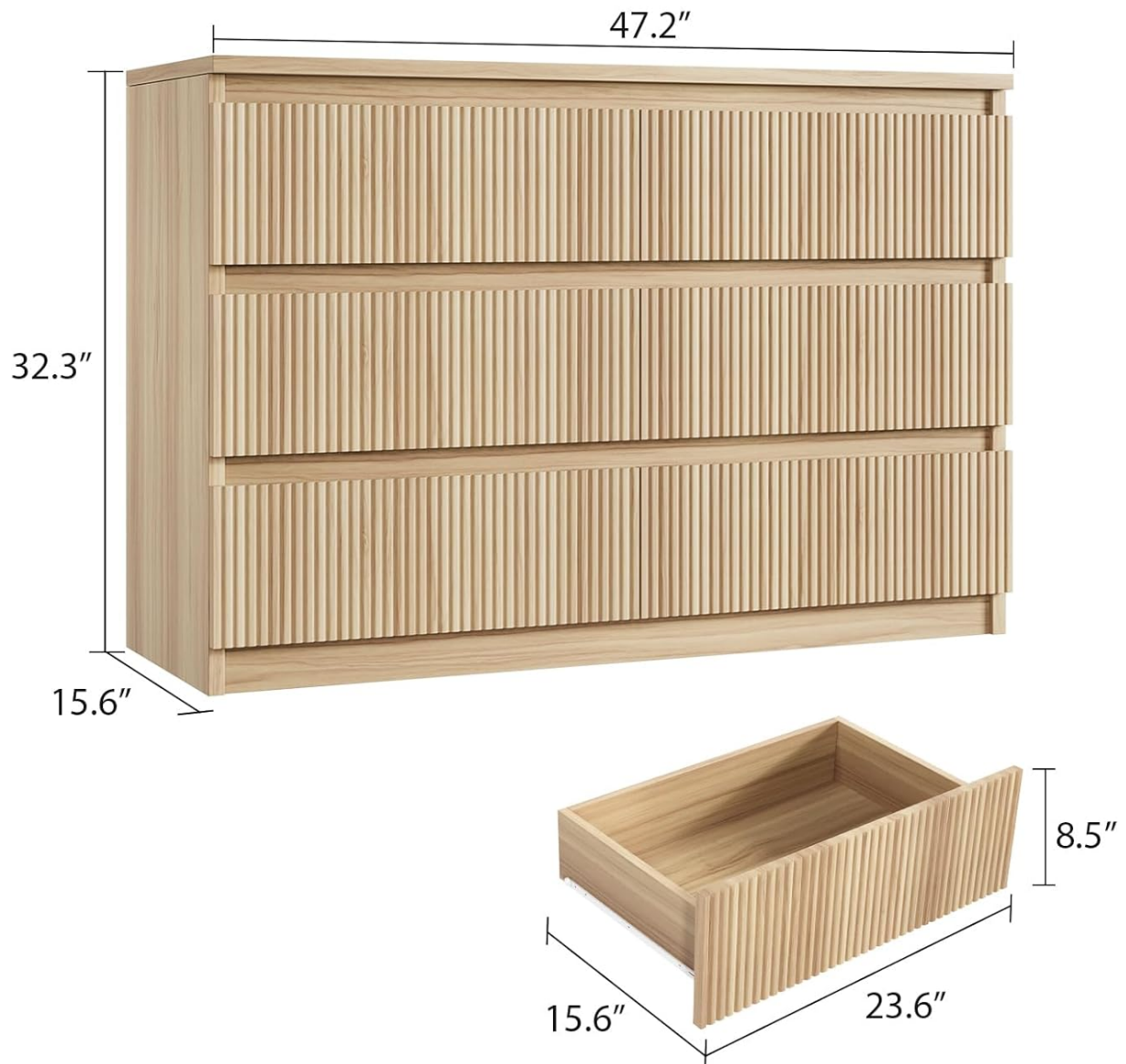


Image 4.1: Detailed dimensions of the dresser (47.2"W x 15.6"D x 32.3"H) and an individual drawer (23.6"W x 15.6"D x 8.5"H), useful for planning placement and storage.

6-DRAWER DRESSER

Meet Your Storage Needs

This dresser can hold:



100-120



60-80



90-120



12-18



60-75



80-100

Image 4.2: An illustrative view of the dresser with drawers open, indicating the approximate storage capacity for different types of items like shirts, pants, socks, and other personal belongings.

5. OPERATING INSTRUCTIONS

The Jocoevol 6-Drawer Fluted Dresser is designed for convenient storage in various rooms.

- **Drawer Operation:** Gently pull and push the drawers using the integrated handleless design. The high-quality metal slide rails ensure smooth and quiet operation.
- **Storage:** Utilize the six spacious drawers to organize clothing, accessories, or other personal items. Distribute weight evenly within drawers to maintain balance and prevent strain on the slides.
- **Top Surface:** The spacious top surface can be used for displaying decorative items, lamps, or photos. Ensure items are stable and do not overhang excessively.



Image 5.1: A close-up of an open drawer, highlighting the smooth metal slide mechanism that ensures effortless operation.

6. MAINTENANCE AND CARE

Proper care will extend the life and maintain the appearance of your dresser.

- **Cleaning:** Wipe surfaces with a soft, damp cloth. Avoid harsh chemicals, abrasive cleaners, or excessive moisture, which can damage the finish.
- **Spills:** Immediately wipe up any spills to prevent staining or water damage.
- **Protection:** Use coasters or mats under hot or wet items placed on the dresser top. Avoid direct sunlight exposure for prolonged periods to prevent fading.
- **Hardware:** Periodically check and tighten all screws and fasteners to ensure structural integrity.



Image 6.1: A detailed view of the dresser's top surface, showcasing the waterproof and wear-resistant wood grain finish.

7. TROUBLESHOOTING

If you encounter any issues with your dresser, refer to the following common solutions:

- **Drawers Stick or Don't Close Smoothly:**
 - Check if the drawer slides are properly aligned and free of obstructions.
 - Ensure the dresser is on a level surface.
 - Verify that the drawer contents are not overloaded or unevenly distributed.

- **Dresser Feels Unstable:**
 - Confirm all assembly hardware is securely tightened.
 - Ensure the anti-tip kit is correctly installed and anchored to a wall stud.
 - Check if the dresser is placed on a flat, even floor.
- **Scratches or Minor Damage:**
 - For minor scratches, a furniture repair marker or wax stick matching the oak finish may be used.

8. PRODUCT SPECIFICATIONS





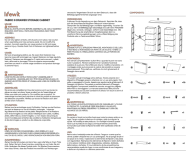
Feature	Detail
Brand	Jocoevol
Model Name	0818 Fluted dresser
Color	Oak
Product Dimensions (Overall)	47.3" L x 15.7" D x 31.6" H
Item Weight	92 Pounds
Room Type	Bedroom, Living Room, Hallway
Assembly Required	Yes
Material	Quality MDF wood, metal slides

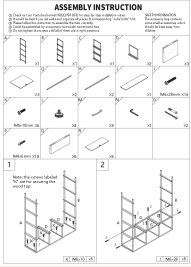
9. CUSTOMER SUPPORT & WARRANTY

Jocoevol is committed to providing excellent service. If you have any questions regarding assembly, missing parts, or product issues, please do not hesitate to contact our customer support team. We aim to reply within 24 hours.

For support, please refer to the contact information provided with your purchase documentation or visit the official Jocoevol store on Amazon: [Jocoevol Store](#).

Warranty information is typically included with your purchase. Please review it for details on coverage and claims.

<p>ASSEMBLY INSTRUCTIONS</p>  <p>Outdoor Armchair Retain this manual for future use. And read carefully.</p>	<p>Jocoevol Outdoor Armchair Assembly Instructions</p> <p>Detailed assembly instructions for the Jocoevol Outdoor Armchair, including parts list, step-by-step guidance, and care tips for WPC furniture.</p>
<p>INSTALLATION INSTRUCTION</p>  <p>1</p>	<p>Jojoka Dresser Installation Guide: Assembly Instructions for 6-Drawer Chest</p> <p>Detailed, step-by-step installation guide for the Jojoka 6-Drawer Dresser. Learn how to assemble your new chest of drawers with clear instructions and part identification.</p>
<p>INSTALLATION INSTRUCTION</p>  <p>Thank you for purchasing our products. Please read and follow the instructions carefully to ensure the safe and proper use of the product. Please do not use the product for any purpose other than intended. ©2024 Joyan Furniture Co., Ltd.</p> <p>1</p>	<p>Jojoka 3-Drawer Dresser Installation Guide</p> <p>Step-by-step instructions for assembling the Jojoka 3-drawer dresser, including board identification, hardware list, and assembly steps.</p>
<p>Installation Instruction</p> 	<p>Installation Instructions for 5-Drawer Chest Dresser</p> <p>A comprehensive guide to assembling and installing the LEVNARY 5 Drawer Chest Dresser, a rattan tall dresser with wood storage and metal handles, suitable for bedrooms, living rooms, hallways, and nurseries.</p>
	<p>Lifewit Fabric 8 Drawer Storage Cabinet Assembly and Usage Guide</p> <p>Comprehensive instructions for assembling and using the Lifewit 8 Drawer Fabric Storage Cabinet. Includes safety warnings, assembly steps, and usage tips for optimal product care and longevity.</p>



[YILQQPER 9-Drawer Dresser Assembly Instructions](#)

Step-by-step guide for assembling the YILQQPER 9-Drawer Dresser, including parts list and detailed instructions for building the chest of drawers with steel frame and wood top.