



[Manuals.plus](#) /

> [BOIFUN](#) /

> BOIFUN Motorcycle Drive Recorder Metal Mounting Holder User Manual

BOIFUN MT01, MT02, MT04, MT05

BOIFUN Motorcycle Drive Recorder Metal Mounting Holder User Manual

Brand: BOIFUN | Compatible Models: MT01, MT02, MT04, MT05

1. OVERVIEW

This manual provides detailed instructions for installing the BOIFUN Metal Mounting Holder for motorcycle drive recorders. This robust holder features a unique anti-theft design and excellent shock resistance, compatible with various motorcycle types. It supports BOIFUN drive recorder models MT01, MT02, MT04, and MT05.

2. PACKAGE CONTENTS

Please ensure all the following components are included in your package:

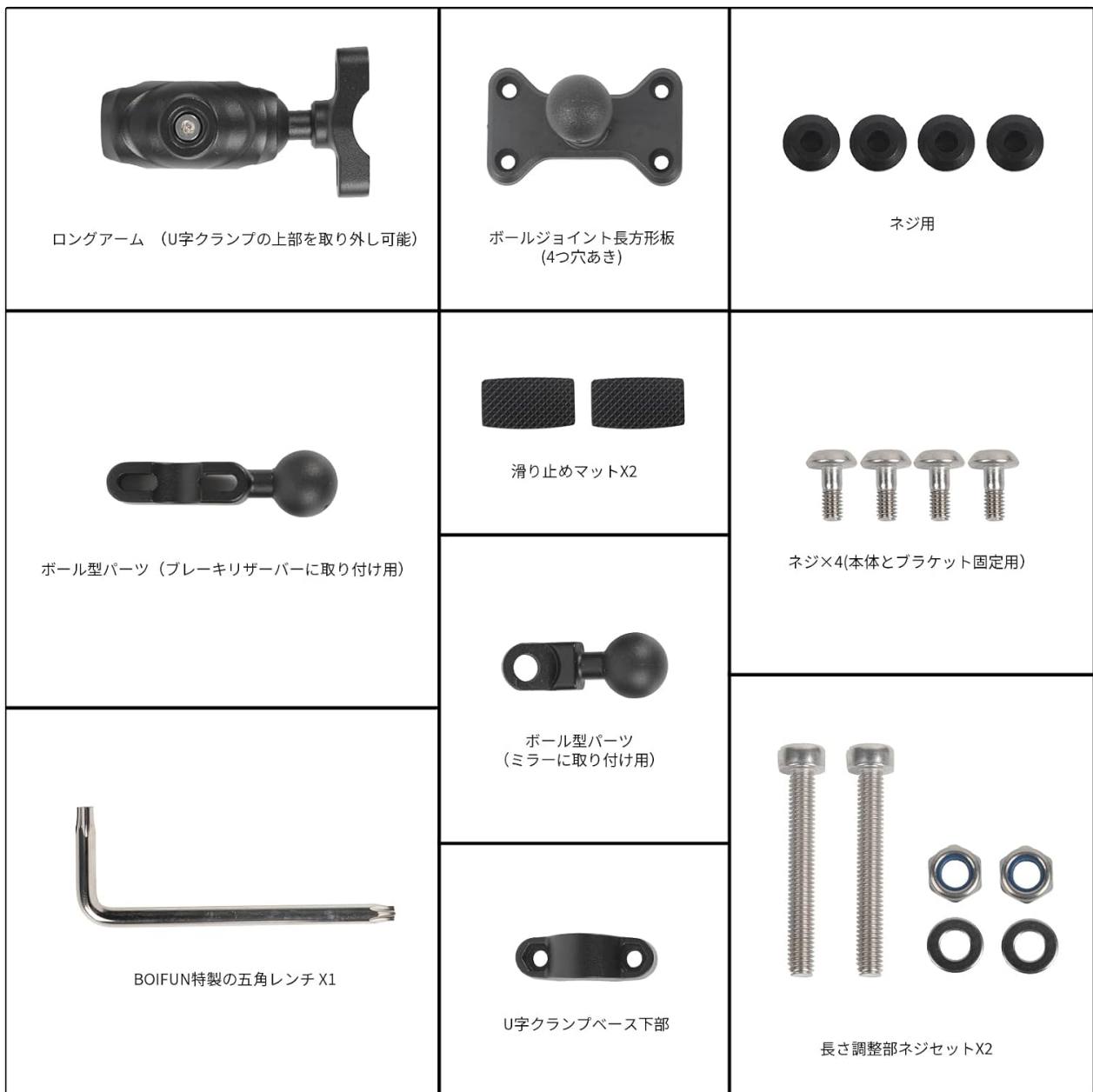


Image: All components included in the BOIFUN Metal Mounting Holder package.

- Long Arm (U-clamp top removable)
- Ball Joint Rectangular Plate (4 holes)
- Screws (for general use)
- Anti-slip Pads x2
- Ball Type Part (for brake reservoir attachment)
- Screws x4 (for main unit and bracket fixation)
- Ball Type Part (for mirror attachment)
- BOIFUN Special Pentagonal Wrench x1
- U-Clamp Base Bottom Part
- Length Adjustment Screw Set x2

3. INSTALLATION INSTRUCTIONS

This mounting holder offers multiple installation methods to suit various motorcycle configurations. Please choose the method most appropriate for your vehicle.

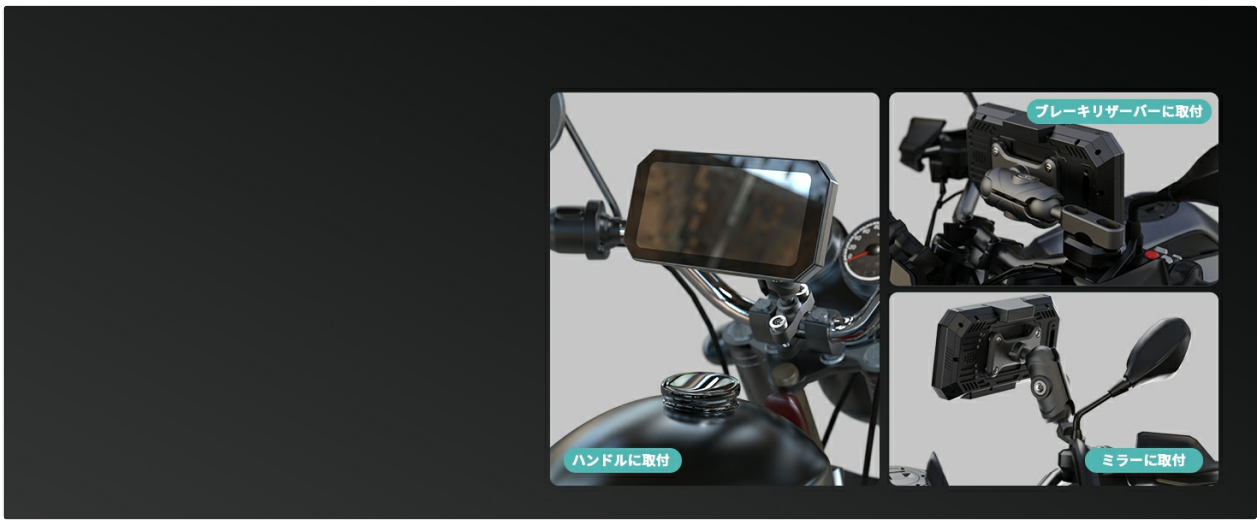


Image: Visual representation of the three primary mounting options for the holder.

Method 1: Handlebar Mount (Handlebar diameter: 20mm-25mm)



Image: Diagram illustrating the steps for handlebar mounting.

1. Attach the anti-slip mats to the top and bottom inner surfaces of the U-clamp.
2. Place flat washers onto the long screws.
3. Thread the nuts onto the long screws, then insert them into the bottom part of the U-clamp.
4. Position the U-clamp assembly on the motorcycle handlebar. Use the special pentagonal wrench to tighten the screws, securing the bracket firmly to the handlebar.
5. Attach the anti-slip pads to the screw holes on the rectangular plate of the ball joint.
6. Loosen the screw located in the center of the long arm using the special pentagonal wrench. Insert the ball part of the main unit into the top of the long arm, then re-tighten the screw in the center of the long arm to secure it.
7. Align the screw holes of the bracket's rectangular plate with the corresponding screw holes on the back of the drive recorder unit and tighten the screws to complete the installation.

Method 2: Mirror Mount (Hole diameter: up to 10mm)

1. Carefully remove the motorcycle mirror using an appropriate spanner or wrench. (Note: The spanner/wrench is not included; separate preparation is required. The exact mirror removal method may vary depending on your motorcycle model.)
2. Combine the ball-type mirror mount part with the motorcycle mirror stem.
3. Attach the assembled drive recorder unit to the mirror mount.
4. After inserting the ball head of the mirror mount into the long arm, adjust the position for optimal visibility.

Securely tighten the center screw of the long arm to finalize the installation.

Method 3: Brake Reservoir Mount

1. Remove the original screw from the brake reservoir tank.
2. The ball-type part for the brake reservoir mount should be tightened using the original screw. (Important Note: The length of the original screw and the ball-type part may not always be compatible. If incompatibility occurs, please consider using an alternative mounting method.)
3. Attach the assembled drive recorder unit to the brake reservoir mount.

4. IMPORTANT NOTES & COMPATIBILITY

Motorcycle types vary widely. Please select an appropriate installation method based on the specific condition and design of your motorcycle. Depending on the vehicle model, certain installation methods may not be suitable. Please acknowledge this in advance.

Compatible BOIFUN Drive Recorder Models:



Image: Compatible BOIFUN drive recorder models.

- MT01
- MT02
- MT04
- MT05

5. SPECIFICATIONS

Brand	BOIFUN
Color	Black
Mounting Type	Handlebar, Mirror, Brake Reservoir
Compatible Vehicle Type	Motorcycle
Key Feature	Shock Resistance, Anti-theft Design
Warranty	2-year warranty

ASIN	B0F4DKYZPP
GTIN	791953949606

6. WARRANTY AND SUPPORT

BOIFUN offers a 2-year warranty for this product. For any questions, unclear points, or in the event of initial product defects, please do not hesitate to contact our dedicated Japanese customer support center.

Official Email: admin@boifun.net

We are committed to 100% quality improvement and promise to provide the best support, including new product shipments for initial defects. Welcome to BOIFUN!

7. OFFICIAL PRODUCT VIDEO

Watch the official installation guide for the BOIFUN Motorcycle Drive Recorder Metal Mounting Holder:

Your browser does not support the video tag.

Video: A detailed guide demonstrating the installation process for the BOIFUN Metal Mounting Holder on various motorcycle parts, including handlebars, mirrors, and brake reservoirs.