

Manuals+

[Q & A](#) | [Deep Search](#) | [Upload](#)

[manuals.plus](#) /

> [KAMEP](#) /

> [KAMEP Wireless Doorbell Camera User Manual](#)

KAMEP Bell J9 Plus

KAMEP Wireless Doorbell Camera User Manual

Model: Bell J9 Plus | Brand: KAMEP

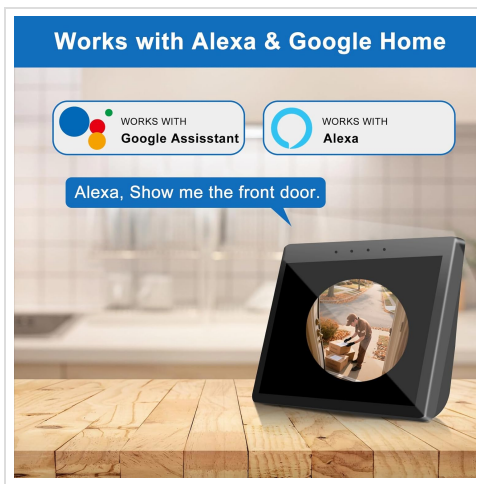
INTRODUCTION

The KAMEP Wireless Doorbell Camera provides advanced home security with its 180° head-to-toe video, 2K HD live view, and two-way talk functionality. Designed for ease of use, it features battery power, smart motion detection with customizable alerts, and no mandatory subscription fees. This manual will guide you through the setup, operation, maintenance, and troubleshooting of your new doorbell camera.



The KAMEP Wireless Doorbell Camera offers comprehensive surveillance for your home entrance, capturing a wide field of view to ensure you miss nothing.

WHAT'S IN THE BOX



This image displays all the components included in your KAMEP Wireless Doorbell Camera package, ensuring you have everything needed for installation and operation.

- 1 x Video Doorbell
- 1 x Wireless Indoor Chime
- 1 x User Guide
- 1 x Charging Cable
- 1 x Screw Kit

SETUP GUIDE

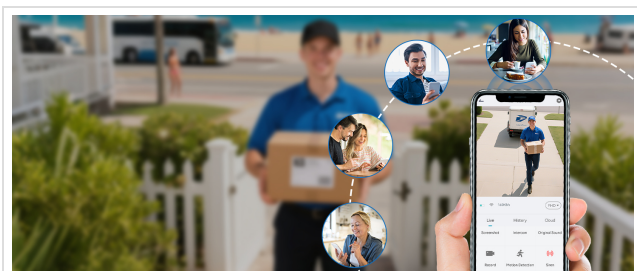
1. Charging the Device



The doorbell camera is powered by a built-in rechargeable battery, offering extended usage between charges. An app notification will alert you when the battery level reaches 20%.

Before first use, fully charge the doorbell camera using the provided charging cable. A full charge can last 1-2 months depending on usage. The companion app will notify you when the battery level is low.

2. Installation



Installation of the doorbell camera is designed to be quick and flexible. You can choose between using adhesive pads for a drill-free setup or the provided steel bracket and screws for a more secure, anti-theft installation.

The doorbell can be installed in approximately 5 minutes. For a rent-friendly option, use the adhesive pads. For enhanced security, utilize the steel bracket and screws to mount it to your door frame. The device is built to withstand various weather conditions, including snow, rain, and extreme temperatures.

3. App and Wi-Fi Connection

To begin, download the companion application to your smartphone. Ensure your Wi-Fi network is 2.4GHz, as 5GHz networks are not supported. Follow the in-app instructions to connect your doorbell camera to your home network. The app allows for customization of settings, viewing live footage, and receiving alerts.

Your browser does not support the video tag.

This video demonstrates the unboxing, installation process, and initial setup of the KAMEP Wireless Doorbell Camera, including connecting it to the mobile application and using its features.

OPERATING INSTRUCTIONS

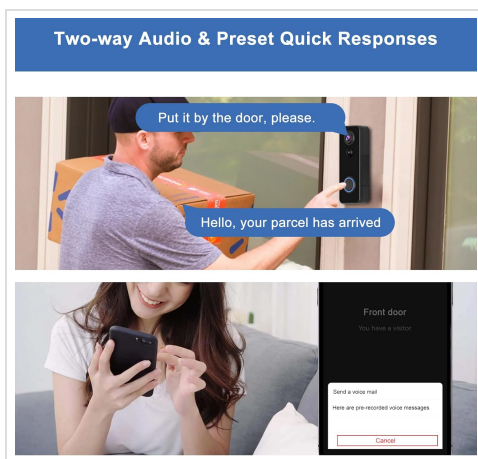
1. Live View and 2K HD Clarity



The KAMEP doorbell camera provides a 180-degree ultra-wide lens, offering a full head-to-toe view of visitors and packages on your doorstep, eliminating blind spots. The 2K HD resolution ensures clear and detailed live viewing.

Access the live feed from your doorbell camera at any time through the companion app. The 180° ultra-wide lens captures a complete head-to-toe view of visitors and packages, ensuring no blind spots. The crisp 2K HD resolution allows you to zoom in and identify details clearly.

2. Two-Way Audio and Quick Responses



Engage in real-time two-way conversations with visitors through the doorbell camera. For convenience, you can also utilize pre-set quick replies or a voice changer feature for added privacy.

Utilize the two-way audio feature to communicate directly with anyone at your door. You can also use the voice changer for added privacy or select from pre-set quick replies for common situations, such as instructing a delivery person to leave a package.

3. Smart Human Detection and Alerts



The doorbell camera features advanced PIR motion detection, specifically designed to identify human movement and minimize false alarms. You can customize detection zones and sensitivity settings within the app to receive relevant alerts.

The advanced PIR motion detection system focuses on human movement, significantly reducing false alarms from pets or environmental factors. Customize detection zones and sensitivity levels through the app to receive alerts only for important activity at your doorstep.

4. Night Vision



The camera provides clear 2K HD video quality during the day and extends its surveillance capabilities into the night with 33ft infrared night vision, ensuring visibility even in complete darkness.

The doorbell camera is equipped with powerful infrared night vision, allowing it to monitor your property effectively up to 33 feet even in pitch-black conditions, providing continuous security day and night.

5. Storage Options



The KAMEP doorbell camera offers flexible storage solutions. You can choose to use a local TF (microSD) card (up to 128GB, not included) for recording, or utilize the free basic cloud storage which provides 6-second clips with a 7-day loop.

You have the flexibility to choose your preferred video storage method. The camera supports a 128GB TF (microSD) memory card for local storage (not included), or you can opt for the free lifetime cloud storage, which provides a basic 6-second/7-day loop recording.

6. Smart Home Integration



The doorbell camera is compatible with Amazon Alexa and Google Assistant, allowing you to integrate it into your smart home ecosystem for convenient voice control and live viewing on compatible smart displays.

The KAMEP doorbell camera seamlessly integrates with Amazon Alexa and Google Assistant. Use voice commands like "Show me the front door" to view the live feed on compatible smart displays.

MAINTENANCE

To maintain optimal performance, ensure the doorbell camera's built-in rechargeable battery is charged regularly. The companion app will provide alerts when the battery level is low (around 20%). A full charge typically lasts 1-2 months depending on usage. Keep the camera lens and sensors clean from dust and debris for clear video quality.

TROUBLESHOOTING

- **Wi-Fi Connectivity:** Ensure your Wi-Fi network is 2.4GHz. The device does not support 5GHz networks. Check your router's signal strength at the doorbell's location.
- **Battery Life:** If the battery drains quickly, reduce motion detection sensitivity or frequency of live view access. Ensure the device is fully charged.
- **False Alerts:** Adjust motion detection sensitivity and customize detection zones within the app to minimize alerts from non-human movements like pets or passing vehicles.
- **Video Quality:** Ensure the camera lens is clean and free from obstructions. Check your Wi-Fi connection for stable bandwidth.

For further assistance, refer to the in-app help section or contact customer support.

SPECIFICATIONS

Feature	Detail
Indoor/Outdoor Usage	Outdoor, Indoor
Compatible Devices	Smartphone
Power Source	Battery Powered
Connectivity Protocol	Wi-Fi
Controller Type	CloudEdge
Mounting Type	Door Mount
Video Capture Resolution	2K HD
Color	Black
Number of Items	1

Feature	Detail
Wireless Communication Technology	Wi-Fi
Effective Video Resolution	1400
Installation Type	Self Adhesive,Screw In
Material	Plastic
Item dimensions L x W x H	5.79 x 2.2 x 1.5 inches
Water Resistance Level	Waterproof
Batteries Required?	No
Video Capture Format	MP4
Unit Count	1.0 Count
Control Method	App
Product Dimensions	5.79 x 2.2 x 1.5 inches
Item Weight	14.8 ounces
ASIN	B0F4DBB8RN
Item model number	Bell J9 Plus
Batteries	1 Nonstandard Battery batteries required. (included)
Date First Available	April 10, 2025
Manufacturer	KAMEP
Country of Origin	China
Recommended Uses For Product	Outdoor Security
Brand	KAMEP
Model Name	Bell J9 Plus
Connectivity Technology	Wireless

Feature	Detail
Special Feature	2K HD Resolution, Night Vision, Motion Sensor, 2 Way Audio, Built In Light, IP66 Waterproof, Local Recording, Cloud / TF Card Storage, Work with Alexa & Assistant Google See more

WARRANTY AND SUPPORT

For warranty information and customer support, please refer to the manufacturer's official website or contact their customer service department. Keep your purchase receipt for warranty claims.