

Vaporesso Vaporesso Vibe Nano pro Kit

Vaporesso Vibe Nano Pro Kit User Manual

Model: Vaporesso Vibe Nano Pro Kit

INTRODUCTION

This user manual provides comprehensive instructions for the safe and effective operation of your Vaporesso Vibe Nano Pro Kit. Please read this manual thoroughly before using the device to ensure optimal performance and longevity.



Figure 1: Vaporesso Vibe Nano Pro Kit - Front and Bottom View. This image displays the sleek design of the Vibe Nano Pro Kit, highlighting its compact form factor and the location of the USB-C charging port and airflow adjustment on the base.

PACKAGE CONTENTS

Upon unboxing, please verify that all items listed below are present and in good condition:

- 1X Vaporesso Vibe Nano Pro Battery
- 1X Vaporesso Vibe Series 0.8Ω Dual Mesh Pod (Pre-installed)
- 1X User Manual & Warranty Card

PRODUCT OVERVIEW AND FEATURES

The Vaporesso Vibe Nano Pro Kit is designed for an enhanced user experience, featuring advanced technology and user-friendly functionalities.



Figure 2: Key Features of Vaporesso Vibe Nano Pro. This illustration highlights the core technologies integrated into the device, including the Dual Mesh coil for improved flavor, the long-lasting 1500mAh battery, the intelligent AXON chip, and the dual ECO/POWER modes for versatile performance.

- **Dual Mesh Tech:** Enhances flavor and pod lifespan.
- **1500mAh Battery:** Provides extended usage with 5V/2A quick charge capability.
- **AXON Chip:** Intelligent and powerful chip for optimized performance.
- **0.96-inch TFT Screen:** Displays essential vaping information clearly.
- **ECO/PWR Modes:** Two distinct modes for different vaping preferences.
- **Ultra-fast 0.01s Auto-draw Activation:** Instant response for immediate use.
- **Ergonomic Mouthpiece:** Designed for comfortable use.

SPECIFICATIONS

Detailed technical specifications for the Vaporesso Vibe Nano Pro Kit:

Parameter	Value
Brand	Vaporesso
Product Name	Vibe Nano Pro Kit
Dimensions	89.5 x 50.5 x 21.3mm
Pod Capacity	4.5ml
Resistance Range (0.8Ω Pod)	ECO: 14W, 0.8Ω; PWR: 24W, 0.4Ω
Battery Capacity	1500mAh
Display	0.96" TFT screen
Charging Current	Type-C, 2A
Weight	80g

One Pod Two Experiences

0.8Ω

ECO:
14W, 0.8Ω

PWR:
24W, 0.4Ω



1.0Ω

ECO:
12W, 1.0Ω

PWR:
20W, 0.6Ω



Figure 3: Pod Compatibility and Power Settings. This image illustrates the different pod resistances (0.8Ω and 1.0Ω) compatible with the Vibe Nano Pro, along with their recommended wattage settings for both ECO and PWR modes, offering users flexibility in their vaping experience.

Vaporesso VIBE SERIES 1.0Ω DUAL MESH POD 2pcs Vaporesso VIBE SERIES 0.8Ω DUAL MESH POD 2pcs Vibe Series All Compatible, Fit For Sticks & Box Mods			
			
Vibe	Vibe Nano Pro	Vibe Se	Vibe Nano
0.54" OLED Screen Battery Indicator	0.96" TFT Screen Battery Indicator	RGB LED Indicator Battery Indicator	RGB LED Indicator Battery Indicator
✓ Power&Airflow Adjustable	✓ Power&Airflow Adjustable	✓ Power&Airflow Adjustable	✓ Power&Airflow Adjustable
1100mAh Battery Capacity	1500mAh Battery Capacity	1100mAh Battery Capacity	1100mAh Battery Capacity
DC 5V/1A, Type-C Charging	DC 5V/2A, Type-C Charging	DC 5V/1A, Type-C Charging	DC 5V/1A, Type-C Charging
Auto Draw Activation	Auto Draw Activation	Auto Draw Activation	Auto Draw Activation

Figure 4: Vaporesso Vibe Series Comparison. This table provides a side-by-side comparison of various Vaporesso Vibe series devices, highlighting differences in screen type, battery capacity, charging specifications, and activation methods, demonstrating the Vibe Nano Pro's position within the product line.

SETUP

1. Charging the Device

Before first use, fully charge the device. Connect the included Type-C USB cable to the charging port on the bottom of the device and plug the other end into a suitable power source (e.g., wall adapter, computer USB port). The 0.96" TFT screen will indicate the charging status. The device supports 2A quick charging.

2. Filling the Pod

The Vaporesso Vibe Nano Pro Kit comes with a pre-installed 0.8Ω Dual Mesh Pod. To fill the pod:


1. Remove the pod from the device.

2. Locate the filling port on the pod.
3. Carefully open the silicone plug.
4. Insert the nozzle of your e-liquid bottle into the filling port and fill the 4.5ml pod.
5. Securely close the silicone plug.
6. Re-insert the pod into the device, ensuring it clicks into place.


Note: For first-time use or with a new pod, allow the e-liquid to soak into the coil for at least 5-10 minutes before vaping to prevent dry hits and ensure proper saturation.

Simple to Start, Clear to See

4.5ML Visible Pod, Easy Fill

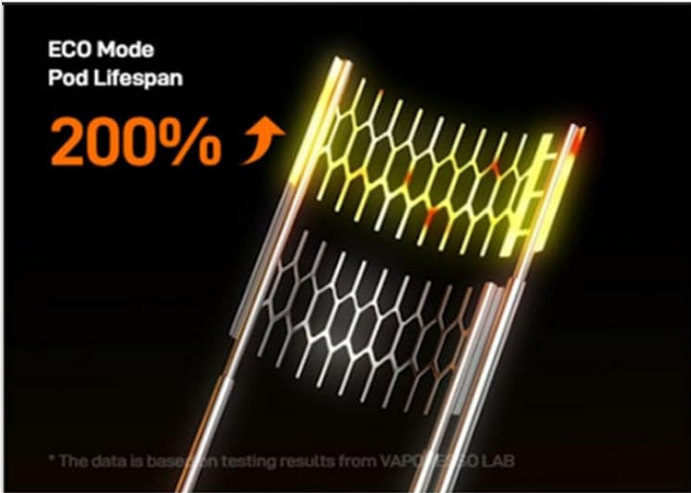


Ultra-Fast 0.01s Auto-Draw Activation



ECO Mode Pod Lifespan

200% ↑



* The data is based on testing results from VAPORPRESSO LAB

**SMOOTHER
LASTING LONGER**

PWR Mode Vapor Production

50% ↑



* The data is based on testing results from VAPORPRESSO LAB

**RICHER
STRONGER**

Figure 5: Pod Filling and Activation. This image demonstrates the easy top-fill mechanism of the 4.5ml visible pod and highlights the device's ultra-fast 0.01s auto-draw activation. It also visually represents the difference in vapor production between ECO and PWR modes, indicating smoother and richer experiences respectively.

OPERATING INSTRUCTIONS

1. Power On/Off

The Vaporesso Vibe Nano Pro Kit is primarily an auto-draw device. Simply inhale from the mouthpiece to activate. There

is no manual power button for on/off functionality.

2. Switching Between ECO and PWR Modes

The device features a slider button to switch between ECO (Economy) and PWR (Power) modes. This slider also allows for simultaneous adjustment of power and airflow, enabling you to switch between a tighter or looser draw.

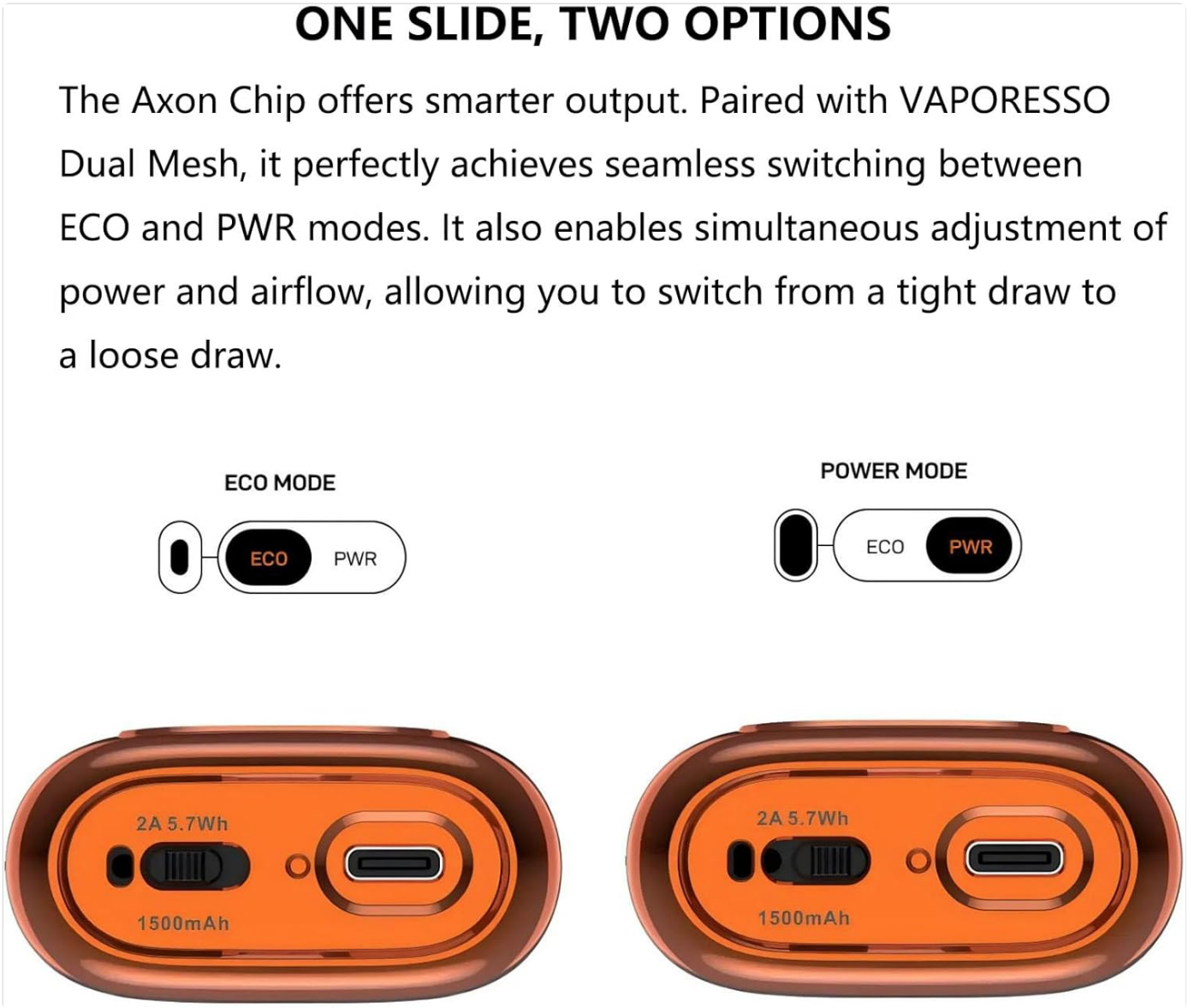


Figure 6: ECO and PWR Mode Selection. This diagram clearly shows the physical slider on the device that allows users to easily toggle between ECO mode for extended battery life and PWR mode for increased vapor production and flavor intensity.



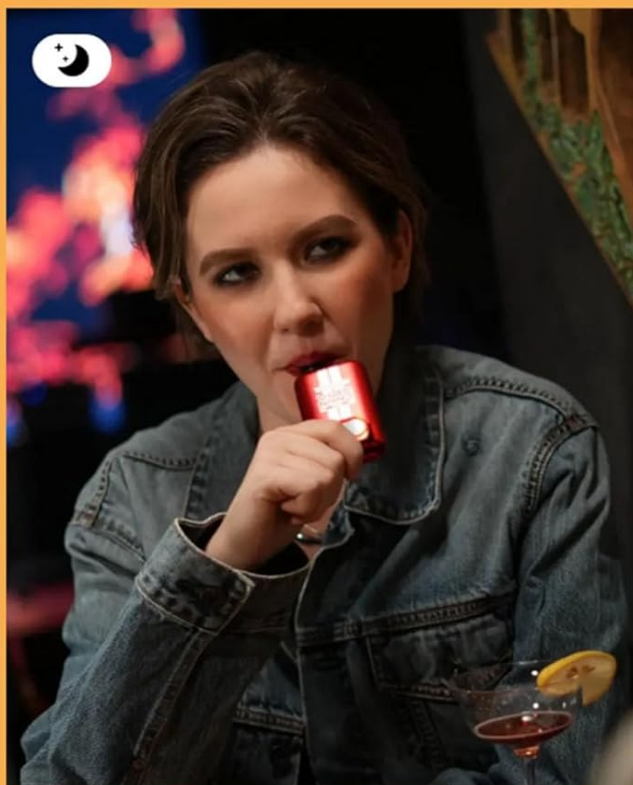
4.5ML VIBE POD One Fill All Day

All-Day Vibe, All-Night Thrill



ECO Mode

The perfect start to your day



PWR Mode

The power for your night

Figure 7: Usage in ECO and PWR Modes. These images depict individuals using the Vaporesso Vibe Nano Pro, illustrating the device's adaptability for different times of day or preferences, with ECO mode for a perfect start and PWR mode for a more intense experience.

3. Resetting Puff Count (Hidden Mode)

To reset the puff counter displayed on the 0.96" TFT screen:

- Slide the mode button (ECO/PWR slider) three times in quick succession.

Calling All Detail Enthusiasts!

Hidden Mode: Slide the button three times in succession to reset the puff count



Radiant Shine,
Exceptional
Quality



0.96" TFT
Screen



Ergonomic Mouthpiece,
Perfectly Contoured



Runway Curves, Comfort in Hand



Figure 8: Device Details and Hidden Features. This composite image showcases various aspects of the Vibe Nano Pro, including the method to reset the puff count via a hidden mode, the device's radiant finish, the clear 0.96-inch TFT screen, the ergonomically designed mouthpiece, and the comfortable "Runway Curves" for in-hand feel.

MAINTENANCE

1. Cleaning the Device

Regular cleaning helps maintain the device's performance and appearance:

- Wipe the device body with a dry, soft cloth.
- If e-liquid condensation accumulates around the pod connection area, gently wipe it with a cotton swab or tissue.
- Do not use harsh chemicals or abrasive cleaners.

2. Pod Replacement

The pod (with integrated coil) is a consumable part and should be replaced when you notice a burnt taste, reduced vapor production, or a change in flavor. To replace the pod:

1. Remove the old pod from the device.
2. Dispose of the old pod responsibly.
3. Insert a new Vaporesso Vibe Series Pod into the device, ensuring it is securely seated.
4. Fill the new pod with e-liquid as described in the "Setup" section and allow it to prime for 5-10 minutes.

TROUBLESHOOTING

If you encounter any issues with your Vaporesso Vibe Nano Pro Kit, please refer to the following common problems and solutions:

Problem	Possible Cause	Solution
No vapor/Device not firing	Low battery; Pod not properly connected; Coil burnt out; Airflow sensor blocked.	Charge the device; Re-insert pod firmly; Replace pod; Clean airflow sensor.
Burnt taste	Coil dry/burnt; E-liquid level too low.	Ensure pod is primed; Refill e-liquid; Replace pod.
Leaking	Overfilled pod; Worn-out pod; Condensation.	Do not overfill; Replace pod; Clean condensation regularly.
Weak flavor/vapor	Coil nearing end of life; Low battery; Incorrect mode.	Replace pod; Charge device; Switch to PWR mode.

SAFETY INFORMATION AND WARNINGS

Important Safety Notice:

- This product is intended for use with nicotine-free e-liquids only.
- This product does not contain nicotine, tobacco, or any pre-filled cartridges/refills.
- Keep out of reach of children and pets.
- Do not expose the device to extreme temperatures, direct sunlight, or water.
- Do not disassemble or modify the device.
- Use only the provided charging cable and recommended power sources.
- If the device shows signs of damage, overheating, or unusual behavior, discontinue use immediately.

WARRANTY AND SUPPORT

Your Vaporesso Vibe Nano Pro Kit comes with a warranty. Please refer to the included Warranty Card in your package for detailed terms and conditions, including warranty period and claim procedures.

For technical support, troubleshooting assistance beyond this manual, or warranty claims, please contact Vaporesso customer service or the retailer from whom you purchased the product. Contact information can typically be found on the Warranty Card or the official Vaporesso website.

