

Creality Hi Extrusion Kit

Creality Hi Extrusion Kit Extruder Instruction Manual

Model: Hi Extrusion Kit

INTRODUCTION

This manual provides detailed instructions for the installation, operation, and maintenance of your Creality Hi Extrusion Kit Extruder. Please read this manual thoroughly before use to ensure proper function and longevity of the product.

SAFETY INFORMATION

Always follow basic safety precautions when handling 3D printer components.

- Ensure the 3D printer is powered off and unplugged before installation or maintenance.
- Handle components with care to avoid damage.
- Keep out of reach of children.
- Refer to your 3D printer's main manual for additional safety guidelines.

PACKAGE CONTENTS

Verify that all items are present in the package:

- Creality Hi Extrusion Kit (1 unit)

SETUP & INSTALLATION

This section guides you through the process of installing the Creality Hi Extrusion Kit Extruder onto your compatible 3D printer.

1. **Preparation:** Ensure your Creality Hi or Creality Hi Cambo 3D printer is powered off and unplugged from the main power supply. Allow any hot components to cool down completely.
2. **Remove Existing Extruder (if applicable):** Carefully disconnect any wiring and unmount the old extruder assembly from the printer carriage. Refer to your printer's specific disassembly instructions if needed.
3. **Mount the New Extrusion Kit:** Align the Creality Hi Extrusion Kit with the mounting points on the printer carriage. Secure it using the appropriate screws.

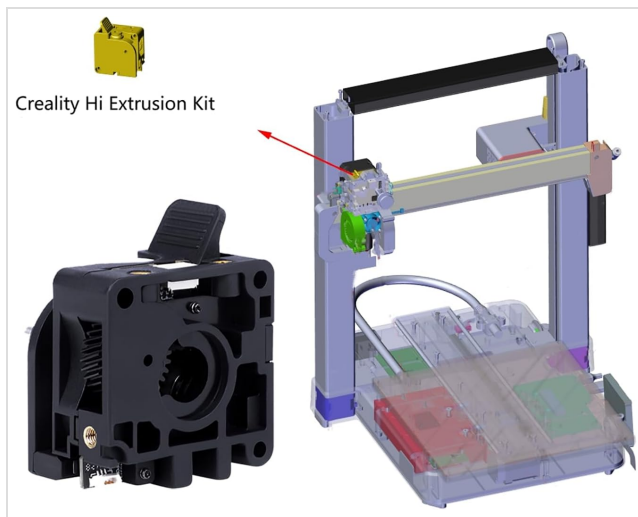


Image: The Creality Hi Extrusion Kit shown next to a diagram of a 3D printer, indicating its mounting location. This illustrates where the extrusion kit should be installed on the printer frame.

4. **Connect Wiring:** Reconnect all necessary wiring to the new extrusion kit. Ensure connections are secure and correctly oriented.



Image: A detailed view of the Creality Hi Extrusion Kit, highlighting the electrical connector port and brass inserts for mounting. This shows the connection points for the printer's wiring.

5. **Verify Installation:** Gently check that the extrusion kit is firmly attached and all cables are routed safely without obstruction.

OPERATING INSTRUCTIONS

Once installed, the Creality Hi Extrusion Kit operates as part of your 3D printer's extrusion system.

1. **Power On:** Plug in and power on your 3D printer.
2. **Filament Loading:**
To load filament, gently press the lever on the side of the extruder to release tension on the filament drive gear.

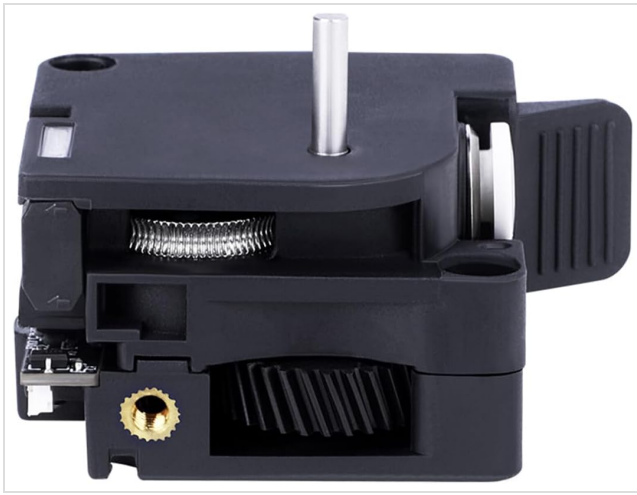


Image: A side view of the extrusion kit, showing the lever used to open the filament path and the textured drive gear. This illustrates the mechanism for loading filament.

Insert the filament into the designated entry point until it passes through the drive gears and into the hotend. Release the lever.



Image: An angled perspective of the extrusion kit, highlighting the filament entry point and the internal gears. This provides a clearer view of how filament is fed into the extruder.

3. **Printing:** Initiate your print job as usual through your 3D printer's interface. The extrusion kit will feed filament precisely during the printing process.

MAINTENANCE

Regular maintenance ensures optimal performance of your extrusion kit.

- **Clean Drive Gears:** Periodically inspect the filament drive gears for any accumulated filament dust or debris. Use a small brush or compressed air to clean them.
- **Check for Wear:** Examine the components for signs of wear, especially the drive gears and the filament path. Replace parts if significant wear is observed.
- **Lubrication:** No user lubrication is typically required for this component. Refer to your 3D printer's main manual for general lubrication guidelines.

TROUBLESHOOTING

Common issues and their potential solutions:

- **Filament Not Feeding:**
 - Check if the filament is properly loaded and the tension lever is engaged.

- Ensure there are no clogs in the hotend or nozzle.
 - Verify the drive gears are clean and not slipping.
- **Inconsistent Extrusion:**
 - Inspect the filament path for any obstructions.
 - Check for partial clogs in the nozzle.
 - Ensure the filament spool is unwinding smoothly.
- **Grinding Filament:**
 - This often indicates a clog or too much back pressure. Clear any clogs in the hotend.
 - Reduce print speed or increase hotend temperature if necessary.

SPECIFICATIONS

Feature	Detail
Brand	Creality
Compatible Models	Creality Hi, Creality Hi Cambo 3D printers
Item Weight	1.06 ounces (approx. 30 grams)
Package Dimensions	7.48 x 4.72 x 1.97 inches (19 x 12 x 5 cm)
Supported File Format	STL
Compatible Material	Acrylonitrile Butadiene Styrene (ABS), Polylactic Acid (PLA)
Color	Black
ASIN	B0F48L5P6F
GTIN	00198549052571



WARRANTY AND SUPPORT





For warranty information and technical support, please refer to the official Creality website or contact your authorized reseller. Keep your purchase receipt for warranty claims.

Manufacturer: Creality

Date First Available: April 9, 2025

Related Documents - Hi Extrusion Kit

	Creality Sprite Extruder Pro Kit User Manual User manual for the Creality Sprite Extruder Pro Kit, detailing parts list, installation instructions, motherboard wiring, material guide, and leveling tips.
	Creality Sprite Extruder Pro Kit User Manual User manual for the Creality Sprite Extruder Pro Kit, detailing parts list, installation instructions, wiring diagram, material guide, and leveling tips.

	<p>Creality CR-M4 3D Printer User Manual: Setup, Operation, and Printing</p> <p>Comprehensive user manual for the Creality CR-M4 3D printer, covering pulley adjustment, auto-leveling, filament loading, slicing software (Creality Print), and printing methods via USB or Creality Cloud.</p>
	<p>Creality Ender-3 Neo 3D Printer User Manual</p> <p>Comprehensive user manual for the Creality Ender-3 Neo 3D printer, covering installation, operation, features, and troubleshooting. Learn to set up and use your 3D printer effectively.</p>
	<p>Creality Cloud Networking and Printer Maintenance Guide</p> <p>This guide explains how to connect your Creality 3D printer to the Creality Cloud using Wi-Fi and provides essential routine maintenance tips for optimal performance, including lubrication, print bed care, and extruder maintenance.</p>
	<p>Creality K1 SE 3D Printer User Manual - Setup, Printing, and Maintenance Guide</p> <p>Comprehensive user manual for the Creality K1 SE FDM 3D printer. Learn how to unbox, set up, perform your first print, and maintain your device for optimal performance. Includes detailed instructions and troubleshooting tips.</p>