

[Manuals.plus](#) /

› [KUNFINE](#) /

› KUNFINE 12.3" Android Car Stereo Head Unit for Audi A6/A7 (2012-2018) User Manual

KUNFINE 12.3" Octa Core 8G+128G Android Head Unit (RMC)

KUNFINE 12.3" Android Car Stereo Head Unit User Manual

For Audi A6 AL6 A7 (2012-2018) - Model: Octa Core 8G+128G (RMC)

1. PRODUCT OVERVIEW

The KUNFINE 12.3" Android Car Stereo Head Unit is designed to upgrade the in-car entertainment and navigation experience for Audi A6, AL6, and A7 models manufactured between 2012 and 2018. This unit integrates advanced features such as CarPlay, Android Auto, GPS navigation, and a high-resolution IPS touchscreen display.

Key Features:

- Built-in Wireless CarPlay & Android Auto for seamless smartphone integration.
- Powerful Octa Core CPU with 8GB RAM and 128GB ROM for smooth performance.
- Android Operating System for access to a wide range of applications.
- Supports USB input and all audio playback formats.
- Internal Bluetooth for stereo music streaming and hands-free calling.
- Internal Wi-Fi with hot-spot sharing capabilities.
- Supports car rear view camera (aftermarket RCA type).
- Multi-touch sensitive IPS full HD screen.
- Supports steering wheel controls.
- Multi-language OSD (English, French, German, Spanish, Italian, etc.).

Android System



Figure 1: Overview of the Android System interface with various applications.

Wireless Carplay & Android Auto



CarPlay

Wireless & wired connections

1. Bluetooth connection between car stereo and smart phone
2. Turn on App"zlink5"on car stereo
3. Enjoy Wireless Apple Carplay



Android Auto

Wireless & wired connections

1. Download Android Auto app on your phone
2. Bluetooth connection between car stereo and smart phone
3. Turn on App "Zlink5" on car stereo
4. Enjoy Wireless Android Auto (Not supported samsung phones)



Figure 2: Explanation of wireless and wired connections for CarPlay and Android Auto.



Figure 3: Display of various supported navigation applications.

2. PACKAGE CONTENTS

Verify that all items listed below are included in your package:

- 1x Car Android Head Unit with Mask
- 1x GPS Antenna
- 1x Power Cable (Plug & Play)
- 2x USB Port Cable
- 1x RCA Expand Cable
- 1x RCA Connector for Reverse Camera
- 1x Install Kit
- 1x External Mic
- 1x AHD 720 Reverse Camera

3. SETUP AND INSTALLATION

Before beginning installation, ensure your vehicle is compatible with this head unit. This unit is suitable for Audi A6, AL6, A7 models from 2012-2018. Professional installation is recommended.

Compatibility Check:

Confirm your original car's MMI system version (RMC, HN+R, MHI2) and the presence of an AMI port or Air Bag button. Refer to the image below for visual guidance.

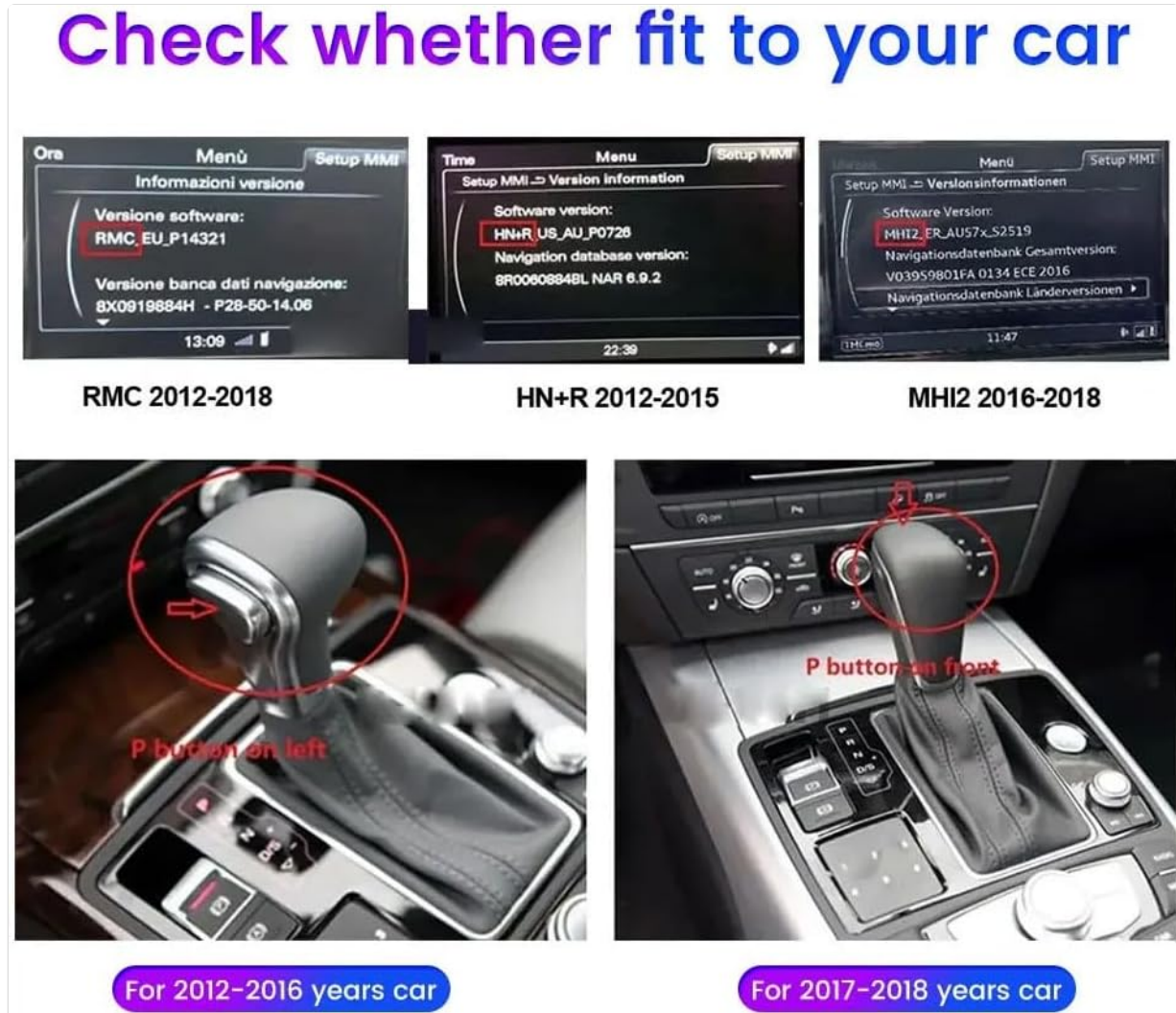


Figure 4: Guide to check MMI system version and physical buttons for compatibility.

Installation Overview:

The new head unit replaces the original display, integrating seamlessly into the dashboard. The product includes an AUX port. If your original car has an AMI port or Air Bag button, please contact the seller for specific instructions.

Installation Effect



Before Installation

After Installation

Please Attention
Our Product includes AUX port



Please confirm if the original car has AMI port or Air Bag button.
if yes, please Contact seller.Thank you so much

Figure 5: Visual comparison of the dashboard before and after the head unit installation.

4. OPERATING INSTRUCTIONS

Switching Between Systems:

The head unit supports switching between the new Android system and the original vehicle system. To switch back to the new system, simply touch any position on the screen.

Your browser does not support the video tag.

Video 1: Demonstrates switching between the original Audi MMI system and the new Android system, showing retention of original vehicle functions and wireless CarPlay/Android Auto features.

Your browser does not support the video tag.

Video 2: Illustrates the seamless integration and functionality of the 12.3" touchscreen, including navigation, music playback, and voice control.

CarPlay and Android Auto:

Seamlessly integrate your iOS or Android device. Use voice assistants to control functions without distraction. The system supports both wireless and wired connections.

Navigation:

Utilize various navigation applications available on the Android system. The system supports map navigation and automatically switches between day and night modes for optimal visibility.

Multimedia Playback:

Enjoy audio and video playback through USB input or Bluetooth streaming from your mobile phone. The unit supports all audio formats.

Steering Wheel Control:

The head unit retains and supports the original steering wheel control functions, allowing you to manage audio, calls, and other features conveniently.



Figure 6: Shows the head unit's compatibility with original car settings like amplifier system, radio, CD player, Bluetooth, backup camera display, and steering wheel controls.

Rear View Camera:

The unit supports aftermarket RCA type backup cameras. For original factory backup camera compatibility, additional information may be required.

360 Rear View Camera

(Optional)



Figure 7: Illustrates the optional 360-degree rear view camera system, showing multiple camera views.

5. MAINTENANCE

To ensure the longevity and optimal performance of your KUNFINE head unit, follow these general maintenance guidelines:

- **Cleaning:** Use a soft, dry cloth to clean the screen and exterior. Avoid abrasive cleaners or solvents that may damage the surface.
- **Temperature:** Avoid exposing the unit to extreme temperatures, both hot and cold, for extended periods.
- **Software Updates:** Periodically check for and install software updates provided by KUNFINE to ensure the system runs efficiently and securely.
- **Power Management:** Ensure the vehicle's electrical system is stable. Avoid frequent power interruptions.

6. TROUBLESHOOTING

If you encounter any issues with your head unit, refer to the following common troubleshooting steps:

- **No Power:** Check all power connections and ensure they are securely plugged in. Verify the vehicle's fuse related to the head unit.
- **No Sound:** Check volume settings on both the head unit and your connected device. Ensure all audio cables are properly connected. Verify the correct audio input source is selected.
- **Touchscreen Unresponsive:** Try restarting the unit. If the issue persists, a factory reset might be necessary (consult the seller for guidance on this).
- **CarPlay/Android Auto Connection Issues:** Ensure Bluetooth and Wi-Fi are enabled on both the head unit and your smartphone. Try reconnecting the device. For wired connections, check the USB cable.
- **GPS Signal Loss:** Ensure the GPS antenna is properly installed and has a clear view of the sky.

For persistent issues or problems not covered here, please contact KUNFINE customer support.

7. SPECIFICATIONS

Feature	Specification
Brand	KUNFINE
Model Name	Kunfine CarPlay Android Auto 12.3" Headunit
Vehicle Service Type	Car
Screen Size	12.3 Inches
Special Feature	Voice Control, App Integration
Connectivity Technology	USB
Map Type	North America
Operating System	Android
Memory Storage Capacity	128 GB
Touch Screen Type	Capacitive
Display Type	LCD
Control Method	Touch
Supported Satellite Navigation System	GPS
Connectivity Protocol	Bluetooth, Wi-Fi

Resolution comparison

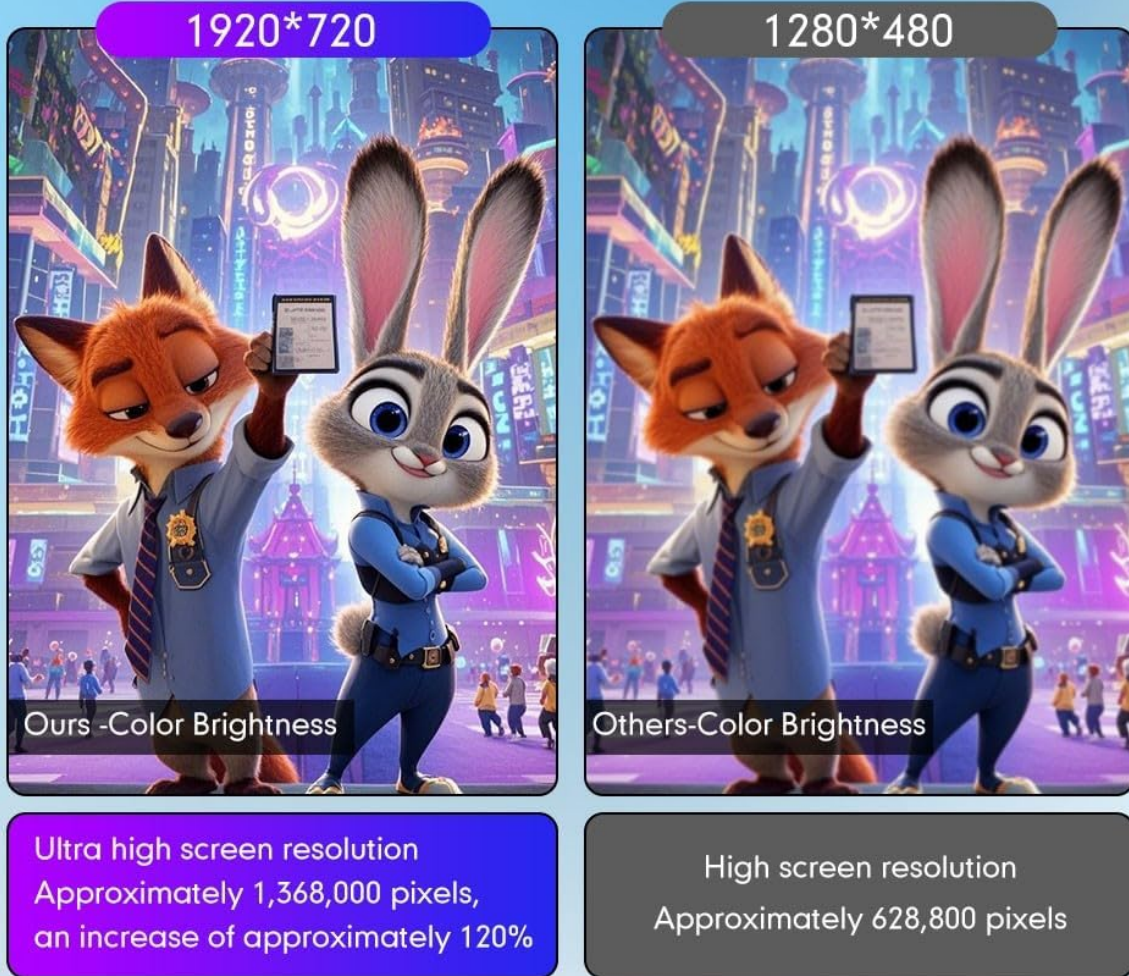


Figure 8: Comparison of screen resolutions, highlighting the unit's 1920x720 HD resolution.

8. WARRANTY AND SUPPORT

Warranty Information:

This product comes with a **one-year warranty** covering non-human damage. Please retain your proof of purchase for warranty claims.

Customer Support:

For any questions, technical assistance, or warranty claims, please contact the seller directly. Your inquiries are always welcome.