

## Meplzian Arched Medicine Cabinet

# Meplzian Arched Medicine Cabinet with Mirror (16x30 Inch) Instruction Manual

## INTRODUCTION

This manual provides detailed instructions for the assembly, installation, operation, and maintenance of your Meplzian Arched Medicine Cabinet with Mirror. Please read all instructions carefully before beginning installation to ensure safe and correct usage.

## SAFETY INFORMATION

Always follow the assembly and installation instructions provided in this manual. Ensure the cabinet is securely mounted to the wall and not overloaded to prevent accidents. Keep the area around the cabinet clear to avoid potential hazards.

- Verify all parts are present before assembly.
- Use appropriate tools and safety gear during installation.
- Do not exceed the maximum weight capacity of 33 pounds.
- Ensure the mounting surface is structurally sound.

## PRODUCT FEATURES

- **Reversible Door:** The door can be configured to open from either the left or right side.
- **High-Quality Construction:** Made from E1 MDF board, copper-free silver mirror, and an aluminum alloy metal frame. Features a wooden backplane for stability.
- **Adjustable Storage:** Includes three glass shelves for customizable storage space.
- **Space-Saving Design:** Wall-mounted design provides efficient storage for personal items like toothbrushes, shampoo, and cosmetics.
- **Modern Aesthetic:** Arched design with a brushed black finish.
- **Waterproof:** Designed for bathroom environments.

## PACKAGE CONTENTS

- Medicine Cabinet components
- User Manual (this document)
- Hardware for assembly and mounting

## PRODUCT DIMENSIONS

# Product Dimensions

Please check the size carefully before ordering!



The Meplzian Arched Medicine Cabinet measures approximately 15.75 inches (W) x 5.24 inches (D) x 29.92 inches (H). The internal shelf heights are approximately 6 3/4 inches, 7 1/8 inches, and 7 1/8 inches. Please refer to the diagram above for detailed measurements before installation.

## INSTALLATION & ASSEMBLY

## Before You Begin: Measuring Your Space

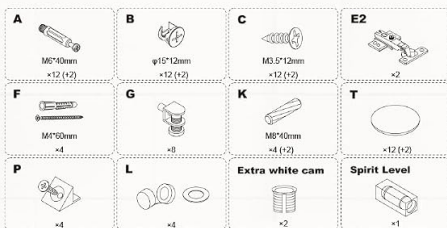
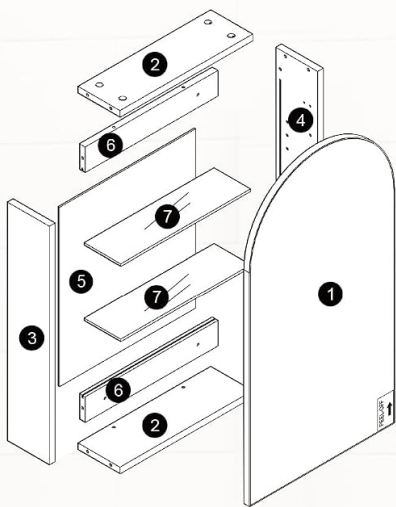
Your browser does not support the video tag.

Before mounting, it is crucial to measure your bathroom space to ensure proper fit and placement. This video demonstrates how to determine the appropriate height and width for your mirror cabinet installation, especially considering existing fixtures like wall lights.

## Assembly Steps

# Assembly Required

Simple Installation



before

After

The cabinet requires assembly. Follow the numbered steps in the provided diagram. Attach the back panel to the side panels, then secure the top and bottom panels. Install the hinges and the mirror door. Finally, insert the glass shelves into the desired positions.

## Door Reversibility

# Open to Left & Open to Right

Choose the door opening method that suits you based on the actual situation.



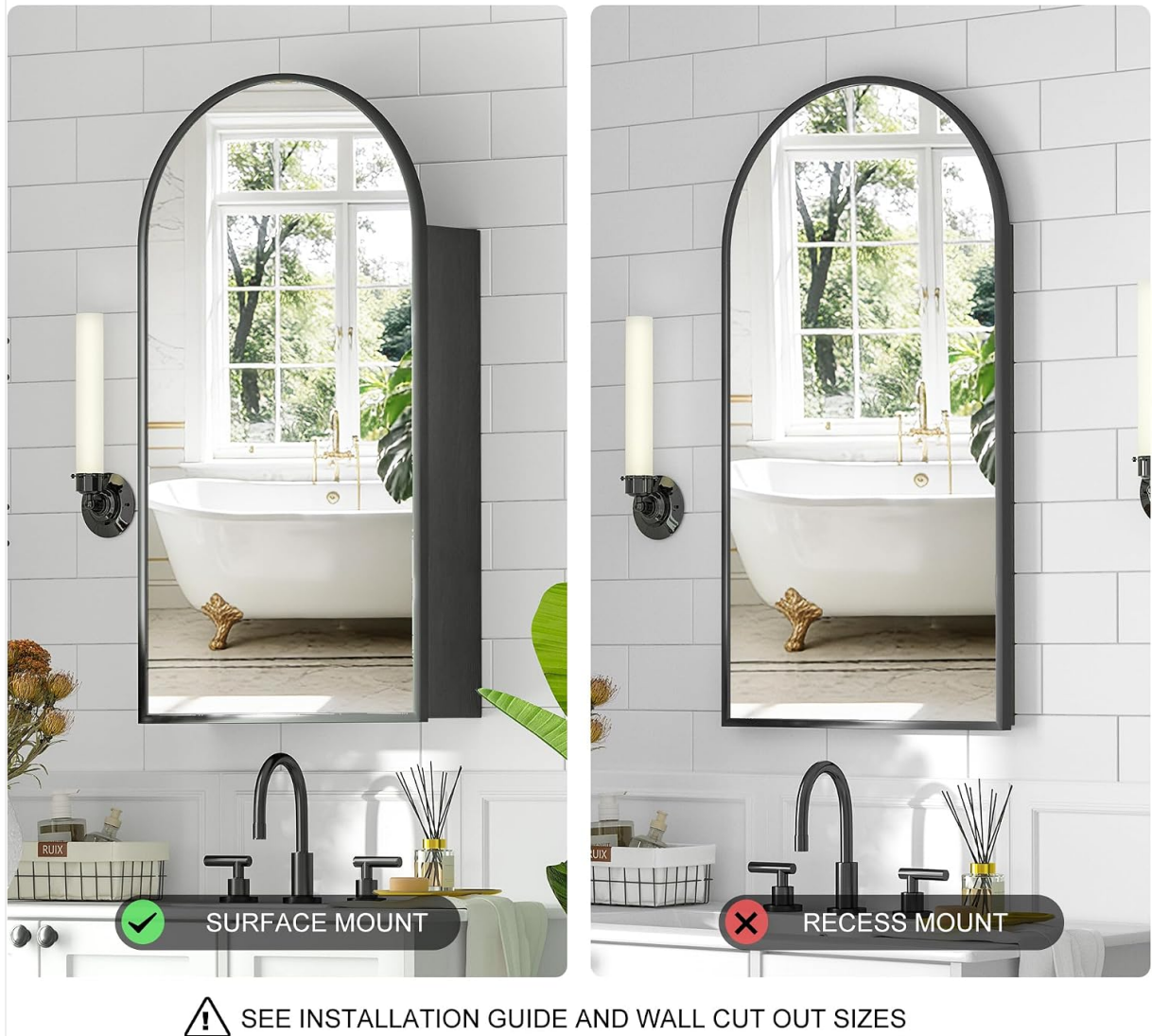
The cabinet door is designed to be reversible, allowing it to open from either the left or right side. This flexibility enables you to choose the most suitable opening direction for your bathroom layout.



To reverse the door opening direction, carefully follow the instructions for hinge placement and screw holes as indicated in the diagram. Ensure all screws are tightened securely after adjusting the door.

### **Mounting Options**

# Medicine Cabinet -Wall Mounted Only



This medicine cabinet is designed for **surface mounting only**. It cannot be recessed into the wall. Ensure your installation plan accommodates a surface-mounted unit.



Detailed installation methods are provided for various wall types, including drywall, studs, and concrete. Use the appropriate hardware and techniques for your specific wall construction to ensure a secure installation.

## OPERATION

### Adjusting Shelves



High Quality Hinges

Tempered Glass Shelves

Aluminum Alloy Frame

The cabinet features three tempered glass shelves that can be adjusted to different heights to accommodate various item sizes. To adjust a shelf, carefully lift it from its current position and place it onto the desired shelf pins. Ensure the shelf is level and securely seated before placing items on it.

## MAINTENANCE

- **Cleaning the Mirror:** Use a soft, lint-free cloth and a non-abrasive glass cleaner. Spray cleaner onto the cloth, not directly onto the mirror, to avoid liquid seeping into the edges.
- **Cleaning the Cabinet:** Wipe the cabinet surfaces with a soft, damp cloth. Avoid harsh chemicals or abrasive cleaners that could damage the finish.
- **Hardware Check:** Periodically check all screws and hardware to ensure they remain tight. Tighten if necessary.
- **Avoid Overloading:** Do not place excessively heavy items on the shelves or overload the cabinet, as this can compromise its stability and structural integrity.

## TROUBLESHOOTING

Problem	Possible Cause	Solution
---------	----------------	----------

Problem	Possible Cause	Solution
Door does not close properly or is misaligned.	Hinges are loose or improperly adjusted.	Adjust the hinge screws to align the door. Ensure all hinge screws are tight.
Cabinet feels unstable after mounting.	Mounting hardware is not securely fastened or incorrect hardware was used.	Re-check all mounting points and ensure screws are fully tightened into appropriate wall anchors or studs. Consult a professional if unsure.
Glass shelves slide or are not level.	Shelf pins are not correctly inserted or are damaged.	Ensure shelf pins are fully inserted and level. Replace any damaged pins.

## TECHNICAL SPECIFICATIONS

Specification	Detail
Brand	Mepplzian
Model Name	Arched Medicine Cabinet
Product Dimensions (D x W x H)	5.1" x 15.7" x 31.4" (approx. 13cm x 40cm x 80cm)
Item Weight	25.2 Pounds (approx. 11.4 kg)
Material	Engineered Wood (E1 MDF board), Glass (copper-free silver mirror, tempered glass shelves), Aluminum Alloy Metal Frame
Color	Brushed Black
Number of Shelves	3 (adjustable glass shelves)
Number of Doors	1 (reversible)
Mounting Type	Wall Mount (Surface Mount Only)
Maximum Weight Capacity	33 Pounds (approx. 15 kg)
Assembly Required	Yes

## WARRANTY AND CUSTOMER SUPPORT

Mepplzian is committed to providing high-quality products and customer service. For any issues, questions, or concerns regarding your Arched Medicine Cabinet, please refer to your purchase documentation for specific warranty details and contact information for customer support. We aim to assist you promptly with any problems you may encounter.

Typically, products come with a standard manufacturer's warranty covering defects in materials and workmanship. Please retain your proof of purchase for warranty claims.

