

JIYHF P100

JIYHF Portable Power Bank with AC Outlet P100 User Manual

Model: P100

1. INTRODUCTION

The JIYHF Portable Power Bank P100 is a versatile power solution designed to keep your electronic devices charged on the go. With a 99.9Wh (27,000mAh) lithium-ion battery, it complies with FAA regulations for air travel, making it suitable for various environments. It features multiple output ports, including a 110V/100W AC outlet, a 65W USB-C Power Delivery (PD) port, two QC3.0 USB-A ports, and a 12V DC output, allowing simultaneous charging of several devices. The unit also includes an adjustable LED flashlight and an LCD display for convenience.



Figure 1: JIYHF Portable Power Bank P100 Overview

2. SETUP AND CHARGING THE POWER BANK

2.1 Initial Charge

Before first use, fully charge your JIYHF P100 Power Bank. The unit can be fully recharged in approximately 2 hours using a 65W+ charger via the USB-C PD port. It can also be recharged using the included car charger or an optional solar panel (not included).

2.2 Recharging Options

- **USB-C PD Port:** Connect a 65W or higher USB-C PD charger to the USB-C port for fast recharging.
- **Car Charger:** Use the included car charger cable to recharge the power bank from your vehicle's 12V outlet.
- **Solar Panel (Optional):** The power bank supports recharging via a compatible solar panel (13V-16V output, not included).



Figure 2: Multiple Recharging Options

3. OPERATING INSTRUCTIONS

3.1 Powering On/Off

Press and hold the main power button (usually marked with a power symbol) for approximately 3 seconds to turn the unit on or off. The LCD display will illuminate, showing the battery percentage.

3.2 Using AC Output

To activate the 110V/100W AC outlet, press and hold the 'AC Power' button for 3 seconds. A green LED indicator next to the AC outlet will light up, and the LCD display will show 'AC Output'. Plug your device's standard AC plug into the outlet. To turn off the AC output, press and hold the 'AC Power' button again for 3 seconds.

110V/100W AC Output

power for small power appliances such as ***laptops, fans, mini-fridges, speakers and photography lights, soldering irons, inflatable pumps, etc.***



Figure 3: AC Output Port

3.3 Using USB and DC Outputs

- **USB-C PD (65W In/Out):** Connect your USB-C compatible devices (laptops, tablets, smartphones) for fast charging. This port also serves as an input for recharging the power bank.
- **USB-A (QC3.0 18W Out):** Two USB-A ports are available for charging various USB-powered devices.
- **12V DC Output:** Use the 12V DC output port for devices requiring 12V power, such as mini-fridges or LED lights.

Charging various electronic devices



Figure 4: Charging Multiple Devices Simultaneously

3.4 LED Flashlight

To activate the LED flashlight, double-click the main power button. Subsequent single clicks will cycle through different modes (solid light, SOS, strobe). Double-click the main power button again to turn off the flashlight.



Figure 5: LED Spotlight Functionality

3.5 LCD Display

The LCD screen provides real-time information, including the remaining battery percentage, and indicators for AC and DC output status.

4. MAINTENANCE

4.1 Battery Management System (BMS)

The power bank features a built-in BMS that provides voltage, current, and heat management, ensuring the safety and stability of both the unit and connected devices. It is normal for the battery bank to generate some heat during use.

4.2 Battery Care

- Avoid completely depleting the battery before recharging to prolong its lifespan.
- It is recommended to charge the unit at least once every two weeks when not in use.
- While the unit can operate while recharging, prolonged use in this manner is not recommended.

4.3 Cold Weather Usage

Cold temperatures can affect the unit's battery capacity. For optimal performance in cold weather, keep the unit in an insulated cooler or connected to a power source (e.g., solar panel) to maintain battery capacity.

5. TROUBLESHOOTING

5.1 Overload Protection

The power bank is equipped with overload protection. Do not use electrical appliances that exceed the 100W AC outlet rated power. Overloading will cause the unit to shut down to protect itself.



Figure 6: Overload Warning

5.2 Capacitive/Inductive Loads

Some capacitive or inductive loads (e.g., air pumps, fans) may require surge power/current that can be multiple times their rated power. This may trigger the overpower protection mechanism of the power

station, which is normal.

5.3 Short-Circuit/Overpower Protection

If the DC outputs are short-circuited or overpowered, the unit will shut down to protect itself.

6. SPECIFICATIONS

- **Model Number:** P100
- **Product Dimensions:** 8.66 x 3.86 x 1.65 inches
- **Item Weight:** 2.2 pounds
- **Battery Type:** Lithium-ion (1 Nonstandard Battery included)
- **Battery Capacity:** 27000 Milliamp Hours / 99.9Wh
- **AC Output:** 110V/100W
- **USB-C PD Output:** 65W (In/Out)
- **USB-A Output:** 2 x QC3.0 18W
- **DC Output:** 12V
- **Special Features:** Digital Display, Fast Charging, Flashlight, Over Charging Protection, Short Circuit Protection
- **Manufacturer:** Guangzhou Dianchehui Technology Co.,Ltd.

7. WHAT'S INCLUDED

- JIYHF Portable Power Bank (P100) x1
- USB-C to USB-C Cable x1
- Car Charger x1
- Storage Bag x1
- User Manual x1

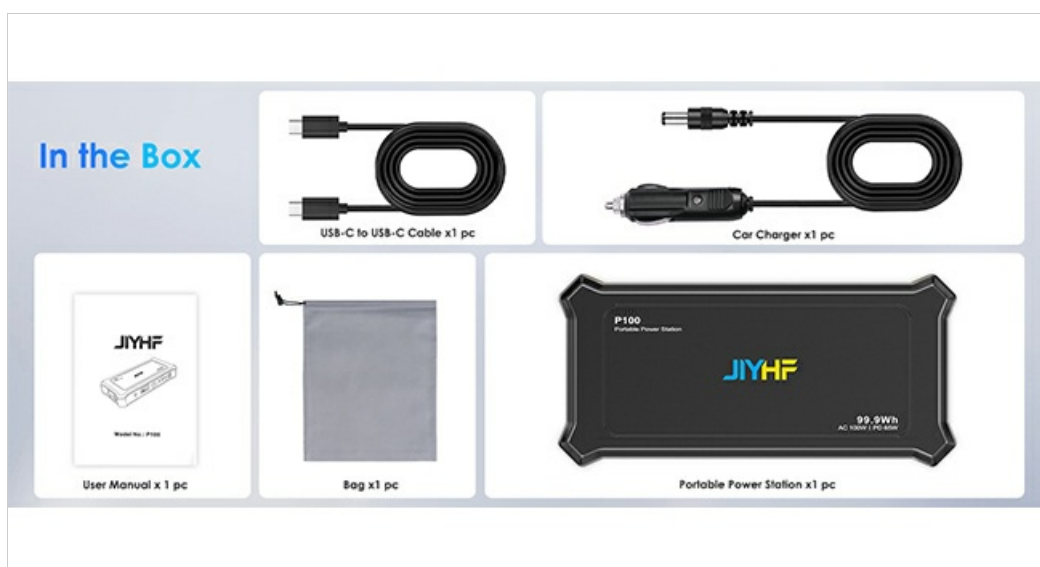


Figure 7: Package Contents

8. OFFICIAL PRODUCT VIDEO

Video 1: JIYHF Portable Power Bank with AC Outlet - Official Product Overview. This video demonstrates the features and usage of the JIYHF P100 Portable Power Bank, including its various ports and functions.

9. SAFETY INFORMATION

- Do not heat up the unit, or dispose of it in fire, water, or other liquids.
- Keep away from high humidity, dusty places.
- Do not disassemble or reassemble this unit.
- Do not drop, place heavy objects on, or hit the product strongly.
- This appliance is not intended for use by persons (including children) with reduced physical, sensory, or mental capabilities, or lack of experience and knowledge, unless they have been given supervision or instruction concerning use of the appliance by a person responsible for their safety.
- Children should be supervised to avoid that they play with this product.
- Do not cover the device with towels, clothing, and other fabrics.
- The unit may become hot when charging. This is normal.
- Do not charge the unit over the required time.
- Disconnect the unit when fully charged.
- Use the unit properly to avoid electronic shock.
- The product is only used for emergency situations; it cannot replace the standard DC or AC power in your home or office.

10. WARRANTY AND SUPPORT

For warranty information and technical support, please refer to the included user manual or contact JIYHF customer service directly. Contact details are typically provided within the user manual or on the manufacturer's official website.