

EUQQ Q10 AI

EUQQ Q10 AI Translation Earbuds User Manual

Model: Q10 AI

1. INTRODUCTION

Thank you for choosing the EUQQ Q10 AI Translation Earbuds. These advanced earbuds are designed to revolutionize communication with real-time language translation, high-fidelity audio, and intelligent noise cancellation. This manual provides detailed instructions for setup, operation, maintenance, and troubleshooting to ensure you get the most out of your device.



Image: The EUQQ Q10 AI Translation Earbuds resting in their open charging case, displaying the digital battery indicator.

2. SAFETY INFORMATION

Please read all safety warnings before using the earbuds to prevent injury or damage.

- Do not expose the earbuds or charging case to extreme temperatures, humidity, or liquids.

- Avoid dropping, impacting, or disassembling the device.
- Use only the provided charging cable and a certified power adapter.
- Prolonged listening at high volumes may cause hearing damage. Adjust volume to a safe level.
- Do not use the earbuds in situations where inability to hear ambient sounds could be dangerous (e.g., driving, cycling, walking in traffic).

3. WHAT'S IN THE BOX

Verify that all components are present:

- 2 x AI Language Translation Earbuds
- 1 x Charging Case
- 1 x Charging Cable (USB Type-C)
- 3 x S/M/L Ear Caps (one set pre-installed)
- 1 x User Manual (this document)

4. SETUP

4.1 Charging the Earbuds and Case

Before first use, fully charge the earbuds and charging case.

1. Place the earbuds into the charging case, ensuring they are correctly seated.
2. Connect the USB Type-C charging cable to the charging port on the case and plug the other end into a USB power source (e.g., wall adapter, computer USB port).
3. The digital display on the charging case will indicate the battery level. A full charge takes approximately 1 hour for the earbuds and case.



 **1 Hr** Fast Charge

Over 90 Hrs Standby Time

Always keep track of the remaining battery level of the earphones and be prepared at all times

Image: The earbuds and charging case with a USB-C cable connected, illustrating the charging process and battery life.

4.2 Pairing with Your Device (Bluetooth)

The earbuds use Bluetooth 5.4 for a stable and efficient connection.

1. Open the charging case. The earbuds will automatically enter pairing mode (indicated by flashing lights on the earbuds).
2. On your smartphone or Bluetooth-enabled device, go to Bluetooth settings and turn Bluetooth on.
3. Search for available devices and select "Q10 AI" from the list.
4. Once connected, the earbud lights will stop flashing, and you will hear a confirmation tone.

Upgraded Bluetooth 5.4

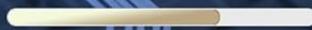
Bluetooth 5.4 technology allows more stable connections with lower power consumption.



Connection Range
increase **50%**



Stable Connection
increase **75%**



Transfer speed Range
increase **100%**

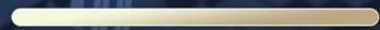


Image: A visual representation of upgraded Bluetooth 5.4 technology, highlighting increased connection range, stability, and transfer speed.

4.3 App Installation and Connection

For full translation functionality, download and connect to the "NebulaBuds" app.

1. Scan the QR code provided in the charging case or user manual, or search for "NebulaBuds" in your device's app store (iOS/Android).
2. Install the "NebulaBuds" app.
3. Ensure your phone's Bluetooth is on and the earbuds are connected.
4. Open the "NebulaBuds" app. It will automatically detect the earbuds and prompt for connection. Follow the

on-screen instructions to allow necessary permissions (e.g., microphone access).

5. Once connected, the app will display a "Connected" status, and you can access all translation features.

Enjoy Your Sound Music Anytime, Anywhere



Image: A four-step guide showing how to download the NebulaBuds app, turn on Bluetooth, open the app, and connect the earbuds.

5. OPERATING INSTRUCTIONS

5.1 Smart Touch Control

The earbuds feature intuitive touch controls for various functions:

- **Click MFB key:** Pause/Play music.
- **Double-click the left/right MFB buttons:** Next/Previous track (depending on app settings).
- **Click MFB button:** Answer/End a call.
- **Long press the MFB button:** Reject a call.
- **Press and hold the right MFB button for 2 seconds:** Activate Siri/Voice Assistant.
- **Press and hold the left MFB button for 2 seconds:** Switch between ANC (Active Noise Cancellation) mode, Normal mode, and Transparency mode.

Simultaneous Interpretation

Real-time translation with voice,
for international conferences



Image: Diagram illustrating the various touch control functions on the earbuds, such as play/pause, call management, and voice assistant activation.

5.2 Translation Modes

The earbuds offer multiple translation modes via the NebulaBuds app:

5.2.1 Touch Mode

Ideal for fluent, turn-based conversations. Each person wears an earbud. Touch your earbud before speaking, and the other person will hear the translation in their earbud.

Face-to-Face Translation. Dual-Ear Mode

Share earbuds with the other, then
you can both speak at the same time

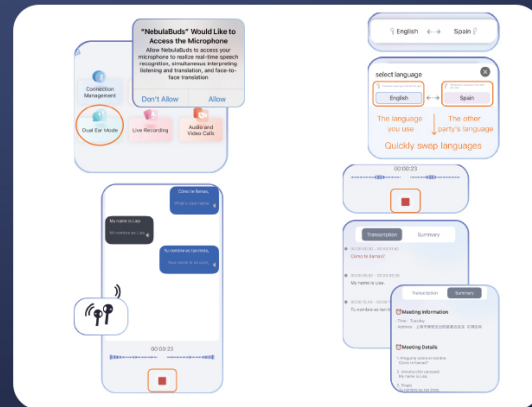


Image: Two individuals in a business setting, each wearing an earbud, demonstrating the Touch Mode for fluent conversation.

5.2.2 Free Speech Mode

For in-depth, one-on-one conversations. Each person wears an earbud and talks as normal without touching, allowing for hassle-free communication.

Summary & Playback

Historical recordings AI
Summary&Speaker Identification



Image: Two men in business attire, one holding a phone, engaged in conversation using earbuds in Free Speech Mode.

5.2.3 Speaker Mode

Useful for directions or ordering food. Wear one earbud yourself and speak; the translated results will be played through your phone's speaker, allowing others to hear.

Text-to-Image

Generates images based on provided text descriptions. You can choose the size and save the image.

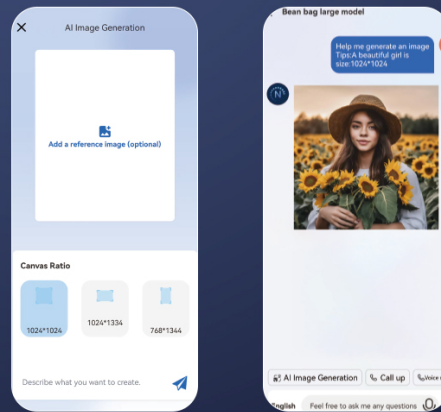


Image: A man and woman in a car, demonstrating Speaker Mode for translation, with the woman looking at a laptop.

5.2.4 Offline Mode

Supports offline translation in most parts of the world, allowing communication without an internet connection. Ensure necessary language packs are downloaded in the app beforehand.

Image-to-Image

Generates images based on a reference image and text description, with fixed image size.

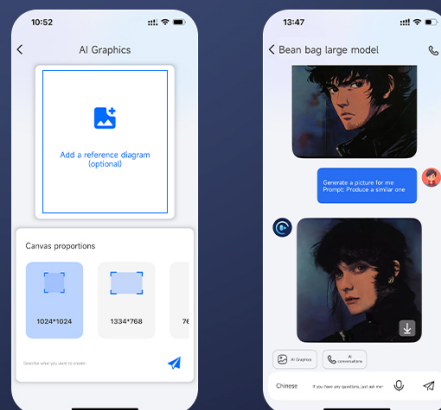


Image: Two men sitting outdoors, conversing, illustrating the use of Offline Mode for translation.

5.2.5 Simultaneous Interpretation

Provides real-time translation with voice, ideal for international conferences or lectures. The app interface allows you to select source and target languages and view the translated text.



Live Recording

很高兴我们能达成合作，接下来我们将策划安排项目的具体实施方案，具体细节我们下周一面聊？

...

I am very glad that we can reach cooperation. Next, we will plan and arrange the specific implementation plan of the project. We will talk about the details next week.



Simultaneous Interpretation

Meeting Minutes

- Meeting Time: [specific time]
- Meeting Place: [specific conference room location]
- Attendees: [list of attendees]
- Meeting Theme: [theme name]
- Meeting Content:
 1. Project Progress Report: The leaders of each team reported on the project progress in turn. Team 1 has completed [specific task 1], but encountered [problem 1] in [specific part]. It is expected to be solved by [solution time]. Team 2...
 2. Discussion Items: Regarding [problem 1], the participants discussed and proposed [solution 1], [solution 2], etc. After weighing, it was decided to adopt [final solution], and [person] will be



Face-to-Face Translation

I am very glad that we can reach cooperation in this meeting. I hope we can cooperate for win-win results.



很高兴这次会面我们能达成合作，希望我们合作共赢。

Image: A collage showing scenarios for Live Recording, Simultaneous Interpretation, and Face-to-Face Translation with the earbuds.

How to Connect the AI Earbuds to the "NebulaBuds"?

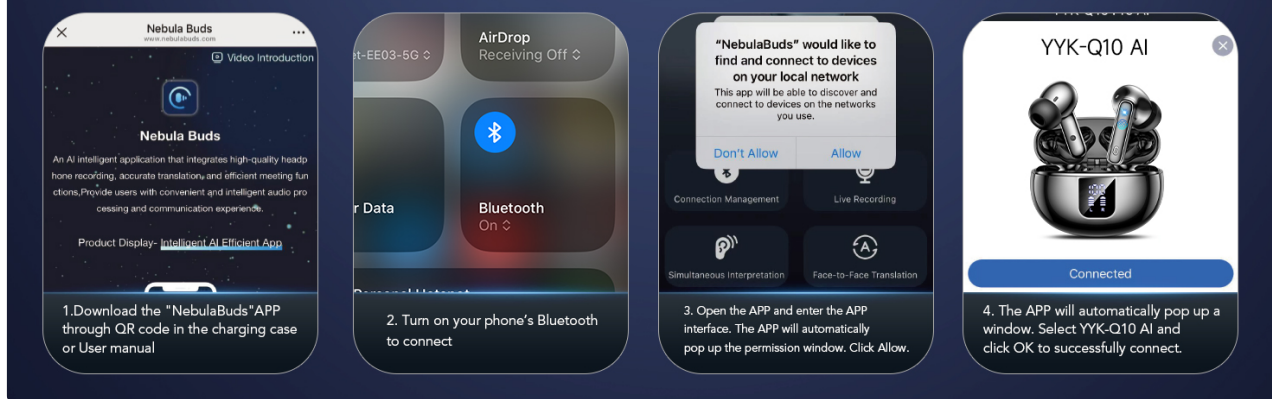


Image: Screenshots of the app interface demonstrating Simultaneous Interpretation, including language selection and microphone access prompts.

5.2.6 Live Recording

Convert spoken content to text for meeting notes or transcription. The app allows you to record and then transcribe the audio into text, which can be summarized or played back.

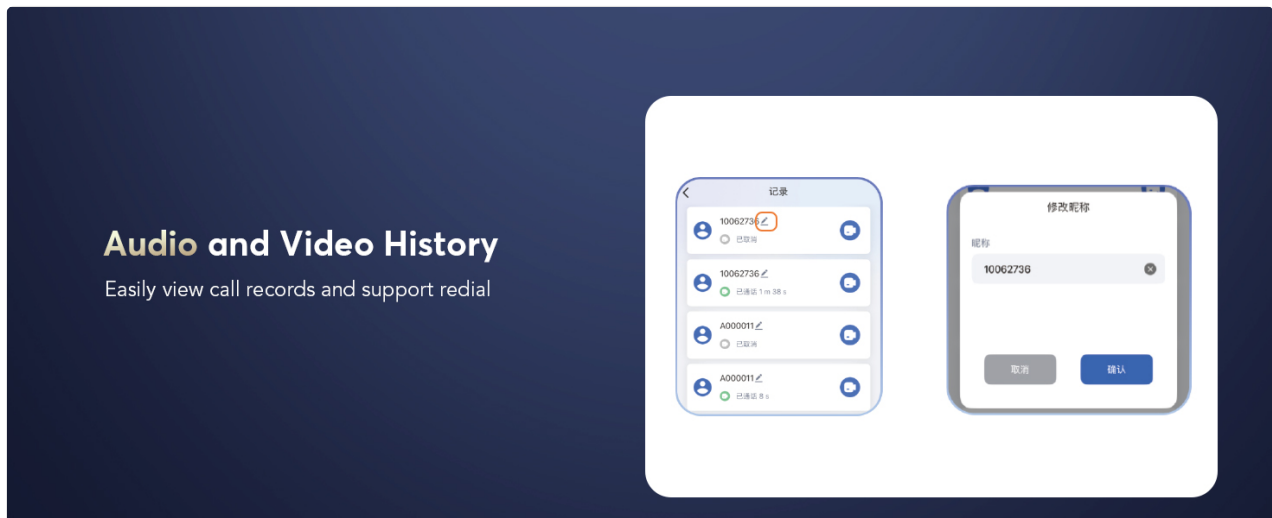


Image: Screenshots of the app interface for Live Recording, showing the recording function and language selection.

5.2.7 Face-to-Face Translation (Earphones + Mobile Phone)

Enables two-way translation with voice for global negotiations or travel. One person speaks into the earbud, and the translation appears on the phone screen and is spoken aloud, or vice versa.

AI Voice Smart Dialogue

Use real-time voice interaction to ask **Nebula** questions

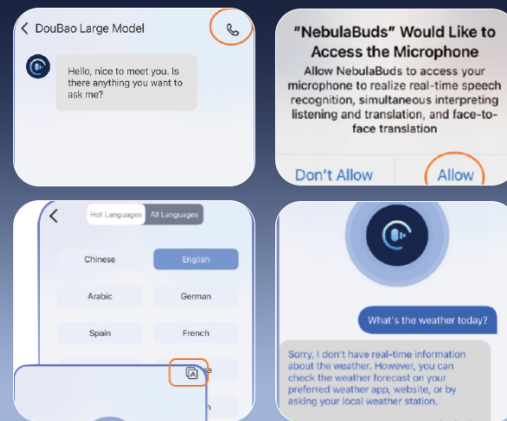


Image: Screenshots of the app interface for Face-to-Face Translation, showing language swapping and conversation flow.

5.2.8 Face-to-Face Translation (Dual-Ear Mode)

Share earbuds with another person, allowing both to speak and hear translations simultaneously for seamless conversation.

AI Chat

Ask **Nebula** questions via text



Image: Screenshots of the app interface for Dual-Ear Mode, illustrating how two users can share earbuds for simultaneous translation.

5.2.9 Audio and Video Call Translation

Conduct online calls with real-time translation. No app is needed for the other party, enabling effortless communication across language barriers.

Advanced Bluetooth 5.4 technology

Bluetooth 5.4 technology delivers a more stable and faster wireless connection to your device.



Image: A phone screen showing an ongoing video call with real-time translation displayed on the interface.

5.3 Noise Control Modes (ANC/Transparency)

The earbuds offer three versatile modes to adapt to different environments:

- **Active Noise Cancellation (ANC):** Blocks out distractions, immersing you in rich, undisturbed sound. Ideal for noisy environments.
- **Normal Mode:** Standard audio experience without active noise cancellation or transparency.
- **Transparency Mode:** Allows you to stay aware of your surroundings without removing the earbuds, balancing ambient sounds for safety and seamless interaction.

Switch between modes by pressing and holding the left MFB button for 2 seconds.

ANC+ENC Noise Cancellation

Dual noise reduction technology effectively blocks 99.55% of external noise, creating a quiet space for enjoying music and making calls as clear as face-to-face conversations.



48dB ↓



**Deep noise reduction,
exclusive quietness**



Active Noise
Cancellation



Normal
mode



Transparency
mode

Image: Diagram illustrating ANC+ENC Noise Cancellation, showing a 48dB noise reduction and icons for Active Noise Cancellation, Normal mode, and Transparency mode.



Free Speech Mode

Free speech mode for in-depth one-on-one conversations. Each person wears an earbud and talks as normal without touching, for hassle-free communication

Image: A visual showing the seamless switching between Active Noise Cancellation, Normal mode, and Transparency mode on the earbuds.

6. MAINTENANCE

6.1 Cleaning

- Wipe the earbuds and charging case with a soft, dry, lint-free cloth.
- Do not use abrasive cleaners, alcohol, or chemical solvents.
- Gently clean the charging contacts on the earbuds and inside the case with a dry cotton swab if needed.

6.2 Storage

- Store the earbuds in their charging case when not in use to protect them and keep them charged.
- Store in a cool, dry place away from direct sunlight and extreme temperatures.

7. TROUBLESHOOTING

Problem	Possible Cause	Solution
Earbuds not pairing	Low battery; Bluetooth off; Earbuds not in pairing mode; Device too far.	Charge earbuds/case; Turn on Bluetooth; Open case to enter pairing mode; Move closer to device.
No sound from earbuds	Volume too low; Not connected; Earbuds dirty.	Increase device volume; Reconnect earbuds; Clean earbud mesh/contacts.
Translation not working	App not connected; Incorrect language selected; Microphone permission denied; No internet (for online modes).	Ensure app is connected; Verify language settings; Grant microphone access in phone settings; Check internet connection.

Problem	Possible Cause	Solution
Poor call quality	Weak signal; Background noise; Microphone obstructed.	Move closer to device; Activate ANC; Ensure microphone is clear.
Earbuds not charging	Cable/adaptor faulty; Contacts dirty; Earbuds not seated correctly.	Try different cable/adaptor; Clean charging contacts; Reseat earbuds firmly in case.

8. SPECIFICATIONS

Feature	Detail
Model Name	Q10 AI
Wireless Communication Technology	Bluetooth 5.4
Bluetooth Range	Up to 15 meters
Battery Life (Earbuds)	6-7 hours (single charge)
Total Playtime (with Charging Case)	Up to 36 hours
Charging Time	Approx. 1 hour (earbuds and case)
Noise Control	Active Noise Cancellation (ANC)
Microphone	4 ANC Microphones
Material	Acrylonitrile Butadiene Styrene (ABS)
Control Type	Touch Control
Water Resistance Level	Waterproof
Supported Languages	144 languages and accents (via app)
Compatibility	iOS & Android devices (Bluetooth enabled)

9. WARRANTY AND SUPPORT

EUQQ products are manufactured to high-quality standards. For warranty information, technical support, or customer service inquiries, please refer to the contact details provided on the product packaging or the official EUQQ website. Keep your purchase receipt as proof of purchase for warranty claims.

