

[Manuals.plus](#) /

› [Dsoon](#) /

› Dsoon TL3000 4K Time Lapse Camera Instruction Manual

Dsoon TL3000

Dsoon TL3000 4K Time Lapse Camera Instruction Manual

MODEL: TL3000

1. Introduction

The Dsoon TL3000 is a versatile 4K FHD time lapse camera designed for capturing long-term events both indoors and outdoors. With its robust IP66 waterproof rating, extended battery life, and multiple shooting modes, it is ideal for documenting construction projects, monitoring plant growth, observing weather changes, or creating unique stop-motion videos.



Image: The Dsoon TL3000 camera showcasing its key features and suitability for outdoor observation.

2. What's in the Box

Your Dsoon TL3000 package includes the following items:

- Dsoon TL3000 4K Time Lapse Camera
- 64GB Memory Card
- User Manual
- Waterproof Cover
- Multi-Functional Mounting Bracket (includes Sucker Bracket, Circular Tube Bracket, Nail Bracket)
- USB Cable



Image: All components included in the Dsoon TL3000 Time Lapse Camera package.

3. Product Overview

The Dsoon TL3000 features a compact design with a rotatable IPS display for easy viewing and setup. The front includes the lens, fill light, and microphone. The side panels house the USB-C port and memory card slot, protected by a waterproof casing.



Image: Front view of the Dsoon TL3000 Time Lapse Camera.

4. Setup

4.1 Battery Installation

The TL3000 requires 12 AA batteries (not included) for operation. Open the camera's back cover and insert the batteries into the designated slots, ensuring correct polarity. The camera is designed for an extra-long standby time of up to 180 days with a 5-minute capture interval.

4.2 SD Card Insertion

Insert the included 64GB Micro SD card into the card slot located on the side of the camera. Ensure it is inserted correctly until it clicks into place.

4.3 Mounting the Camera

The camera comes with various mounting options to suit different environments:

- **Sucker Bracket:** For smooth surfaces like glass.
- **Circular Tube Bracket:** For attaching to poles or pipes.

- **Nail Bracket:** For securing to wooden surfaces or walls.

Attach the desired bracket to the camera's base and secure it to your chosen location. The camera's design allows for flexible positioning.



Image: The Dsoon TL3000 camera demonstrating its versatile mounting capabilities.

5. Operating Modes

The Dsoon TL3000 offers several modes to capture your desired time-lapse sequences:

- **Time-lapse Photo:** Captures a series of still images at set intervals, which can then be compiled into a video.
- **Time-lapse Video:** Records short video clips at user-defined intervals, creating a continuous time-lapse video.
- **Timing Photo:** Takes individual photos at specific scheduled times.
- **Timing Video:** Records individual video clips at specific scheduled times.
- **Macro Focus:** Allows for close-up shots of subjects.
- **Landscape:** Optimized for wide-angle outdoor scenes.

To set up time-lapse photography mode, navigate through the camera's menu using the control buttons. You can adjust settings such as frame rate, timing interval, photo resolution (up to 32MP), and video resolution (up to 4K UHD).

Video: A guide on how to set up the Dsoon TL3000 Time-Lapse Camera for photography mode.

Video: Demonstration of the Dsoon 4K FHD Time Lapse Camera in action for recording construction.



Image: Time-lapse footage showing progress at a construction site.

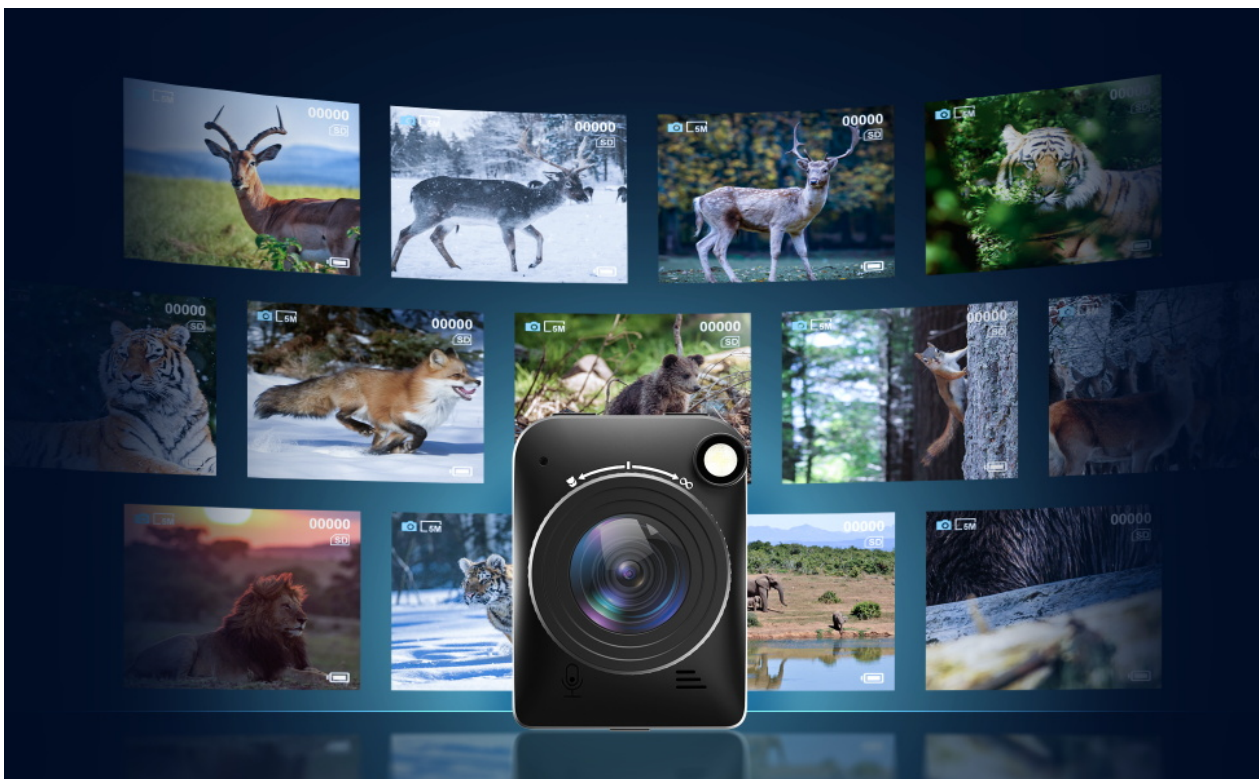


Image: Time-lapse footage illustrating plant growth over time.

6. Key Features

- **High-Definition 4K Imaging:** Captures crystal-clear images and videos with advanced chip and fill light technology, even in low-light conditions.
- **Extended Battery Life:** Enjoy up to 180 days of standby time with a 5-minute capture interval, minimizing the need for frequent recharging.
- **Effortless Setup:** Simple operation allows continuous cycling through shots until the SD card is full, providing a seamless solution for extended time-lapse photography.
- **Versatile Shooting Modes:** Supports timed shooting, video time-lapse, photo time-lapse, manual macro focus, and landscape modes for diverse applications.
- **Professional-Grade Durability:** Engineered with IP66 protection and housed in a waterproof casing, making it suitable for both indoor and outdoor use in various weather conditions.

180 Days Extra Standby 3000mAh Battery

Longer standby working time, don't worry about insufficient battery affecting shooting.



Image: The Dsoon TL3000 camera emphasizing its 180-day battery life.

Time-Lapse Camera Recording



Image: The Dsoon TL3000 camera in its waterproof housing, ready for outdoor use.

7. Specifications

Feature	Specification
Brand	Dsoon
Model Name	TL3000
Video Capture Resolution	4K
Effective Still Resolution	32 MP
Water Resistance Level	Waterproof (IP66)
Battery Average Life	4320 Hours (approx. 180 days)
Screen Size	2 Inches
Focus Type	Manual Focus
Lens Type	Wide Angle
Flash Memory Type	Micro SD (64GB included)
Operating Temperature	Up to 50°C (122°F)
Item Weight	0.67 Kilograms

8. Maintenance

- **Cleaning:** Use a soft, dry cloth to clean the camera body and lens. For stubborn dirt, a slightly damp cloth can be used, ensuring no moisture enters the ports.
- **Battery Care:** Replace all 12 AA batteries simultaneously to ensure optimal performance. Remove batteries if the camera will not be used for an extended period.
- **SD Card Management:** Regularly back up your footage and format the SD card to maintain performance and prevent data corruption.
- **Storage:** Store the camera in a cool, dry place away from direct sunlight and extreme temperatures when not in use.
- **Waterproof Housing:** Always ensure the waterproof housing is properly sealed before outdoor use, especially in wet conditions.

9. Troubleshooting

- **Camera Not Turning On:** Check if batteries are inserted correctly and fully charged. Ensure all 12 AA batteries are present.
- **Poor Image/Video Quality:** Verify the lens is clean and free from obstructions. Ensure the manual focus is correctly adjusted for your subject distance. Check resolution settings in the menu.
- **SD Card Error:** Ensure the SD card is properly inserted. Try formatting the SD card (this will erase all data, so back up first). If the issue persists, try a different compatible SD card.
- **Short Battery Life:** Ensure you are using fresh, high-quality AA batteries. The 180-day life is based on specific settings (e.g., 5-minute interval); more frequent captures or use of the fill light will reduce battery life.
- **Water Leakage:** Immediately cease use and inspect the waterproof housing for any damage or improper sealing. Ensure all latches are securely fastened.

10. Warranty and Support

Dsoon offers a 1-year warranty for free device replacement in case of usage issues. For any questions or support, please contact Dsoon customer service at Dsoonservice@hotmail.com.
