



[Manuals.plus](#) /

> [VIVOHOME](#) /

> VIVOHOME AutoFlow Bathroom Exhaust Fan with Humidity Sensor (Model VH1797) Instruction Manual

VIVOHOME VH1797

VIVOHOME AutoFlow Bathroom Exhaust Fan with Humidity Sensor (Model VH1797)

Instruction Manual

[Safety Information](#) [Package Contents](#) [Setup & Installation](#) [Operating](#)
[Instructions](#) [Maintenance](#) [Troubleshooting](#) [Specifications](#) [Warranty & Support](#)

INTRODUCTION

This manual provides detailed instructions for the installation, operation, and maintenance of your VIVOHOME AutoFlow Bathroom Exhaust Fan with Humidity Sensor, Model VH1797. This fan features an energy-saving EC motor, constant airflow technology, and a humidity sensor for efficient ventilation in bathrooms, laundry rooms, and other suitable indoor spaces.

SAFETY INFORMATION

Please read and understand all instructions before beginning installation. Failure to follow these instructions may result in electric shock, fire, property damage, or personal injury.

- Always disconnect power at the service panel before wiring or servicing the fan.
- All wiring must be performed by a qualified electrician in accordance with all applicable electrical codes and standards.
- Wear safety glasses and gloves during installation.
- Ensure the fan is properly grounded. The fan is designed with a grounded-free connection and dual insulation for safety.
- Do not install this fan in a cooking area.
- This fan is intended for general ventilating use only. Do not use to exhaust hazardous or explosive materials and vapors.

PACKAGE CONTENTS

Verify that all components are present and undamaged before proceeding with installation.

- VIVOHOME AutoFlow Bathroom Exhaust Fan Housing
- Fan Motor Assembly
- Grille/Cover with LED Light
- Duct Connector (4-inch)
- Installation Brackets/Rails
- Mounting Hardware (screws, wire nuts)
- Cutout Template
- User Manual
- Remote Control (batteries not included)



Figure 1: Full Accessory Kit. The image displays the VIVOHOME AutoFlow Bathroom Exhaust Fan components, including the fan housing, grille, duct hose, clamps, and mounting hardware.

SETUP & INSTALLATION

The VIVOHOME AutoFlow Bathroom Exhaust Fan is designed for easy installation, fitting standard 10.2 x 10.2 inch ceiling openings. It includes a flexible mounting frame and a cutout template for accurate placement.

Installation Steps

1. **Prepare the Ceiling Opening:** Use the provided cutout template to mark and cut a 10.2 x 10.2 inch opening in the ceiling. For replacement, the fan fits existing 10-10.4 inch cutouts.
2. **Mount the Housing:** Expand the four brackets on the fan housing to secure it to the ceiling joists. Ensure the mounting clips are fully secured. Multiple screw holes are available for various setups.
3. **Wiring:** Loosen the short screw and remove the wire cover. Pull house wires (120V AC) through the knockout hole. Use quick connectors to join the house wiring (from the wall switch) to the fan wires (neutral, fan, light, ground). Carefully tuck connected wires back into the wiring compartment and reattach the wire cover.
4. **Connect Ducting:** Connect a 4-inch circular duct (not included) to the duct connector. Seal the joint with a clamp (optional) or duct tape (not included) for an airtight connection. Insert the duct connector back into the fan housing.
5. **Install Motor Assembly:** Lift out the motor assembly from the housing (if not already removed). Reinstall it, securing with the screws. Plug the motor assembly into the power unit.
6. **Attach Grille:** Squeeze the springs on the grille together and insert them into the housing slots. Connect the LED panel interface plug. Press the spring clips and snap the panel into the slot to finish installation.

Simple 4-Step Installation

• Includes Cutout Template

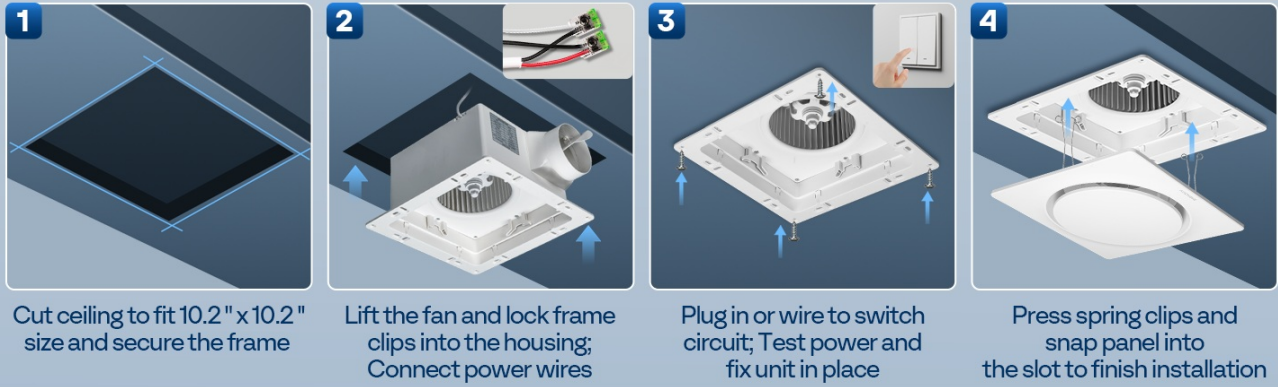


Figure 2: Simple 4-Step Installation. This graphic illustrates the four main steps for installing the fan: cutting the ceiling, lifting and locking the frame clips, wiring and fixing the unit, and attaching the panel.

Flexible Mounting Frame

Pre-drilled with multiple screw holes to fit various structures and screw types

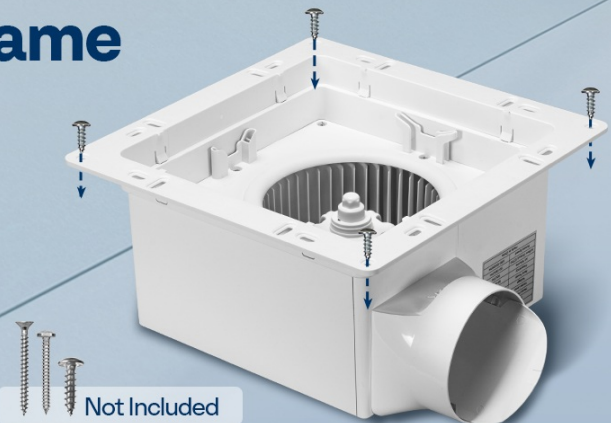


Figure 3: Flexible Mounting Frame. The image shows the pre-drilled multiple screw holes and mounting clips for secure installation in various ceiling structures.

Installation Videos

Your browser does not support the video tag.

Video 1: How to Install Bathroom Fan Light No Need to Enter the Attic. This video provides a step-by-step guide on installing a bathroom fan, demonstrating techniques that avoid attic access.

Your browser does not support the video tag.

Video 2: Bathroom Exhaust Fan with Light, UL Listed Installation. This video demonstrates the installation process for a UL-listed bathroom exhaust fan with an integrated light.

Your browser does not support the video tag.

Video 3: How to Install Visper Fan. A visual guide to installing a Visper brand fan, showcasing key steps and considerations.

Your browser does not support the video tag.

Video 4: JOEAONZ Bathroom Exhaust Fan D4 Instruction. This video provides specific installation instructions for the JOEAONZ D4 Bathroom Exhaust Fan model.

Your browser does not support the video tag.

Video 5: JOEAONZ Bathroom Exhaust Fan H2 Instruction. A detailed instructional video for installing the JOEAONZ H2

OPERATING INSTRUCTIONS

The VIVOHOME AutoFlow fan features intelligent airflow control and a humidity sensor to optimize ventilation.

Humidity Sensor & AutoFlow Design

The fan automatically adjusts its speed based on detected humidity levels:

- **Quiet Mode (30 CFM):** Operates when humidity is below 50%.
- **Normal Mode (110 CFM):** Activates when humidity is between 50% and 80%.
- **Turbo Mode (160 CFM):** Engages when humidity is 80% or higher to rapidly clear steam and odors.

This constant airflow technology ensures stable and reliable ventilation even against duct bends or dust buildup.



Figure 4: Auto Humidity Sensing. The fan automatically adjusts its speed based on real-time humidity, transitioning from 110 CFM (start bathing) to 160 CFM (bathing in progress) and back to 30 CFM (post-bath/before sleep).

Remote Control

The fan can also be controlled manually via the included remote control, offering multiple speed settings beyond the automatic humidity-based modes.

Intelligent Airflow Control



Figure 5: Intelligent Airflow Control. This image shows the remote control with options for auto mode and 6 manual speed levels (F1-F6), corresponding to different CFM values and humidity ranges.

MAINTENANCE

Regular cleaning and maintenance will ensure optimal performance and longevity of your exhaust fan.

Cleaning the Grille and Fan Blades

1. **Disconnect Power:** Always turn off power at the circuit breaker before cleaning.
2. **Remove Grille:** Gently pull down the grille to release the spring clips. Disconnect the LED panel interface plug.
3. **Clean Grille:** Wash the grille with mild soap and water. Rinse thoroughly and dry completely before reinstallation.
4. **Clean Fan Blades:** Use a soft cloth or brush to remove dust and debris from the fan blades and interior of the housing. Do not use abrasive cleaners or solvents.
5. **Reinstall:** Reconnect the LED panel plug, squeeze the spring clips, and push the grille back into place until it snaps securely. Restore power.

TROUBLESHOOTING

If you experience issues with your VIVOHOME AutoFlow Bathroom Exhaust Fan, refer to the following common problems and solutions:

Problem	Possible Cause	Solution
Fan does not turn on	No power to the fan; Loose wiring connection; Faulty switch or remote.	Check circuit breaker; Verify wiring connections; Test switch/remote or replace if necessary.
Fan is noisy	Loose mounting screws; Obstruction in fan blades; Dirty fan blades; Improper ducting.	Tighten mounting screws; Remove any obstructions; Clean fan blades; Check ducting for kinks or blockages.
Poor ventilation	Blocked ducting; Incorrect fan speed setting; Humidity sensor malfunction.	Check ducting for obstructions; Adjust fan speed via remote; Ensure humidity sensor is clean and unobstructed.
Light does not work	Loose wiring connection; Faulty LED panel.	Check light wiring connection; Contact support for LED panel replacement if faulty.

SPECIFICATIONS

Feature	Detail
Brand	VIVOHOME
Model Number	VH1797
Air Flow Capacity	30-110-160 Cubic Feet Per Minute (CFM)
Motor Type	Brushless EC Motor
Power Source	AC/DC
Voltage	120 Volts
Wattage	45 watts
Noise Level	0.1 - 1.5 Sones
Number of Speeds	3 (Auto) / 6 (Manual via Remote)
Mounting Type	Ceiling Mount
Product Dimensions	30D x 30W x 14.5H Centimetres (Housing: 8.9 x 8.9 x 5.7 inches)
Ceiling Opening	Standard 10.2 x 10.2 inches (fits existing 10-10.4 inches)
Item Weight	1.9 Kilograms
Material Type	Acrylonitrile Butadiene Styrene, Polypropylene
Special Features	Humidity Sensor, Constant Airflow, Low Noise, Energy-Saving

WARRANTY & SUPPORT

This VIVOHOME product comes with a **1-year warranty** from the date of purchase.

For technical support, warranty claims, or any questions regarding your product, please contact VIVOHOME customer service. Refer to your purchase documentation or the VIVOHOME website for the most current contact information.