

[Manuals.plus](#) /

> [SSK](#) /

> SSK SD501 1TB Portable SSD External Hard Drive User Manual

SSK SD501

SSK SD501 1TB Portable SSD External Hard Drive User Manual

Model: SD501 | Brand: SSK

1. INTRODUCTION

Thank you for choosing the SSK SD501 Portable SSD External Hard Drive. This device offers high-speed data transfer and reliable storage for various compatible devices. This manual provides essential information for setting up, operating, and maintaining your SSD.

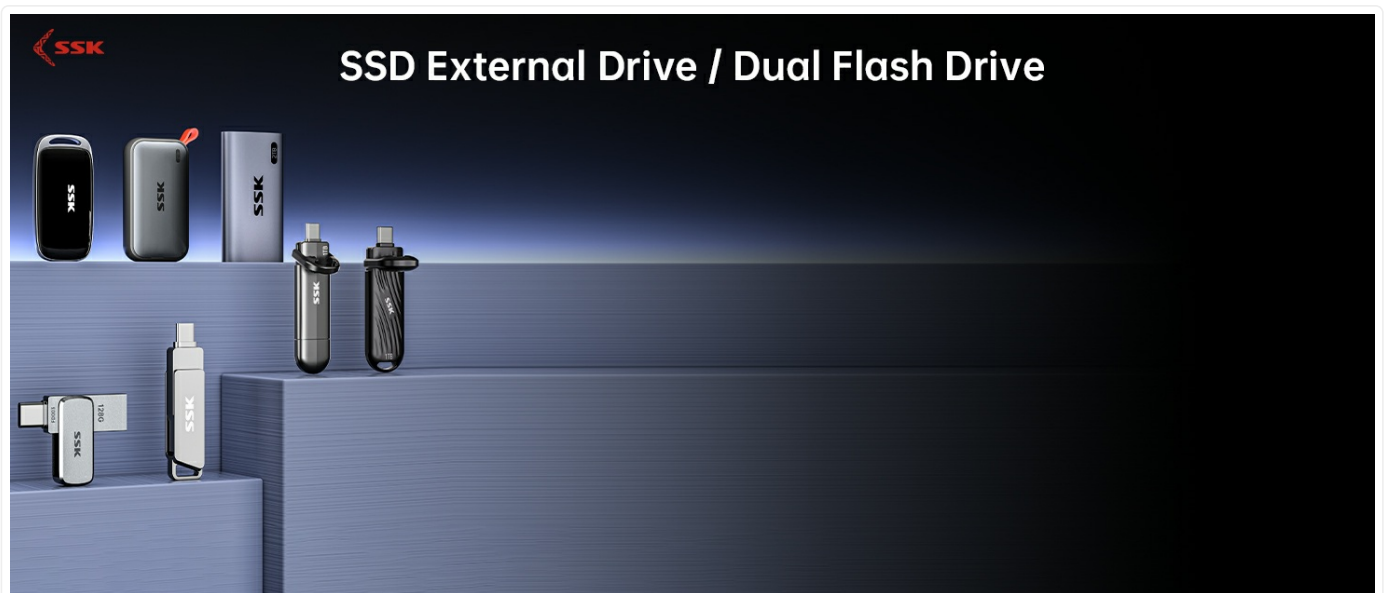


Image: A graphic displaying the SSK SD501 Portable SSD's speed test results, indicating read speeds up to 2000 MB/s and write speeds up to 1800 MB/s on a USB 3.2 Gen2x2 port.

2. PACKAGE CONTENTS

Please verify that all items are present in your package:

- SSK SD501 Portable SSD External Hard Drive (1TB)
- 20Gbps USB-C to USB-C Cable
- 10Gbps USB-A to USB-C Cable

Portable External Solid State Drive

20Gbps **USB-C** cable and 10Gbps **USB-A** Cable included



USB-A TO USB-C



USB-C TO USB-C

Basic info	Performance
Protocol: USB、PCIe/NVME	Mac Capacity: Full 1 TB
TRIM Support: YES	Win Capacity: 931.39 GB (Binary)
S.M.A.R.T Support: YES	CDM Test Speed: 2050MB/s
LED Indicator: Blue Light	Large File Transfer: 1-1.2GB/S
Interface: USB3.2 GEN2X2	Transfer Technology: SLC Cache
10Gbps USB-A Cable 0.2M	Material: Thick Metal+Plastic
20Gbps USB-C Cable 0.2M	Endurance: 600TBW

Image: The SSK SD501 Portable SSD shown alongside its two included cables: a USB-A to USB-C cable and a USB-C to USB-C cable.

3. SETUP

The SSK SD501 is designed for plug-and-play functionality. No driver installation is typically required for most operating systems.

3.1 Connecting the SSD

1. Select the appropriate cable for your device:
 - Use the **20Gbps USB-C to USB-C cable** for devices with a USB 3.2 Gen2x2 port to achieve maximum transfer speeds.
 - Use the **10Gbps USB-A to USB-C cable** for devices with a standard USB-A port or for backward compatibility.
2. Connect the USB-C end of the chosen cable to the SSK SD501 SSD.
3. Connect the other end of the cable to the corresponding port on your computer, smartphone, tablet, or gaming console.
4. The blue LED indicator on the SSD will illuminate upon successful connection and blink during data transfers.



Efficient File Management

20Gbps USB3.2 GEN2X2

Edit 4K Footage Directly from Drive & Streamline Workflows with Zero Compromise. Ensure your device support USB3.2 GEN2X2 to achieve the Max 20Gbps.

*To prevent damage, always perform a Secure Eject operation before unplugging the SSD.

Image: The SSK SD501 Portable SSD connected to a laptop, demonstrating its use for efficient file management.

3.2 Initial Recognition

Upon first connection, your operating system should automatically recognize the SSD. It may appear as a new drive or external storage device. If prompted, follow the on-screen instructions to access the drive.

For optimal performance, ensure your device supports USB 3.2 Gen2x2. Other ports, including Thunderbolt, may cap speeds at 10Gbps.

4. OPERATING INSTRUCTIONS

4.1 General File Transfer (PC/Mac)

To transfer files between your computer and the SSK SD501 SSD:

1. Connect the SSD to your computer as described in Section 3.1.
2. Open your computer's file explorer (Windows) or Finder (Mac).
3. Locate the SSK SD501 drive, typically listed under "This PC" or "Devices and drives".
4. Drag and drop files or folders to and from the SSD as you would with any other storage device.
5. Always perform a "Safe Eject" or "Safely Remove Hardware" operation before unplugging the SSD to prevent data corruption.



Image: The SSK SD501 Portable SSD demonstrating universal compatibility with phones, computers, game consoles, and tablets for file sharing.

4.2 Using with iPhone (OTG Functionality)

The SSK SD501 supports On-The-Go (OTG) functionality for direct file management with compatible iPhones (e.g., iPhone 15/16 Pro models).

4.2.1 Transferring Photos/Videos from iPhone to SSD

1. Connect the SSD to your iPhone using the USB-C to USB-C cable.
2. Open the **Photos** app on your iPhone.
3. Select the photos or videos you wish to transfer.
4. Tap the **Share** icon.
5. Select **Save to Files**.
6. Browse to locate the SSK SSD (it will appear as a drive in the Files app).
7. Tap **Save** to initiate the transfer.



Image: Visual guide showing five steps to transfer photos and videos from an iPhone to the SSK SSD using the Files app.

4.2.2 Recording ProRes 4K HDR Video Directly to SSD (iPhone)

For iPhones supporting ProRes video recording, you can record directly to the SSK SD501 SSD.

1. Connect the SSD to your iPhone using the USB-C to USB-C cable.
2. Go to **Settings > Camera > Formats**.
3. Enable **Apple ProRes**.
4. Open the **Camera** app.
5. Ensure **ProRes** is selected in the camera interface and begin recording. Videos will be saved directly to the SSD.



 For iPhone ProRes 4KHDR

Plug-and-Play OTG

3.75W Low Power portable SSD enabling ProRes Recording for iPhone

1. Open "Setting"  > Camera > Format, Turn on "Apple ProRes"
2. Open "Camera" APP , Turn on "ProRes" and start recording

Image: The SSK SD501 Portable SSD connected to an iPhone mounted on a gimbal, illustrating direct ProRes 4K HDR video recording.



Image: Visual guide showing five steps to enable Apple ProRes recording and save videos directly to the SSK SSD from an iPhone.

4.3 Using with Android Devices (OTG Functionality)

For Android phones and tablets that support OTG (On-The-Go) functionality, you can directly backup photos and files.

1. Connect the SSD to your Android device using the appropriate USB cable.
2. Open your device's file manager or gallery app.
3. Select the items you wish to backup.
4. Choose the "Copy" or "Move" option.
5. Navigate to the SSK SD501 drive (it will appear as an external storage device).
6. Paste the selected items into the desired folder on the SSD.

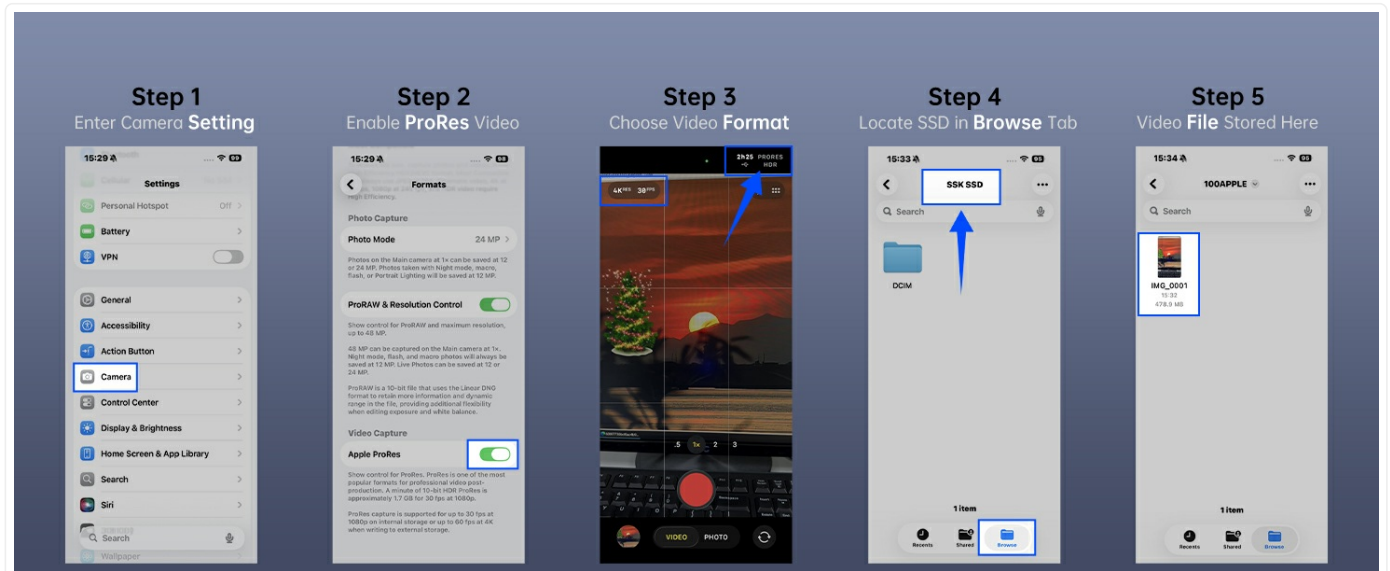


Image: Visual guide showing two steps to backup photos and files from an Android phone or tablet to the external SSK SSD.

5. DATA SECURITY AND PERFORMANCE FEATURES

The SSK SD501 incorporates several features to ensure data integrity and optimal performance:

- **S.M.A.R.T. Health Diagnostics:** Monitors the drive's health and provides early warnings of potential issues.
- **Adaptive TRIM:** Optimizes data block management to maintain peak write speeds and extend the SSD's lifespan.
- **UASP (USB Attached SCSI Protocol):** Enhances data transfer speeds, offering up to 20% faster performance compared to traditional USB Mass Storage Bulk-Only Transport (BOT).
- **Optimized Enclosure for Heat Dissipation:** The triple-shielded design helps manage heat, ensuring core-level data integrity. Note that adaptive thermal balancing may temporarily lower speeds at high temperatures to protect the SSD.
- **Blue LED Indicator:** Displays real-time activity during data transfers, helping to prevent accidental disconnections and potential data loss.

Triple-Shielded Data Security

Heat Dissipation via Optimized Enclosure Ensures Core-Level Data Integrity

*Adaptive Thermal Balancing can lower the speed at high temperature to protect SSD



UASP

20% Faster

S.M.A.R.T

SSD Safety Reminder

TRIM

SSD Optimization

Image: An exploded view of the SSK SD501 SSD highlighting its internal components and triple-shielded design for heat dissipation and data security, including UASP, S.M.A.R.T., and TRIM support.

6. SPECIFICATIONS

Feature	Detail
Model Number	SD501
Digital Storage Capacity	1 TB
Hard Disk Interface	Solid State
Connectivity Technology	USB 3.2 Gen2x2
Read Speed	Up to 2000 MB/s
Write Speed	Up to 1800 MB/s

Feature	Detail
Compatible Devices	Camera, Gaming Console, Laptop, Smartphone, Tablet
Hardware Platform	Windows, Mac, Android, iOS, PC, Linux
Special Features	LED Light, Portable, S.M.A.R.T. Technology, TRIM Support
Enclosure Material	Plastic, Zinc Alloy
Color	Black
Item Weight	60 Grams
Dimensions (L x W x Thickness)	2.93" x 1.46" x 0.42"

Lightweight & Portable

Access working documents and store treasured travel memories On The Go

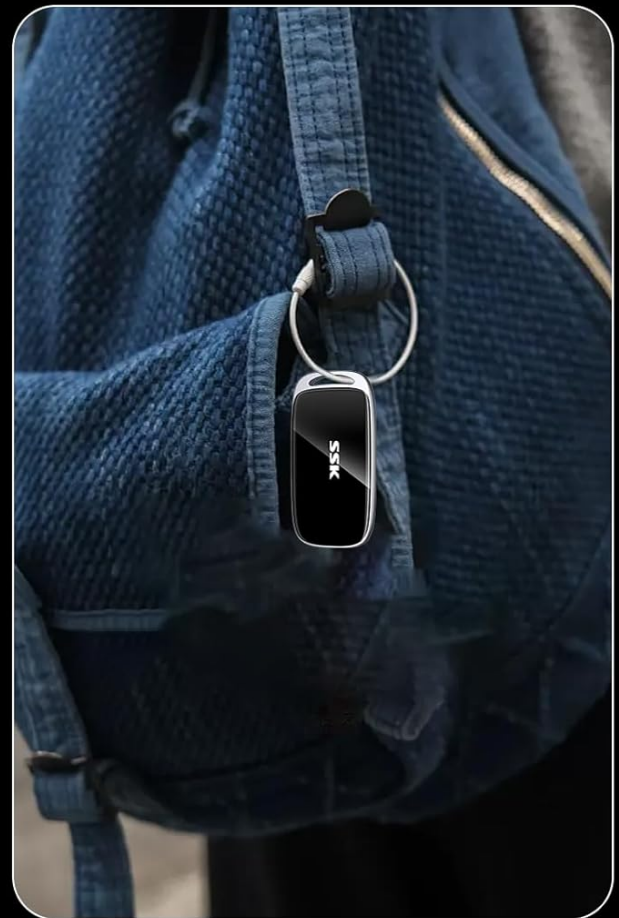


Image: The SSK SD501 Portable SSD displaying its compact dimensions (2.93" x 1.46" x 0.42") and an example of its portability when attached to a bag.

7. MAINTENANCE

- **Safe Ejection:** Always safely eject the SSD from your device before disconnecting it to prevent data corruption.
- **Physical Care:** Keep the SSD in a clean, dry environment. Avoid extreme temperatures, direct sunlight, and strong magnetic fields.
- **Firmware Updates:** Periodically check the SSK official website for any available firmware updates for your model to ensure optimal performance and compatibility.
- **Data Backup:** While SSDs are reliable, it is always recommended to maintain backups of critical data on multiple storage devices.

8. TROUBLESHOOTING

Problem	Possible Solution
SSD not recognized by device.	<ul style="list-style-type: none"> ◦ Ensure the cable is securely connected to both the SSD and the device. ◦ Try a different USB port on your device. ◦ Try a different USB cable. ◦ Restart your computer or device. ◦ Check your device's Disk Management (Windows) or Disk Utility (Mac) to see if the drive is detected but uninitialized or unformatted.
Slow transfer speeds.	<ul style="list-style-type: none"> ◦ Ensure your device's USB port supports USB 3.2 Gen2x2 for maximum speeds. Older USB standards (e.g., USB 2.0, USB 3.0/3.1 Gen1) will result in lower speeds. ◦ Verify you are using the 20Gbps USB-C to USB-C cable for optimal performance. ◦ Close other applications that might be using system resources or performing disk operations. ◦ Large numbers of small files transfer slower than a few large files.
SSD gets warm during use.	It is normal for the SSD to become warm during intensive data transfers due to its high-speed operation. The optimized enclosure and adaptive thermal balancing are designed to manage heat. If it becomes excessively hot and performance drops significantly, ensure it has adequate ventilation and is not covered.
Data transfer interrupted.	<ul style="list-style-type: none"> ◦ Do not unplug the SSD while the blue LED indicator is blinking, as this indicates active data transfer. ◦ Ensure the cable connection is stable and not easily disturbed. ◦ Perform a "Safe Eject" before disconnecting.

9. WARRANTY AND SUPPORT

9.1 Warranty Information

The SSK SD501 Portable SSD comes with a **3-year warranty** from the date of purchase. This warranty covers manufacturing defects and malfunctions under normal use. It does not cover damage caused by misuse, accidents, unauthorized modifications, or natural disasters. Please retain your proof of purchase for warranty claims.

9.2 Customer Support

For technical assistance, warranty claims, or any questions regarding your SSK SD501 SSD, please contact SSK Customer Support through the official SSK website or your retailer's support channels.

Your browser does not support the video tag.

Video: An official product video from SSK showcasing the portable SSD drive and its high-speed capabilities up to 2000 MB/s. This video demonstrates the product's design and key features.



