

## DBPOWER Z07

# DBPOWER Z07 5000A Jump Starter User Manual

Model: Z07

Brand: DBPOWER

## 1. INTRODUCTION AND OVERVIEW

The DBPOWER Z07 5000A Jump Starter is a powerful and versatile portable device designed to provide reliable starting power for 12V vehicles with engines up to 10.0L Gas and 8.0L Diesel. Beyond its primary function, it serves as a robust 74Wh power bank for charging electronic devices and features a multi-mode 500LM LED emergency flashlight. Engineered with advanced safety protections and built to withstand harsh environmental conditions, the Z07 is an essential tool for roadside emergencies, outdoor adventures, and general vehicle maintenance.



Image: The DBPOWER Z07 Jump Starter unit, smart jumper cables, and a compact carrying case. The jump starter is black and yellow with a digital display showing "100% IN OUT".

## 2. WHAT'S IN THE BOX

---

Upon opening your DBPOWER Z07 Jump Starter package, you will find the following components:

- **Z07 Car Battery Jump Starter** x1: The main unit for jump-starting vehicles and charging devices.
- **Smart Jumper Clamps** x1: Intelligent clamps with built-in safety features for connecting to a vehicle battery.
- **USB to Type-C Charging Cable** x1: For recharging the jump starter unit.
- **Portable Storage Case** x1: A durable case for convenient storage and transport of the jump starter and accessories.
- **User Manual** x1: This instruction guide.

# WHAT'S IN THE BOX?

## Smart Jumper Clamps



**Z07 Jump Starter**



**User Manual**



**USB Charging Cable**



**Carrying Case**

Image: All items included in the package laid out: the Z07 Jump Starter, smart jumper clamps, USB charging cable, portable storage case, and user manual.

### 3. PRODUCT FEATURES AND COMPONENTS

---

Familiarize yourself with the key features and components of your DBPOWER Z07 Jump Starter:

### **Digital LED Display**

Shows the battery percentage of the jump starter and indicates "IN" when charging and "OUT" when discharging (charging other devices).

### **Power Button**

Used to turn the unit on/off and activate the LED display.

### **LED Light Switch**

Activates and cycles through the three LED flashlight modes.

### **USB Outputs (USB1: 5V/3A, USB2: 5V/2.1A)**

For charging mobile phones, tablets, and other USB-powered devices.

### **Type-C Input (5V/2A, 9V/2A)**

The port used to recharge the jump starter unit.

### **12V Jumping Port**

Where the smart jumper clamps connect to the unit for jump-starting a vehicle.



# DETAILS & VERSATILITY

LED Light Switch

Power Button

LED Light

USB1: 5V/3A  
9V/2A 12V/1.5A

Type-C Input:  
5V/2A 9V/2A

USB2:  
5V/2.1A

LED Display

12V Jumping Port

Image: Detailed view of the DBPOWER Z07 Jump Starter highlighting its various ports and buttons, including the LED display, power button, LED light switch, USB outputs, and Type-C input.

## LED Flashlight Modes:

The integrated 500LM LED flashlight offers three distinct modes for various situations:

- **Stable Light:** Provides continuous illumination for general use.

- **Strobe Light:** A flashing light for signaling or attracting attention in emergencies.
- **SOS Light:** Emits the international Morse code signal for distress (three short, three long, three short flashes).

# 500LM LED EMERGENCY LIGHT



STABLE



STROBE



SOS



## 3 Lighting Modes

STABLE

STROBE

SOS

Image: The DBPOWER Z07 Jump Starter with its LED light illuminated, illustrating the three lighting modes: Stable, Strobe, and SOS.

## 4. SETUP

---

Before first use, or if the unit has been stored for an extended period, ensure your DBPOWER Z07 Jump Starter is fully charged.

1. **Check Battery Level:** Press the Power Button to view the current battery percentage on the LED display.
2. **Charge the Unit:** Connect the provided USB to Type-C charging cable to the Type-C input port on the jump starter. Connect the other end to a USB wall adapter (not included) or a powered USB port. The display will show "IN" and the battery percentage will increase as it charges.
3. **Full Charge Indication:** The unit is fully charged when the LED display shows 100%. Disconnect the charging cable.

**Important: For optimal performance and battery longevity, it is recommended to fully charge the jump starter every 3-6 months, even when not in use.**

## 5. OPERATING INSTRUCTIONS

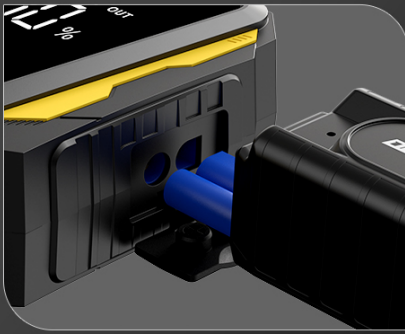
---

### 5.1. Jump Starting a Vehicle

Follow these steps carefully to safely jump-start your vehicle:

1. **Prepare the Vehicle:** Ensure the vehicle's ignition is OFF and all accessories (lights, radio, A/C) are turned off. Engage the parking brake.
  2. **Connect Jumper Clamps to Jump Starter:** Insert the blue plug of the smart jumper clamps firmly into the 12V Jumping Port on the jump starter unit. Ensure a secure connection.
  3. **Connect Clamps to Car Battery:**
    - Connect the **RED (+)** clamp to the positive terminal of the vehicle's battery.
    - Connect the **BLACK (-)** clamp to the negative terminal of the vehicle's battery.
- Warning: Do not touch the red and black clamps together once connected to the jump starter. Ensure correct polarity to avoid damage.**
4. **Check Indicator Light:** Once the clamps are correctly connected to the car battery, the indicator light on the smart jumper clamps will turn **GREEN**, indicating it's safe to proceed. If it's red or flashing, check connections and battery status.
  5. **Start the Vehicle:** Go into your vehicle and start the engine. If the vehicle does not start on the first attempt, wait at least 30 seconds before trying again. Do not crank for more than 3 seconds per attempt.
  6. **Disconnect Clamps:** Once the vehicle starts, immediately disconnect the **BLACK (-)** clamp from the car battery first, then disconnect the **RED (+)** clamp. Finally, remove the smart jumper clamps from the jump starter unit.

### 3 STEPS TO START YOUR VEHICLES



#### Step 1

Connect the jumper clamps



#### Step 2

The indicator light turns green



#### Step 3

Start the Vehicle

Image: A visual guide showing the three steps for jump-starting a vehicle: 1. Connect the jumper clamps to the unit, 2. Connect clamps to the car battery and wait for the green indicator light, 3. Start the vehicle.

## 5.2. Using as a Portable Power Bank

The DBPOWER Z07 can charge your electronic devices:

1. **Connect Device:** Use your device's USB charging cable to connect it to either the USB1 (5V/3A) or USB2 (5V/2.1A) output port on the jump starter.
2. **Begin Charging:** The jump starter will automatically begin charging your device. The LED display will show "OUT".
3. **Disconnect:** Disconnect your device once charging is complete.



# PORTABLE POWER BANK

74Wh large battery capacity,  
power up your digital devices



Image: The DBPOWER Z07 Jump Starter connected via USB to charge a laptop, tablet, and smartphone, demonstrating its function as a portable power bank.

## 5.3. Using the LED Flashlight

The built-in LED flashlight is useful for various situations, especially in low-light conditions:

1. **Turn On:** Press the LED Light Switch button once to turn on the Stable light mode.

2. **Cycle Modes:** Press the LED Light Switch button again to cycle to Strobe mode. Press it a third time for SOS mode.
3. **Turn Off:** Press the LED Light Switch button a fourth time to turn off the flashlight.

## 6. SAFETY AND PROTECTIONS

---

The DBPOWER Z07 Jump Starter is equipped with an upgraded intelligent jumper clamp system that provides 10 layers of protection to ensure safe operation for both the user and the vehicle:

- **Spark-proof Protection:** Prevents sparks during connection.
- **Reverse Polarity Protection:** Alerts and prevents operation if clamps are connected incorrectly.
- **Over-load Protection:** Protects against excessive current draw.
- **Low-temperature Protection:** Ensures safe operation in cold conditions.
- **High-temperature Protection:** Prevents overheating of the unit.
- **Zero Damage Protection:** Minimizes risk of damage to vehicle electronics.
- **Reverse Connection Protection:** Safeguards against incorrect cable connections.
- **Over Current Protection:** Limits current to safe levels.
- **Over Voltage Protection:** Protects against voltage surges.
- **Short-circuit Protection:** Prevents damage from short circuits.

# MULTIPLE SAFETY PROTECTIONS



Image: A graphic representation of the DBPOWER Z07 Jump Starter highlighting its 10 multiple safety protections with corresponding icons.

## Environmental Resistance:

The Z07 jump starter boasts an **IP65 protection rating**, making it dustproof and waterproof. It is designed to withstand extreme temperatures ranging from **-4°F to 140°F (-20°C to 60°C)**, ensuring reliable performance in various climates.



# IP65 & COLD RESISTANT

Withstand temperature from -4°F to 140°F.



**Dustproof**



**Waterproof**



**Shock resistant**



Image: The DBPOWER Z07 Jump Starter shown in various environmental conditions, emphasizing its IP65 rating for dustproof, waterproof, and shock-resistant capabilities, and its ability to operate in extreme cold and heat.

## 7. MAINTENANCE



Proper maintenance will extend the lifespan and ensure the reliability of your DBPOWER Z07 Jump Starter:

- **Regular Charging:** Recharge the unit fully every 3-6 months, even if not used, to maintain battery health.
- **Storage:** Store the jump starter in a cool, dry place, away from direct sunlight and extreme temperatures. Use the provided carrying case for protection.
- **Cleaning:** Wipe the unit with a soft, dry cloth. Do not use harsh chemicals or abrasive cleaners. Ensure all ports are free of dust and debris.
- **Cable Inspection:** Periodically inspect the smart jumper clamps and cables for any signs of damage, fraying, or corrosion. Replace if necessary.

## 8. TROUBLESHOOTING

If you encounter issues with your DBPOWER Z07 Jump Starter, refer to the following common problems and solutions:

| Problem  | Possible Cause  | Solution   |
|--|---|--|
| Jump starter does not turn on.                   | Battery is completely discharged.   | Charge the jump starter fully using the Type-C charging cable.   |
| Vehicle does not start after jump attempt.       | <ul style="list-style-type: none"><li>◦ Clamps not connected properly.</li><li>◦ Jump starter battery too low.</li><li>◦ Vehicle battery severely damaged.</li><li>◦ Vehicle has other mechanical issues.</li></ul> | <ul style="list-style-type: none"><li>◦ Ensure clamps are firmly connected to the jump starter and car battery terminals (RED to +, BLACK to -). Check for green indicator light.</li><li>◦ Recharge the jump starter to 100%.</li><li>◦ Consult a professional mechanic.</li><li>◦ Seek professional vehicle diagnosis.</li></ul> |
| Smart clamps indicator light is red or flashing. | <ul style="list-style-type: none"><li>◦ Incorrect polarity.</li><li>◦ Short circuit detected.</li><li>◦ Over-temperature.</li></ul>   | <ul style="list-style-type: none"><li>◦ Disconnect clamps and reconnect with correct polarity.</li><li>◦ Check for any metal contact between clamps or terminals.</li><li>◦ Allow the unit to cool down before attempting to use again.</li></ul>  |
| Devices not charging from USB outputs.           | <ul style="list-style-type: none"><li>◦ Jump starter battery too low.</li><li>◦ Incorrect USB cable or device issue.</li></ul>  | <ul style="list-style-type: none"><li>◦ Recharge the jump starter.</li><li>◦ Try a different USB cable or device to confirm functionality.</li></ul>   |

If problems persist after attempting these solutions, please contact DBPOWER customer support for assistance.

## 9. SPECIFICATIONS

|                           |                                       |
|---------------------------|---------------------------------------|
| Brand                     | DBPOWER                               |
| Model Number              | Z07                                   |
| Peak Output Current       | 5000 Amps                             |
| Engine Compatibility      | Up to 10.0L Gas / 8.0L Diesel Engines |
| Battery Capacity          | 74Wh (at 3.7V)                        |
| USB Output 1              | 5V/3A                                 |
| USB Output 2              | 5V/2.1A                               |
| Type-C Input              | 5V/2A, 9V/2A                          |
| LED Flashlight Brightness | 500 Lumens                            |
| Operating Temperature     | -4°F to 140°F (-20°C to 60°C)         |
| IP Rating                 | IP65 (Dustproof, Waterproof)          |
| Product Dimensions        | 1.81"D x 3.79"W x 7.36"H              |
| Item Weight               | 1.34 Pounds                           |
| UPC                       | 840164834819                          |

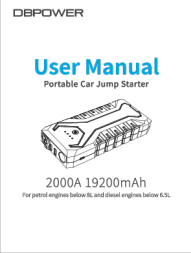


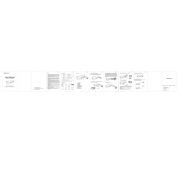

## 10. WARRANTY AND SUPPORT

DBPOWER is committed to providing high-quality products and excellent customer service. Your DBPOWER Z07 Jump Starter comes with comprehensive support:

- **24-Month Warranty:** Enjoy peace of mind with a 24-month warranty from the date of purchase, covering manufacturing defects.
- **24/7 Customer Service:** Our dedicated customer service team is available around the clock to assist you with any inquiries or issues.
- **Lifetime Technical Support:** Receive ongoing technical assistance for the lifetime of your product.

For any questions, concerns, or technical support, please contact us directly. Refer to the contact information provided in your product packaging or on the official DBPOWER website.

## Related Documents - Z07

|   |  |
|---|--|
|    | <p><a href="#">DBPOWER G16 Portable Car Jump Starter User Manual</a></p> <p>User manual for the DBPOWER G16 Portable Car Jump Starter. Includes specifications, operating instructions, safety precautions, and troubleshooting for jump starting vehicles, charging devices, and using the LED flashlight.</p>  |
|   | <p><a href="#">DBPOWER G15 Portable Car Jump Starter User Manual</a></p> <p>User manual for the DBPOWER G15 Portable Car Jump Starter 2500A 21800mAh, detailing its specifications, features, and instructions for jump-starting vehicles and charging devices.</p>  |
|  | <p><a href="#">DBPOWER DJS50 Portable Car Jump Starter User Manual</a></p> <p>User manual for the DBPOWER DJS50 Portable Car Jump Starter, featuring 18000mAh capacity, 800A peak current, and compatibility with petrol engines below 7.2L and diesel engines below 5.5L. Includes specifications, safety instructions, and usage guides.</p>   |
|  | <p><a href="#">DBPOWER Portable Car Jump Starter DJS50 User Manual</a></p> <p>User manual for the DBPOWER DJS50 portable car jump starter. Includes specifications, safety precautions, and step-by-step instructions for jump-starting vehicles, charging mobile devices and laptops, using the LED flashlight, and recharging the unit. Features 18000mAh capacity and 600A peak output.</p> |
|  | <p><a href="#">DBPOWER G16 Portable Car Jump Starter User Manual   Jump Start Your Car Safely</a></p> <p>Comprehensive user manual for the DBPOWER G16 Portable Car Jump Starter. Learn how to jump start your car, charge devices, use the LED flashlight, and understand safety precautions and specifications.</p>  |



### [DBPOWER G57 Jump Starter User Manual: Powerful Car Battery Booster](#)

Comprehensive user manual for the DBPOWER G57 jump starter. Learn how to safely jump-start your car, charge devices, and use the LED flashlight. Includes specifications, safety precautions, and troubleshooting.