

iFFALCON 55F75

iFFALCON 55-Inch Class QLED 4K Smart TV User Manual

Model: 55F75

INTRODUCTION

Thank you for choosing the iFFALCON 55-Inch Class QLED 4K Smart TV. This manual provides essential information for setting up, operating, maintaining, and troubleshooting your new television. Designed with an ultra-slim profile and advanced features like Art Mode, 144Hz refresh rate, and Google TV, your iFFALCON TV delivers a premium viewing experience. Please read this manual thoroughly before use to ensure proper installation and optimal performance.



Image: The iFFALCON 55-Inch QLED 4K Smart TV, highlighting its 55-inch screen size and support for HDR10, HDR10+, HLG, HGIG, Dolby Vision IQ, Dolby Atmos, DTS:X, AMD FreeSync Premium, and Golden Ear Tuning.

SETUP

1. Unboxing and Package Contents

Carefully remove all components from the packaging. Ensure all items listed below are present:

- iFFALCON TV
- Power cable
- 2 x AAA batteries for remote
- 6 x Stand screws
- Table stands
- 2 x Screw hole covers
- 2 x Rubber protectors
- Wall mount bracket
- Quick Start Guide
- TV remote

2. Physical Installation

Your iFFALCON Mural TV is designed for a seamless wall-mount installation, sitting flush against the wall. Alternatively, you can use the included table stands.

Wall Mounting:

Utilize the provided wall mount bracket for an ultra-slim, flush installation. Ensure the wall surface is even to minimize gaps. The hidden cable design helps maintain a clean aesthetic by concealing wires.

Seamless Wall Mount

Blends with your décor, iFFALCON Mural TV hugs the wall like a flat panel, creating a minimalist look

*Minor gaps may occur due to uneven walls or improper installation.



Thin As Only
1.1"

Seamless Mount

iFFALCON



Conventional Mount

OTHERS

Image: A visual comparison illustrating the iFFALCON Mural TV's 1.1-inch ultra-slim profile and seamless wall-mount capability, which allows it to sit flush against the wall, unlike conventional mounts.

Table Stand Installation:

Attach the table stands to the bottom of the TV using the provided screws. Place the TV on a stable, flat surface.

3. Initial Power On and Setup Wizard

Connect the power cable to the TV and a power outlet. Press the power button on the remote control. The TV will guide you through the initial setup wizard, including language selection, network connection, and Google TV account setup.

4. Network Connection

Your TV supports both Wi-Fi and Ethernet connectivity. During the setup wizard, select your preferred method and follow the on-screen instructions to connect to your home network.

5. Google TV Setup

Sign in with your Google account to personalize your Google TV experience. This enables personalized recommendations, access to streaming apps, and voice commands via Google Assistant.

1. Basic Controls and Remote

Use the included remote control to navigate menus, adjust volume, change channels, and access smart features. The remote supports Google Assistant for hands-free voice commands.

2. Picture Settings

Your iFFALCON TV features a 4K QLED display with a 144Hz refresh rate, offering stunning visuals. Adjust picture settings to optimize your viewing experience.

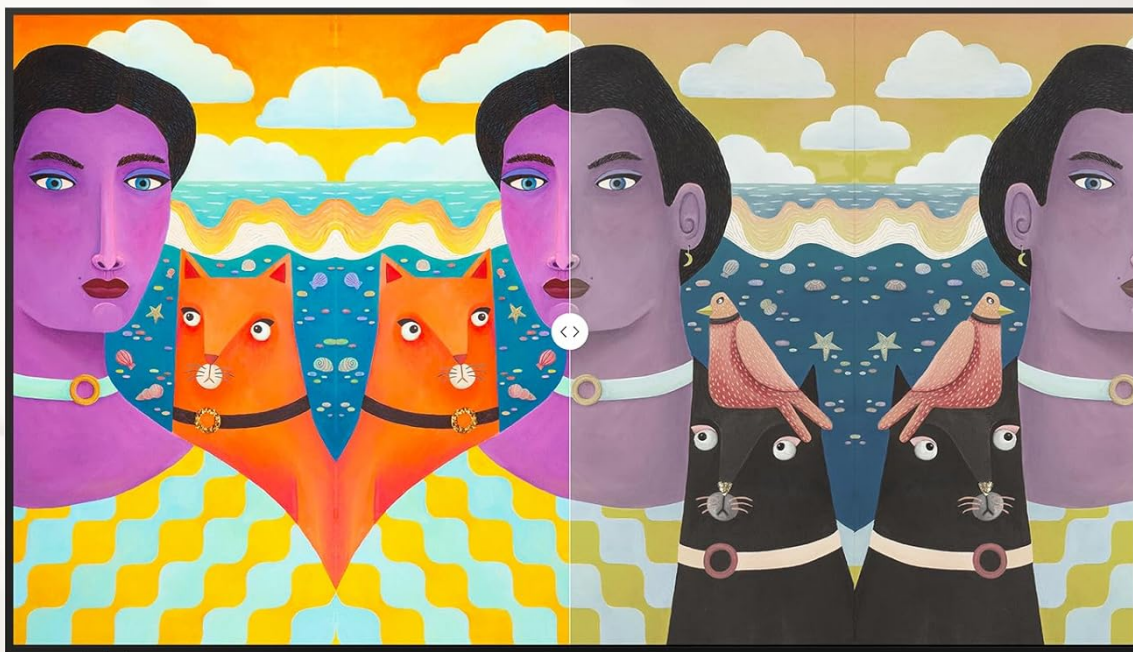
- **4K UHD & Ultra Wide Color Gamut:** Experience vibrant, true-to-life colors with 93% DCI-P3 wide color gamut.
- **HDR (High Dynamic Range):** Supports HDR10, HDR10+, HLG, and Dolby Vision IQ for enhanced contrast and color detail. Note: The TV is initially in Energy Saving Mode; switch to HDR Mode for best picture quality.
- **144Hz Refresh Rate:** Provides ultra-smooth motion, ideal for fast-paced content and gaming.
- **Ultra-high Contrast:** Features a 5000:1 High Contrast VA Panel for deeper blacks and reduced halo effects.

Vivid, Life Like Colors

QLED 93% DCI-P3 wide color gamut and AI PQ color tuning deliver vivid, true-to-life visuals



93% DCI-P3



Wide Color Gamut

Conventional Color Gamut

Image: A side-by-side comparison demonstrating the superior color reproduction of the iFFALCON TV's 93% DCI-P3 wide color gamut versus a conventional color gamut.

Next-level Speed

144Hz Native Refresh Rate, Sharper visuals with less stutter or tear

144Hz

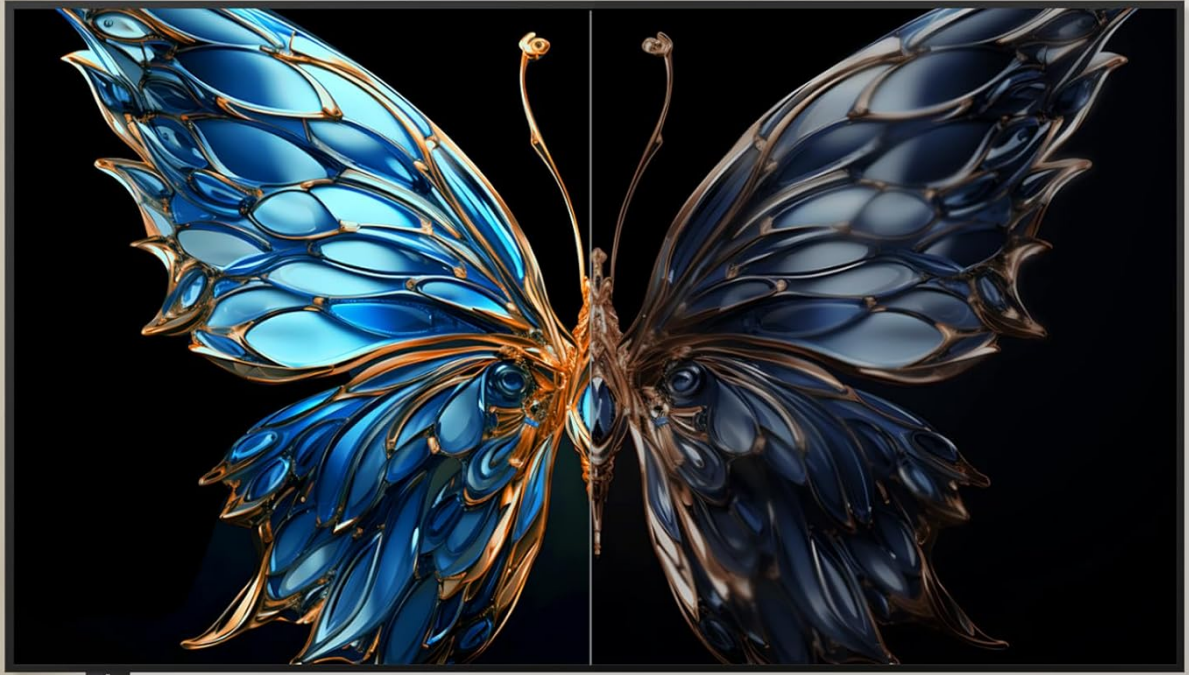
60Hz



Image: A visual representation of the difference between 144Hz and 60Hz refresh rates, illustrating how the 144Hz native refresh rate provides sharper visuals with less stutter or tear.

Ultra-high Contrast, More Details

5000:1 High Contrast VA Panel Deeper blacks, reduced halo for a clearer picture



*The data was quoted from the iFFALCON laboratory, Different test environment standards may cause deviations in results

Image: A visual demonstration of the TV's ultra-high contrast, showcasing how the 5000:1 High Contrast VA Panel delivers deeper blacks and more intricate details.

3. Sound Settings

Enhance your audio experience with advanced sound technologies.

- **Dolby Atmos:** Provides immersive, multi-dimensional sound for a cinematic audio experience.
- **DTS:X:** Delivers object-based audio for a more realistic soundstage.
- **Golden Ear Tuning:** Optimizes audio output for balanced and clear sound.

Dolby Atmos Immersive Audio

Accurate sound positioning for a cinematic experience

*Dolby, Dolby Atmos, and the double-D symbol are registered trademarks of Dolby Laboratories.



Dolby
VISION IQ

HDR10+

HDR 10

HLG HGIG

Dolby
ATMOS

dts **x**

AMD
FreeSync
Premium


Golden Ear Tuning

Image: A depiction of the Dolby Atmos immersive audio experience, showing sound waves filling a room from the TV, indicating accurate sound positioning for a cinematic feel.

4. Art Mode

Transform your TV into a digital art display when not in use. Access the T-Exhibition App to showcase classic masterpieces, AI-generated artworks, or your personal photos.

A Masterpiece in Your Home

100,000+ Artworks with T-Exhibition App, turns your home into an art gallery



Image: A living room setting showcasing the iFALCON Mural TV in Art Mode, displaying a famous painting and blending seamlessly with other framed artworks, turning the home into a gallery.

5. Game Master Mode

For an optimized gaming experience, activate Game Master Mode. This mode combines low latency, Variable Refresh Rate (VRR), and HDR optimization to provide fluid visuals and responsive gameplay.

6. Eye Care Technology

The TV incorporates multiple eye care features, including low blue light and flicker-free technology, to reduce eye strain during extended viewing sessions.

7. Smart Entertainment with Google TV

Google TV provides a centralized hub for all your streaming content. Receive personalized recommendations across various streaming apps, control smart home devices, and use Google Assistant for voice commands.

Google TV

Just for you, Personalized recommendations from all your subscriptions

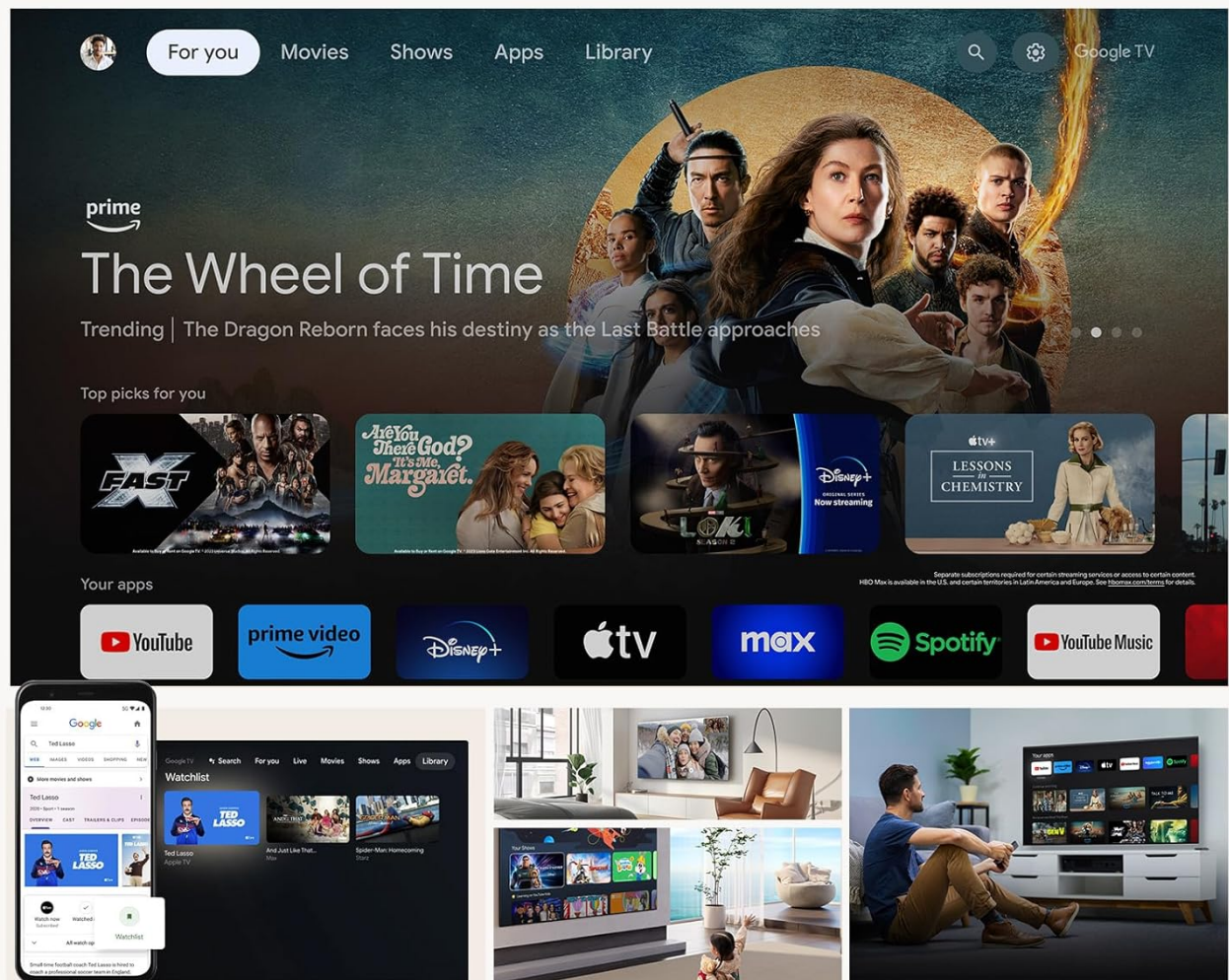


Image: The Google TV interface, demonstrating personalized content recommendations from various streaming services and the intuitive user experience.

MAINTENANCE

1. Cleaning Your TV

To clean the screen, gently wipe it with a soft, lint-free cloth. For stubborn marks, slightly dampen the cloth with water or a screen-cleaning solution. Avoid harsh chemicals or abrasive materials. For the TV frame and stand, use a dry, soft cloth.

2. Software Updates

Your iFFALCON TV may receive periodic software updates to improve performance and add new features. Ensure your TV is connected to the internet to receive these updates automatically or check for them manually in the settings menu.

3. Cable Management

The TV features a hidden cable design on the back to help maintain a tidy appearance. Route your cables neatly to keep them out of sight and prevent tangles.

Make cables invisible

The hidden cable design on the back brings a sense of harmony to your neat space



Image: The back of the iFFALCON TV, illustrating its hidden cable design that allows for a clean and clutter-free setup by keeping wires out of sight.

TROUBLESHOOTING

If you encounter issues with your iFFALCON TV, refer to the following common troubleshooting steps. For more detailed assistance, consult the full User Manual (PDF) available online or contact customer support.

- **No Power:** Ensure the power cable is securely connected to both the TV and a working power outlet. Try plugging another device into the same outlet to confirm it has power.
- **No Picture/Black Screen:** Check that the correct input source is selected. Verify all HDMI or other video cables are securely connected. Try restarting the TV by unplugging it for a few minutes and then plugging it back in.
- **No Sound:** Check the volume level and ensure the TV is not muted. Verify audio cables are correctly connected if using external speakers. If using internal speakers, check sound settings in the TV menu.
- **Network Connection Issues:** Ensure your Wi-Fi router is on and functioning. Try restarting your router. If using Ethernet, ensure the cable is securely connected. Re-enter Wi-Fi password if necessary.
- **Remote Control Not Responding:** Check and replace the batteries (2 x AAA). Ensure there are no obstructions between the remote and the TV's IR sensor.

SPECIFICATIONS

| Feature | Specification |
|----------------------------|--|
| Brand Name | iFFALCON |
| Model Number | 55F75 |
| Screen Size | 55 Inches (140 cm) |
| Display Technology | QLED |
| Resolution | 4K UHD |
| Refresh Rate | 144 Hz |
| Product Dimensions (DxWxH) | 28.23" x 48.46" x 1.1" |
| Item Weight | 52.6 pounds |
| Aspect Ratio | 16:9 |
| Special Features | Art Mode, Built-In Speaker, Game Mode, Dolby Vision IQ, Dolby Atmos, Eye Care Technology |
| Connectivity Technology | Bluetooth, Ethernet, HDMI, USB, Wi-Fi |
| Batteries Required | 2 AAA batteries (included) |

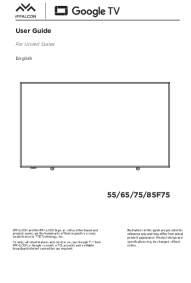
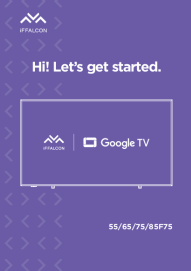

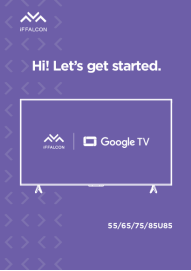
WARRANTY & SUPPORT

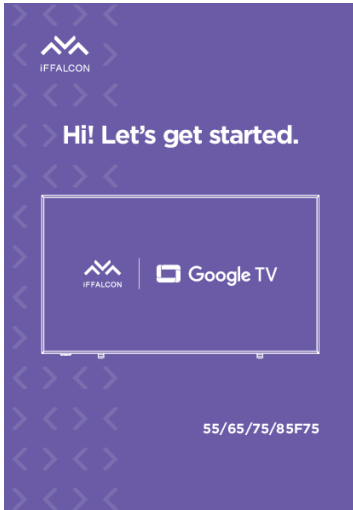
For detailed warranty information, please refer to the documentation included with your product or visit the official iFFALCON website. If you require technical assistance or have questions not covered in this manual, please contact iFFALCON customer support.

Additional Resources:

- **User Guide (PDF):** [Download User Guide](#)
- **User Manual (PDF):** [Download User Manual](#)
- **iFFALCON Official Store:** [Visit Store](#)

Related Documents

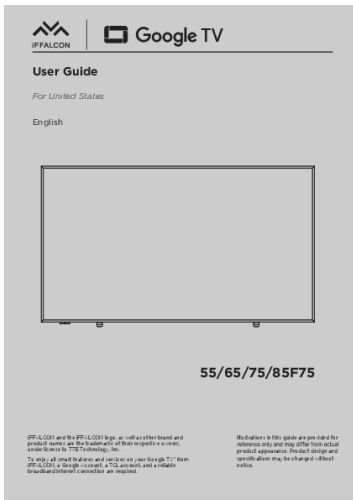
| | |
|---|--|
|  | <p>iFFALCON F75 Series Google TV User Guide</p> <p>Comprehensive user guide for the iFFALCON F75 Series Google TV, covering setup, operation, settings, troubleshooting, and warranty information for models 55F75, 65F75, 75F75, and 85F75.</p> |
|  | <p>iFFALCON F75 Series Google TV Quick Start Guide</p> <p>This guide provides setup instructions, safety information, and details about the iFFALCON F75 Series Google TV, including its features, remote control functions, and warranty information.</p> |
|  | <p>iFFALCON LED TV Operation Manual for F2A series</p> <p>Comprehensive operation manual for iFFALCON F2A series LED TVs, covering initial setup, remote control functions, network connection (wired/wireless), basic TV operations, smart TV features, EPG, Bluetooth, Netflix settings, parental controls, and a detailed troubleshooting guide. Learn how to optimize your iFFALCON TV experience.</p> |
|  | <p>iFFALCON 55/65/75/85U85 Google TV Quick Start Guide</p> <p>Get started with your new iFFALCON 55/65/75/85U85 Google TV. This guide covers unboxing, setup, connecting devices, remote control, warranty, and troubleshooting.</p> |



[iFFALCON F75 Series Google TV Quick Start Guide](#)

This guide provides setup instructions, safety information, and details about the iFFALCON F75 Series Google TV, including its features, remote control functions, and warranty information.

lang:en **score:33** filesize: 3.84 M page_count: 16 document date: 2025-05-30



[iFFALCON F75 Series Google TV User Guide](#)

Comprehensive user guide for the iFFALCON F75 Series Google TV, covering setup, operation, settings, troubleshooting, and warranty information for models 55F75, 65F75, 75F75, and 85F75.

lang:en **score:31** filesize: 5.9 M page_count: 27 document date: 2025-05-13