

## Uineer A06P



# Uineer A06P Ergonomic Wireless Mouse

## INSTRUCTION MANUAL

[Introduction](#)   [What's in the](#)

[Box](#)   [Components](#)   [Setup](#)   [Operation](#)   [Maintenance](#)   [Troubleshooting](#)   [Specifications](#)   [Warranty](#)  
[& Support](#)

### 1. Introduction

---

The Uineer A06P Ergonomic Wireless Mouse is designed to provide a comfortable and efficient computing experience. Its vertical design promotes a natural hand and wrist posture, aiming to reduce strain during extended use. This manual provides essential information for setting up, operating, and maintaining your mouse.

## 59° COMFORTABLE GRIP



**90%**  
Reduces  
Wrist Fatigue



**10%**  
Reduce  
Muscle Fatigue

59°

## SCIENTIFIC EXERTION

**Elbow Drive > Wrist Movement,**  
Further alleviate wrist fatigue

The Uineer A06P Ergonomic Wireless Mouse features a 59-degree comfortable grip, designed to reduce wrist and muscle fatigue during prolonged use.

## 2. What's in the Box

Please check the package contents to ensure all items are present:

- 1 x Uineer A06P Wireless Vertical Mouse
- 1 x USB-A Receiver (stored at the bottom of the mouse)
- 1 x 50CM Type-C Charging Cable
- 1 x User Manual

## 3. Product Components

Familiarize yourself with the various parts of your Uineer A06P Ergonomic Wireless Mouse:

# Rechargeable & Visible Battery Indicator

Say goodbye to battery anxiety



The underside of the mouse reveals the USB receiver, power switch, and dedicated storage for the receiver.

1. **Left Click Button:** Standard left-click function.
2. **Right Click Button:** Standard right-click function.
3. **Scroll Wheel:** For vertical scrolling.
4. **DPI Adjustment Button:** Cycles through DPI settings (800/1200/1600/2400).
5. **Forward Button:** Navigates forward in web browsers or file explorers.
6. **Backward Button:** Navigates backward in web browsers or file explorers.
7. **Battery Indicator Lights:** Displays current battery level.
8. **USB-A Receiver:** For 2.4G wireless connection.
9. **USB Receiver Storage:** Compartment for storing the USB receiver when not in use.
10. **Power Switch:** Turns the mouse ON or OFF.
11. **Type-C Charging Port:** For recharging the internal battery.

## 4. Setup Instructions

Follow these steps to set up your Uineer A06P Ergonomic Wireless Mouse:

### 4.1. Initial Charging

Before first use, it is recommended to fully charge the mouse. Connect the provided Type-C charging cable to the mouse's charging port and the other end to a USB power source (e.g., computer USB port, USB wall adapter). The battery indicator lights will show charging status.



The mouse is rechargeable via its Type-C port, ensuring convenience and reducing the need for disposable batteries.

#### 4.2. Connecting the USB Receiver

1. Locate the USB-A receiver stored in the compartment at the bottom of the mouse.
2. Remove the USB-A receiver.
3. Insert the USB-A receiver into an available USB-A port on your computer or device.
4. Turn on the mouse using the power switch located on the bottom.

The mouse should automatically connect to your device. No additional drivers are typically required for most operating systems.

# 2.4GHz Connection

Plug - and - Play for Instant Use



Stable 10m(32.81ft)  
connection



Note: USB receiver at  
mouse bottom

The 2.4GHz wireless connection offers plug-and-play convenience with a stable 10-meter transmission range.

## 5. Operating Instructions

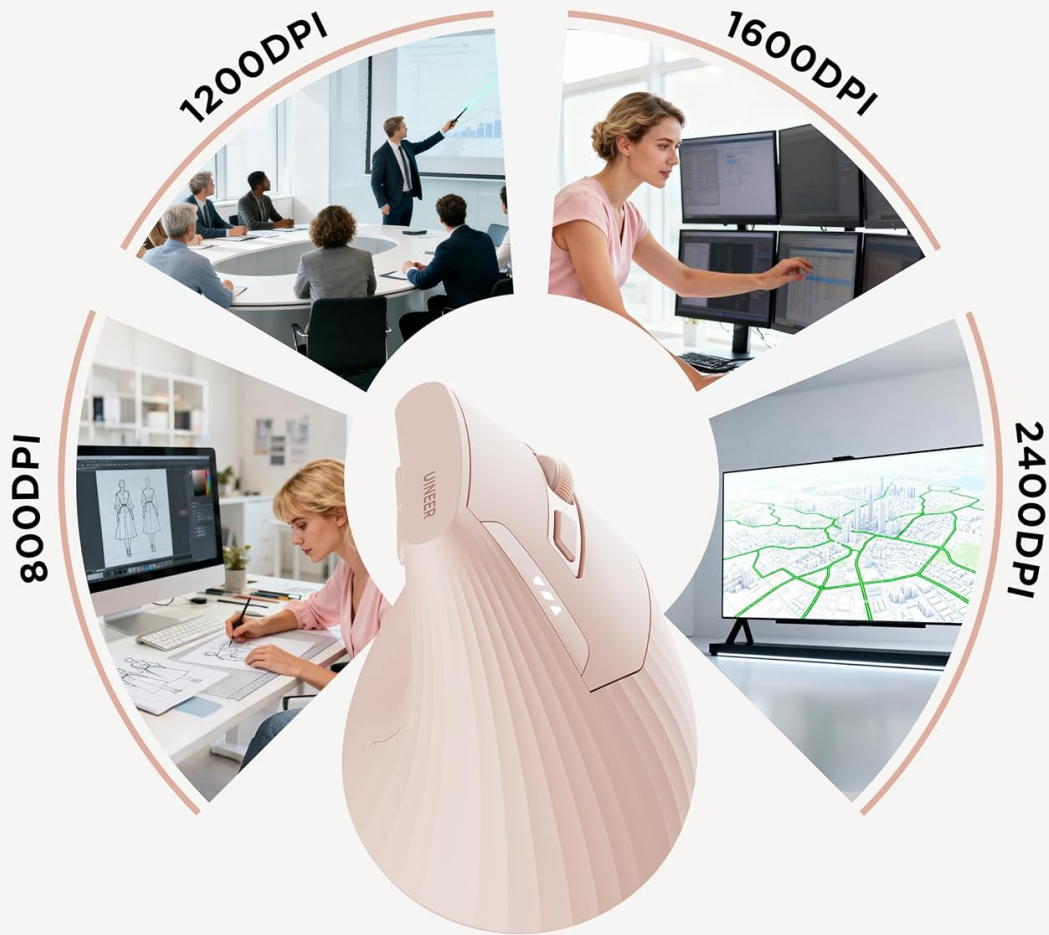
### 5.1. DPI Adjustment

The mouse features 4 adjustable DPI levels to suit various tasks and preferences. Press the DPI adjustment button (usually located behind the scroll wheel) to cycle through the settings:

- 800 DPI (Slowest cursor speed)
- 1200 DPI
- 1600 DPI
- 2400 DPI (Fastest cursor speed)

# 4 level DPI Adjustment

Easy to Change Your Cursor Sensitivity



Adjust the DPI setting to match your task, from precise design work to fast-paced gaming.

## 5.2. Forward and Backward Buttons

Use the dedicated forward and backward buttons (located on the side of the mouse) for quick navigation in web browsers, file explorers, and other applications that support these functions.

## 5.3. Battery Indicator

The mouse is equipped with LED battery indicator lights to show the remaining power level. This feature helps prevent unexpected power loss during use.

# Wireless mouse rechargeable & handy

500 mAh battery capacity



The visible battery indicator eliminates battery anxiety by showing the current charge level.

## 5.4. Power Saving Mode

To conserve battery life, the mouse will automatically enter a sleep mode after 10-30 minutes of inactivity. To wake the mouse, simply click any button.

## 5.5. Compatibility

The Uineer A06P Ergonomic Wireless Mouse is widely compatible with various operating systems:

- Windows
- Mac OS X
- Linux
- Android
- iOS (13+)

*Note: A USB-A port is required for connection. Side buttons may not be functional on macOS.*

## 6. Maintenance

### 6.1. Cleaning

To clean your mouse, gently wipe its surface with a soft, damp cloth. Avoid using harsh chemicals or abrasive materials, as these can damage the finish. Ensure no liquid enters the mouse's internal components.

## 6.2. Battery Care

The mouse contains a rechargeable battery. To maximize battery lifespan:

- Avoid fully discharging the battery frequently.
- Charge the mouse regularly, especially when the low-battery indicator appears.
- Store the mouse in a cool, dry place if not used for an extended period.

## 7. Troubleshooting

---

If you encounter issues with your Uineer A06P Ergonomic Wireless Mouse, please refer to the following common solutions:

- **Mouse not responding:**

- Ensure the mouse is powered ON using the switch on the bottom.
- Check if the USB receiver is securely plugged into a working USB-A port on your device.
- Recharge the mouse if the battery is low.
- Try plugging the USB receiver into a different USB port.
- Restart your computer or device.

- **Erratic or jumpy cursor:**

- Ensure the mouse is used on a clean, non-reflective surface.
- Clean the optical sensor at the bottom of the mouse.
- Adjust the DPI setting to a lower level if the cursor is too sensitive.

- **Connection issues:**

- Ensure the mouse is within the 10-meter operating range of the USB receiver.
- Avoid using the mouse near strong electromagnetic interference sources.

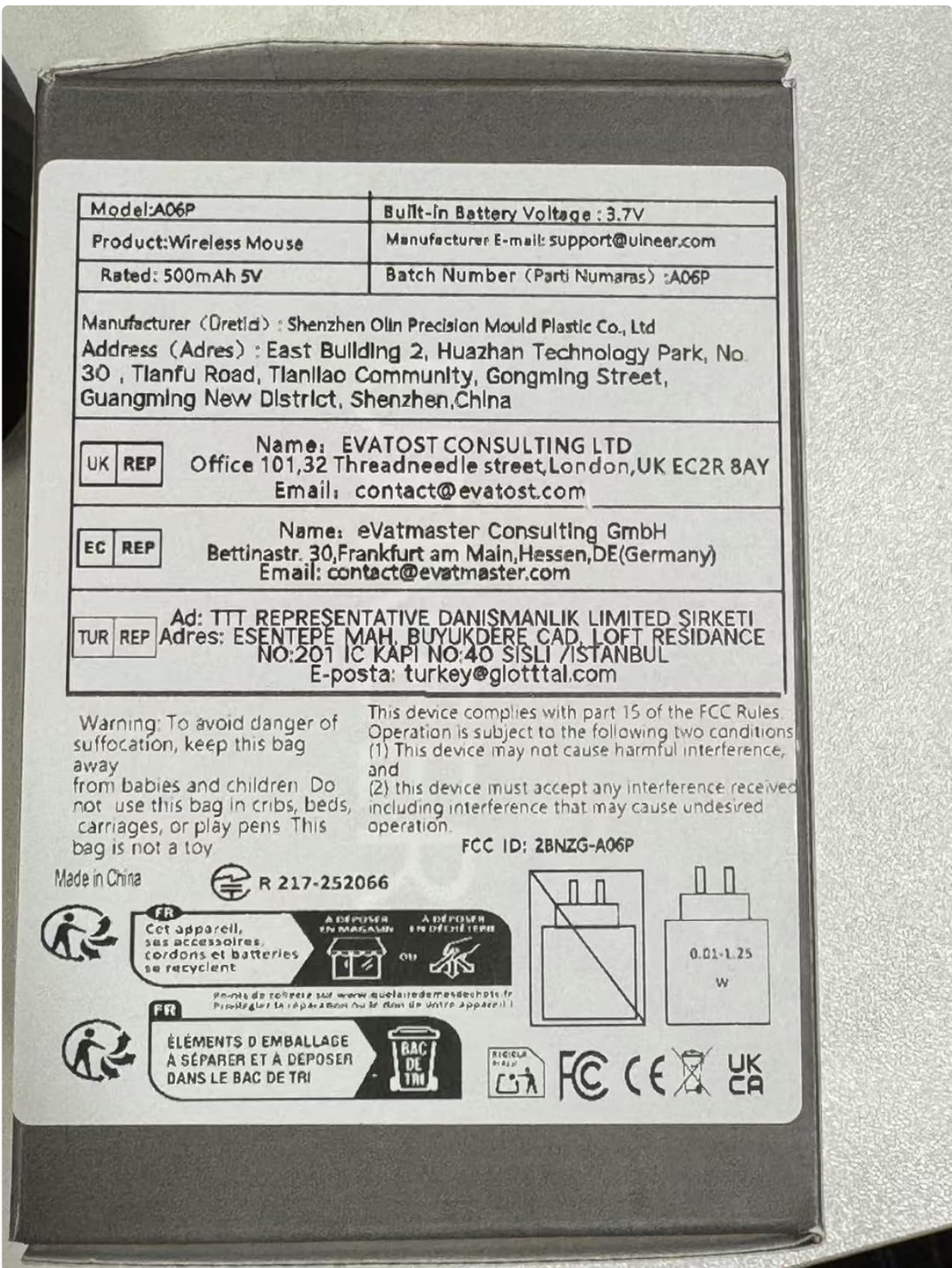
- **Battery not charging:**

- Verify that the Type-C charging cable is properly connected to both the mouse and the power source.
- Try a different USB charging port or cable.
- Ensure the power source is active.

## 8. Specifications

---

Detailed technical specifications for the Uineer A06P Ergonomic Wireless Mouse:



The product label provides essential information including model number and manufacturer details.

Feature	Detail
Model Number	A06P
Connectivity Technology	2.4G Wireless (USB-A Receiver)
Movement Detection Technology	Optical

Adjustable DPI Levels	800 / 1200 / 1600 / 2400
Battery Type	Rechargeable (500mAh, 3.7V)
Charging Port	Type-C
Product Dimensions	11.6 x 7.2 x 7.5 cm (4.57 x 2.83 x 2.95 inches)
Item Weight	3.7 ounces
Operating Range	Up to 10 meters (32.81 feet)
Special Features	Battery Indicator, Ergonomic Design, Rechargeable, Reduced Wrist Strain, Wireless

## 9. Warranty and Support

Uineer provides the following support for your A06P Ergonomic Wireless Mouse:

- **45-Day Refund Policy:** Enjoy a 45-day no-reason refund period from the date of purchase.
- **12-Month Replacement Warranty:** The product is covered by a 12-month replacement warranty for manufacturing defects.
- **Professional After-Sales Support:** For any inquiries, technical assistance, or warranty claims, please contact Uineer customer support.

### Contact Information:

**Manufacturer:** Uineer

**Manufacturer E-mail:** [support@uineer.com](mailto:support@uineer.com)